

CORNER RECORD

County of Madera T. 2S R. 22E M.D.P. Meridian California

Corner Type: Govt. Corner Meander Rancho Other

Corner Identification _____ Date of Visit Aug. 7 19 78

21 S 1/4 Cor. Sec. 21

Corner Left as Found Found and Tagged Reestablished Obliterated Corner Rebuilt

Physical Description of Corner Found; Evidence and Method used to Identify or reestablish

1" I.P. 702. R.C.E. 21650

Physical Description of Monuments Rebuilt or Perpetuated

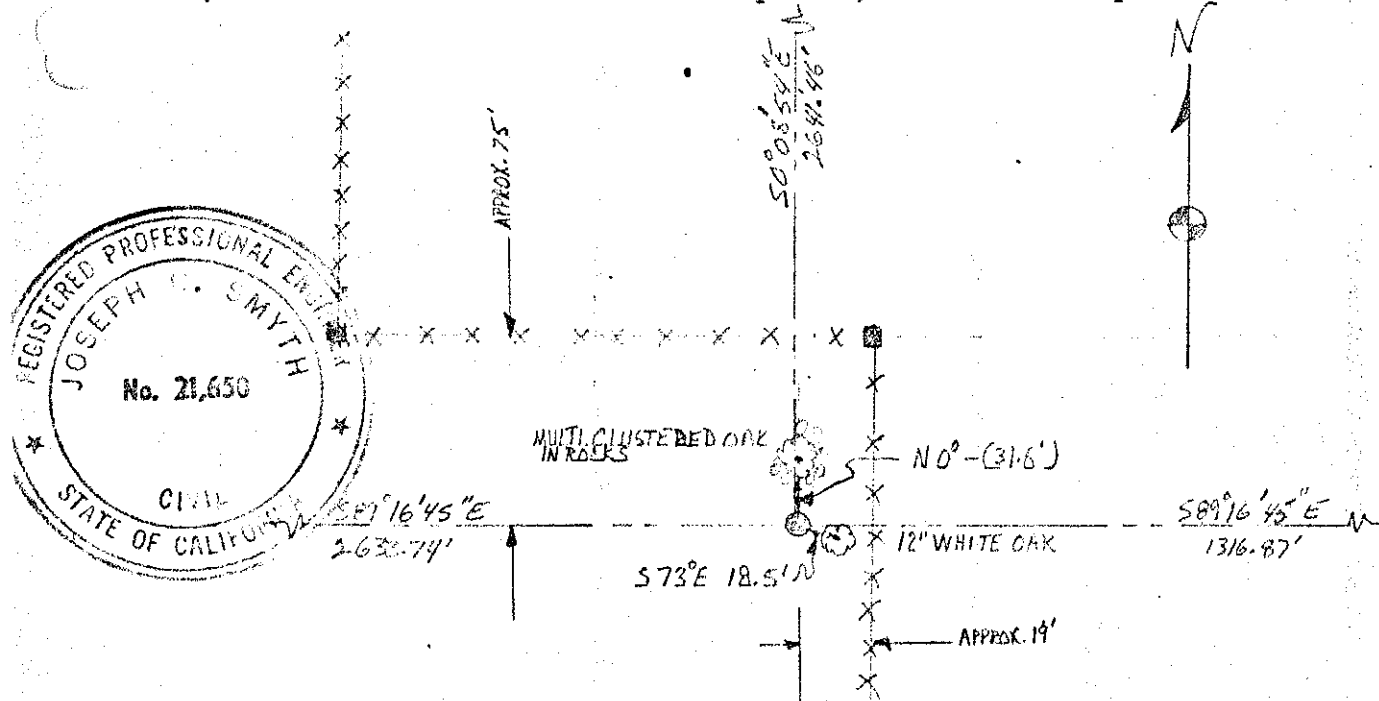
1" I.P.

California Coordinate System Order: First Second Third

Stations used: NOS (USC & GS) State County Other Station _____ Station _____

Zone _____ Elevation _____ Northings (Y) _____ Eastings (X) _____

SKETCH: (Include reference tie or witness points, remarks and topo of area)



SURVEYOR'S CERTIFICATE

This corner record was prepared by me or under direction in conformance with the Land Surveyors Act on Aug 7 1978.

Signed: Joseph C. Smyth
L.S. or R.C.E. No.: RCE 21650

COUNTY SURVEYOR'S CERTIFICATE

The Corner Record was received _____ 19 _____ and examined and filed _____ 1978.

By: _____
Title _____
Document No. _____