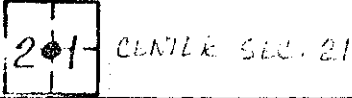


CORNER RECORD

County of MADERA T. 8S R. 22E M.D.B. & Meridian California

Corner Type: Govt. Corner Meander Rancho Other

Corner Identification X Date of Visit AUG. 7th 19 78



Corner Left as Found Found and Tagged Reestablished Obliterated Corner Rebuilt

Physical Description of Corner Found; Evidence and Method used to Identify or reestablish
FND. 1" I.P. R.C.E 21650 - SET ON PREVIOUS SURVEY

Physical Description of Monuments Rebuilt or Perpetuated

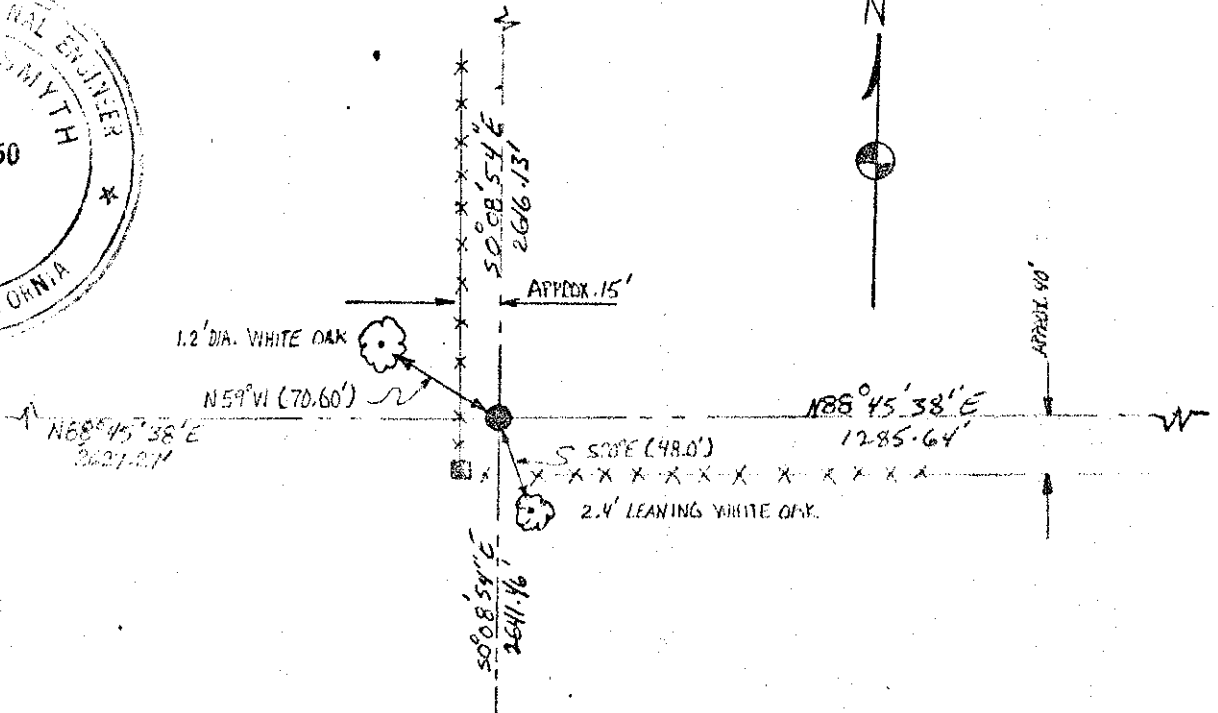
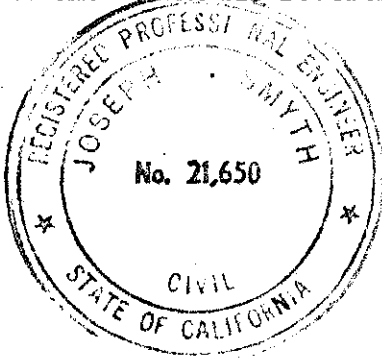
1" I.P.

California Coordinate System Order: First Second Third

Stations used: NOS (USC & GS) State County Other Station Station

Zone Elevation Northings (Y) Eastings (X)

SKETCH: (Include reference tie or witness points, remarks and topo of area)



SURVEYOR'S CERTIFICATE

This corner record was prepared by me or under direction in conformance with the Land Surveyors Act on AUG 7 1978.

Signed: Joseph C. Smyth
L.S. or R.C.E. No.: RCE 21650

COUNTY SURVEYOR'S CERTIFICATE

The Corner Record was received 19 and examined and filed Sept 15 19 78.

By:
Title
Document No.