

CORNER RECORD

COUNTY OF MADERA T. 8 S R. 22 E MD 1 MERIDIAN CALIFORNIA

CORNER TYPE: GOV'T. CORNER  MEANDER  RANCHO  CONTROL  OTHER

CORNER IDENTIFICATION — DATE OF VISIT 9/29/97 1997



MOST NORTHERLY CORNER OF PARCEL #4  
PM# 1974 (SEE SKETCH BELOW)

CORNER — LEFT AS FOUND  FOUND AND TAGGED  REESTABLISHED OBLITERATED CORNER  REBUILT

PHYSICAL DESCRIPTION OF CORNER FOUND; EVIDENCE AND METHOD USED TO IDENTIFY OR REESTABLISH

NONE FOUND

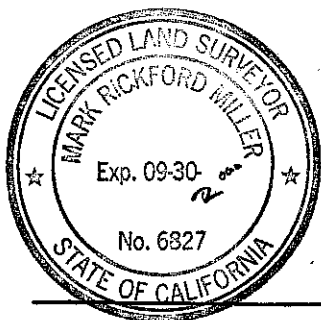
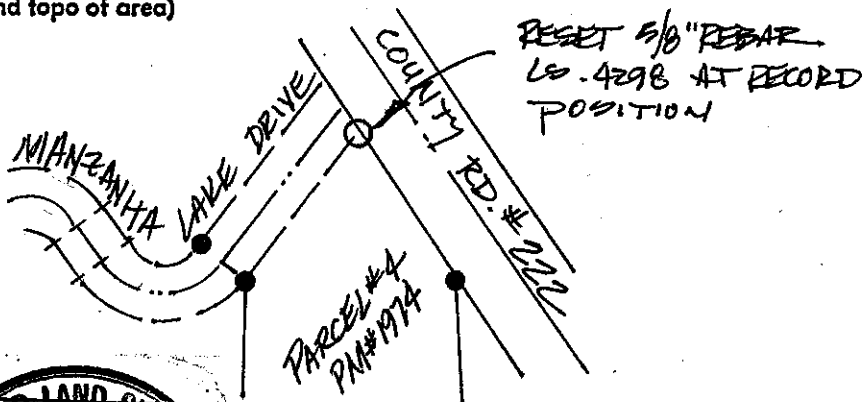
PHYSICAL DESCRIPTION OF MONUMENTS REBUILT OR PERPETUATED

SET 5/8" REBAR  
LS. 4298  
RESET AT RECORDED POSITION  
PARCEL #4 OF PM# 1974 27/112  
(NE CORNER OF PARCEL #4)

CALIFORNIA COORDINATE SYSTEM ORDER: FIRST  SECOND  THIRD   
STATIONS USED: NGS (USC & GS)  STATE  COUNTY  OTHER  STATION \_\_\_\_\_ STATION \_\_\_\_\_  
ZONE \_\_\_\_\_ ELEVATION \_\_\_\_\_ NORTHINGS (N) \_\_\_\_\_ EASTINGS (E) \_\_\_\_\_

(Fold)

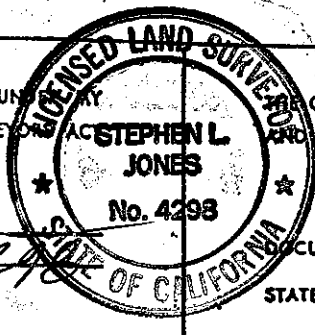
SKETCH: (Include reference tie or witness points, remarks and topo of area)



SURVEYOR'S CERTIFICATE

THIS CORNER RECORD WAS PREPARED BY ME OR UNDER MY SUPERVISION AND IN CONFORMANCE WITH THE LAND SURVEYING ACT OF 1907 ON 10/2/97 1997

SIGNED: [Signature]  
L.S. or R.C.E. No. LS 4298



COUNTY SURVEYOR'S CERTIFICATE

THIS CORNER RECORD WAS RECEIVED 8 OCT 1997  
AND EXAMINED AND FILED 18 NOV 1997  
BY: [Signature]  
TITLE: AGRO. Co. SURVEYOR

STATEMENT ON BACK OF SHEET

YES  NO