

**CORNER RECORD**

COUNTY OF MADERA T. 8 South R. 22 & 23 EAST Mt Doble MERIDIAN CALIFORNIA

CORNER TYPE: GOV'T. CORNER  MEANDER  RANCHO  CONTROL  OTHER

CORNER IDENTIFICATION — DATE OF VISIT November 9, 1987

|    |   |  |  |
|----|---|--|--|
| 12 | 7 |  |  |
|----|---|--|--|

CORNER — LEFT AS FOUND  FOUND AND TAGGED  REESTABLISHED OBLITERATED CORNER  RESULT

PHYSICAL DESCRIPTION OF CORNER FOUND: EVIDENCE AND METHOD USED TO IDENTIFY OR REESTABLISH ORIGINAL MONUMENT PER TIES ON FILE WAS TAKEN OUT BY TRACTOR WORK

SEE THE FOLLOWING RECORD DATA:  
 17/144, 17/69, 25/115, 27/102, 14/147, 23/30, 15/86

PHYSICAL DESCRIPTION OF MONUMENTS RESULT OR PERPETUATED  
 RESET  $\frac{3}{4}$ " X 30" I.D.I.P. TAGGED L.S. 4509

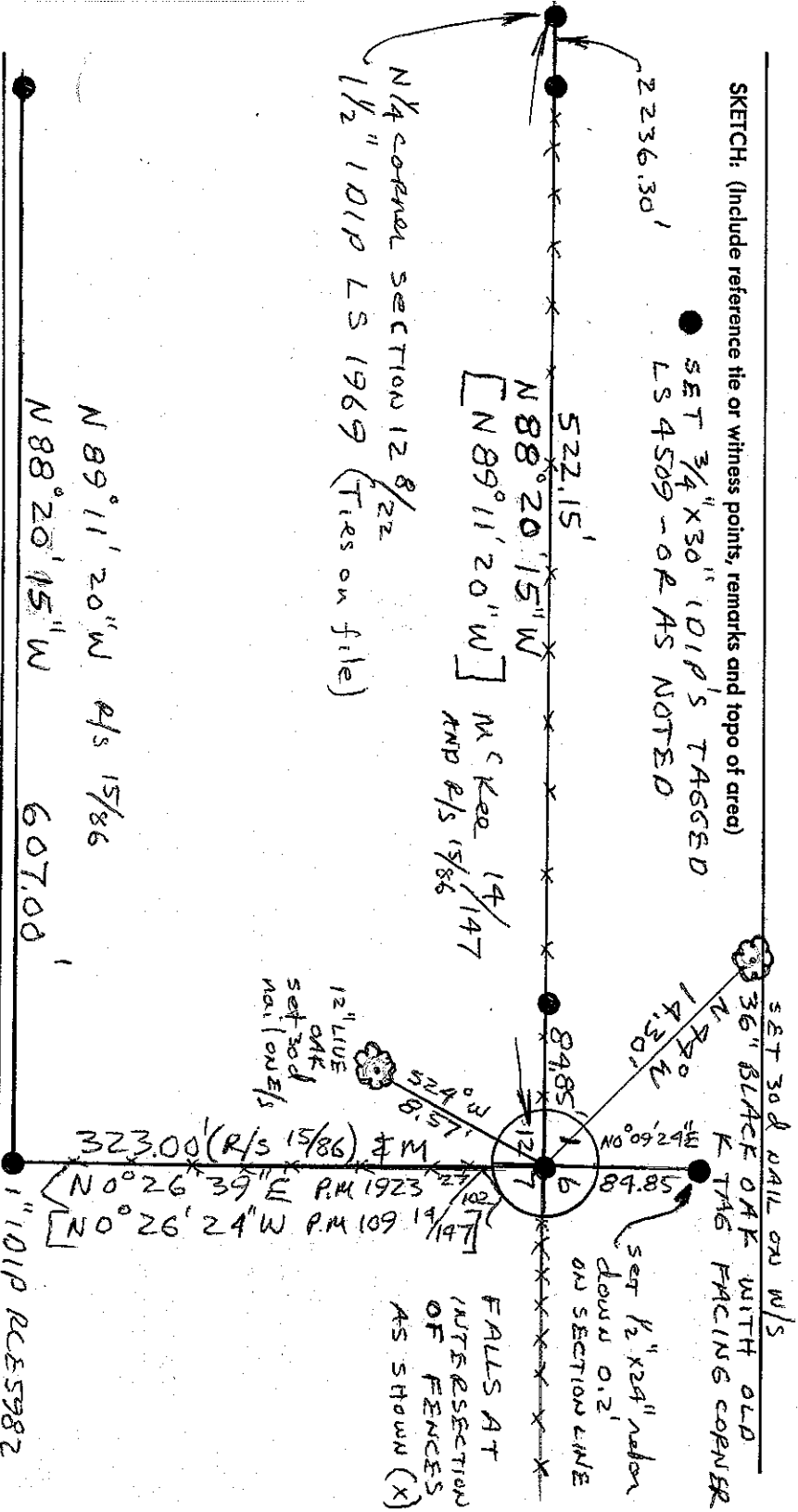
CALIFORNIA COORDINATE SYSTEM ORDER: FIRST  SECOND  THIRD

STATIONS USED: NGS (USC & GS)  STATE  COUNTY  OTHER  STATION \_\_\_\_\_ STATION \_\_\_\_\_

ZONE \_\_\_\_\_ ELEVATION \_\_\_\_\_ NORTHINGS (N) \_\_\_\_\_ EASTINGS (E) \_\_\_\_\_

(Fold)

SKETCH: (Include reference tie or witness points, remarks and topo of area)



SURVEYOR'S CERTIFICATE

THIS CORNER RECORD WAS PREPARED BY ME OR UNDER MY DIRECTION IN CONFORMANCE WITH THE LAND SURVEYORS ACT ON NOVEMBER 11 1987

SIGNED: Douglas D. B. Breadahl

L.S. or R.C.E. No. \_\_\_\_\_

COUNTY SURVEYORS CERTIFICATE

THE CORNER RECORD WAS RECEIVED \_\_\_\_\_ 19\_\_\_\_

AND EXAMINED AND FILED \_\_\_\_\_ 19\_\_\_\_

BY: \_\_\_\_\_

TITLE: \_\_\_\_\_

DOCUMENT No. \_\_\_\_\_

STATEMENT ON BACK OF SHEET YES  NO

