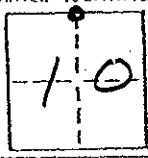


CORNER RECORD

COUNTY OF MADERA T. 8 S. R. 22 E. MT. DIABLO BASE MERIDIAN CALIFORNIA

CORNER TYPE: GOV'T. CORNER MEANDER RANCHO CONTROL OTHER
 CORNER IDENTIFICATION — DATE OF VISIT 1/28 1976



NORTH 1/4 COR.

CORNER — LEFT AS FOUND FOUND AND TAGGED REESTABLISHED OBLITERATED CORNER RESULT

PHYSICAL DESCRIPTION OF CORNER FOUND; EVIDENCE AND METHOD USED TO IDENTIFY OR REESTABLISH

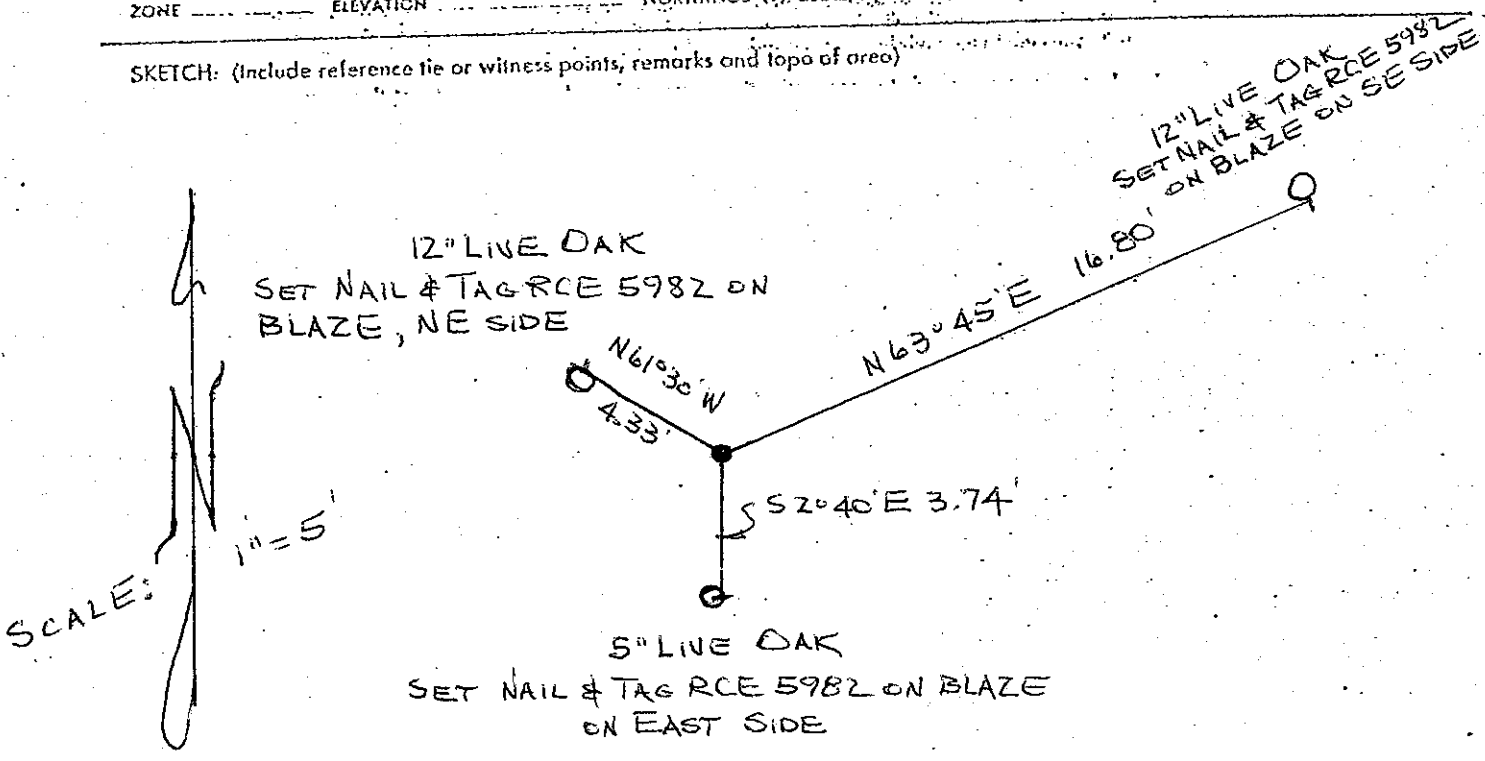
1/2" IRON PIPE TAGGED RCE 5982

PHYSICAL DESCRIPTION OF MONUMENTS RESULT OR PERPETUATED

LEFT AS FOUND

CALIFORNIA COORDINATE SYSTEM ORDER: FIRST SECOND THIRD
 STATIONS USED: NGS (USC & GS) STATE COUNTY OTHER STATION _____ STATION _____
 ZONE _____ ELEVATION _____ NORTHINGS (N) _____ EASTINGS (E) _____

SKETCH: (Include reference tie or witness points, remarks and topo of area)



SURVEYOR'S CERTIFICATE
 THIS CORNER RECORD WAS PREPARED BY ME OR UNDER MY SUPERVISION
 DIRECTION IN CONFORMANCE WITH THE LAND SURVEYERS ACT
 ON 1/28
 SIGNED: [Signature]
 I.S. or R.C.E. No. _____



COUNTY SURVEYOR'S CERTIFICATE
 THE CORNER RECORD WAS RECEIVED 2-4-76
 AND EXAMINED AND FILED 2-5 1976
 BY A. Grote
 TITLE: County Engineer
 DOCUMENT No. 76-02-1
 STATEMENT ON BACK OF SHEET YES NO