

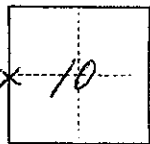
CORNER RECORD

17M 979

COUNTY OF MADERA T. 85 R. 22E MD MERIDIAN CALIFORNIA

CORNER TYPE: GOV'T. CORNER MEANDER RANCHO CONTROL OTHER

NEAREST IDENTIFICATION — DATE OF VISIT 10-2 1975



W 1/4 COR, Sec 10, T85, R22E, MDB&M

CORNER — LEFT AS FOUND FOUND AND TAGGED REESTABLISHED OBLITERATED CORNER REBUILT

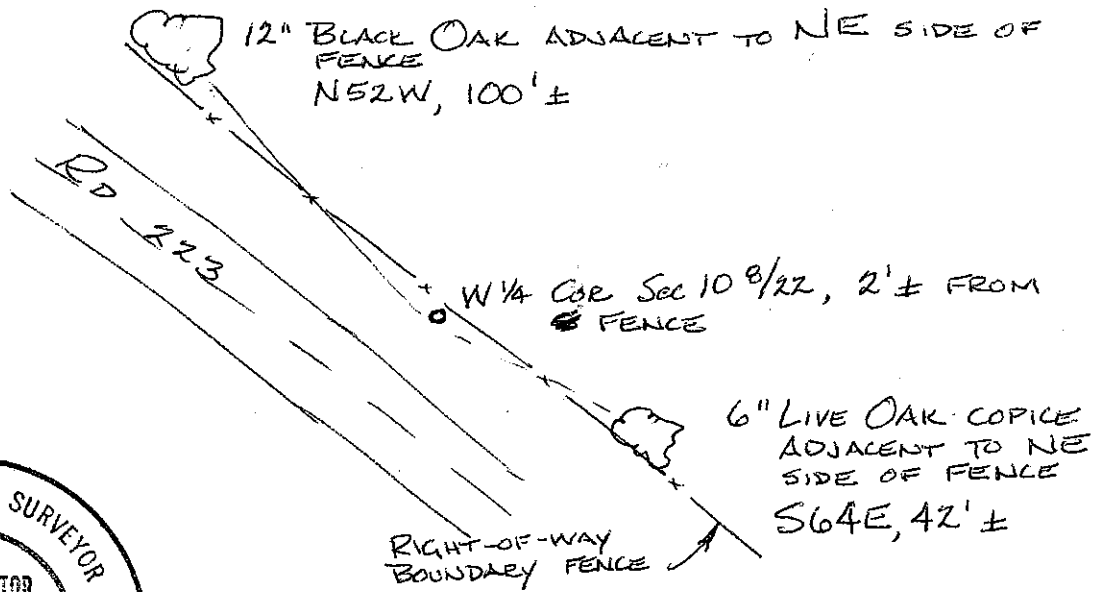
PHYSICAL DESCRIPTION OF CORNER FOUND; EVIDENCE AND METHOD USED TO IDENTIFY OR REESTABLISH

Found 2 1/2" IRON PIPE WITH PIPE CAP STAMPED WITH CORNER IDENTIFICATION AND LS No 1969

PHYSICAL DESCRIPTION OF MONUMENTS REBUILT OR PERPETUATED

CALIFORNIA COORDINATE SYSTEM ORDER: FIRST SECOND THIRD
STATIONS USED: NGS (USC & GS) STATE COUNTY OTHER STATION _____ STATION _____
ELEVATION _____ NORTHINGS (Y) _____ EASTINGS (X) _____

SKETCH: (Include reference tie or witness points, remarks and topo of area)



THIS CORNER RECORD WAS PREPARED BY ME OR UNDER MY DIRECTION IN CONFORMANCE WITH THE LAND SURVEYORS ACT ON _____ STATE OF CALIFORNIA 1975
SIGNED: [Signature]
L.S. or R.C.E. No.: LS 4126

COUNTY SURVEYOR'S CERTIFICATE
THE CORNER RECORD WAS RECEIVED OCT. 3 1975
AND EXAMINED AND FILED OCT. 2 1975
BY: A. Grote
TITLE: County Engineer
DOCUMENT No. 75-32-03