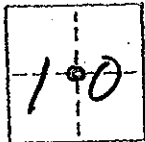


CORNER RECORD

COUNTY OF MADERA T. 8 S. R. 22 E. MT. DIABLO BASE MERIDIAN CALIFORNIA

CORNER TYPE: GOV'T. CORNER MEANDER RANCHO CONTROL OTHER
CORNER IDENTIFICATION -- DATE OF VISIT 1/27 1976



CENTER 1/4 COR.

CORNER -- LEFT AS FOUND FOUND AND TAGGED REESTABLISHED OBLITERATED CORNER RESULT

PHYSICAL DESCRIPTION OF CORNER FOUND; EVIDENCE AND METHOD USED TO IDENTIFY OR REESTABLISH

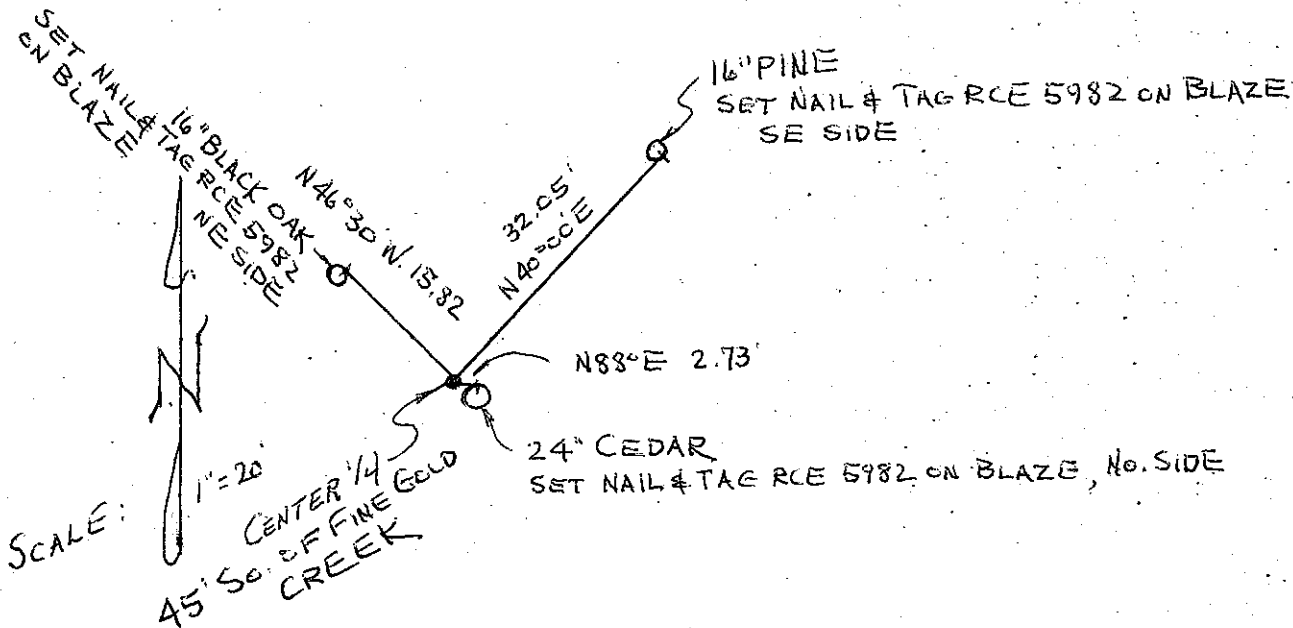
1 1/4" IRON PIPE TAGGED RCE 5982

PHYSICAL DESCRIPTION OF MONUMENTS RESULT OR PERPETUATED

LEFT AS FOUND

CALIFORNIA COORDINATE SYSTEM ORDER: FIRST SECOND THIRD
STATIONS USED: NGS (USC & GSI) STATE COUNTY OTHER STATION _____ STATION _____
ZONE _____ ELEVATION _____ NORTHINGS (N) _____ EASTINGS (E) _____

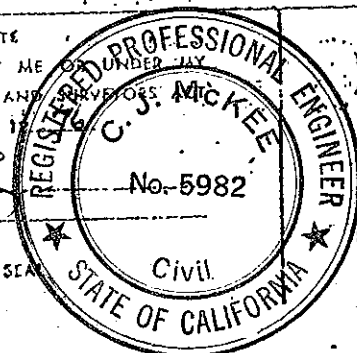
SKETCH: (Include reference tie or witness points, remarks and topo of area)



SURVEYOR'S CERTIFICATE
THIS CORNER RECORD WAS PREPARED BY ME C. J. MICKEE UNDER THE
DIRECTION IN CONFORMANCE WITH THE LAND SURVEYORS' ACT
ON JAN. 28

SIGNED C. J. Mickee

I.S. or R.C.E. No. _____



COUNTY SURVEYOR'S CERTIFICATE
THE CORNER RECORD WAS RECEIVED 2-4 1976
AND EXAMINED AND FILED 2-5 1976

BY A. Grote

TITLE: County Engineer

DOCUMENT No. 76-02-2

STATEMENT ON BACK OF SHEET

YES NO