

CORNER RECORD

COUNTY OF MADERA T. 85 R. 22E. M.D.B. MERIDIAN CALIF.

CORNER TYPE: GOV'T. CORNER () MEANDER () RANCHO () CONTROL () OTHER ()

CORNER IDENTIFICATION --- DATE OF VISIT OCT 11 1976



S 1/4 CORNER SEC. 9 T8S R22E M.D.B. & M.

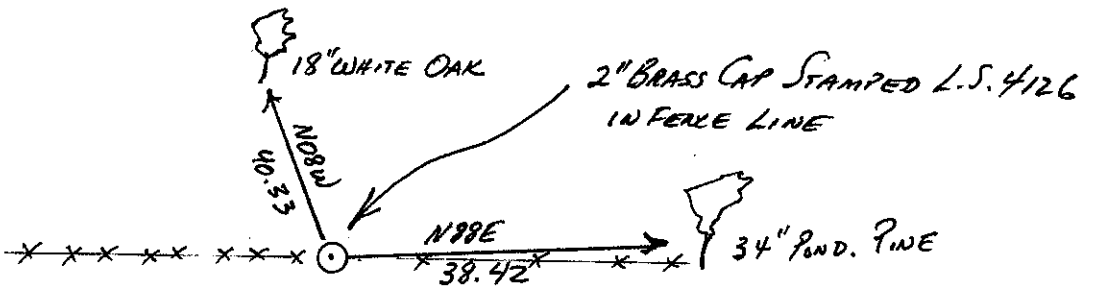
CORNER -- LEFT AS FOUND () FOUND & TAGGED () REESTABLISHED OBLITERATED CORNER ()
REBUILT ()

PHYSICAL DESCRIPTION OF CORNER FOUND: EVIDENCE & METHOD USED TO IDENTIFY OR REESTABLISH:
FND. 1 1/2" I.P. WITH 2" BRASS CAP STAMPED FOR S 1/4 SEC. 9 IN OLD FENCE LINE E-WEST. FOUND AN OLD OAK POST WIRED INTO FENCE & ROCK MOUND.

PHYSICAL DESCRIPTION OF MONUMENTS REBUILT OR PERPETUATED:

CALIFORNIA COORDINATE SYSTEM ORDER: FIRST () SECOND () THIRD ()
STATIONS USED: NOS (USC & GS) () STATE () COUNTY () OTHER () STATION _____
STATION _____ ZONE _____ ELEVATION _____ NORTHINGS (Y) _____
EASTINGS (X) _____

SKETCH: (INCLUDE REFERENCE TIE OR WITNESS POINTS, REMARKS AND TOPO OF AREA)



CORNER IS IN E-W FENCE LINE WITH ROCK MOUND ON WEST SLOPE APPROX. 250 EAST OF BOTTOM OF DRAW.

SURVEYOR'S CERTIFICATE

THIS CORNER RECORD WAS PREPARED BY ME OR UNDER MY DIRECTION IN CONFORMANCE WITH LAND SURVEYORS ACT ON



Oct. 27 1976
L. M. JENSEN
L.S. or R.C.E. NO. L.S. 4261

SEAL

COUNTY SURVEYOR'S CERTIFICATE

THE CORNER RECORD WAS RECEIVED 10-26-76 AND EXAMINED AND FILED 10-27-1976

BY: A. Grote
TITLE: Co. Engr.

DOCUMENT NO. 76-30-3
STATEMENT ON BACK OF SHEET
YES () NO ()