

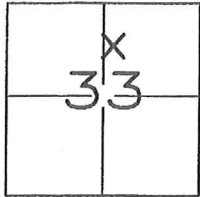
CORNER RECORD

Document Number _____

City of UNINCORPORATED

County of MADERA, California

Brief Legal Description SOUTHWEST CORNER OF LOT 11 OF QUARTZ MTN. HEIGHTS UNIT #1, BK. 40, PG. 35, M.C.R.



T.8S., R.21E.

CORNER TYPE

Government Corner Control
 Meander Property
 Rancho Other

Date of Survey 04/14/2015

COORDINATES(Optional)

N. _____
 E. _____
 Zone _____ NAD27 NAD83
 NAD83 Epoch _____
 Elev. _____
 Vert. Datum: NGVD29 NADV88
 Meas. Units: Metric Imperial

Corner - Left as found Found and tagged Established Reestablished Rebuilt

Identification and type of corner found: Evidence used to identify or procedure used to establish or reestablish the corner:

RESET THE SOUTHWEST CORNER OF LOT 11 BASED ON FOUND MONUMENTS OF RECORD AS SHOWN ON SHEET 2.

A description of the physical condition of the monument as found and as set or reset: _____

SET 5/8" REBAR, TAGGED LS 8393.

SURVEYOR'S STATEMENT

This Corner Record was prepared by me or under my direction in conformance with
 the Land Surveyor's Act on MAY 27, 2015.

Signed [Signature] P.L.S. or R.C.E. No.: PLS 8393



COUNTY SURVEYOR'S STATEMENT

This Corner Record was received July 7, 2015 and examined
 and filed August 4, 2015.

Signed [Signature] P.L.S. or R.C.E. No.: PLS 6968

Title Acting County Surveyor

County Surveyor's Comment _____

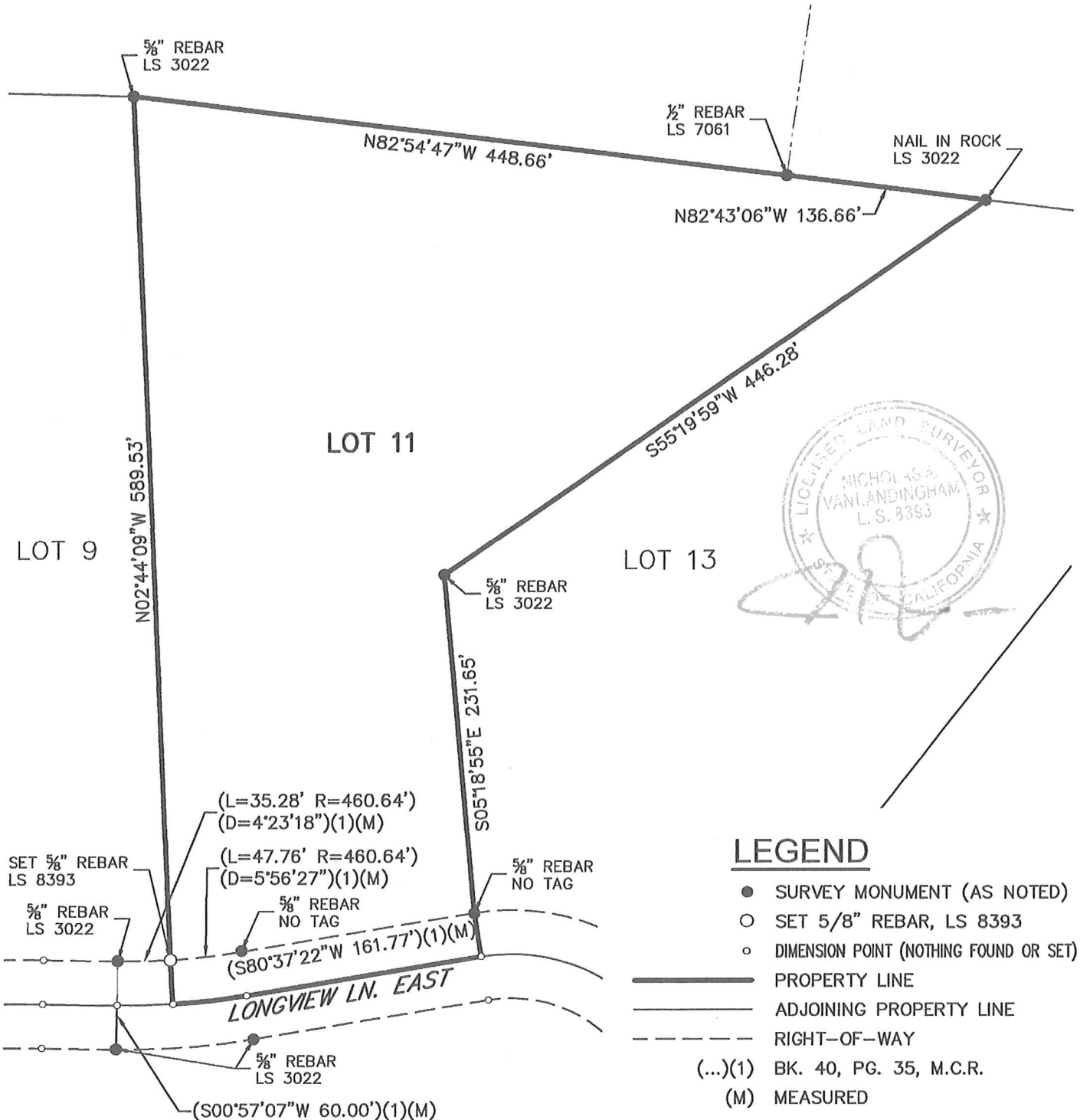


CORNER RECORD

LOT 11 OF QUARTZ MOUNTAIN HEIGHTS UNIT #1,
RECORDED IN BOOK 40 OF MAPS AT PAGE 35, M.C.R.



SCALE 1"=100'



LEGEND

- SURVEY MONUMENT (AS NOTED)
- SET 5/8" REBAR, LS 8393
- DIMENSION POINT (NOTHING FOUND OR SET)
- PROPERTY LINE
- ADJOINING PROPERTY LINE
- - - RIGHT-OF-WAY
- (...)(1) BK. 40, PG. 35, M.C.R.
- (M) MEASURED

JONES SNYDER & ASSOCIATES
P.O. BOX 2292, OAKHURST, CA 93644
(559)683-7661 WWW.JSSURVEYING.COM

DATE: MAY 27, 2015 DWG FILE: 15-112MOS
JOB NO: 15-112 DRAWN BY: RJD