

SR# 91-057
MAD. 41' PM. 24.8
TO 25.4

CORNER RECORD

COUNTY OF MADERA T. 8 S. R. 21 E. M.D.B. MERIDIAN CALIFORNIA
CORNER TYPE: GOV'T. CORNER MEANDER RANCHO CONTROL OTHER
CORNER IDENTIFICATION - DATE OF VISIT MAY 30, 19 91



N.E. CORNER OF SECTION 30 ⁸/₂₁

CORNER - LEFT AS FOUND FOUND AND TAGGED REESTABLISHED OBLITERATED CORNER RESULT

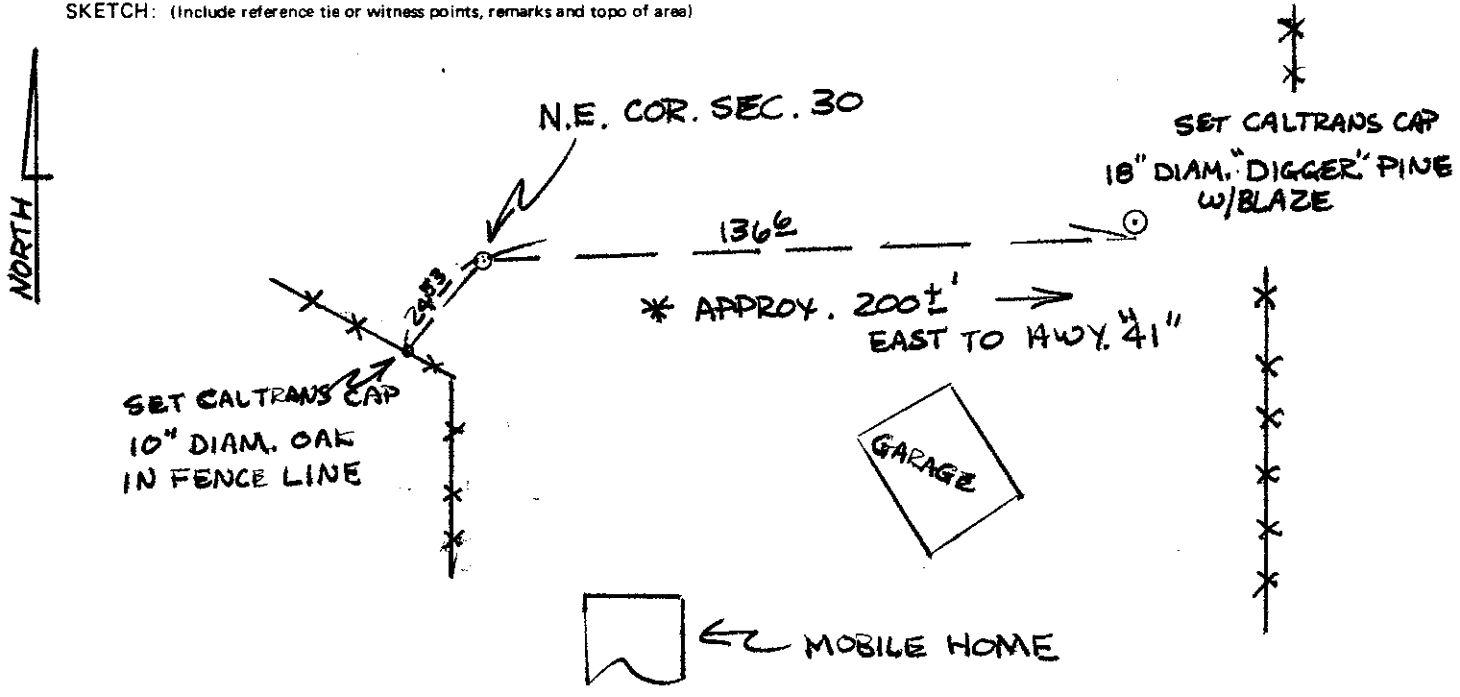
PHYSICAL DESCRIPTION OF CORNER FOUND; EVIDENCE AND METHOD USED TO IDENTIFY OR REESTABLISH

FD. 1/4" I.P. w/L.S. 2737 TAG

PHYSICAL DESCRIPTION OF MONUMENTS REBUILT OR PERPETUATED

CALIFORNIA COORDINATE SYSTEM ORDER: FIRST SECOND THIRD
STATIONS USED: NGS (USC & GS) STATE COUNTY OTHER STATION _____ STATION _____
ZONE _____ ELEVATION _____ NORTHINGS (Y) _____ EASTINGS (X) _____

SKETCH: (Include reference tie or witness points, remarks and topo of area)



SURVEYOR'S CERTIFICATE
THIS CORNER RECORD WAS PREPARED BY ME OR UNDER MY DIRECTION IN CONFORMANCE WITH THE LAND SURVEYORS ACT ON July 3 19 91 FOR THE STATE OF CALIFORNIA

SIGNED: James W. McLean
L.S. or R.C.E. No.: PARTY CHIEF
SEAL

COUNTY SURVEYOR'S CERTIFICATE
THE CORNER RECORD WAS RECEIVED 7.5 19 91 AND EXAMINED AND FILED 7-10 19 91
BY: W. Bruce Stinson
TITLE: C. Engle's

DOCUMENT No. _____
STATEMENT ON BACK OF SHEET YES NO