

SR# 91-057
 MAD. "41" PM 24.8
 TO 25.4

CORNER RECORD

COUNTY OF MADERA T. B.S. R. 21E. M.D.B. MERIDIAN CALIFORNIA
 CORNER TYPE: GOV'T. CORNER MEANDER RANCHO CONTROL OTHER
 CORNER IDENTIFICATION - DATE OF VISIT MAY 30, 1991



N 1/4 CORNER, SEC. 30 B/21

CORNER - LEFT AS FOUND FOUND AND TAGGED REESTABLISHED OBLITERATED CORNER REBUILT

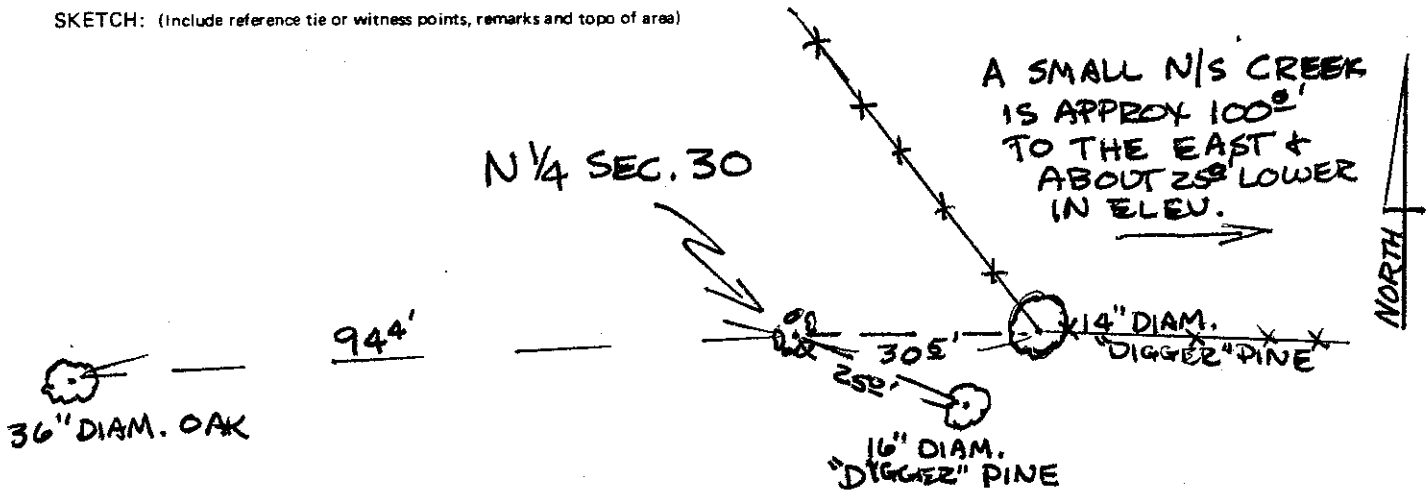
PHYSICAL DESCRIPTION OF CORNER FOUND; EVIDENCE AND METHOD USED TO IDENTIFY OR REESTABLISH

FD. 5/8" DRILL HOLE IN LARGE BOULDER W/ ROCK MOUND SURROUNDING.
 A 2' LONG PIECE OF 1/2" REBAR (APPROX 1 1/2 FOOT UP) W/ LARGE YELLOW PLASTIC ROUND CAP (NO TAG#) WAS FD. IN THE DRILL HOLE, ALSO.

PHYSICAL DESCRIPTION OF MONUMENTS REBUILT OR PERPETUATED

CALIFORNIA COORDINATE SYSTEM ORDER: FIRST SECOND THIRD
 STATIONS USED: NGS (USC & GS) STATE COUNTY OTHER STATION _____ STATION _____
 ZONE _____ ELEVATION _____ NORTHINGS (Y) _____ EASTINGS (X) _____

SKETCH: (Include reference tie or witness points, remarks and topo of area)



SURVEYOR'S CERTIFICATE

THIS CORNER RECORD WAS PREPARED BY ME OR UNDER MY DIRECTION IN CONFORMANCE WITH THE LAND SURVEYORS ACT ON JULY 3 1991 FOR THE STATE OF CALIFORNIA

SIGNED: [Signature]
 L.S. or R.C.E. No.: PARTY CHIEF

SEAL

COUNTY SURVEYOR'S CERTIFICATE

THE CORNER RECORD WAS RECEIVED 7.5 1991 AND EXAMINED AND FILED 7-10 1991
 BY: [Signature]
 TITLE: Co. Eng'n

DOCUMENT No. _____

STATEMENT ON BACK OF SHEET

YES NO