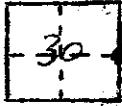


CORNER RECORD

COUNTY OF MADEIRA T. 85 R. 71E MERIDIAN CALIF.

CORNER TYPE: GOV'T CORNER MEANDER RANCHO CONTROL OTHER

CORNER IDENTIFICATION --- DATE OF VISIT 15 Oct. 19 75



NE 1/4 Cor 30 | 29

CORNER -- LEFT AS FOUND FOUND & TAGGED REESTABLISHED OBLITERATED CORNER REBUILT

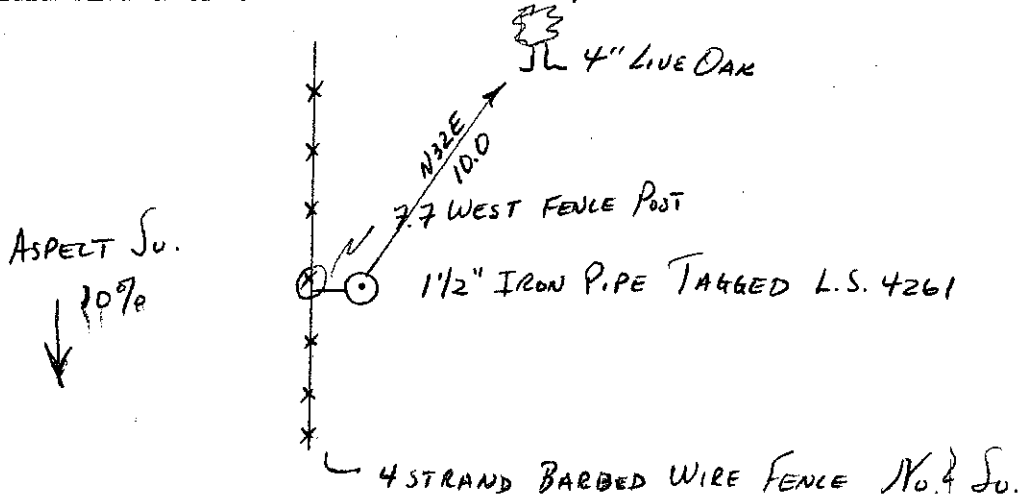
PHYSICAL DESCRIPTION OF CORNER FOUND; EVIDENCE & METHOD USED TO IDENTIFY OR REESTABLISH: FOUND 1 1/2" IRON PIPE WITH NO TAG, TAGGED L.S. 4261, CORNER WEST OF FENCE 7.7 FT.

PHYSICAL DESCRIPTION OF MONUMENTS REBUILT OR PERPETUATED:

TAGGED L.S. 4261

CALIFORNIA COORDINATE SYSTEM ORDER: FIRST SECOND THIRD
STATIONS USED: NOS (USC & GS) STATE COUNTY OTHER STATION _____
STATION _____ ZONE _____ ELEVATION _____ NORTHINGS (Y) _____
EASTINGS (X) _____

SKETCH: (INCLUDE REFERENCE TIE OR WITNESS POINTS, REMARKS AND TOPO OF AREA)



SURVEYOR'S CERTIFICATE
THIS CORNER RECORD WAS PREPARED BY ME OR UNDER MY DIRECTION IN CONFORMANCE WITH THE LAND SURVEYORS ACT ON 15 OCT.
SIGNED: L. M. JENSEN
L.S. or R.C.E. No. L.S. 4261
NO. 4261
STATE OF CALIFORNIA

COUNTY SURVEYOR'S CERTIFICATE
THE CORNER RECORD WAS RECEIVED 10/17
19 75, EXAMINED AND FILED 10-20-75
BY: A. G. Grote
TITLE: County Engineer
DOCUMENT No. 75-33-05
STATEMENT ON BACK OF SHEET
YES NO