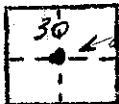


CORNER RECORD

COUNTY OF MADERA T. 8S. R. 7E. MERIDIAN CALIF.

CORNER TYPE: GOV'T CORNER  MEANDER  RANCHO  CONTROL  OTHER

CORNER IDENTIFICATION --- DATE OF VISIT 15 Oct. 19 75



c/4 - 30-8-71

CORNER -- LEFT AS FOUND  FOUND & TAGGED  REESTABLISHED OBLITERATED CORNER   
REBUILT  - SET

PHYSICAL DESCRIPTION OF CORNER FOUND; EVIDENCE & METHOD USED TO IDENTIFY OR REESTABLISH: SET CENTER 1/4 OF SECTION 30 BY PROPORTION

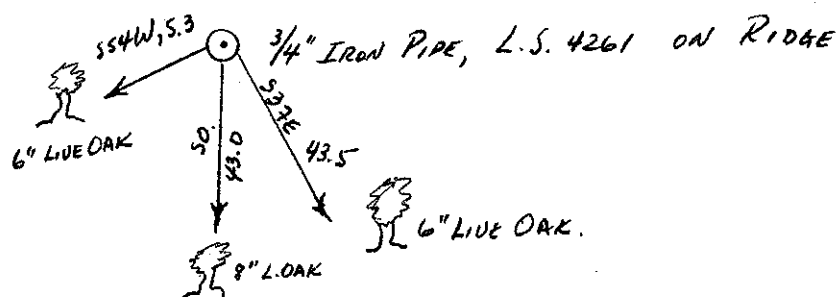
PHYSICAL DESCRIPTION OF MONUMENTS REBUILT OR PERPETUATED:

SET 3/4" IRON PIPE TAGGED L.S. 4761, ON SMALL RIDGE

CALIFORNIA COORDINATE SYSTEM ORDER: FIRST  SECOND  THIRD   
STATIONS USED: NOS (USC & GS)  STATE  COUNTY  OTHER  STATION \_\_\_\_\_  
STATION \_\_\_\_\_ ZONE \_\_\_\_\_ ELEVATION \_\_\_\_\_ NORTHINGS (Y) \_\_\_\_\_  
EASTINGS (X) \_\_\_\_\_

SKETCH: (INCLUDE REFERENCE TIE OR WITNESS POINTS, REMARKS AND TOPO OF AREA)

↑ 10°  
ASPECT NORTH



SURVEYOR'S CERTIFICATE

THIS CORNER RECORD WAS PREPARED BY ME OR UNDER MY DIRECTION IN CONFORMANCE WITH THE LAND SURVEYORS ACT ON OCT.

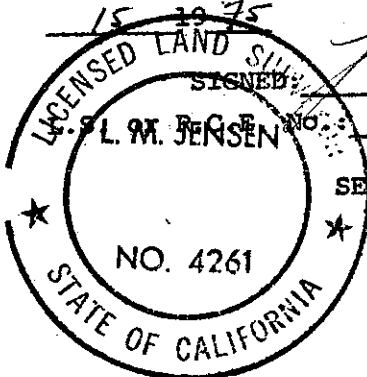
15 19 75

SIGNED: \_\_\_\_\_

L. M. JENSEN

L.S. 4761

SEAL



COUNTY SURVEYOR'S CERTIFICATE

THE CORNER RECORD WAS RECEIVED 10/17

19 75 AND EXAMINED AND FILED 10-20-75

BY: A. O. [Signature]

TITLE: County Engineer

DOCUMENT No. 75-33-01

STATEMENT ON BACK OF SHEET

YES  NO