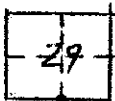


CORNER RECORD

COUNTY OF MADERA T. 85 R. 21E. M.D.B. & M. MERIDIAN CALIF.

CORNER TYPE: GOV'T. CORNER () MEANDER () RANCHO () CONTROL () OTHER ()

CORNER IDENTIFICATION --- DATE OF VISIT 11-6- 1975



5/4 CORNER SEC. 29 T85 R21E.

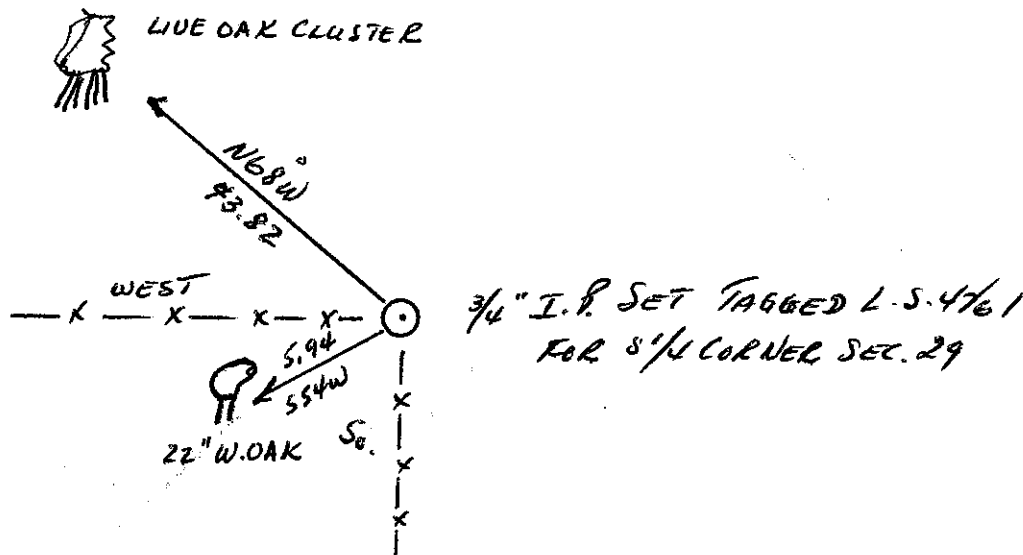
CORNER -- LEFT AS FOUND () FOUND & TAGGED () REESTABLISHED OBLITERATED CORNER ()
REBUILT (X)

PHYSICAL DESCRIPTION OF CORNER FOUND: EVIDENCE & METHOD USED TO IDENTIFY OR REESTABLISH: ROCK BOUND WITH 1 OLD STUMP BEARING TREE NEAR FENCE INTERSECTION. SET 3/4" I.P. TAGGED L.S. 4761 FOR CORNER.

PHYSICAL DESCRIPTION OF MONUMENTS REBUILT OR PERPETUATED:
SET 3/4" I.P. TAGGED L.S. 4761 FOR 5/4 CORNER SEC. 29 T85 R21E. M.D.B. & M.

CALIFORNIA COORDINATE SYSTEM ORDER: FIRST () SECOND () THIRD ()
STATIONS USED: NOS (USC & GS) () STATE () COUNTY () OTHER () STATION _____
STATION _____ ZONE _____ ELEVATION _____ NORTHINGS (Y) _____
EASTINGS (X) _____

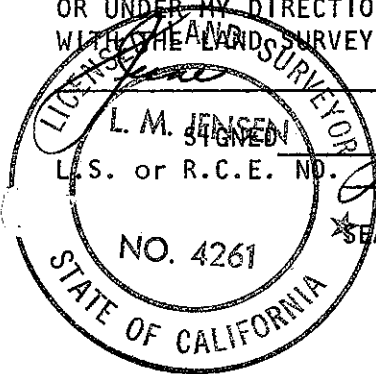
SKETCH: (INCLUDE REFERENCE TIE OR WITNESS POINTS, REMARKS AND TOPO OF AREA)



SURVEYOR'S CERTIFICATE

THIS CORNER RECORD WAS PREPARED BY ME OR UNDER MY DIRECTION IN CONFORMANCE WITH THE LAND SURVEYORS ACT ON 15

1976



L. M. JENSEN
L.S. or R.C.E. NO. L.S. 4761

COUNTY SURVEYOR'S CERTIFICATE

THE CORNER RECORD WAS RECEIVED 7-2-76 AND EXAMINED AND FILED 19

BY: A. Brots
TITLE: County Engineer

DOCUMENT NO. 76-15-1
STATEMENT ON BACK OF SHEET
YES () NO (X)