

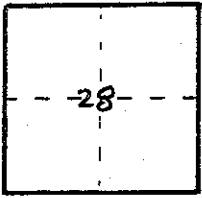
CORNER RECORD

Document Number _____

City of _____

County of Madera, California

Brief Legal Description Parcels 1, 2 & 3 of Parcel Map 1616, BK 26, P. 161
M.C.R. T8S R21E



CORNER TYPE

Government Corner Control
Meander Property
Rancho Other
Date of Survey July 23, 1990

COORDINATES
(Optional)

N. _____
E. _____
Zone _____ Datum _____
Elev. _____

Corner — Left as found Found and tagged Established Reestablished Rebuilt

Identification and type of corner found: Evidence used to identify or procedure used to establish or reestablish the corner:
Set 3/4" I.P.A. tagged L.S. 4509

A description of the physical condition of the monument as found and as set or reset:
Found 3/4" I.P.A. tagged L.S. 4298

SURVEYOR'S STATEMENT

This Corner Record was prepared by me or under my direction in conformance with the Land Surveyors' Act on August 17, 2007

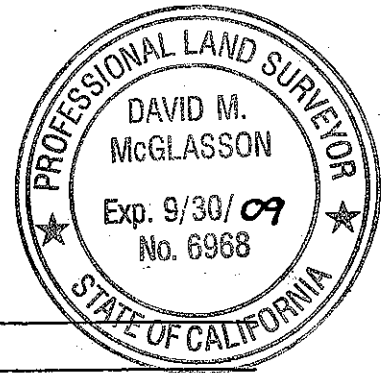
Signed Douglas Bredahl L.S. Number 4509



COUNTY SURVEYOR'S STATEMENT

This Corner Record was received 8/30/2007 and examined and filed 9/9/2007

Signed David McGlasson Title ACTING CO. SURVEYOR



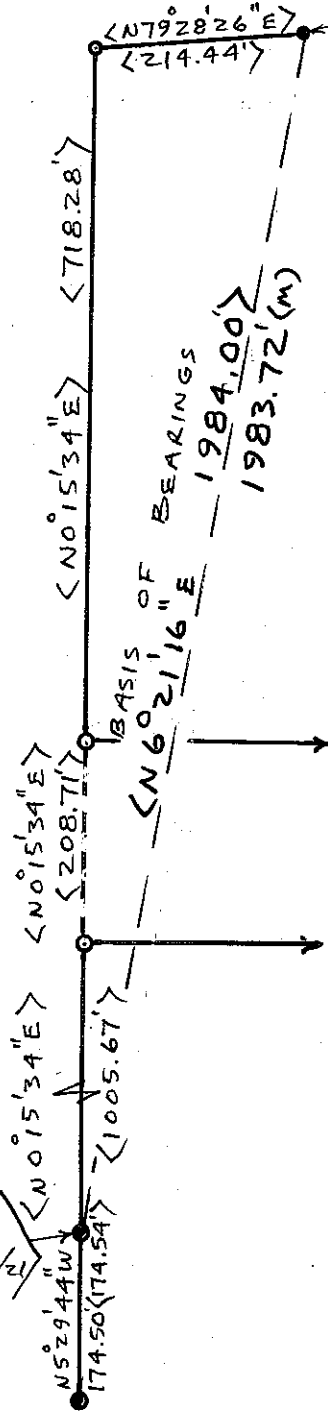
County Surveyor's Comment _____

NORTH



1"=200'

3/4" I.P. L.S. 4298 AT SOUTHERLY R/W OF Co. Rd. 417 AND AT EASTERLY R/W OF QUARTZ MTN. Rd.



1" I.P. IN R.K. MD. L.S. 2741 FOR W 1/4 SECTION 28, 8/21

BASIS OF BEARINGS
N60°21'16\"/>

7005/08/8

7005/p/p

LEGEND

- MONUMENTS FOUND & ACCEPTED, 3/4" I.P. TAGGED L.S. 4298
- MONUMENTS SET, 3/4" I.P. TAGGED L.S. 4509
- L...> RECORD DATA FROM PARCEL MAP 1616, BK. 26, P. 161 M.C.R.