

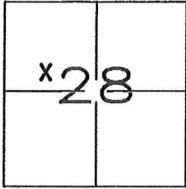
CORNER RECORD

Document Number _____

City of UNINCORPORATED

County of MADERA, California

Brief Legal Description LOT 56 OF INDIAN LAKES ESTATES, BOOK 15 OF MAPS AT PAGE 26-44, M.C.R.



T.B.S., R.21E.

CORNER TYPE

Government Corner Control
 Meander Property
 Rancho Other

Date of Survey FEBRUARY 4, 2016

COORDINATES(Optional)

N. XXX
 E. XXX
 Zone XXX NAD27 NAD83
 NAD83 Epoch XXX
 Elev. XXX
 Vert. Datum: NGVD29 NADV88
 Meas. Units: Metric Imperial

Corner - Left as found Found and tagged Established Reestablished Rebuilt

Identification and type of corner found: Evidence used to identify or procedure used to establish or reestablish the corner:

FOUND 3/4" IRON PIPES AT RECORD POSITION, AS SHOWN ON SHEET 2

A description of the physical condition of the monument as found and as set or reset: _____

RE-ESTABLISHED CORNER AT RECORD POSITION, MONUMENTED WITH 5/8" REBAR AND PLASTIC CAP TAGGED

LS 8779, AS SHOWN ON SHEET 2

SURVEYOR'S STATEMENT

This Corner Record was prepared by me or under my direction in conformance with
 the Land Surveyor's Act on FEBRUARY 4, 2016.

Signed [Signature] P.L.S. or R.C.E. No.: PLS 8779



COUNTY SURVEYOR'S STATEMENT

This Corner Record was received February 12, 2016 and examined
 and filed February 24, 2016.

Signed [Signature] P.L.S. or R.C.E. No.: LS 6968

Title Acting County Surveyor

County Surveyor's Comment _____

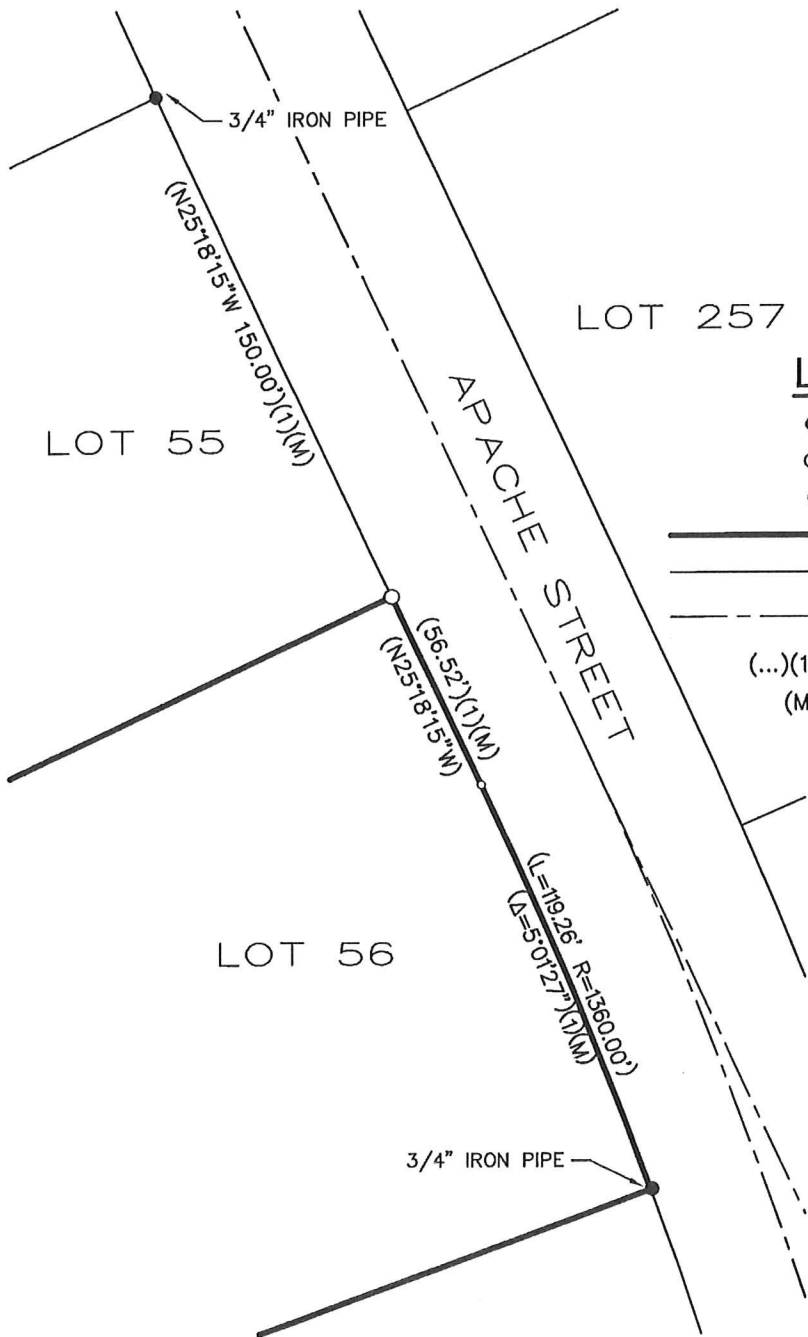




SCALE 1"=50

CORNER RECORD

LOT 56 OF INDIAN LAKES ESTATES
RECORDED IN BOOK 15 OF MAPS AT PAGE
26-44, M.C.R.



LEGEND

- FOUND SURVEY MONUMENT (AS NOTED)
- SET 5/8" REBAR, W/CAP, MARKED LS 8779
- DIMENSION POINT (NOTHING FOUND OR SET)
- PROPERTY LINE
- ADJOINING PROPERTY LINE
- - - - - RIGHT-OF-WAY CENTERLINE
- (...)(1) DATA PER BK. 15, PG. 26-44, M.C.R.
- (M) MEASURED

JONES SNYDER & ASSOCIATES
P.O. BOX 2292, OAKHURST, CA 93644
(559)683-7661 WWW.JSSURVEYING.COM

DATE: 02/04/16 DWG FILE: 16-055CR.dwg
JOB NO: 16-055 DRAWN BY: NAV