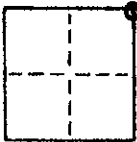


**CORNER RECORD**

COUNTY OF MADERA T. 8 R. 21 M.D.B. & M MERIDIAN CALIFORNIA  
 CORNER TYPE: GOV'T. CORNER  MEANDER  RANCHO  CONTROL  OTHER   
 CORNER IDENTIFICATION -- DATE OF VISIT 10-22 1974



**NE CORNER OF SEC. 20 - 8/21**

CORNER -- LEFT AS FOUND  FOUND AND TAGGED  REESTABLISHED OBLITERATED CORNER  REBUILT

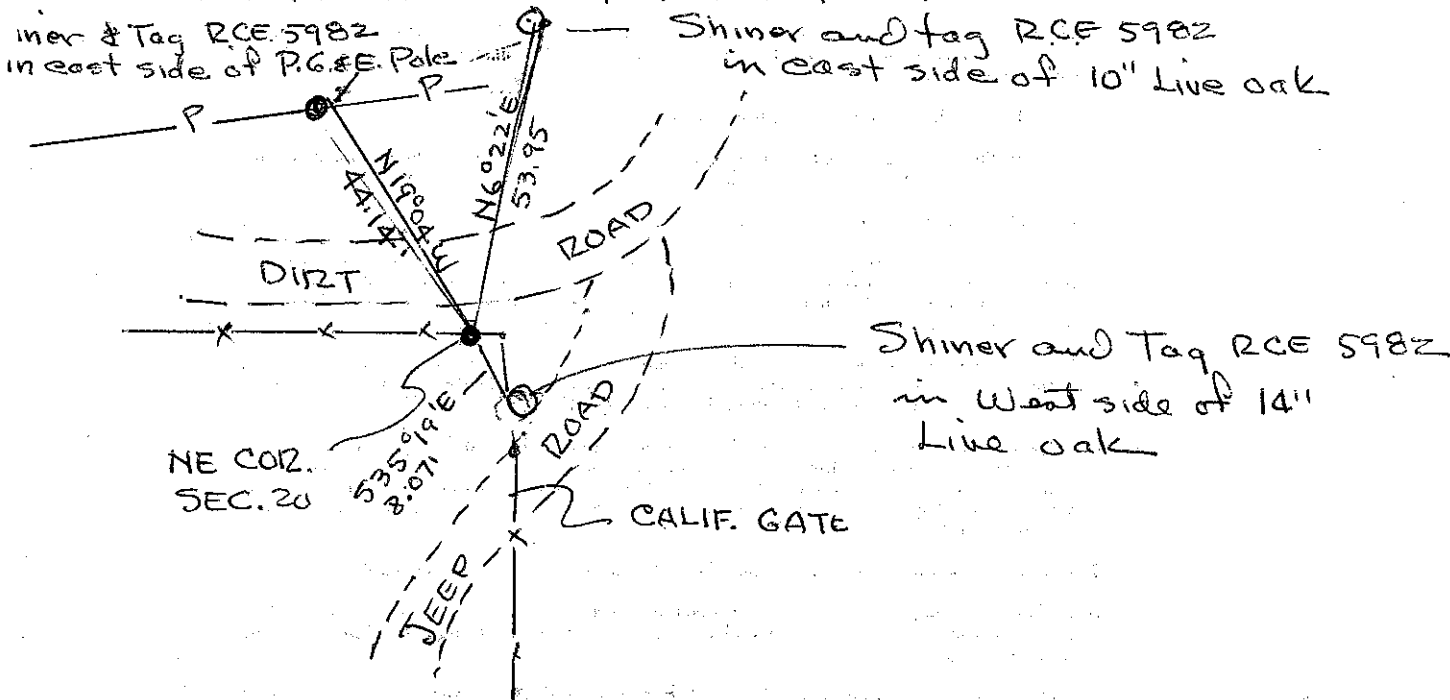
PHYSICAL DESCRIPTION OF CORNER FOUND; EVIDENCE AND METHOD USED TO IDENTIFY OR REESTABLISH

**1" IRON PIPE WITH TAG L.S. 2737**

PHYSICAL DESCRIPTION OF MONUMENTS REBUILT OR PERPETUATED

CALIFORNIA COORDINATE SYSTEM ORDER: FIRST  SECOND  THIRD   
 STATIONS USED: NGS (USC & GS)  STATE  COUNTY  OTHER  STATION \_\_\_\_\_ STATION \_\_\_\_\_  
 ZONE \_\_\_\_\_ ELEVATION \_\_\_\_\_ NORTHINGS (N) \_\_\_\_\_ EASTINGS (E) \_\_\_\_\_

SKETCH: (Include reference tie or witness points, remarks and topo of area)



**SURVEYOR'S CERTIFICATE**  
 THIS CORNER RECORD WAS PREPARED BY ME OR UNDER MY DIRECTION IN CONFORMANCE WITH THE LAND SURVEYORS ACT ON DEC 30, 1974.  
 SIGNED: [Signature]  
 L.S. or R.C.E. No. 5982

SEAL

**COUNTY SURVEYOR'S CERTIFICATE**  
 THE CORNER RECORD WAS RECEIVED Jan. 2, 1975 AND EXAMINED AND FILED Jan 2, 1975.  
 BY: [Signature]  
 TITLE: County Engineer  
 DOCUMENT No. 75-1-2  
 STATEMENT ON BACK OF SHEET YES  NO