

SR#91-057  
 MAD. 41 P.M. 24.8  
 TO 25.4

**CORNER RECORD**

COUNTY OF MADERA T. B S. R. 21 E. M.D.B. MERIDIAN CALIFORNIA  
 CORNER TYPE: GOV'T. CORNER  MEANDER  RANCHO  CONTROL  OTHER   
 CORNER IDENTIFICATION - DATE OF VISIT JUNE 3, 1991



N. 1/4 CORNER, SECTION 20 8/21

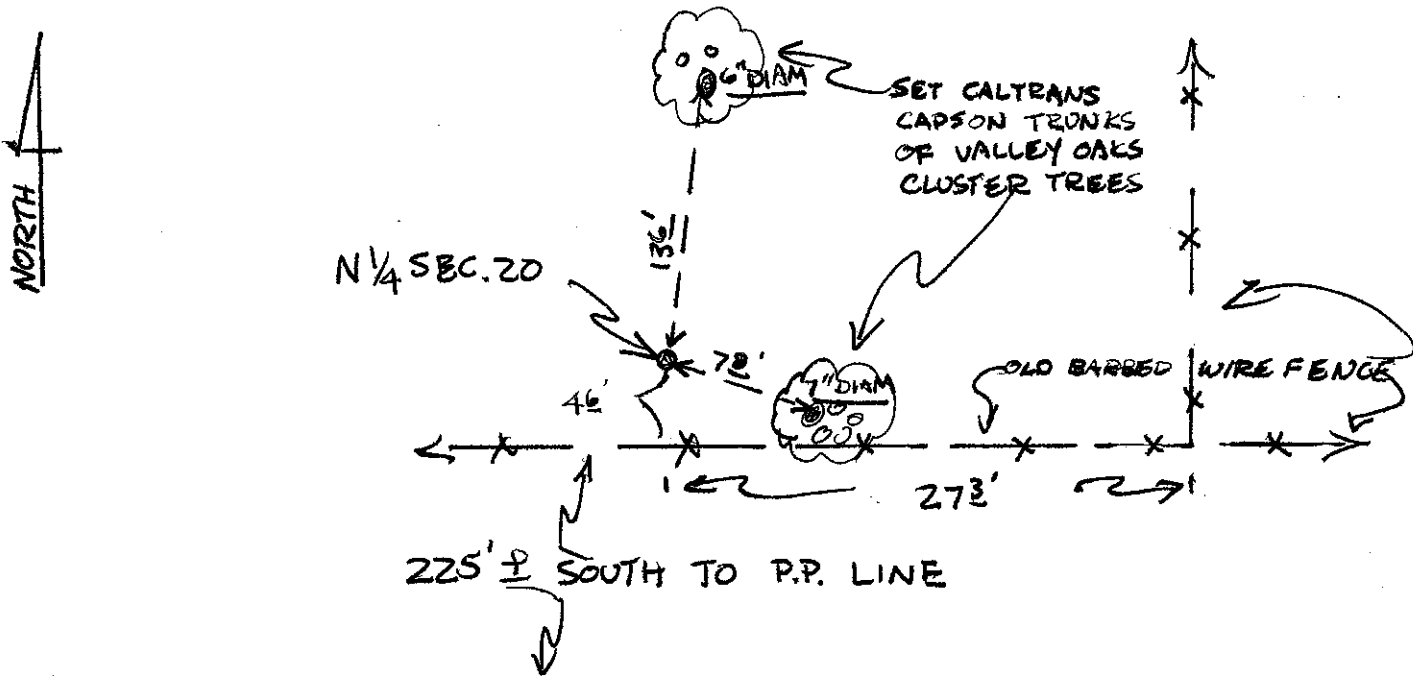
CORNER - LEFT AS FOUND  FOUND AND TAGGED  REESTABLISHED OBLITERATED CORNER  REBUILT

PHYSICAL DESCRIPTION OF CORNER FOUND; EVIDENCE AND METHOD USED TO IDENTIFY OR REESTABLISH  
 FD. 3/4" I.P. (VERY RUSTY) DROVE 1" GALV. IRON PIPE OVER, NO TAG FD.

PHYSICAL DESCRIPTION OF MONUMENTS REBUILT OR PERPETUATED  
 1" GALVINIZED I.P. W/ RUSTY 3/4" I.P. INSIDE

CALIFORNIA COORDINATE SYSTEM ORDER: FIRST  SECOND  THIRD   
 STATIONS USED: NGS (USC & GS)  STATE  COUNTY  OTHER  STATION \_\_\_\_\_ STATION \_\_\_\_\_  
 ZONE \_\_\_\_\_ ELEVATION \_\_\_\_\_ NORTHINGS (Y) \_\_\_\_\_ EASTINGS (X) \_\_\_\_\_

SKETCH: (Include reference tie or witness points, remarks and topo of area)



**SURVEYOR'S CERTIFICATE**  
 THIS CORNER RECORD WAS PREPARED BY ME OR UNDER MY DIRECTION IN CONFORMANCE WITH THE LAND SURVEYORS ACT ON JULY 3 1991 FOR THE STATE OF CALIFORNIA  
 SIGNED: [Signature]  
 L.S. or R.C.E. No.: PARTY CLERK  
 SEAL

**COUNTY SURVEYOR'S CERTIFICATE**  
 THE CORNER RECORD WAS RECEIVED 7-5 1991 AND EXAMINED AND FILED 7-10 1991.  
 BY: [Signature]  
 TITLE: CO. Eng'g.  
 DOCUMENT No. \_\_\_\_\_  
 STATEMENT ON BACK OF SHEET YES  NO