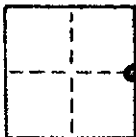


CORNER RECORD

COUNTY OF MADERA T. 8 R. 21 N. 1/2 S. 1/4 E. 1/4 MERIDIAN CALIFORNIA

CORNER TYPE: GOVT. CORNER MEANDER RANCHO CONTROL OTHER

CORNER IDENTIFICATION - DATE OF VISIT 10/22/1974



E 1/4 CORNER OF SEC. 20 - 8/21

CORNER - LEFT AS FOUND FOUND AND TAGGED REESTABLISHED OBLITERATED CORNER REBUILT

PHYSICAL DESCRIPTION OF CORNER FOUND; EVIDENCE AND METHOD USED TO IDENTIFY OR REESTABLISH

1" IRON PIPE WITH TAG L.S. 2737
IN ROCK MOUND AS WITNESS. Cor., See Next
PG.

PHYSICAL DESCRIPTION OF MONUMENTS REBUILT OR PERPETUATED

(Faint, illegible text)

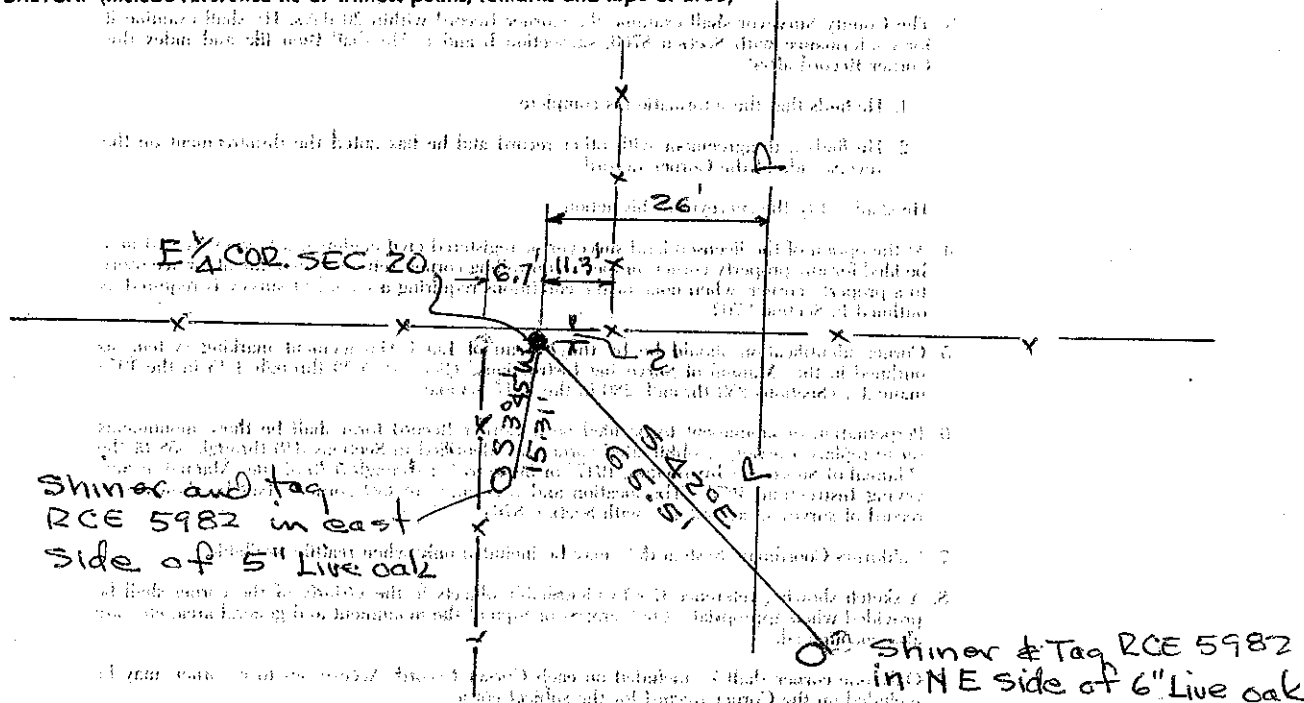
(Faint, illegible text)

CALIFORNIA COORDINATE SYSTEM: ORDER FIRST SECOND THIRD STATION

STATIONS USED: NGS (USC & GS) STATE COUNTY OTHER STATION _____

ZONE _____ ELEVATION _____ NORTHINGS (N) _____ EASTINGS (E) _____

SKETCH: (Include reference tie or witness points, remarks and topo of area)



SURVEYOR'S CERTIFICATE
THIS CORNER RECORD WAS PREPARED BY ME OR UNDER MY
DIRECTION IN CONFORMANCE WITH THE LAND SURVEYORS ACT
ON DEC. 30 19 74
SIGNED: [Signature]
R.C.E. No. 5982

COUNTY SURVEYOR'S CERTIFICATE
THE CORNER RECORD WAS RECEIVED Jan. 2 19 75
AND EXAMINED AND FILED Jan 2 19 75
BY: A. O. Grote
TITLE: County Engineer
DOCUMENT No. 75-1-3