

SR #91-057  
MAD. 41" PM 24.8  
TO 25.4

CORNER RECORD

COUNTY OF MADERA T. 8 S. R. 21 E. M.D.B. MERIDIAN CALIFORNIA  
CORNER TYPE: GOV'T. CORNER  MEANDER  RANCHO  CONTROL  OTHER   
CORNER IDENTIFICATION - DATE OF VISIT MAY 30, 1991



N.E. SEC. COR. 19 8/21

CORNER - LEFT AS FOUND  FOUND AND TAGGED  REESTABLISHED OBLITERATED CORNER  REBUILT

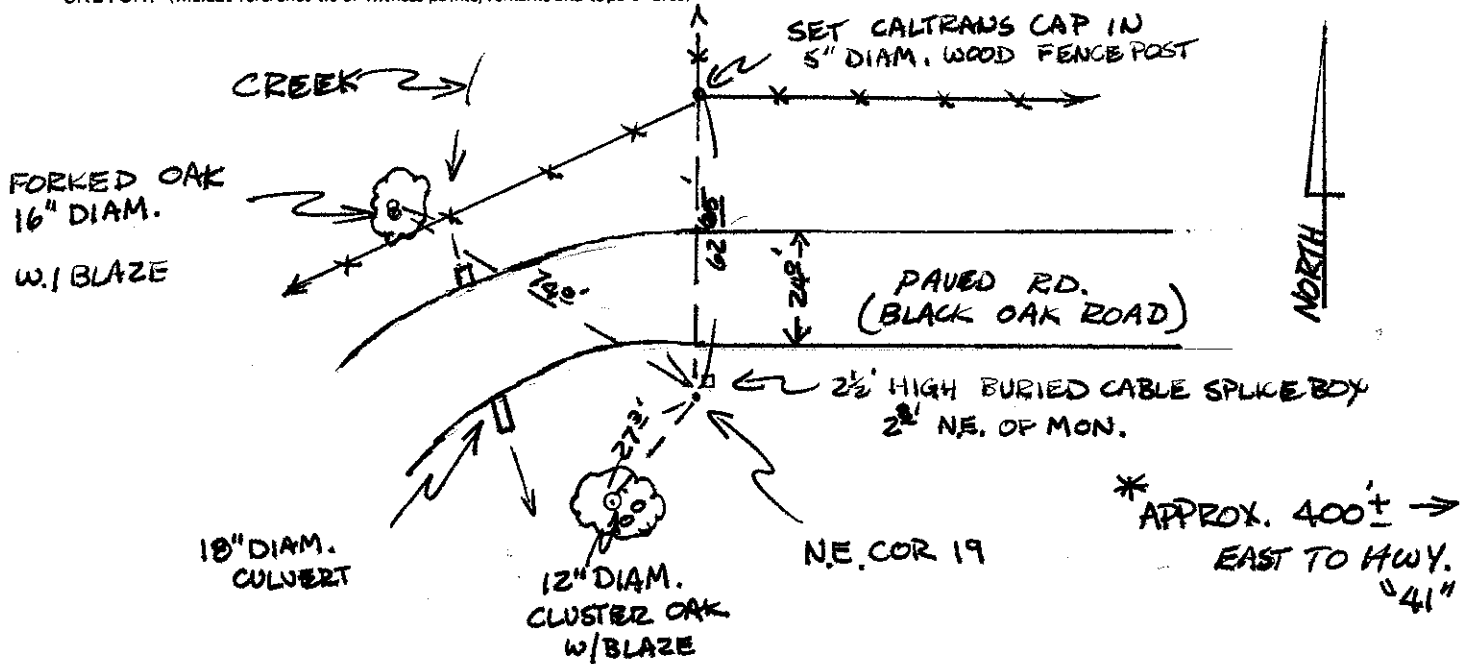
PHYSICAL DESCRIPTION OF CORNER FOUND; EVIDENCE AND METHOD USED TO IDENTIFY OR REESTABLISH

FD. 1" I.P. W/R.C.E. 5982 TAG 3" UP

PHYSICAL DESCRIPTION OF MONUMENTS REBUILT OR PERPETUATED

CALIFORNIA COORDINATE SYSTEM ORDER: FIRST  SECOND  THIRD   
STATIONS USED: NGS (USC & GS)  STATE  COUNTY  OTHER  STATION \_\_\_\_\_ STATION \_\_\_\_\_  
ZONE \_\_\_\_\_ ELEVATION \_\_\_\_\_ NORTHINGS (Y) \_\_\_\_\_ EASTINGS (X) \_\_\_\_\_

SKETCH: (Include reference tie or witness points, remarks and topo of area)



SURVEYOR'S CERTIFICATE  
THIS CORNER RECORD WAS PREPARED BY ME OR UNDER MY DIRECTION IN CONFORMANCE WITH THE LAND SURVEYORS ACT ON July 3 1991 FOR THE STATE OF CALIFORNIA

SIGNED: [Signature]  
L.S. or R.C.E. No.: PARTY CHIEF

SEAL

COUNTY SURVEYOR'S CERTIFICATE  
THE CORNER RECORD WAS RECEIVED 7.5 1991 AND EXAMINED AND FILED 7-10 1991 BY: Dave Shinton TITLE: Co. Eng'r

DOCUMENT No. \_\_\_\_\_

STATEMENT ON BACK OF SHEET

YES  NO