

CORNER RECORD

C. OF Madura T. 8S R. 21E M.D.B.F. MERIDIAN CALIFORNIA

CORNER TYPE: GOVT. CORNER MEANDER RANCHO CONTROL OTHER

CORNER IDENTIFICATION — DATE OF VISIT 8-17 1989



C14 18-8-21

CORNER — LEFT AS FOUND FOUND AND TAGGED REESTABLISHED OBLITERATED CORNER REBUILT

PHYSICAL DESCRIPTION OF CORNER FOUND, EVIDENCE AND METHOD USED TO IDENTIFY OR REESTABLISH

FND. 3/4" I.P. & TAG L.S. 4261 IN ROCK MOUND ON 2146 TO P
CORNER SET SYO-78 ON PARCEL MAP NO. 1472 BLE 24 PG 199.

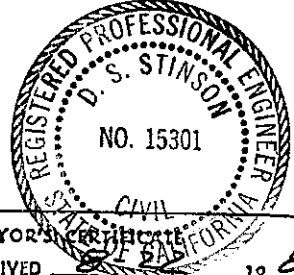
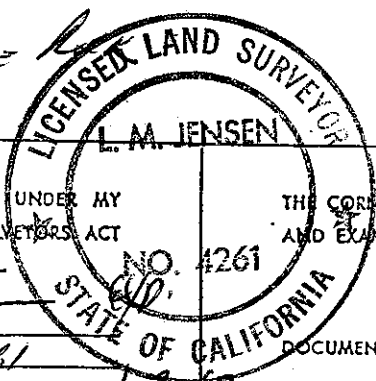
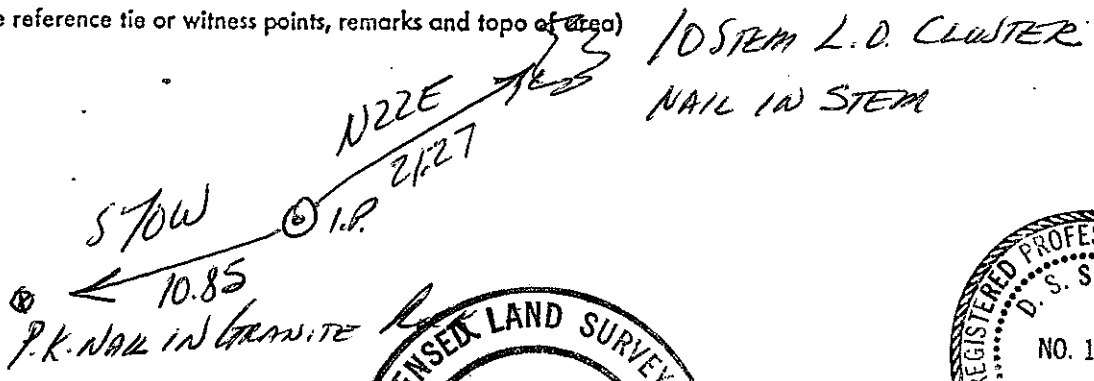
PHYSICAL DESCRIPTION OF MONUMENTS REBUILT OR PERPETUATED

Left As Found

CALIFORNIA COORDINATE SYSTEM ORDER: FIRST SECOND THIRD
 METHODS USED: NGS (USC & GS) STATE COUNTY OTHER STATION _____ STATION _____
 ZONE _____ ELEVATION _____ NORTHINGS (Y) _____ EASTINGS (X) _____

(Fold)

SKETCH: (Include reference tie or witness points, remarks and topo of area)



SURVEYOR'S CERTIFICATE

THIS CORNER RECORD WAS PREPARED BY ME OR UNDER MY DIRECTION IN CONFORMANCE WITH THE LAND SURVEYORS ACT

THE CORNER RECORD WAS RECEIVED AND EXAMINED AND FILED 8-22 1989

SIGNED: [Signature] 1989
 L.S. or R.C.E. No. L.S. 4261

BY: [Signature]
 TITLE: County Eng'r.

DOCUMENT No. _____

SEAL

STATEMENT ON BACK OF SHEET

YES NO