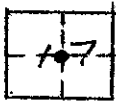


CORNER RECORD

COUNTY OF MADERA T. 8S R. 21E. M.D.B. 4 MERIDIAN CALIF.

CORNER TYPE: GOV'T. CORNER () MEANDER () RANCHO () CONTROL () OTHER ()

CORNER IDENTIFICATION --- DATE OF VISIT 30 August 19 76



C/4 SEC. 17/8/21

CORNER -- LEFT AS FOUND () FOUND & TAGGED () REESTABLISHED OBLITERATED CORNER ()
REBUILT ()

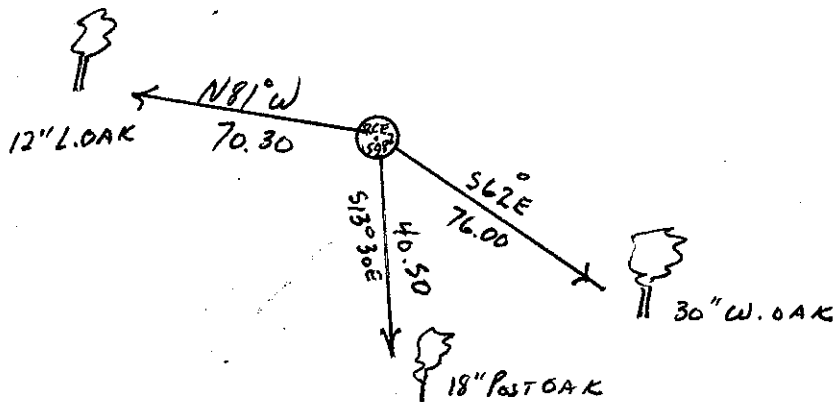
PHYSICAL DESCRIPTION OF CORNER FOUND: EVIDENCE & METHOD USED TO IDENTIFY OR REESTABLISH:

FND. 1" I.P. IN ROCK MOUND STAMPED R.C.E. 5982

PHYSICAL DESCRIPTION OF MONUMENTS REBUILT OR PERPETUATED:

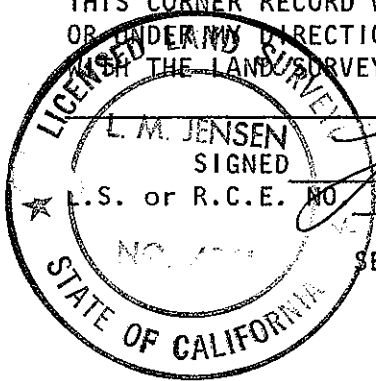
CALIFORNIA COORDINATE SYSTEM ORDER: FIRST () SECOND () THIRD ()
STATIONS USED: NOS (USC & GS) () STATE () COUNTY () OTHER () STATION _____
STATION _____ ZONE _____ ELEVATION _____ NORTHINGS (Y) _____
EASTINGS (X) _____

SKETCH: (INCLUDE REFERENCE TIE OR WITNESS POINTS, REMARKS AND TOPO OF AREA)



SURVEYOR'S CERTIFICATE

THIS CORNER RECORD WAS PREPARED BY ME OR UNDER MY DIRECTION IN CONFORMANCE WITH THE LAND SURVEYORS ACT ON



L. M. JENSEN
SIGNED

[Handwritten signature]
L.S. #261

19 76

COUNTY SURVEYOR'S CERTIFICATE

THE CORNER RECORD WAS RECEIVED 11-24-76 AND EXAMINED AND FILED Nov. 24 1976

BY: A. Grote
TITLE: County Engineer

DOCUMENT NO. 76-34-02
STATEMENT ON BACK OF SHEET
YES () NO ()