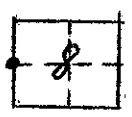


CORNER RECORD

COUNTY OF MADERA T. 85 R. 21E M.D.B. & MERIDIAN CALIF.

CORNER TYPE: GOV'T. CORNER () MEANDER () RANCHO () CONTROL (x) OTHER ()

CORNER IDENTIFICATION --- DATE OF VISIT August 8, 1976



WEST 1/4 COR. Sec. 8/8/71

CORNER -- LEFT AS FOUND (x) FOUND & TAGGED () REESTABLISHED OBLITERATED CORNER ()
REBUILT ()

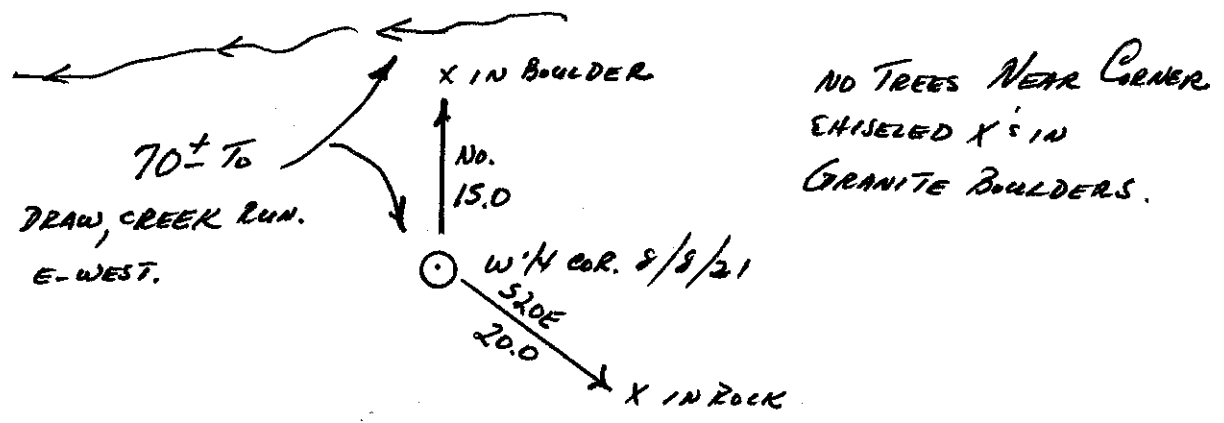
PHYSICAL DESCRIPTION OF CORNER FOUND: EVIDENCE & METHOD USED TO IDENTIFY OR REESTABLISH: FND. 1" I.P. TAGGED L.S. 2229 FOR W1/4 COR. Sec. 8/8/71
LEFT AS FOUND.

PHYSICAL DESCRIPTION OF MONUMENTS REBUILT OR PERPETUATED:

(NOT APP.)

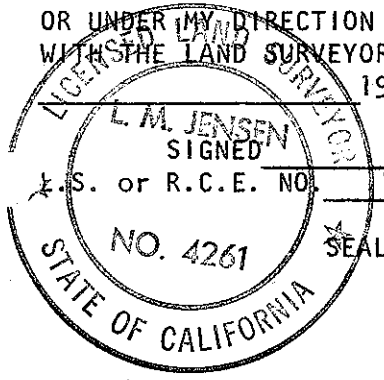
CALIFORNIA COORDINATE SYSTEM ORDER: FIRST () SECOND () THIRD ()
STATIONS USED: NOS (USC & GS) () STATE () COUNTY () OTHER () STATION _____
STATION _____ ZONE _____ ELEVATION _____ NORTHINGS (Y) _____
EASTINGS (X) _____

SKETCH: (INCLUDE REFERENCE TIE OR WITNESS POINTS, REMARKS AND TOPO OF AREA)



SURVEYOR'S CERTIFICATE

THIS CORNER RECORD WAS PREPARED BY ME OR UNDER MY DIRECTION IN CONFORMANCE WITH THE LAND SURVEYORS ACT ON 14 Aug. 1976



SIGNED L.M. Jensen
L.S. or R.C.E. NO. L-5.4261

COUNTY SURVEYOR'S CERTIFICATE

THE CORNER RECORD WAS RECEIVED 8-19-76 AND
EXAMINED AND FILED 8-19-76

BY: A. Grote
TITLE: County Engineer

DOCUMENT NO. 76-24-1
STATEMENT ON BACK OF SHEET
YES () NO (x)