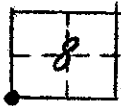


CORNER RECORD

COUNTY OF MADERA T. 85 R. T1E. M.D.B. 4 MERIDIAN CALIF.

CORNER TYPE: GOV'T. CORNER ( ) MEANDER ( ) RANCHO ( ) CONTROL () OTHER ( )

CORNER IDENTIFICATION --- DATE OF VISIT August 3, 19 76



S.W. CORNER SEC. 8/8/41

1" I.P. TAGGED R.C.E. 5982 NEAR FENCE INTERSECTION.

CORNER -- LEFT AS FOUND () FOUND & TAGGED ( ) REESTABLISHED OBLITERATED CORNER ( )  
REBUILT ( )

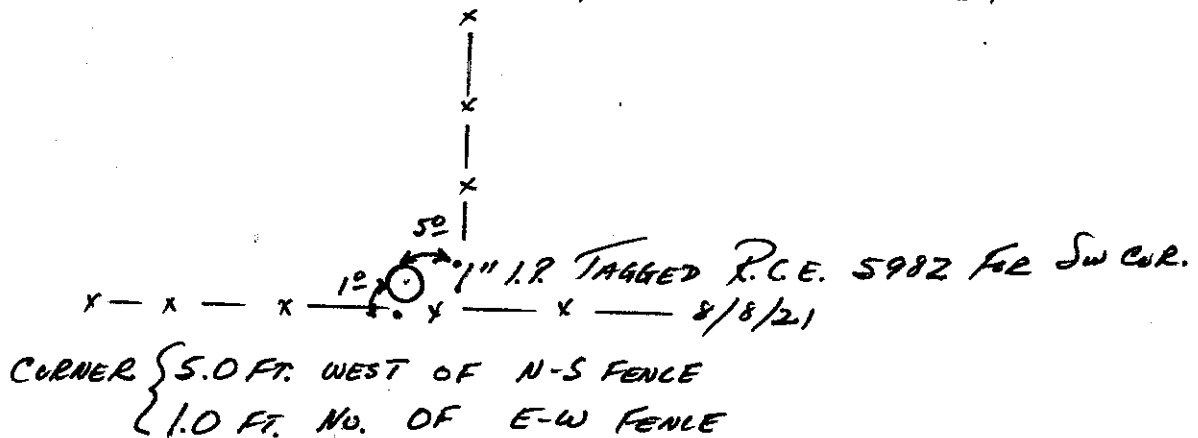
PHYSICAL DESCRIPTION OF CORNER FOUND: EVIDENCE & METHOD USED TO IDENTIFY OR REESTABLISH:  
1" I.P. TAGGED. R.C.E. 5982 NEAR FENCE INTERSECTIONS.  
SEE SKETCH BELOW.

PHYSICAL DESCRIPTION OF MONUMENTS REBUILT OR PERPETUATED:

(NOT APP.)

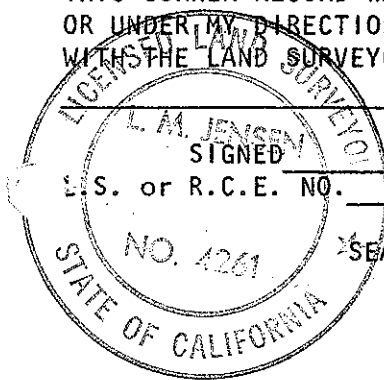
CALIFORNIA COORDINATE SYSTEM ORDER: FIRST ( ) SECOND ( ) THIRD ( )  
STATIONS USED: NOS (USC & GS) ( ) STATE ( ) COUNTY ( ) OTHER ( ) STATION \_\_\_\_\_  
STATION \_\_\_\_\_ ZONE \_\_\_\_\_ ELEVATION \_\_\_\_\_ NORTHINGS (Y) \_\_\_\_\_  
EASTINGS (X) \_\_\_\_\_

SKETCH: (INCLUDE REFERENCE TIE OR WITNESS POINTS, REMARKS AND TOPO OF AREA)



SURVEYOR'S CERTIFICATE

THIS CORNER RECORD WAS PREPARED BY ME OR UNDER MY DIRECTION IN CONFORMANCE WITH THE LAND SURVEYORS ACT ON 14 Aug. 19 76



L. M. Jensen  
S. or R.C.E. NO. L.S. 4261

COUNTY SURVEYOR'S CERTIFICATE

THE CORNER RECORD WAS RECEIVED 8-19-76 AND EXAMINED AND FILED 8-19-1976

BY: A. Grote  
TITLE: County Engineer

DOCUMENT NO. 76-24-2  
STATEMENT ON BACK OF SHEET  
YES ( ) NO ()