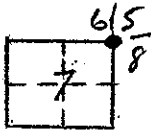


CORNER RECORD

COUNTY OF MADERA T. 85 R. 21E MERIDIAN CALIF.

CORNER TYPE: GOV'T. CORNER ( ) MEANDER ( ) RANCHO ( ) CONTROL ( ) OTHER (  )

CORNER IDENTIFICATION --- DATE OF VISIT 20 FEB. 19 77



NE Sec. Cor. Sec 7 18/21  
FND. 1" I.P. TAGGED L.S. 4261

CORNER -- LEFT AS FOUND (  ) FOUND & TAGGED (  ) REESTABLISHED ( ) OBLITERATED CORNER ( )  
REBUILT ( )

PHYSICAL DESCRIPTION OF CORNER FOUND: EVIDENCE & METHOD USED TO IDENTIFY OR REESTABLISH:

FND. 1" I.P. IN ROCK MOUND FOR SEC. CORNERS 5-6-7-8 8/71  
TAGGED L.S. 4261

PHYSICAL DESCRIPTION OF MONUMENTS REBUILT OR PERPETUATED:

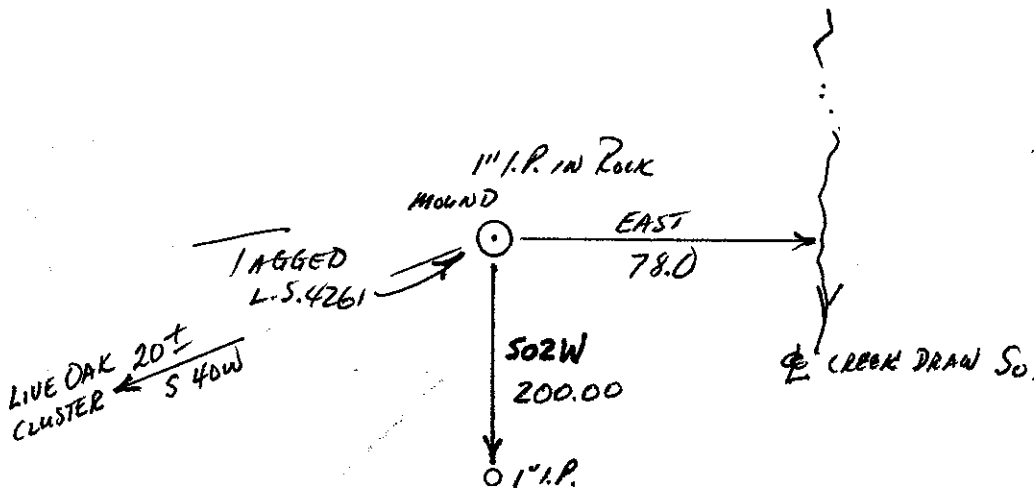
CALIFORNIA COORDINATE SYSTEM ORDER: FIRST ( ) SECOND ( ) THIRD ( )

STATIONS USED: NOS (USC & GS) ( ) STATE ( ) COUNTY ( ) OTHER ( ) STATION \_\_\_\_\_

STATION \_\_\_\_\_ ZONE \_\_\_\_\_ ELEVATION \_\_\_\_\_ NORTHINGS (Y) \_\_\_\_\_

EASTINGS (X) \_\_\_\_\_

SKETCH: (INCLUDE REFERENCE TIE OR WITNESS POINTS, REMARKS AND TOPO OF AREA)



**SURVEYOR'S CERTIFICATE**  
THIS CORNER RECORD WAS PREPARED BY ME OR UNDER MY DIRECTION IN CONFORMANCE WITH THE LAND SURVEYORS ACT ON 20 FEB. 19 77  
SIGNED [Signature]  
S. NO. 4261 NO. L.S. 4261  
SEAL

**COUNTY SURVEYOR'S CERTIFICATE**  
THE CORNER RECORD WAS RECEIVED 3-9-77 AND EXAMINED AND FILED mar 10 1977  
BY: A. Grote  
TITLE: County Engineer  
DOCUMENT NO. 77-04-02  
STATEMENT ON BACK OF SHEET  
YES ( ) NO (  )