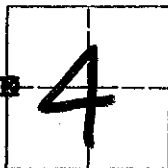


CORNER RECORD

COUNTY OF MADERA TOWNSHIP **8** SOUTH, RANGE **21** EAST, M.D.B.&M. CALIFORNIA

CORNER TYPE: GOV'T. CORNER MEANDER RANCHO CONTROL OTHER

CORNER IDENTIFICATION - DATE OF VISIT: JUNE 28 1952



WEST $\frac{1}{4}$ CORNER OF SECTION 4, 8/21.

CORNER - LEFT AS FOUND FOUND AND TAGGED REESTABLISHED OBLITERATED CORNER REBUILT

PHYSICAL DESCRIPTION OF CORNER FOUND; EVIDENCE AND METHOD USED TO IDENTIFY OR REESTABLISH

1" Pipe, 4" up.

PHYSICAL DESCRIPTION OF MONUMENTS REBUILT OR PERPETUATED

(RE-SET WITH $\frac{1}{2}$ " RE-BAR, IN RK.M.D., LS 4837 - COPIED FROM PM 2510)

CALIFORNIA COORDINATE SYSTEM ORDER: FIRST SECOND THIRD

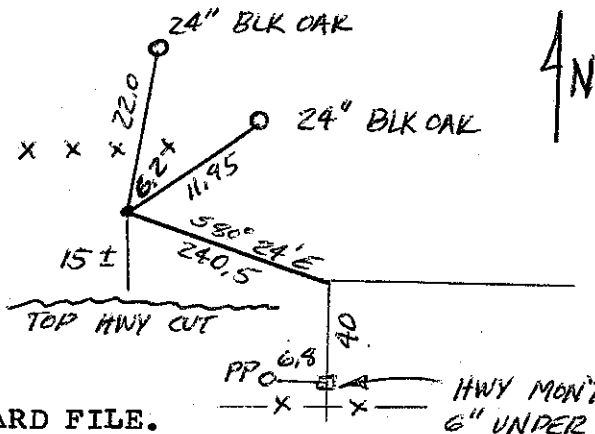
STATIONS USED: NGS (USC & GS) STATE COUNTY OTHER STATION _____ STATION _____

ZONE _____ ELEVATION _____ NORTHINGS (Y) _____ EASTINGS (X) _____

SKETCH: (INCLUDE REFERENCE TIE OR WITNESS POINTS, REMARKS AND TOPO OF AREA)

TIES

- 22.0 feet NNE to O on West side of a 24" Black Oak.
- 6.2 feet NNE to fence post.
- 11.95 feet NE to O in 24" Black Oak.
- 240.5 feet S 80°24'E to
- 15 +/- feet South to top of Highway Cut (HWY 41)



Copied from old CARD FILE.

FB 1000 p2

SURVEYOR'S CERTIFICATE

THIS CORNER RECORD WAS PREPARED BY ME OR UNDER MY DIRECTION IN CONFORMANCE WITH THE LAND SURVEYOR'S ACT ON _____ 19____.

SIGNED: _____

L.S. or R.C.E. No: _____

SEAL

COUNTY SURVEYOR'S CERTIFICATE

THE CORNER RECORD WAS RECEIVED _____ 19____

AND EXAMINED AND FILED _____ 19____.

BY: _____

TITLE: _____

DOCUMENT No: _____
STATEMENT ON BACK OF SHEET: YES NO