

CORNER RECORD

County of MADERA T. 8 S. R. 21 E. M.D.B. Meridian California

Corner Type: Govt. Corner  Meander  Rancho  Other

Corner Identification \_\_\_\_\_ Date of Visit SEPT. 19 74



SW COR. SEC. 2

Corner  Left as Found  Found and Tagged  Reestablished  Obliterated Corner  Rebuilt

Physical Description of Corner Found; Evidence and Method used to Identify or reestablish  
FND. ROCK MND. AT OLD FENCE INTERSECTION

Physical Description of Monuments Rebuilt or Perpetuated  
SET 2" I.P. WITH TAG R/L 21650 IN EXIST. RCK. MND - RE-BUILT RCK MND.

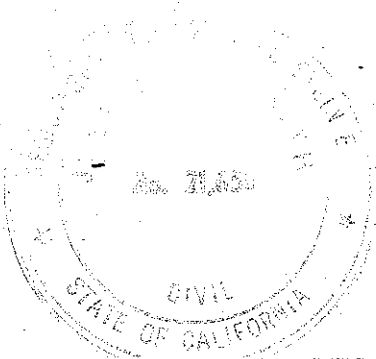
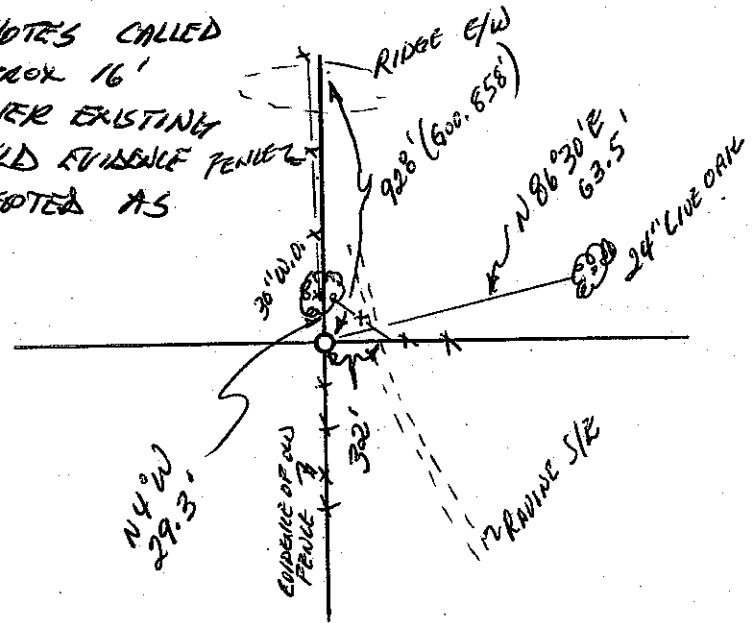
California Coordinate System Order: First  Second  Third

Stations used: NOS (USC & GS)  State  County  Other  Station \_\_\_\_\_ Station \_\_\_\_\_

Zone \_\_\_\_\_ Elevation \_\_\_\_\_ Northings (Y) \_\_\_\_\_ Eastings (X) \_\_\_\_\_

SKETCH: (Include reference tie or witness points, remarks and topo of area)

ORIGINAL GOVERNMENT NOTES CALLED FOR CORNER TO BE APPROX 16' EAST OF RAVINE - HOWEVER EXISTING FENCES AND OTHER FIELD EVIDENCE INDICATED CORNER ACCEPTED AS SHOWN.



SURVEYOR'S CERTIFICATE

This corner record was prepared by me or under my direction in conformance with the Land Surveyors Act on Sept 19 74.

Signed: Joseph C. Smyth R/C 21650

COUNTY SURVEYOR'S CERTIFICATE

The Corner Record was received Oct 16 19 74 and examined and filed Oct 23 19 74.

By: Albert O. Brote  
 Title: County Engineer

Document No. 74-23-3