

CORNER RECORD

County of MADERA T. 8 S., R. 21 E. M.D.B. 9 Meridian California

Corner Type: Govt. Corner Meander Rancho Other

Corner Identification _____ Date of Visit SEPT. 19 74



SE COR. SEC. 2

Corner Left as Found Found and Tagged Reestablished Obliterated Corner Rebuilt

Physical Description of Corner Found; Evidence and Method used to Identify or reestablish
FIND. DRIG. WITNESS TREE 36" W.D.
ALSO CHECKED TERRAIN CALLS FROM DRIG. GOV. NOTES

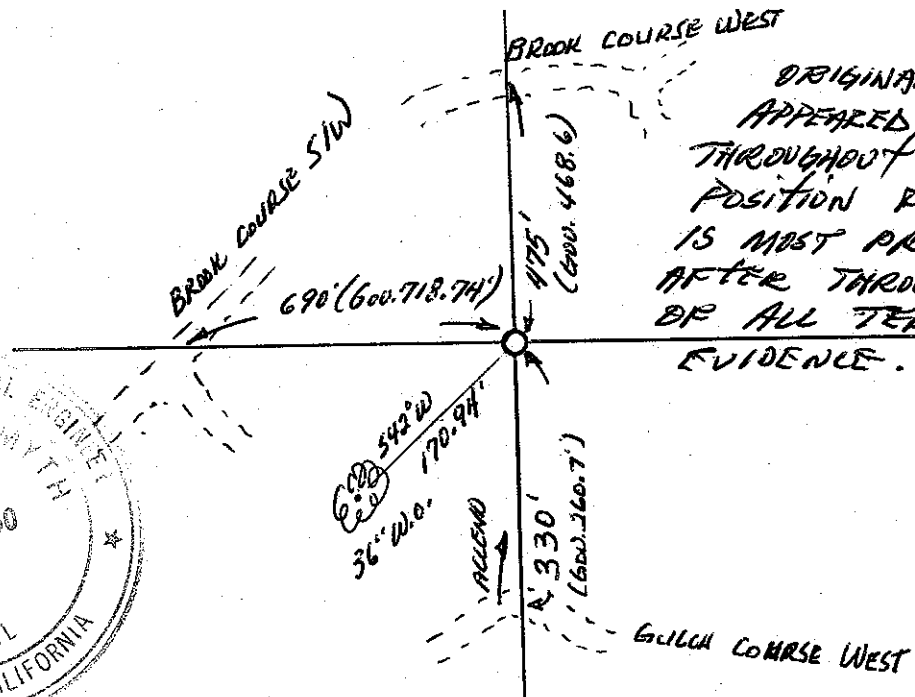
Physical Description of Monuments Rebuilt or Perpetuated
SET 2" I.P. WITH TAG RCE 21650 UP 6"

California Coordinate System Order: First Second Third

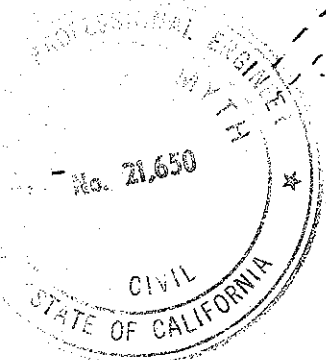
Stations used: NOS (USC & GS) State County Other Station _____ Station _____

Zone _____ Elevation _____ Northings (Y) _____ Eastings (X) _____

SKETCH: (Include reference tie or witness points, remarks and topo of area)



ORIGINAL GOVERNMENT DISTANCES
 APPEARED GROSSLY IN ERROR
 THROUGHOUT THIS SECTION -
 POSITION FOR CORNER AS SHOWN
 IS MOST PROBABLE LOCATION
 AFTER THROUGH EXAMINATION
 OF ALL TERRAIN CALLS IN
 EVIDENCE.



SURVEYOR'S CERTIFICATE

This corner record was prepared by me or under my direction in conformance with the Land Surveyors Act on SEPT 19 74.

Signed: Joseph C. Smith
 L.S. & C.E. No. RCE 21650

COUNTY SURVEYOR'S CERTIFICATE

The Corner Record was received of 16 19 74 and examined and filed Oct. 23 19 74.

By: Albert O. Grote
 Title County Engineer

Document No. _____