

# CORNER RECORD

Document Number \_\_\_\_\_

City of UNINCORPORATED

County of MADERA, California

Brief Legal Description LOT 945 OF YOSEMITE LAKES PARK RECORDED IN BOOK 16 OF MAPS PAGES 37-70 M.C.R

34	
T.8S.,	R.20E.
X	
T.9S.,	R.20E.
3	

### CORNER TYPE

Government Corner  Control   
 Meander  Property   
 Rancho  Other

Date of Survey FEBRUARY 3, 2016

### COORDINATES(Optional)

N. \_\_\_\_\_  
 E. \_\_\_\_\_  
 Zone \_\_\_\_\_ NAD27  NAD83   
 NAD83 Epoch \_\_\_\_\_  
 Elev. \_\_\_\_\_  
 Vert. Datum: NGVD29  NADV88   
 Meas. Units: Metric  Imperial

Corner - Left as found  Found and tagged  Established  Reestablished  Rebuilt

Identification and type of corner found: Evidence used to identify or procedure used to establish or reestablish the corner:

FOUND CORNERS AT RECORD POSITION AS SHOWN ON SHEET 2

A description of the physical condition of the monument as found and as set or reset: \_\_\_\_\_

RE-ESTABLISHED CORNERS AT RECORD POSITION AS SHOWN ON SHEET 2

### SURVEYOR'S STATEMENT

This Corner Record was prepared by me or under my direction in conformance with the Land Surveyor's Act on FEBRUARY 11, 2016.

Signed [Signature] P.L.S. or R.C.E. No.: PLS 8393



### COUNTY SURVEYOR'S STATEMENT

This Corner Record was received February 22, 2016 and examined and filed February 24, 2016.

Signed [Signature] P.L.S. or R.C.E. No.: LS 6968

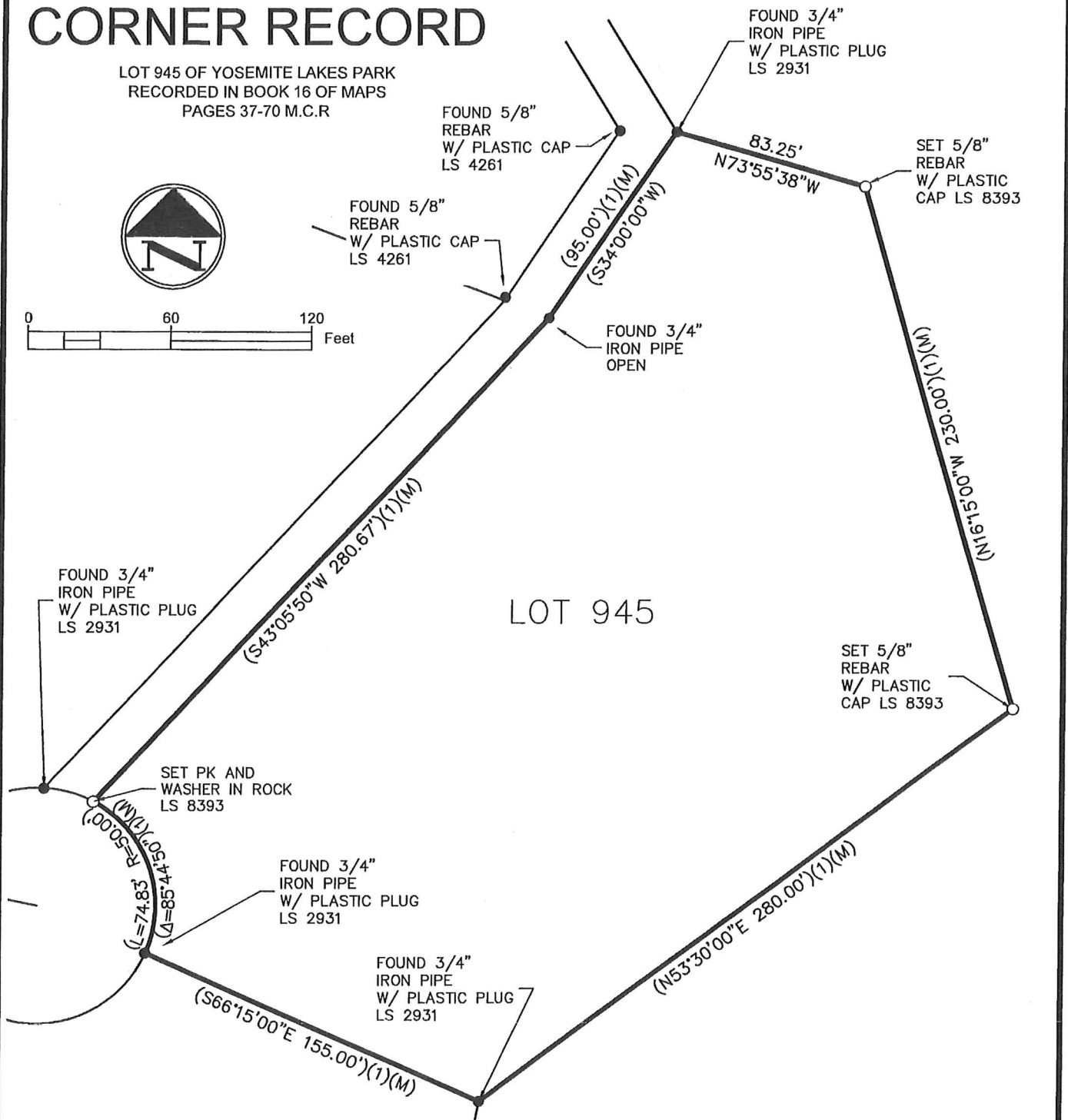
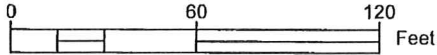
Title Acting County Surveyor

County Surveyor's Comment \_\_\_\_\_



# CORNER RECORD

LOT 945 OF YOSEMITE LAKES PARK  
RECORDED IN BOOK 16 OF MAPS  
PAGES 37-70 M.C.R



## LEGEND

- FOUND SURVEY MONUMENT (AS NOTED)
- SET SURVEY MONUMENT (AS NOTED)
- DIMENSION POINT (NOTHING FOUND OR SET)
- PROPERTY LINE
- - - ADJOINING PROPERTY LINE
- (...)(1) DATA PER BK. 16, PG. 37-70, M.C.R.
- (M) MEASURED
- (R) RADIAL LINE

JONES SNYDER & ASSOCIATES  
P.O. BOX 2292, OAKHURST, CA 93644  
(559)683-7661 WWW.JSSURVEYING.COM

DATE: 02/11/16 DWG FILE: 16-065cr.dwg  
JOB NO: 16-065 DRAWN BY: NAV