

CORNER RECORD

County of MADERA T. 8 S. R. 21 E. M.P.A. 1 Meridian California

Corner Type: Govt. Corner Meander Rancho Other

Corner Identification _____ Date of Visit SEPT. 19 74



5 1/4 COR. SEC. 2

Corner _____ Left as Found Found and Tagged Reestablished Obliterated Corner Rebuilt

Physical Description of Corner Found; Evidence and Method used to Identify or reestablish

FND. NO EVIDENCE OF COR. OR WITNESS TREES
SET COR. BY SINGLE PROPORTIONMENT PER ORIG. GOV. NOTES

Physical Description of Monuments Rebuilt or Perpetuated

SET 1" I.P. WITH TAG RCE 21650 UP 4"

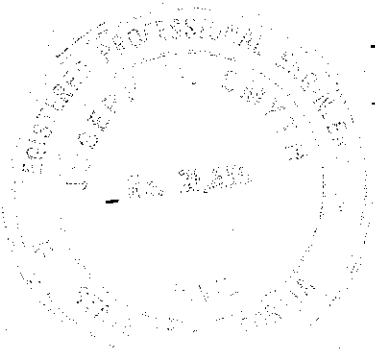
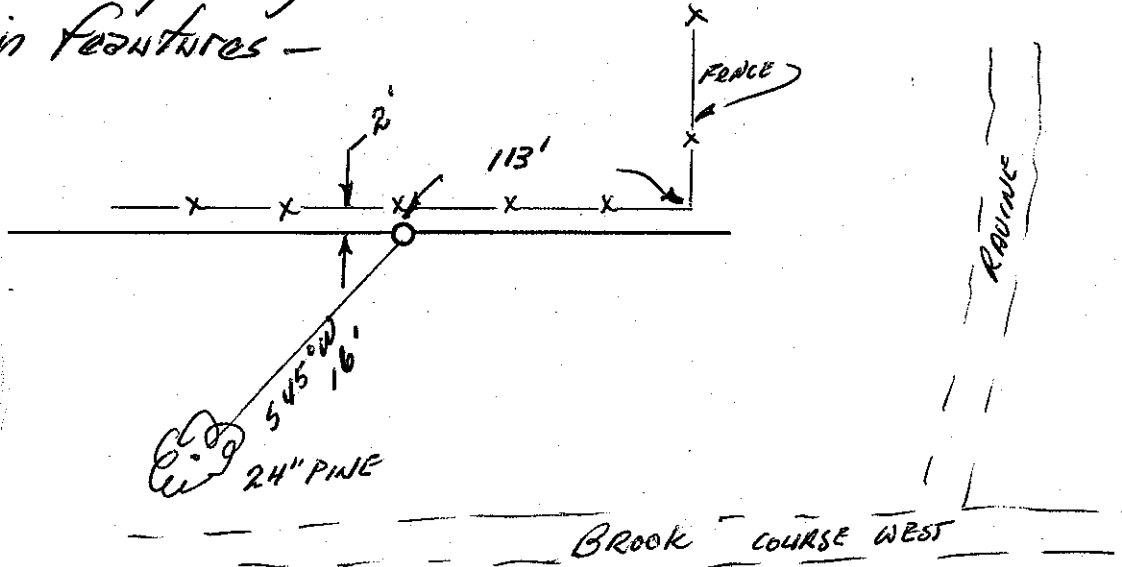
California Coordinate System Order: First Second Third

Stations used: NOS (USC & GS) State County Other Station _____ Station _____

Zone _____ Elevation _____ Northings (Y) _____ Eastings (X) _____

SKETCH: (Include reference tie or witness points, remarks and topo of area)

Proportionment location of this corner fit closely with the original government calls to terrain features -



SURVEYOR'S CERTIFICATE

This corner record was prepared by me or under my direction in conformance with the Land Surveyors Act on SEPT 19 74.

Signed: Joseph C. Smith RCE 21650

L.S. No. _____ R.C.E. No. _____

COUNTY SURVEYOR'S CERTIFICATE

The Corner Record was received Oct. 16 19 74 and examined and filed Oct. 23 19 74.

By: Albert O. Grote
Title County Engineer

Document No. 74-23-4