

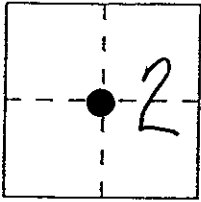
CORNER RECORD

Document Number _____

City of _____

County of MADERA, California

Brief Legal Description C 1/4 COR. SEC 2 T8S R21E



CORNER TYPE

- Government Corner Control
 Meander Property
 Rancho Other
 Date of Survey _____

COORDINATES (Optional)

N. _____
 E. _____
 Zone _____ Datum _____
 Elev. _____

Corner — Left as found Found and tagged Established Reestablished Rebuilt

Identification and type of corner found: Evidence used to identify or procedure used to establish or reestablish the corner:

C 1/4 CORNER SECTION 2 8/21

SET 5/8" REBAR, 30" LONG WITH PLASTIC CAP, UP 6".

TIES:

1. A LIVE OAK, 6" DIA., BEARS N 19°E, 13.11' - 1 BLAZED.
 2. A CHISELED CROSS IN A ROCK 1' DIA. X 1/2' HIGH BEARS S 79°E, 13.77'
 3. A NAIL AND TAG, LS 5509 IN THE BASE OF A LARGE FORKED LIVE OAK, BEARS S 78°W, 3.31'.
- DISTANCES ARE HORIZONTAL TO NAILS & TAGS, LS 5509 IN SIDE-CENTER OF TREES.

COPIED FROM
RS 98/45-46

SURVEYOR'S STATEMENT

This Corner Record was prepared by me or under my direction in conformance with the Land Surveyors' Act on _____ 19 ____.

Signed _____ L.S. or R.C.E. Number _____

COUNTY SURVEYOR'S STATEMENT

This Corner Record was received _____ 19 ____ and examined and filed _____ 19 ____.

Signed _____ Title _____

County Surveyor's Comment _____