

# CORNER RECORD

COUNTY OF Madera T. 8 S R. 20 E Mt. Diablo MERIDIAN CALIFORNIA.  
 CORNER TYPE: GOV'T. CORNER  MEANDER  RANCHO  CONTROL  OTHER   
 CORNER IDENTIFICATION — DATE OF VISIT 4 Sep. 19 74

36

CORNER — LEFT AS FOUND  FOUND AND TAGGED  REESTABLISHED OBLITERATED CORNER  REBUILT

PHYSICAL DESCRIPTION OF CORNER FOUND; EVIDENCE AND METHOD USED TO IDENTIFY OR REESTABLISH

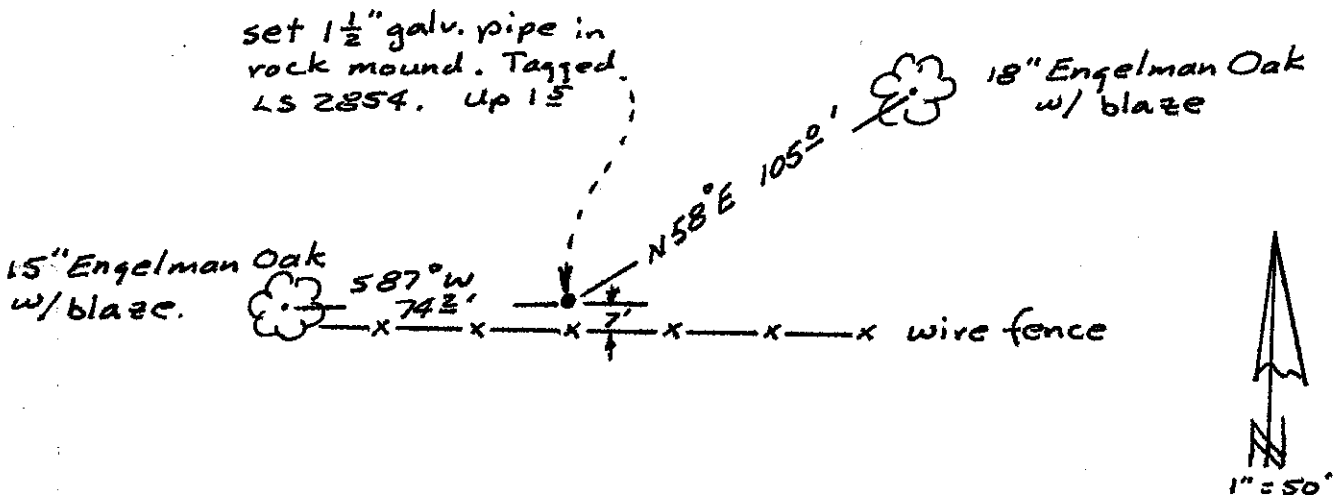
Found Rock Mound w/Ties to two bearing trees & fence per Madera Co. F.B. 200, pg. 65 dated 14 Feb 53. Ties were checked & found to be acceptable.

PHYSICAL DESCRIPTION OF MONUMENTS REBUILT OR PERPETUATED

Set 1 1/2" Galvanized Iron Pipe in center of existing rock mound. Up 1.5' w/ LS tag 2854

CALIFORNIA COORDINATE SYSTEM ORDER: FIRST  SECOND  THIRD   
 STATIONS USED: NGS (USC & GS)  STATE  COUNTY  OTHER  STATION \_\_\_\_\_ STATION \_\_\_\_\_  
 ZONE \_\_\_\_\_ ELEVATION \_\_\_\_\_ NORTHINGS (Y) \_\_\_\_\_ EASTINGS (X) \_\_\_\_\_

SKETCH: (Include reference tie or witness points, remarks and topo of area)



**SURVEYOR'S CERTIFICATE**

CORNER RECORD WAS PREPARED BY ME OR UNDER MY DIRECTION IN CONFORMANCE WITH THE LAND SURVEYORS ACT ON Sept 16 19 74

SIGNED: [Signature]

L.S. or R.C.E. No.: 2854

SEAL

**COUNTY SURVEYOR'S CERTIFICATE**

THE CORNER RECORD WAS RECEIVED Oct 14 19 74 AND EXAMINED AND FILED Oct 23 19 74

BY: Albert O. Grote

TITLE: County Engineer

DOCUMENT No. 74-24-44

STATEMENT ON BACK OF SHEET

YES

NO