



DEPARTMENTAL ORGANIZATIONAL CHARTS

The Departmental Organizational Charts contained in this document reflect the 2022-23 Recommended staffing allocations, inclusive of funded and unfunded positions, and are shown by assignment within the functional areas or programs of the department. These charts are intended to only provide an overview of the department and its functions/ programs and how those areas are staffed.

For more information on funded and unfunded positions, please refer to the specific departmental position summary.

Note: Organizational charts are presented in alphabetical order by department.

Board of Supervisors

Coordinate administrative activities and priorities

Coordinate administrative activities and priorities.
Implement Board direction

County Administrative Officer (CAO)

Elected Department Heads

- Sheriff
- District Attorney
- Auditor-Controller
- Assessor
- Treasurer-Tax Collector

County Administration

- Executive Assistant to the CAO
- Assistant CAO (New Funded Position)**
- Deputy CAO-Finance
- Deputy CAO-Legal/Risk

Appointed Department Heads

- Appointed Department Heads
- County Counsel

Purchasing, Finance & Special Projects

County Budget, Purchasing, Homelessness, CARES/ARPA, Leasing Program, Strategic Planning

- 1.0 Principal Administrative Analyst
- 1.0 Admin Analyst I/II/Sr.
- 1.0 Sr. Prog. Assistant/WOC as analyst for ARPA
- Current Unfunded:
1.0 Admin Analyst (UNF)
1.0 Office Assistant (UNF)

311 Customer Service Center

- 1.0 Sr. Program Assistant
- 3.0 Program Assistant I/II

Risk Management

- 1.0 Risk Management Analyst

Grant Services

- 1.0 Grant Services Manager

General Services

General Services Division Director

Fleet Services	County Facilities Maintenance	Capital Projects/Capital
Staffing: 1.0 Fleet Services Manager 2.0 Auto Technician 1.0 Parts Assistant 1.0 Sr. Auto Tech 1.0 Program	Staffing: 1.0 Facilities Superintendent 1.0 Program Assistant 1.0 Building Maint. Supervisor 3.0 Sr. Maint Worker 2.0 HVAC Spec. 6.0 Maint Worker 1.0 Sr. Grounds Maint Worker 6.0 Grounds Maint Worker	Staffing: 1.0 Sr. Admin Analyst Kithell CEM Contract

Department of Agriculture

Agricultural Commissioner / Sealer of Weights & Measures

Deputy Agricultural Commissioner/Sealer of Weights & Measures

Consumer Protection Pesticide Use Enforcement

Agricultural Services
Commodity Inspections & Shipments, Crop Report, Apiary

Pest Detection/Exclusion
Insect trapping, Plant inspections

Weights and Measures
Device Inspections, Transaction surveillance

Staffing
Supervising Ag Inspector: 1FTE Ag & Standards Inspector: 5 FTE
Program Asst. II: 1FTE

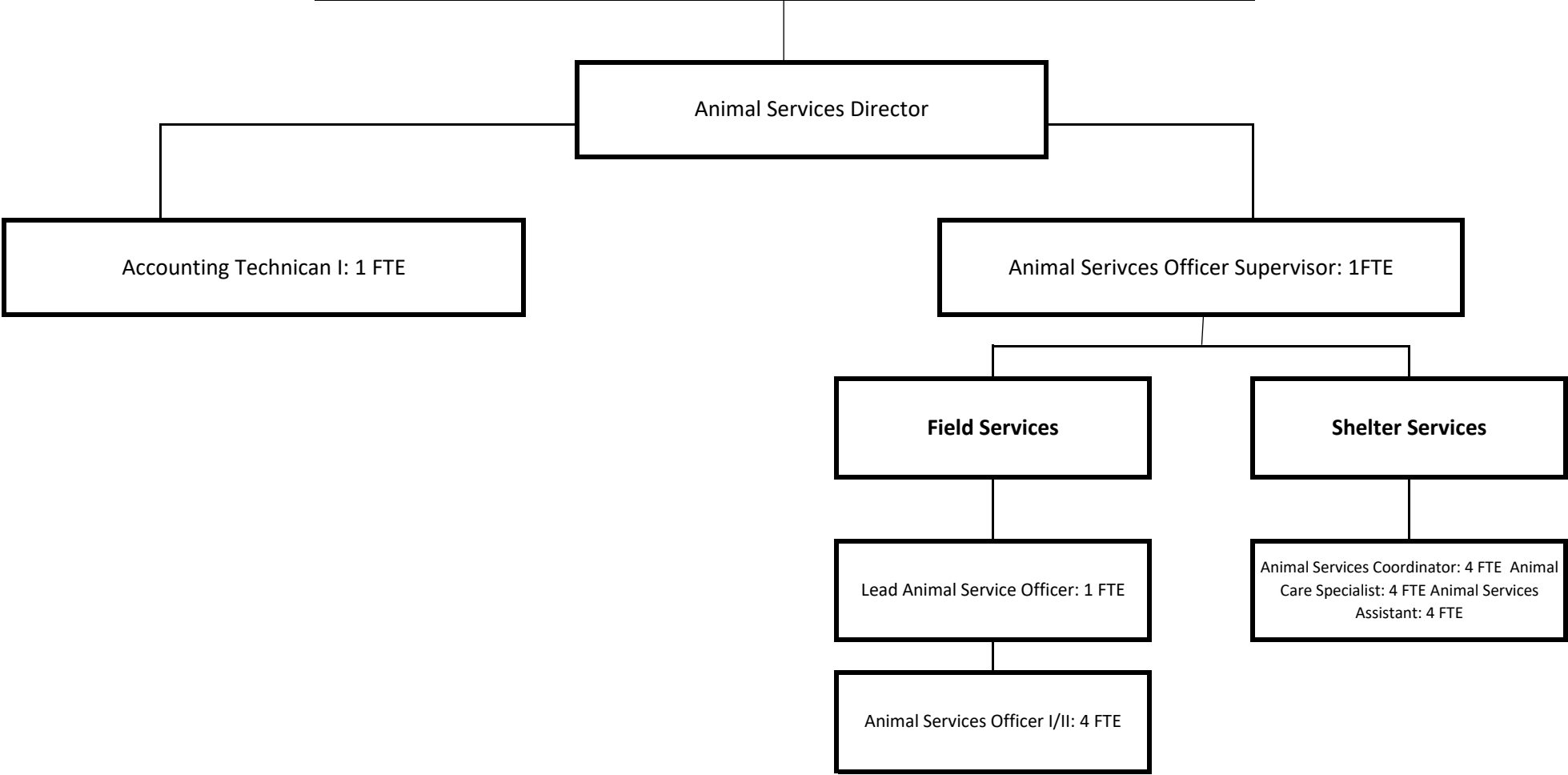
Staffing
Ag & Standards Inspector: 2FTE
Admin. Analyst II: 1FTE

Staffing
Ag & Standards Inspector: 3 FTE

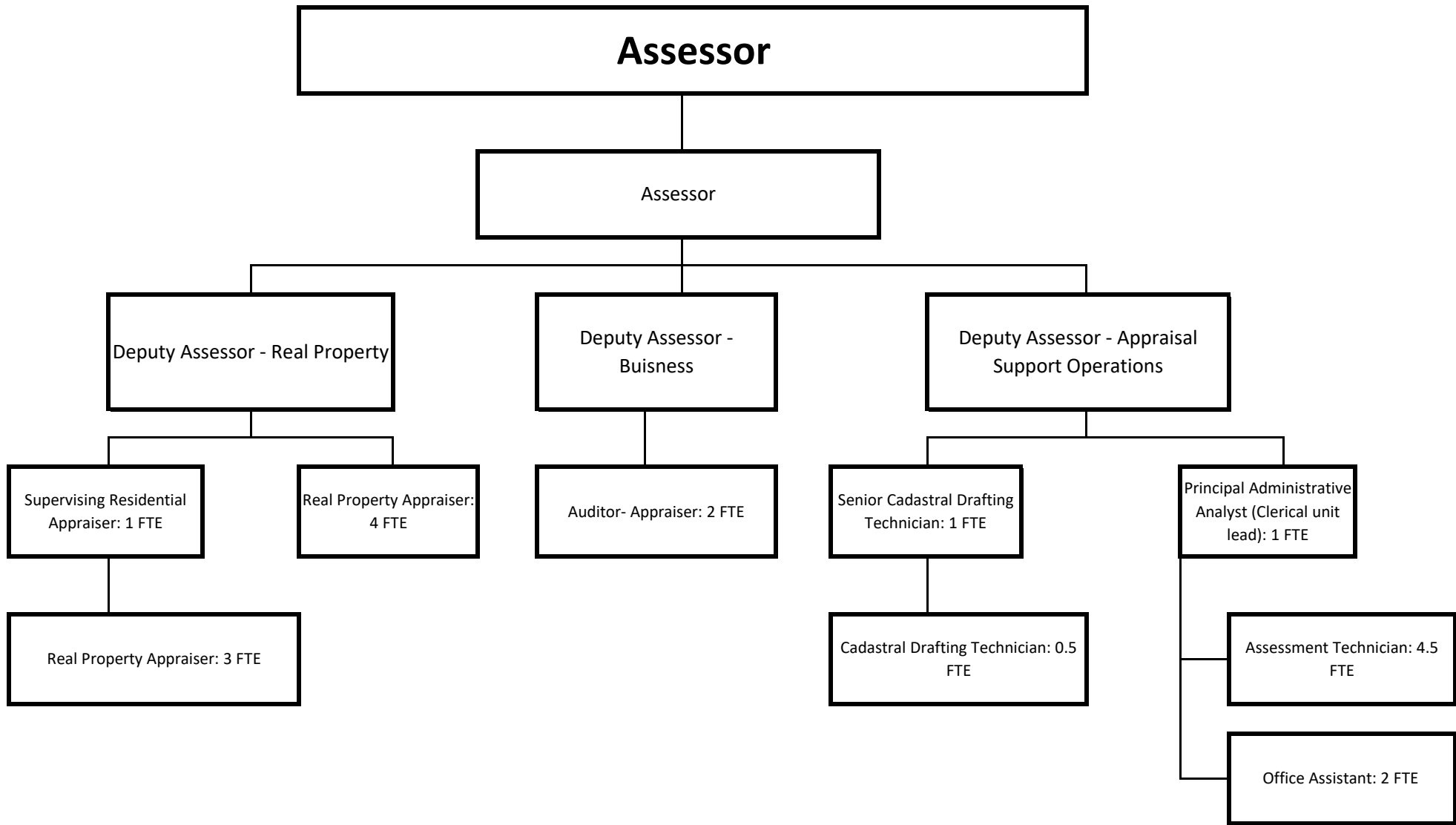
Staffing
Supervising Ag Inspector: 1FTE
Ag Technician: 1FTE
Program Assistant I: 1FTE

Total FTE: 18.0

Animal Services

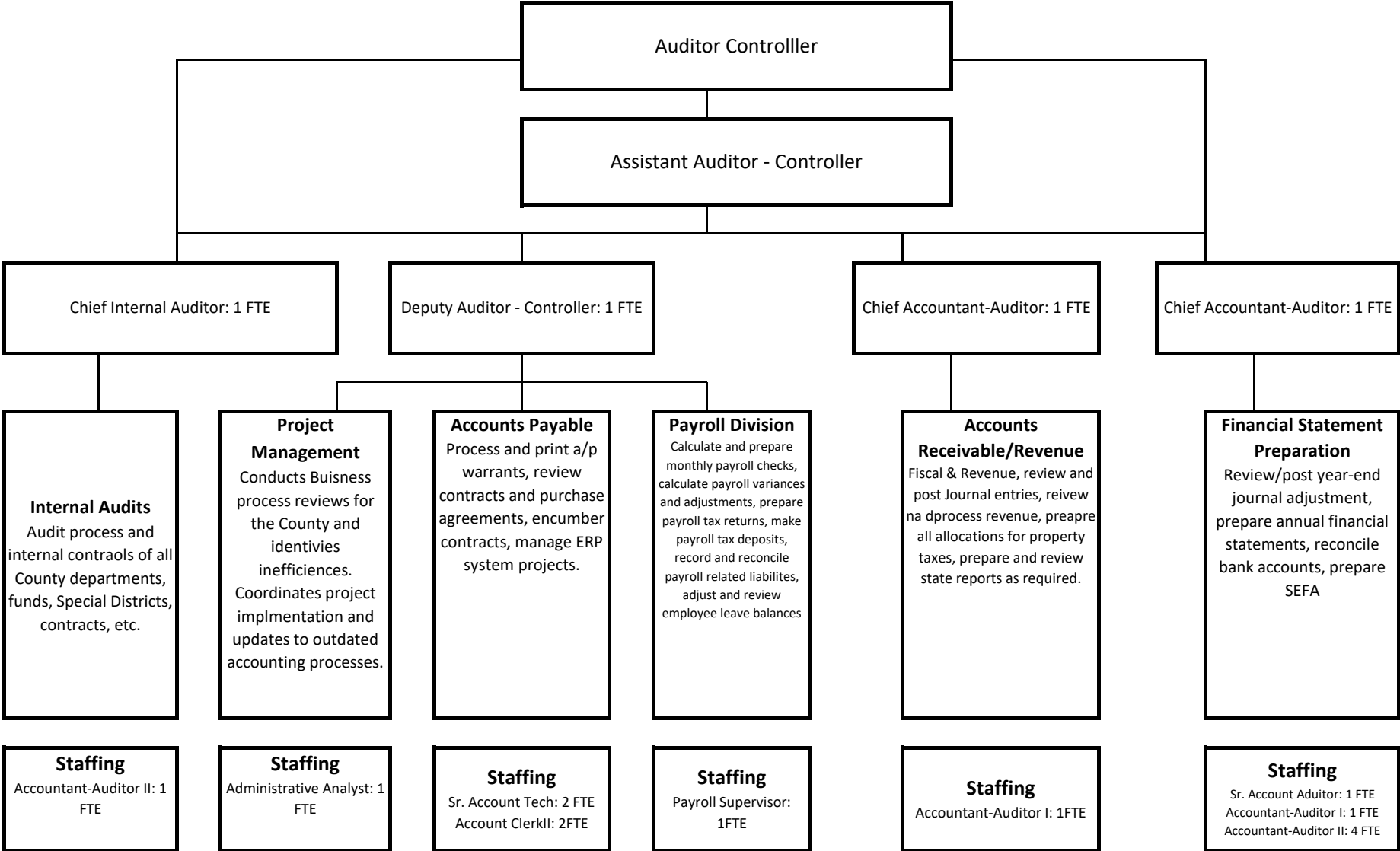


Total FTE: 13.0



Total FTE: 24.0

Auditor - Controller Department



Total FTE: 24.00

Total FTE: 24.0

BEHAVIORAL HEALTH SERVICES DEPARTMENT

Director of Behavioral Health Services 1.0 FTE

Exec Asst to Department Head 1.0 FTE

Compliance Officer/Prgm Mgr 1.0 FTE

Medical Director 0.5 FTE
Nurse Practitioner 1.0 FTE
Registered Nurse I/II or LVN 4.0 FTE
PH Clinical Services Asst 4.0 FTE

Deputy Director - Operations 1.0 FTE
Administrative Assistant 1.0 FTE

Assistant Behavioral Health Services Director 1.0 FTE
Program Assistant 1.0 FTE

Fiscal Manager 1.0 FTE
Budget, Contracts Management,
Purchasing, Accounts Payable, Accounts
Receivable, Payroll, Personnel, IT
Technical Support, Facilities Management,
Transportation Services

BHS Division Manager 1.0 FTE
Quality Management, Regulatory
Compliance, Data Management,
Statistical Analysis/Outcomes, State
Reviews, Clinical Audits, Program
Performance, CalAIM Initiatives

BHS Division Manager 1.0 FTE
Crisis Continuum Services, Access
and Treatment Authorization
Program, Mobile Crisis Services, 988
Call Center, Clinical Administrative
Support,

BHS Division Manager 1.0 FTE
Children System of Care, Partnership
Programs, Madera Region Behavioral
Health Counseling Center

BHS Division Manager 1.0 FTE
Adult System of Care, Pine Recovery
Center, Chowchilla Region Behavioral
Health Counseling Center, MHSA

BHS Division Manager 1.0 FTE
Justice Involved Services, Substance
Abuse Prevention and Treatment
Services, Gambling Addiction, Oakhurst
Region Behavioral Health Counseling
Center

Principal Admin Analyst 1.0 FTE
Senior Admin Analyst 2.0 FTE
Admin Analyst I/II 3.0 FTE
Acct-Auditor I/II or Senior 1.0 FTE
Senior Acctg Tech 2.0 FTE
Accounting Tech I/II 2.0 FTE
Senior Program Assist 1.0 FTE
Central Services Worker 2.0 FTE
Vocational Asst Driver 2.0 FTE

Admin Analyst I/II 5.0 FTE
Administrative Assist I/II 2.0 FTE
Program Asst I/II 3.0 FTE
Office Assist I/II 1.0 FTE

Supv MH Clinician 2.0 FTE
BH Program Supv 1.0 FTE
MH Caseworker I/II 4.0 FTE
Certified A&D Counselor 4.0 FTE
Licensed MH Clinician 3.0 FTE
Prelicensed MH Clinician 7.0 FTE
Ofc Services Supv I/II 1.0 FTE
Program Asst I/II 4.0 FTE
Office Asst II 2.0 FTE
Sr Program Asst I/II 2.0 FTE
Mental Health Aide 2.0 FTE
Vocational Asst Driver 1.0 FTE

Supv MH Clinician 3.0 FTE
Licensed MH Clinician 9.0 FTE
Pre-Licensed MH Clinician 6.0 FTE
Certified A&D Counselor 1.0 FTE
MH Caseworker I/II 7.0 FTE
Administrative Asst 2.0 FTE
Office Assistant/II 2.0 FTE
Mental Health Aide 1.0 FTE
Vocational Asst Driver 1.0 FTE

Supv MH Clinician 2.0 FTE
BH Program Supv 2.0 FTE
Senior MH Caseworker 3.0 FTE
Licensed MH Clinician 4.0 FTE
Prelicensed MH Clinician 10.0 FTE
Certified A&D Counselor 0.5 FTE
Health Educ Coord 1.0 FTE
MH Caseworker I/II 13.0 FTE
Senior Program Asst 2.0 FTE
Mental Health Aide 3.0 FTE
Vocational Asst Driver 2.0 FTE

Supv MH Clinician 1.0 FTE
BH Program Supv 1.0 FTE
Licensed MH Clinician 2.0 FTE
Prelicensed MH Clinician 8.0 FTE
Certified A&D Counselor 9.0 FTE
Comm Health&Well Asst 2.0 FTE
Health Educ Coord 3.0 FTE
MH Caseworker I/II 7.0 FTE
Senior Program Asst I/II 1.0
Mental Health Aide 3.0 FTE
Vocational Asst Driver 1.0 FTE

Total FTE: 194

**Board of Supervisors
5 Supervisorial Districts**

Chief Clerk of the Board

Performs duties specified in the California Government Code, County code and other statutory provisions referencing the duties of the COTB. Performs a variety of responsible and specialized administrative support services for the BOS, including but not limited to maintaining official records of actions and proceedings; Conflict of Interest Codes and State mandated Filing Officer for Statement of Economic Interest (Form 700), Madera County Code and BOS approved contracts; provide administrative support and clerk the Assessment Appeals Board (AAB), Remote Access Network and City Selection Committee; provide administrative support to BOS; assists other departments, entities and public with research and retrieval of information; prepares and monitors BOS budget; updates and maintains official rosters and/or administers Oath of Office of all Boards, Commissions and Committees; provides staff assistance as directed by BOS; organizes and participates in special ceremonies, conferences and events sponsored by the BOS; represents the BOS to the public, County departments, and outside agencies

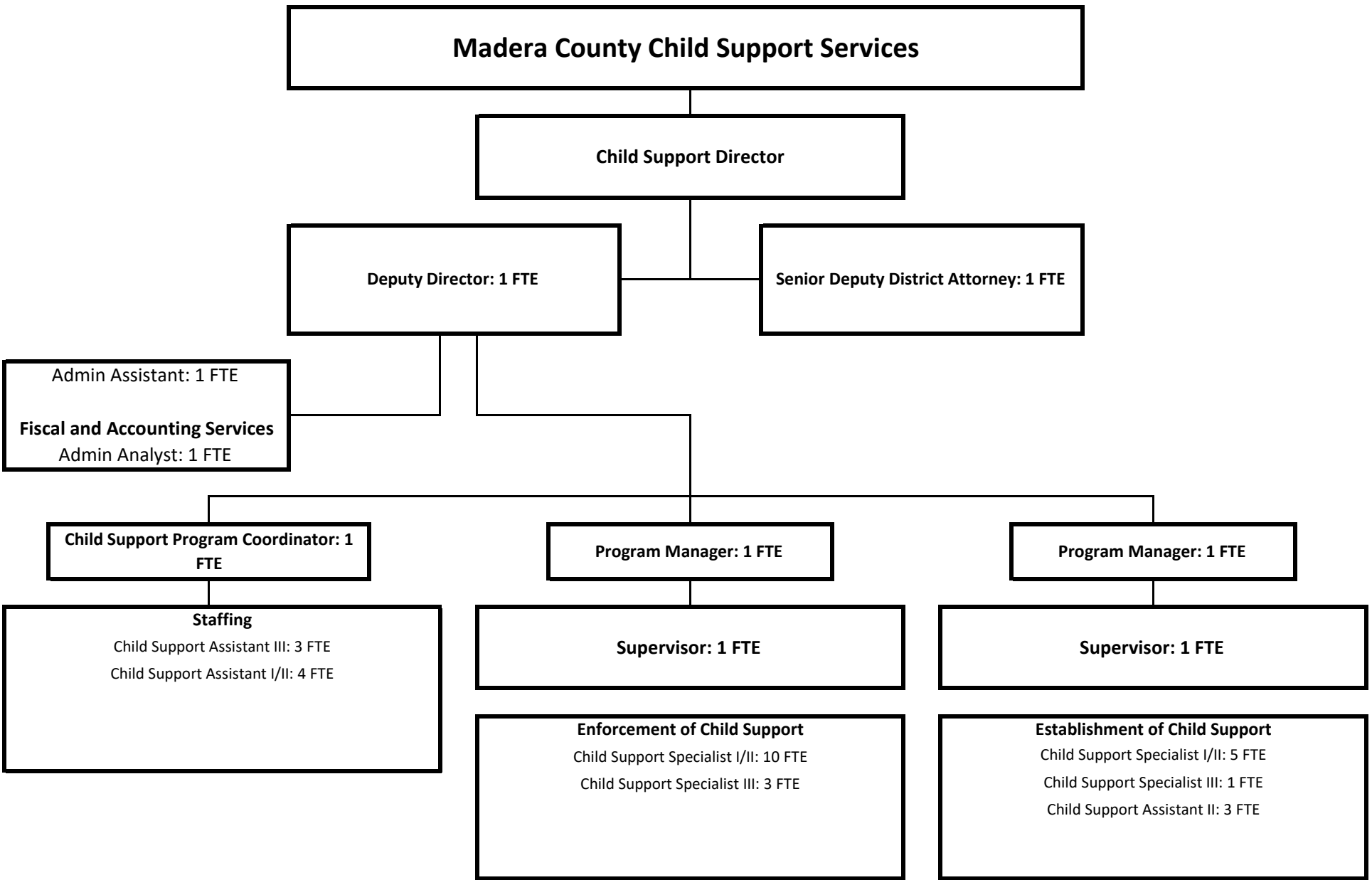
Staffing
Chief Clerk of the Board: 1 FTE
Assistant Clerk of the Board: 1 FTE
Deputy Clerk of the Board I/II: 4 FTE

District Chiefs of Staff

Under direction of a member of the BOS, performs a wide variety of legislative and other specialized research and analysis, analyze problems, identify alternative solutions, project consequences of proposed actions and makes recommendations including, but not limited to proposed legislation, community interests and governmental problems. Serve as a liaison with member constituency, employees, the public and community groups, including but not limited to public speaking, press releases and social media. Organizes and participates in special ceremonies, conferences and events sponsored by the BOS; attends meetings, seminars or conferences and events as a representative of the BOS; represents the BOS to the public, County departments and outside agencies

Staffing
District Chief's of Staff: 5 FTE

Total FTE: 16.0



Total FTE: 39.0

Community and Economic Development

Community and Economic Development Director

**See Environmental Health
Organizational Chart**

Deputy Director

Deputy Director

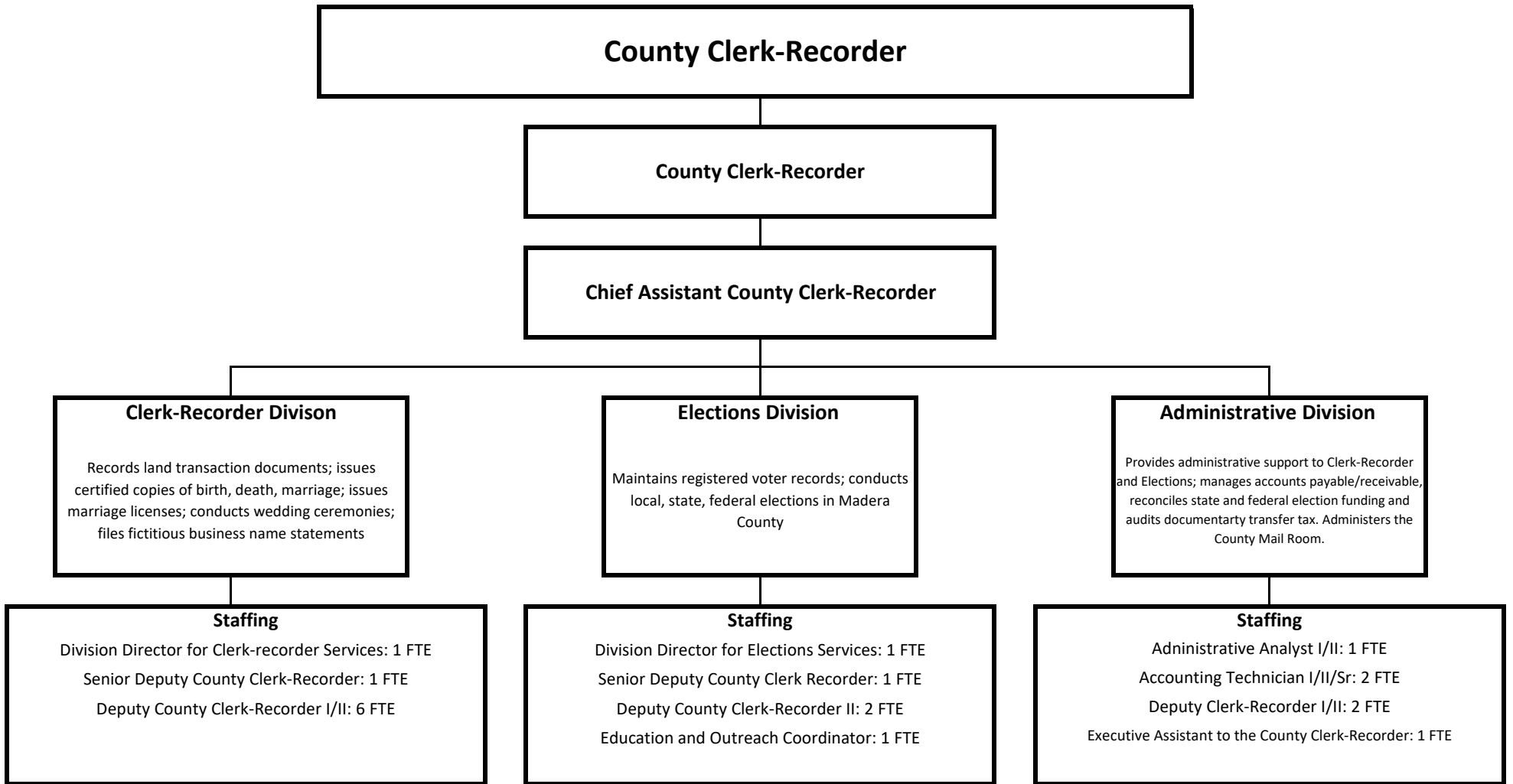
Planning
The Planning Division's responsibility is to promote the most effective, efficient, aesthetic, and safest use of land for present and future generations of Madera County residents and visitors. It is responsible for the preparation and updating of a comprehensive long-term General Plan for the land use and physical development of the County and for the execution of this Plan and for enforcing County Code.

Building & Fire Safety
The Building and Fires Safety Division is responsible for assuring the construction in Madera County adheres to the California Fire Code and California Building Code.

Staffing
Administrative Analyst I/II/Sr: 1 FTE
Executive Assistant to Dept Head: 1 FTE
Code Enforcement Officer I/II: 3 FTE
Supervising Code Enforcement Officer: 1 FTE
Planner I/II: 5 FTE
Senior Planner: 2 FTE
Planning Tech or Planning Aide 1 FTE

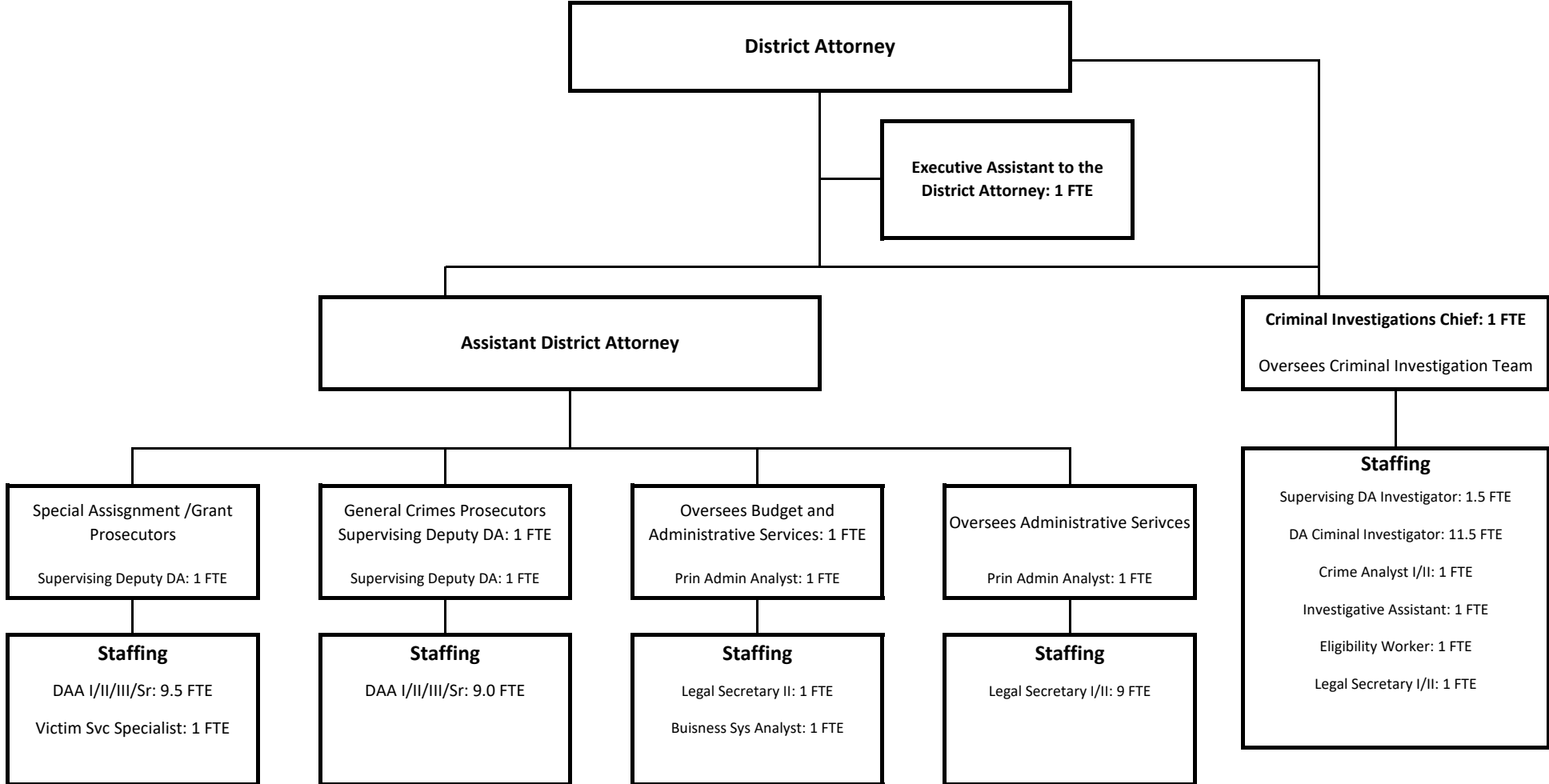
Staffing
Administrative Analyst I/II/Sr: 1 FTE
Account Clerk II: 1 FTE
Building Inspector I/II: 8 FTE
Building Permit Services Manager: 1 FTE
CED Business System Information Analyst I/II/Sr: 1 FTE
Fire Prevention Officer: 3 FTE
Plan Checker: 5 FTE
Permit Technician: 4 FTE
Program Assistant I/II: 2 FTE
Senior Permit Tech: 1 FTE

Total FTE: 44.0



Total FTE: 20.0

Madera County District Attorney's Office



Total FTE: 55.5

Environmental Health

CED Deputy Director, Environmental Health: 1 FTE

Supervising REHS:

**Food Safety,
Recreational Health &
Instiitutional Health**

Regulatory oversight of retail
food facilities, camps, pools

Staffing

Senior REHS: 1 FTE
REHS I/II: 3 FTE

**Water Systems & Well
Permitting**

Regulatory oversight of small
water systems under 200
connections

Staffing

Senior REHS: 1 FTE
REHS I/II: 2 FTE

Permit Tech

EHS: 1 FTE

CUPA

Hazardous Materials,
Hazardous Wastes,
Underground Storage Tanks,
Aboveground Storage Tanks,
etc.

Staffing

Senior REHS: 1 FTE
REHS I/II: 3 FTE

**Medical Waste & Body
Art/Tattoo**

Biohazardous wastes, sharps
wastes, infection control

Staffing

REHS I/II: 1 FTE

**Solid Waste & Onsite
Wastewater**

Landfill, Septic Systems

Staffing

REHS I/II: 1 FTE

Administrative Support

Staffing

Administrative Assistant: 1 FTE

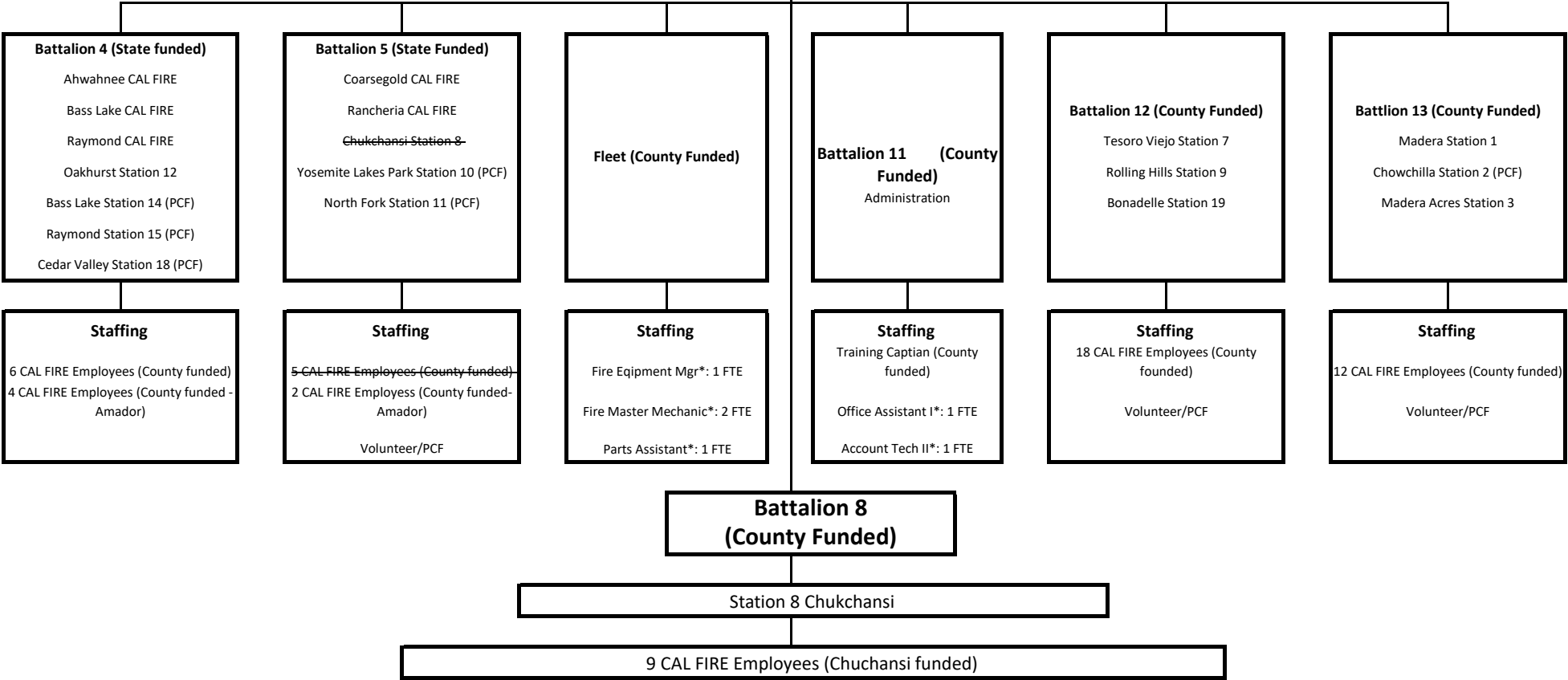
Total FTE: 16.0

Total FTE: 24.0

Fire Department

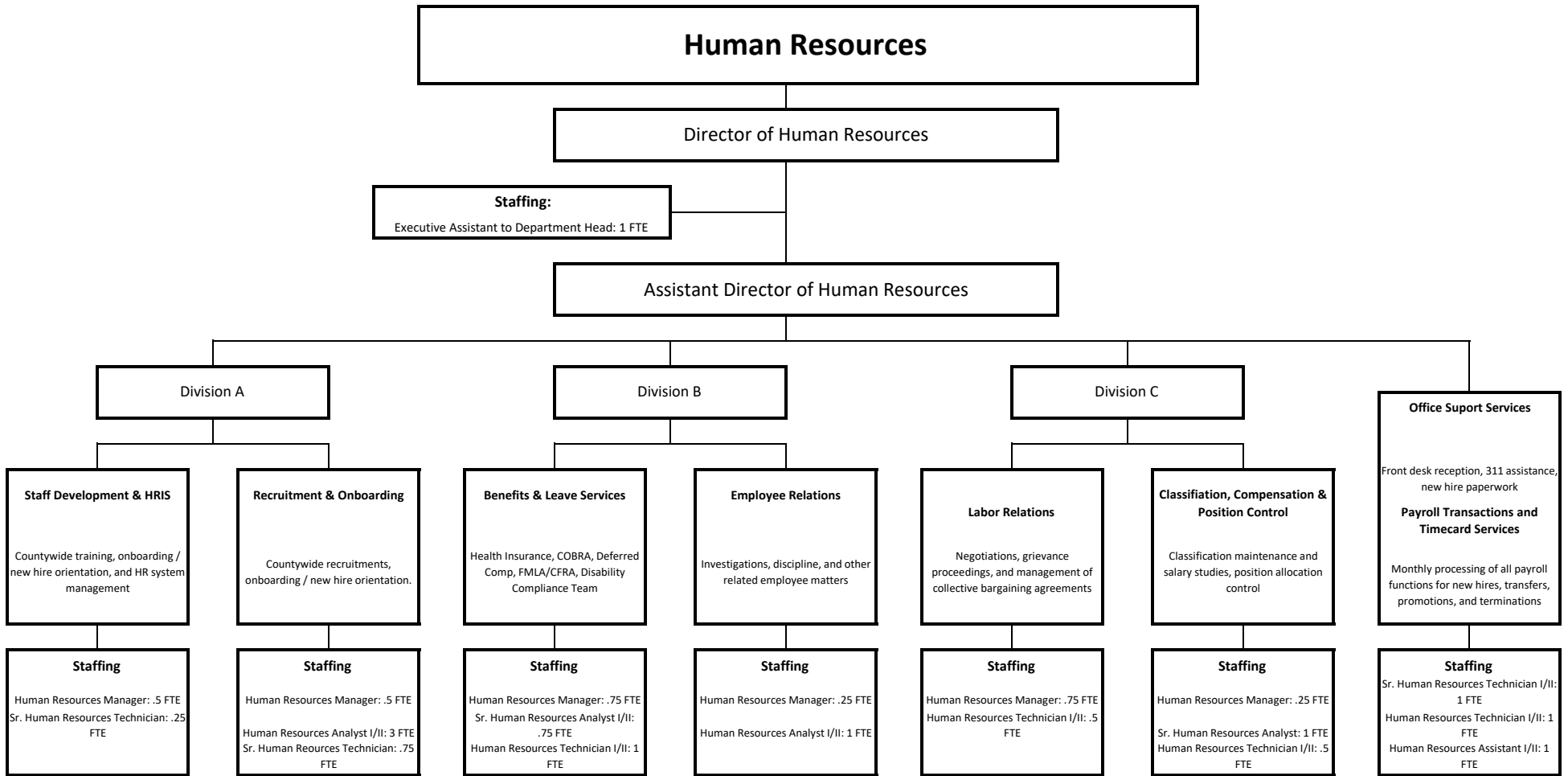
Fire Chief
(State Funded)

Assistant Chief
(State Funded)



Total FTE: 6*

* Represents County Employees



Total FTE: 18.0

Information Technology

Chief Information Officer: 1 FTE

GIS Manager: 1 FTE

Deputy Chief Information Officer - Client Services: 1 FTE
Deputy Chief Information Officer - Network & Security Services : 1 FTE

Staffing

Executive Assistant to the Department Head: 1 FTE
Program Assistant I: 1 FTE (unfunded)

Network Services IT Division
Manager: 1 FTE

Application Services IT Division
Manager: 1 FTE

Customer Services IT Division
Manager: 1 FTE

Network Security Services

Staffing

Sr. Network Engineer: 2 FTE
Sr. System Engineer: 1 FTE
System Engineer: 1 FTE
Network Engineer I/II: 4 FTE

Staffing

Information Systems Supervisor: 1 FTE
Sr. IT Systems Analyst: 1 FTE
IT Systems Analyst I/II: 2 FTE
Database Administrator: 1 FTE

Staffing

Sr. IT Systems Analyst: 2 FTE
IT Systems Analyst I/II: 3 FTE

Staffing

Sr. Network Security Engineer: 1 FTE
Network Security Engineer: 1 FTE

Total FTE: 29.0

Sheriff's Office-Jail Division

Assistant Sheriff

Corrections Director

Admin Analyst: 1 FTE

Assistant Corrections Director

Operations Lieutenant: 1 FTE

Administrative Lieutenant: 1 FTE

Operations
Provides oversight of the day-to-day operations of the County Jail, including: Inmate Population Management; Jail Services; and Special Operations Response Team

Transportation
Provides transportation services; Court Holding Security; and support to Jail Operations

Administration
Provides administrative services to the public; support to Jail Operations; DPPM update; Annual Training to sworn staff; Contract Backgrounds; and Facility Maintenance.

Support Services
Provides support for Jail operations, including: Records Management; AB 109; Inmate Programs; Community Service; Human Resources; and Accounting Services

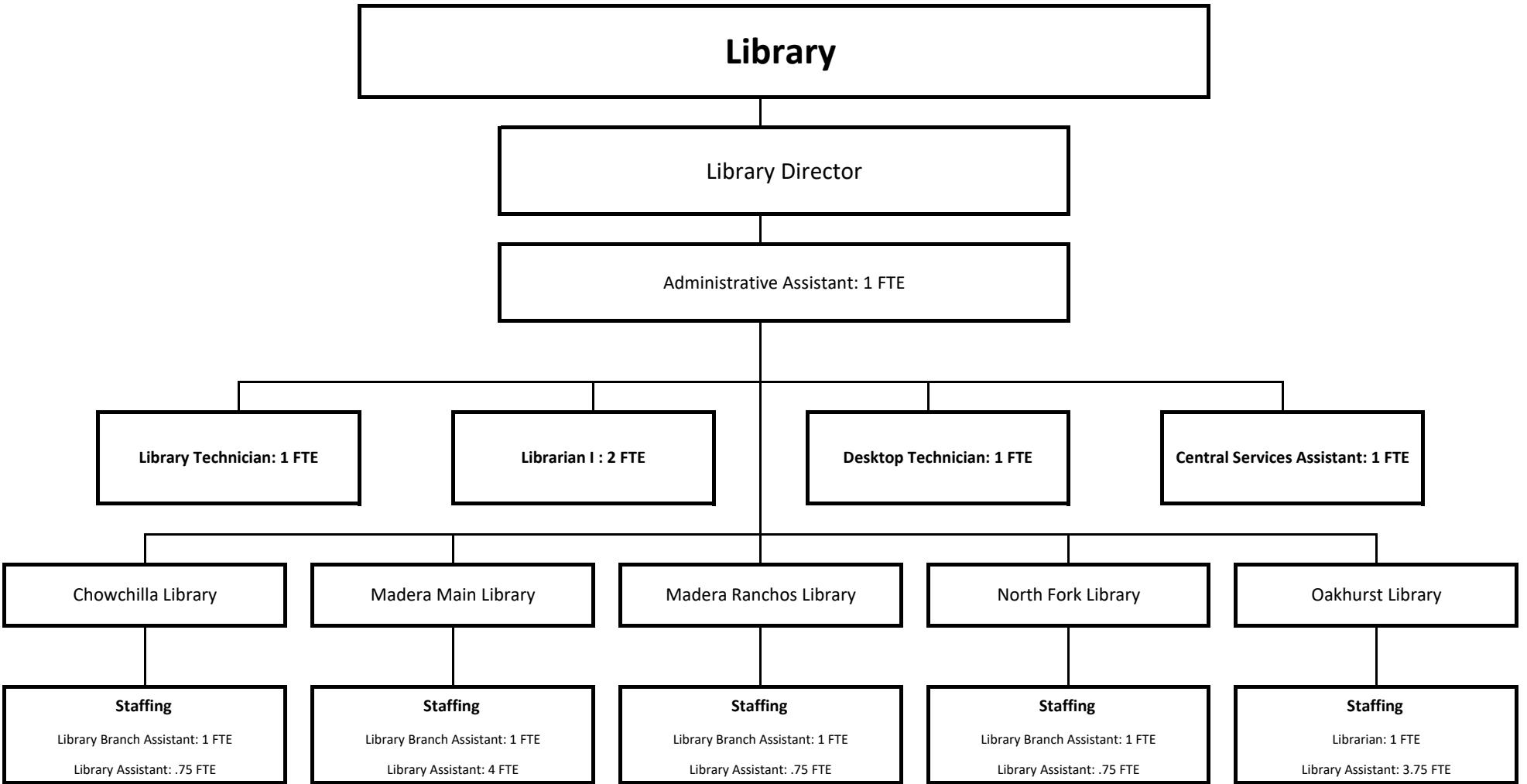
Staffing
Correctional Sergeants: 4 FTE
Correctional Corporals: 9 FTE
Correctional Officer I/II: 75 FTE

Staffing
Correctional Sergeant: 1 FTE
Correctional Corporal: 1 FTE
Correctional Officer I/II: 8 FTE

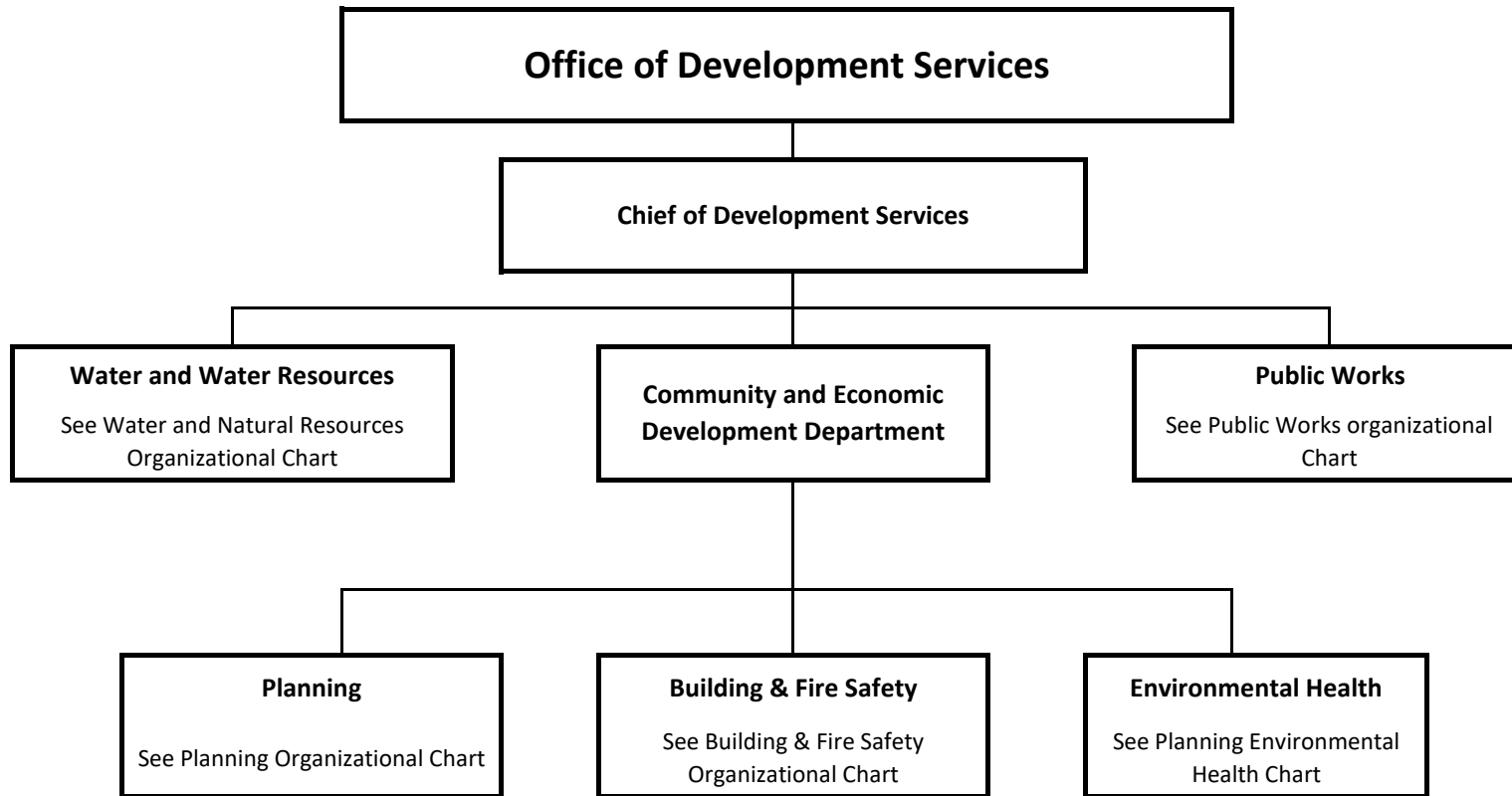
Staffing
Correctional Sergeant: 1 FTE
Correctional Corporal: 1 FTE
Program Assistant I/II: 4 FTE
Building Maintenance: 1 FTE

Staffing
Correctional Sergeant: 1 FTE
Correctional Officer I/II: 1 FTE
Business Systems Analyst II: 1 FTE
Personnel Technician I/II: 2 FTE
Admin. Analyst: 2 FTE
Records Specialists I/II: 7 FTE
Sr. Program Assistant: 1 FTE

Total FTE: 125.0



Total FTE: 22.0



Total FTE: 200.0

Department of Public Health

Health Officer

Public Health Director

Deputy Public Health Director - Clinical Services

Assistant Public Health Director

Deputy Public Health Director - Operations

Children's Medical Services

Provides care coordination assistance and case management to families with children who have special medical needs, as well as Lead poisoning prevention services.

Clinical Services

Includes immunizations, infectious disease testing, and speciality clinic services including and treatment of Tuberculosis and sexually transmitted diseases.

Communicable Disease Control & Prevention

Provides mandated reporting as well as infectious disease surveillance, investigation, prevention, and health outreach.

Laboratory Services

Monitors & detects public health threats from infectious diseases, contamination in drinking water, and provides drug testing.

Equity, Preparedness, Improvement and Communication

Accreditation, emergency preparedness, public communication, quality improvement and strategic planning.

Epidemiology Services

Provides Vitals Statistics services; disease mitigation, analysis, and research.

Community Wellness

Provides health education to prevent chronic diseases, builds community capacity for emergency preparedness, and provides Vital Statistics services.

Maternal, Child & Adolescent Health

Provides case management services to address comprehensive health, physical, psychosocial needs of the maternal, child, & adolescent population.

Women, Infant & Children's Program

Provides supplemental foods, health care referrals, and nutrition education for low-income pregnant, breastfeeding, and post-partum women, and to infants & children up to age five.

Administration

Provides oversight to department payroll and human resources functions, as well as provider outreach.

Fiscal & Operations Services

Manages budgets, contracts, billing, accounts payable, accounts receivable, special revenues, special projects, information technology support, mobile health services, inventory, facility support, pharmacy reimbursement program, and emergency medical services provider reimbursement.

Staffing

PH Program Manager: 1 FTE
Supervising PHN: 1 FTE
PT/OT Unit Supv: 1 FTE
Physical Therapist: 1 FTE

Occupational Therapist: 1 FTE

PHN: 11 FTE
PH Ed Asst: 2 FTE
Therapy Asst: 1 FTE
Sr. Prog Asst: 1 FTE
Program Asst: 2 FTE
Admin Asst: 1 FTE
Account Tech: 1 FTE

Staffing

PH Program Mgr: 1 FTE
PHN: 1 FTE
RN: 1 FTE

Hlth Ed Specialist: 1 FTE (1 U/F)

PH Clin Svcs Asst: 4 FTE (1 U/F)
Prog Asst: 1 FTE
Office Asst: 2 FTE

Staffing

Program Manager: 1 FTE
PHN: 2 FTE
PH Ed Asst: 1 FTE
CD Investigator: 1 FTE
Hlth Ed Specialist: 3 FTE
PH Clin Services Asst: 1 FTE

Staffing

Lab Director: 1 FTE
Lab Manager: 1 FTE
PH Microbiologist: 1 FTE
Lab Technician: 2 FTE
Sr. Program Asst: 1 FTE

Staffing

Program Manager: 1 FTE
Sr. Admin Analyst: 1 FTE (1 U/F)
Admin Analyst: 2 FTE
Hlth Ed Coordinator: 4 FTE

Comm. Health & Well Asst: 2 FTE
Hlth Ed Specialist: 3 FTE
Program Assistant: 1 FTE

Staffing

Sr. Epidemiologist: 1 FTE
Epidemiologist: 1 FTE
Sr. Program Asst: 1 FTE
Program Asst: 1 FTE
Hlth Ed Specialist: 1 FTE

Staffing

PH Program Mgr: 1 FTE
Hlth Ed Coordinator: 4 FTE (1 U/F)
Hlth Ed Specialist: 5 FTE

Comm. Hlth & Well Asst: 1 FTE
PH Ed Asst: 1 FTE

Staffing

PH Program Mgr: 1 FTE
PHN: 1 FTE
Hlth Ed Coordinator: 2 FTE
Hlth Ed Specialist: 2 FTE
PH Ed Asst: 5 FTE
PH Case Mgmt Asst: 2 FTE (1 U/F)

Staffing

PH Program Manager: 1 FTE
Adm Analyst: 1 FTE
Reg Dietician: 1 FTE
Sr. Nutrition Asst: 3 FTE
Nutritionist: 2 FTE
Nutrition Asst: 11 FTE

Staffing

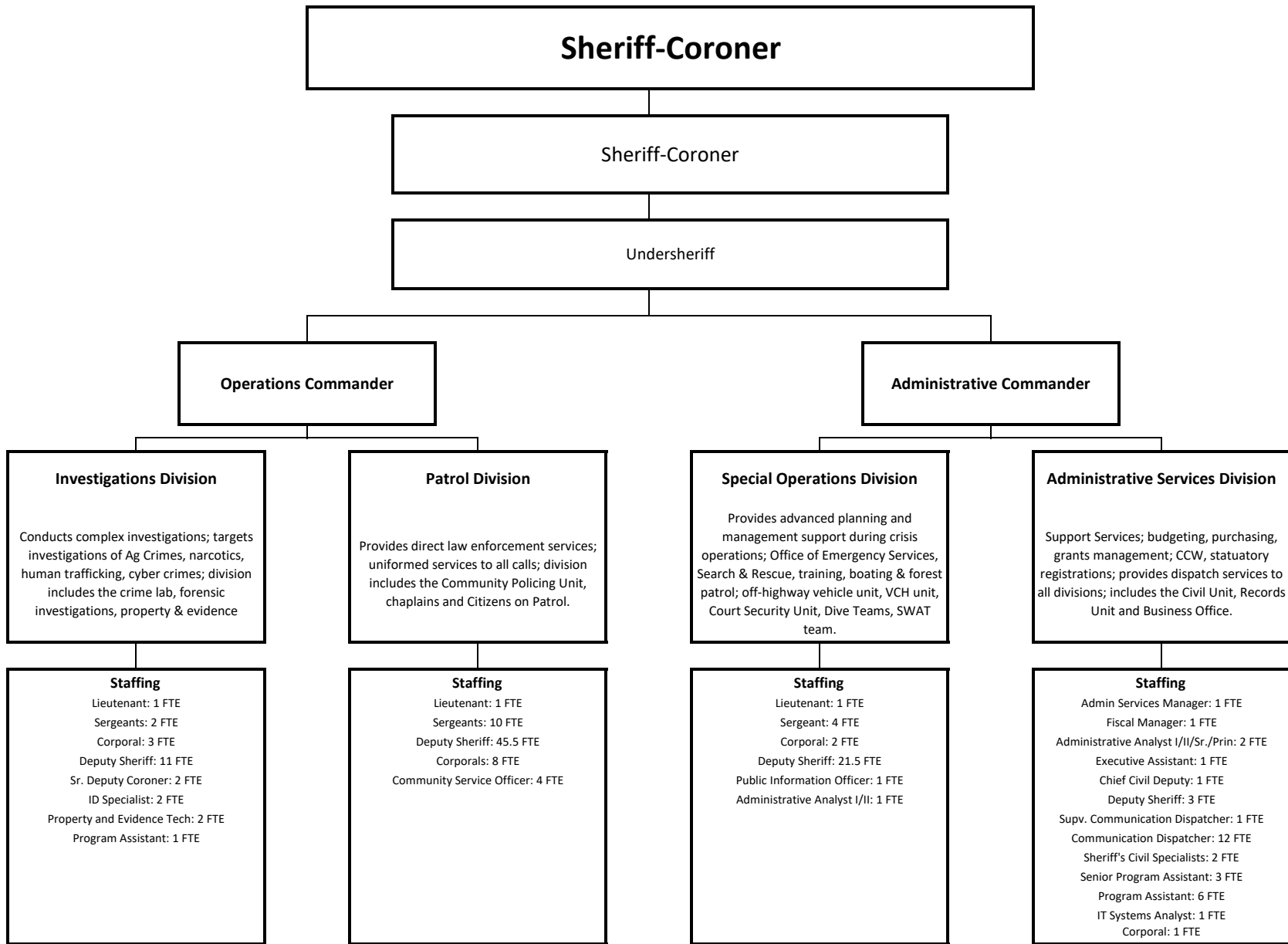
Admin Analyst: 2 FTE
Executive Asst: 1 FTE

Hlth Ed Specialist: 2 FTE (1 U/F)

Staffing

Fiscal Manager: 1 FTE
Program Manager: 1 FTE
Hlth Ed Coordinator: 1 FTE
Hlth Ed Specialist: 1 FTE

Sr. Admin Analyst: 2 FTE (1 U/F)
Admin Analyst: 5 FTE
PHN: 1 FTE
RN: 1 FTE
Ph Clin Svcs Asst: 2 FTE
Sr. Account Tech: 2 FTE
Account Tech: 1 FTE
Business System info Analyst: 1 FTE
Program Asst: 1 FTE

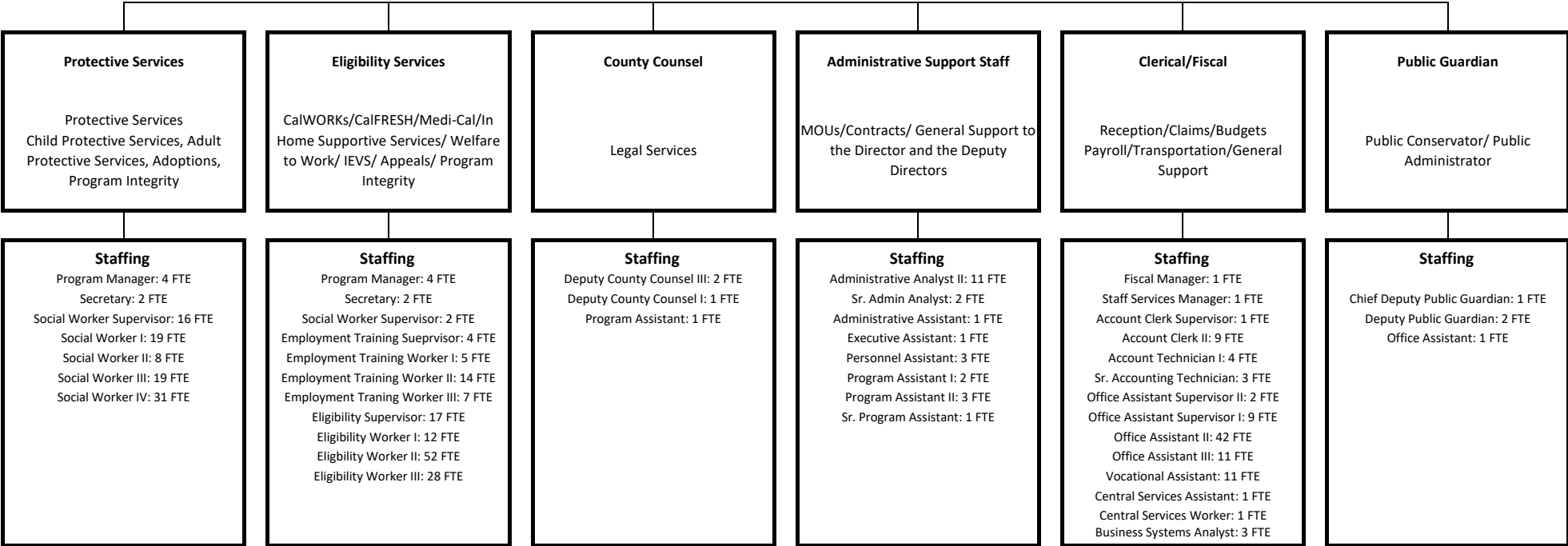


Total FTE: 164.0

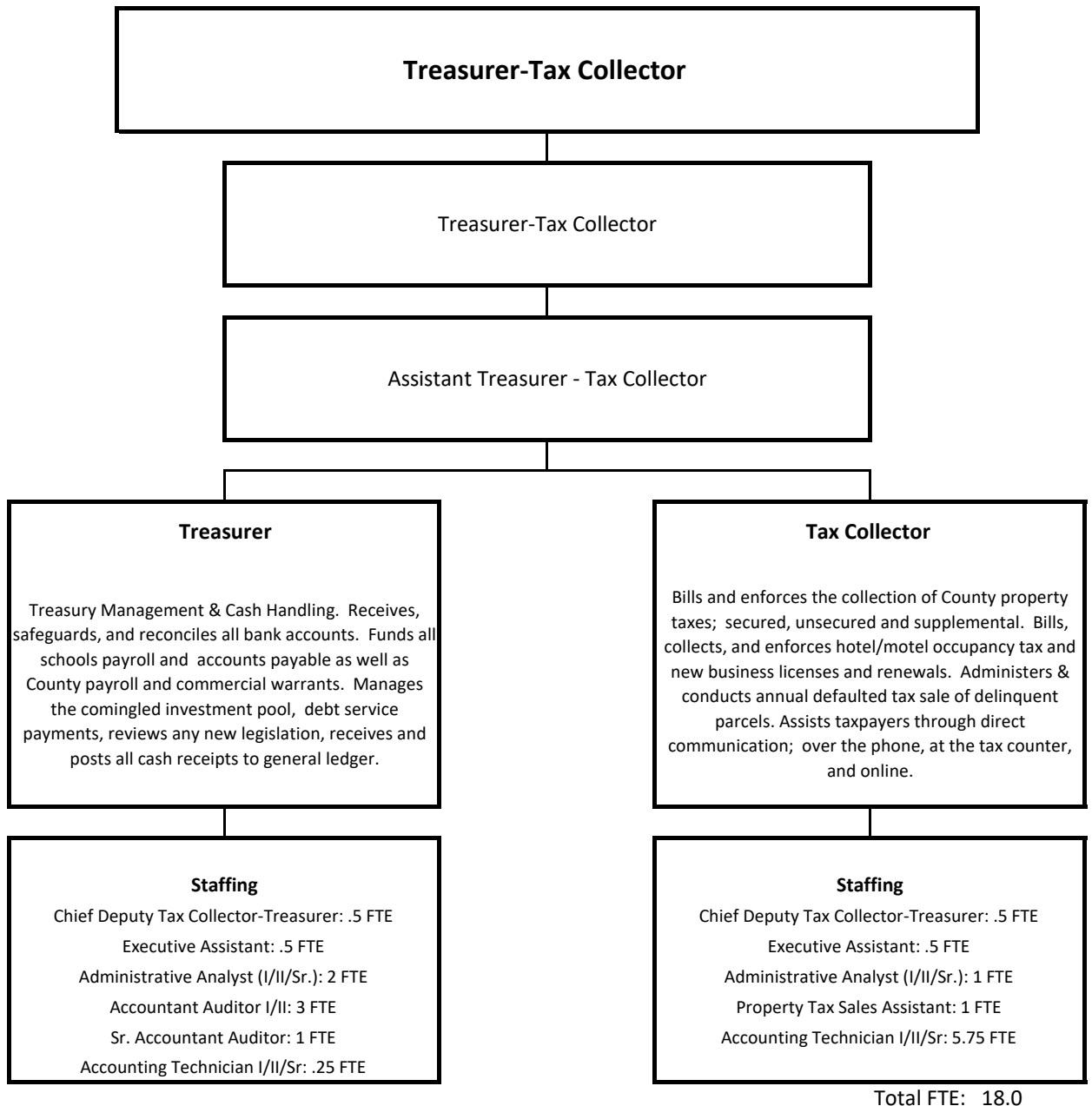
Social Services

Director/Public Guardian/Conservator/Public Authority

Deputy Director: 3 FTE



Total FTE: 381.0



Veterans Service Office

Veterans Service Officer

Department Responsibilities
Assist Veterans, their Spouses, Widow's, and Dependents with Federal, State & Local Benefits

Staffing
Veterans Service Representative: 2 FTE
Veteran Service Assistant: 1 FTE

Total FTE: 4.0

Water and Natural Resources

Director: 1 FTE

Deputy Director: 1 FTE

Groundwater Sustainability Agencies (GSA'S)
three groundwater sustainability agencies in the Madera, Chowchilla, and Delta-Mendota Subbasins

Staffing
Water Resources Specialist I/II/III: 6 FTE
Administrative Analyst I/II/III: 1 FTE
Program Assistant I/II/III: 1 FTE

Flood Control Agency
a special district to maintain channels and levees

Staffing
Water Resources Specialist I/II/III: 1 FTE

Watershed Health
integrated upper and lower watershed health

Total FTE: 6.0