

March 2022 | Vol. 16 | Issue 3



Madera County... *The Perfect Location*

Madera County E-Biz

News about local business is always welcome!

Madera County EDC assists with business recruitment, expansion and retention with a particular focus on new job creation. We provide free and confidential assistance to businesses looking to expand or relocate to Madera County.

Please contact us if you need the following:

- Business/Project Assistance
- Business Advice
- Business Incentive Information
- Small Business Gap Financing
- Industrial & Commercial Site Selection
- Site Tours
- Demographics
- Quarterly Industrial Vacancy Reports
- Information on Workforce Programs
- General Information or Questions about Madera County

Madera County EDC (559) 675-7768
2425 West Cleveland Ave., Ste. 101, Madera CA 93637
www.maderacountyedc.com • info@maderacountyedc.com

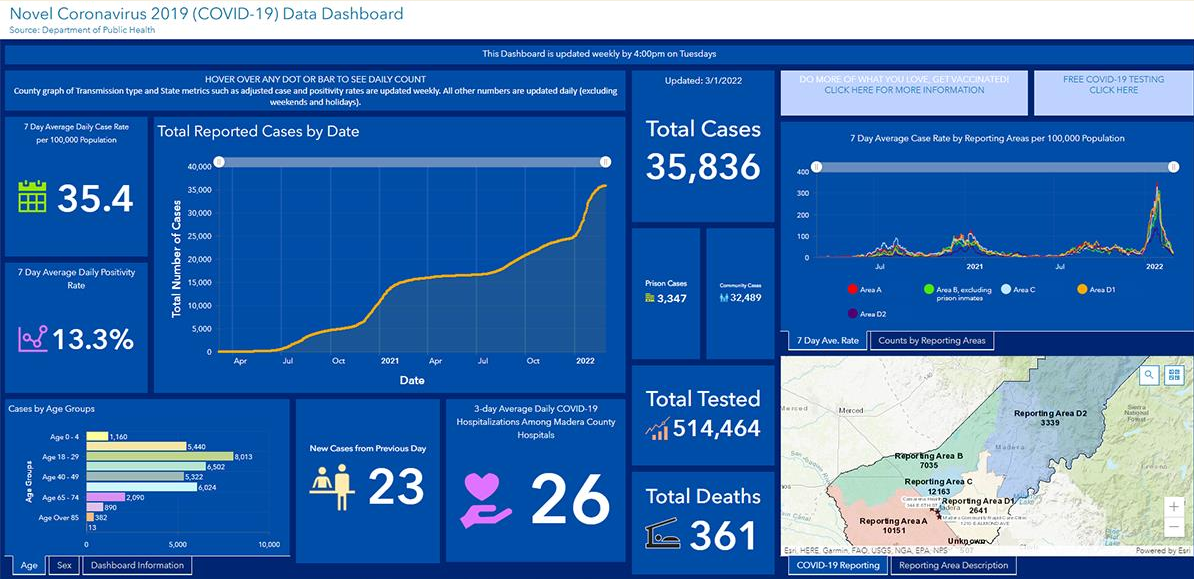
You may also find us on:



Visit our Website

COVID-19 Virus Information

The Madera County Public Health Department's tool for reporting COVID Cases



What to do if I think I have COVID-19? Visit this site for detailed instructions.

[Detailed Instructions](#)

Madera County Vaccination Distribution Now

[Get Your Vaccine](#)

COVID-19 Vaccine Booster Shots are available now

[Schedule Your Booster Shot Now!](#)

Order vaccine test kits

[Place your order here](#)

Madera County Business Guidance

Visit our website

Employer Playbook - The California Department of Public Health has developed a detailed Employer Playbook for a Safe Reopening to help businesses plan and prepare for reopening safely.

Employer COVID-19 Guidance and Resources

LOCAL STATS

Featured Property

AVAILABLE FOR LEASE

425 S. Pine Street, 395 Noble Street, 454 Noble Street - Madera, CA 93637



For Additional Information Please Contact:

Nick Audino, SIOR
Senior Vice President - Industrial Division
559.447.6270
naudino@pearsonrealty.com
CA DRE #01231272

Kyle Riddering
Sales Associate - Industrial Division
559.285.7260
kriddering@pearsonrealty.com
CA DRE #02094434

 **Newmark**
Pearson Commercial
Independently Owned and Operated
www.newmarkpearson.com

FRESNO OFFICE
7480 N Palm Ave #101
Fresno CA 93711
559.432.6200

VISALIA OFFICE
3447 S Demaree St
Visalia CA 93277
559.732.7300

Procuring broker shall only be entitled to a commission, calculated in accordance with the rates approved by our principal only if such procuring broker executes a brokerage agreement acceptable to us and our principal and the conditions as set forth in the brokerage agreement are fully and unconditionally satisfied. Although all information furnished regarding property for sale, rental, or financing is from sources deemed reliable, such information has not been verified and no express representation is made nor is any to be implied as to the accuracy thereof and it is submitted subject to errors, omissions, change of price, rental or other conditions, prior sale, lease or financing, or withdrawal without notice and to any special conditions imposed by our principal.

For Lease – Industrial Buildings; Noble & Pine Street, Madera
425 South Pine Street, Madera

- Zoning: Industrial

- Total Building Size: 67,500 +/- sq. ft.
- Lease Price: \$0.45 per SF, per month, NNN
- Doors: 2 dock doors & 11 grade doors
- Clear Height: 17' minimum
- Electrical: Three-phase power/ 800 amp
- Water/Sewer: City Services
- Comments: The subject property is a total of 3 buildings, which includes 61,227 SF of warehouse space including 6,250 cold storage, and 6,273 SF of office space. Please **see the flyer link** for the site layout.

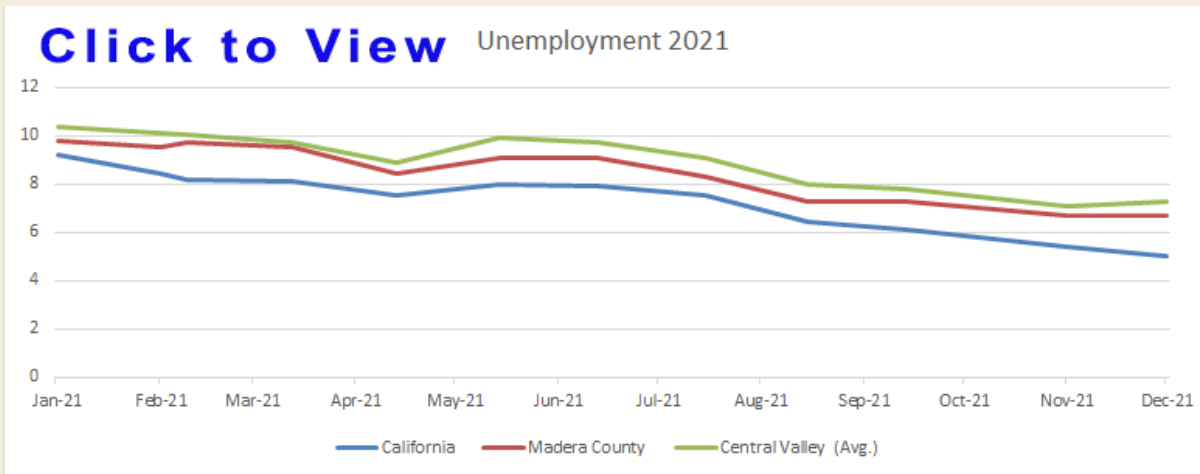
Property Details

*Property information was gathered from sources deemed reliable. MCEDC is not responsible for inaccuracies.

[Click here for a listing of Madera County properties](#)

RESOURCE INFORMATION

Madera County Unemployment Rate



December 2021

- Madera County 6.7%
- Central Valley (Avg.) 7.25%
- California 5.0%

*Central Valley counties include: San Joaquin, Stanislaus, Merced, Madera, Fresno, Tulare, Kings & Kern
 Source: www.labormarketinfo.edd.ca.gov

NEWS



Mountain businesses thrilled to see snow, increased tourism
abc30.com

FRESNO, Calif. (KFSN) -- A look at the web cameras in Shaver Lake Tuesday afternoon (February 22, 2022) shows several inches of snow now blanketing the community -- with more on the way. Leah Cordello at Shaver Lake Gas and Food Mart says it's fun to see tourists come through to play in the snow. "We do get a lot of families that come in here, they pick up the sleds," Cordello said. But she says the bulk of the business comes from people headed for the slopes. Tim Cohee, the managing partner at China Peak, says this season has been the best the resort has ever had.

[Read more.](#)



Saint-Gobain Invests \$32 Million to Upgrade Equipment in Chowchilla, California, Increasing Insulation Production Capacity by 13% and Reducing Carbon Footprint

thebusinessjournal.com

CHOWCHILLA, Calif.--(BUSINESS WIRE)--Saint-Gobain, through its building products subsidiary CertainTeed LLC, is investing \$32 million to upgrade equipment at its insulation plant in Chowchilla, California, allowing the facility to expand its production capacity by 13%. The new oven, new furnace, and new equipment installed at the plant will consume less natural gas and electricity, ultimately reducing the facility's carbon footprint by more than 4,000 metric tons per year. The investments in Chowchilla were first announced in November as part of a broader \$400 Million expansion of Saint-Gobain's manufacturing facilities in the United States, and come only months after the company announced its global Grow and Impact strategy, which includes increasing its presence in key high-growth markets while reducing its environmental footprint.

[Read more.](#)



[New Juice Shops Opening in Madera, Fresno's Campus Pointe](http://thebusinessjournal.com) thebusinessjournal.com

Health-conscious Central Valley residents will soon have two more options to choose from for their daily juice fix. Rick Rosales, founder, and owner of Fresno's Raw Earth Juicery said a third location is scheduled to open at Fresno's Campus Pointe on Feb. 28. This one will be different because it will offer a food menu in addition to juice and smoothies. Rosales is especially excited about his menu that features breakfast and lunch options including avocado toast, pancakes and eggs, sandwiches, organic salads, and vegan options. Flour tortillas for burritos will be homemade in the store. He even hired a baker who makes organic sourdough bread from scratch. "You won't understand how good it is until you start eating it," he said.

[Read more.](#)



The Pines Resort Wins Poppy Award for Best Content Marketing sierranewsonline.com

BASS LAKE — The Pines Resort is happy to announce that they have been named the Poppy Award winner for the best content marketing in California from Visit California. The Visit California Poppy Awards honor the best and brightest of California tourism promotion. The awards are bestowed in even-numbered years and serve as the finale to Outlook Forum. This year's awards featured eight categories encompassing core disciplines in tourism marketing and destination management. Poppy Award recipients are chosen by expert judges from the tourism industry.

[Read more.](#)



Fair brings home industry's highest award maderatribune.com

For the first time in Madera District Fair's history, it was awarded the prestigious Merrill Award while attending the 99th annual Western Fairs Association's convention in Reno, Nevada last month. The Merrill Award, named in honor of Western Fairs Association Founder Louis Merrill, is given for those entries that clearly demonstrate innovation, vision, and excellence. "This is a yearly convention and there were competitions we entered," said Madera Fair CEO Tom Mitchell. "We always do very well with those because we have a great staff here. This one here was a big one. It was the first time Madera Fair has won the award. It means a lot." Madera Fair earned the nomination for Fair Camp TV, which evolved from Virtual Fair Camp stemming from the original Fair Camp collaboration with City of Madera Parks and Recreation in 2018.

[Read more.](#)



[Madera celebrates Black History Month](#)
[maderatribune.com](#)

For the second straight year, Madera City Councilwoman Anita Evans spearheaded her second Black History Month Celebration at McNally Park. On a picture-perfect day and under a giant American Flag from the Madera County Fire Department, Evans welcomed about 100 people Sunday. "This is such an amazing event," Evans said. "This is an intimate setting. I like interaction. It was beautiful. Everyone that was supposed to be here was here. It was absolutely amazing. This was awesome." Many different Madera officials were in attendance for the annual event, including Madera Mayor Santos Garcia, Madera County Sheriff Tyson Pogue, and Madera City Manager Arnoldo Rodriguez. "This is not just a black event. This is an everybody event," Evans said.

[Read more.](#)



Vyve's 25-Market Fiber Expansion Delivers Essential, Business-Boosting Connectivity

Vyve Fiber press release

FRESNO, Calif. (KFSN) -- Give a little to make a big difference! This year's Kids Day is Tuesday, March 8. The annual fundraiser for Valley Children's Hospital may look a little different this year, but the mission is still the same: supporting the only children's hospital in the central valley. Since 1988, Valley Children's has partnered with ABC30 and The Fresno Bee to orchestrate Kids Day. As one of the largest fundraising events in the Central Valley, Kids Day hosts more than 20 communities to help raise funds to support Valley Children's greatest needs.

[Read more.](#)



Valley Children's Announces New Cochlear Implant Center valleychildrens.org

(Madera, California) – Valley Children's has taken another step in its commitment to providing the highest quality of care to children in the Central Valley through the establishment of the first pediatric Cochlear Implant Center in the region. The Valley Children's Cochlear Implant Center provides children needing cochlear implants a dedicated home to see a multidisciplinary team of pediatric subspecialists at one time, in a single location. This multidisciplinary team includes professionals from audiology, speech-language pathology, and otolaryngology. "When a family decides with a medical specialist that a cochlear implant is the best medical decision for their child, the last thing they want is to have to make multiple trips to different facilities, taking possible days off work, impacting their families schedule and causing additional stress on their child," explains Dr. Kyle Robinette, pediatric otolaryngologist and medical director of Valley Children's Cochlear Implant Center.

[Read more.](#)

GOT EMPLOYEE DILEMMAS?

We have answers! Call the no-cost Madera WDB Human Resource (HR) Hotline to get advice on the proper and legal way to handle employee concerns before they become painful!

CALL YOUR FREE HR HOTLINE 888-202-4895

[Download the Madera County Hotline Flyer](#)

City of Chowchilla Small Business Loan Program

cityofchowchilla.org

The City of Chowchilla is offering a small business loan to qualified businesses that have suffered financial hardships due to the COVID-19 pandemic. Contact Mark E. Hamilton, Director of Community & Economic Development.

Email: mhamilton@cityofchowchilla.org

Direct: (559) 665-8615 x400

[View the Program Flyer](#)

City of Madera Funds are still available:

maderacountyedc.com

\$5,000 Grant

ECONOMIC DEVELOPMENT

Why Communities Invest in Economic Development



Fostering a range of business types that diversify the local tax base, keep our local economy strong, and celebrate our unique community fabric.

Benefits of Economic Development Include:

- Maintain, increase, & diversify tax base
- Increase revenues faster than cost of municipal services increase
- Business Retention
- Economic vitality and diversification for commercial and industrial areas

- Maximize property through highest & best use
- Create and retain jobs, increase per capita income
- Self-sufficiency in the face of state and federal budget issues
- Recognition of local products
- Beneficial partnerships between local governments, businesses, & community members

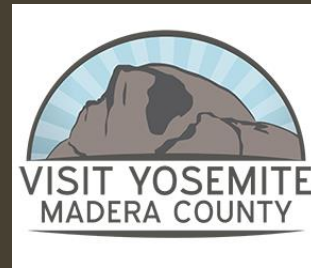
RESOURCES

Resource Links for Financial Aid and Business Advice

- [Valley Community SBDC](#)
- [Fresno County SCORE](#)
- [U.S. Small Business Administration, Fresno office](#)
- [Madera County Tools for Business](#)
- [Cen Cal Business Finance Group](#)



[2020-2021
Annual Report](#)



[Yosemite Sierra
YouTube website](#)

CONTACT

Madera County EDC
2425 West Cleveland Ave., Ste. 101
Madera CA 93637
(559) 675-7768

maderacountyedc.com • info@maderacountyedc.com

Thank you for reading our newsletter!

Bobby Kahn, Executive Director
Madera County EDC



workingarts design