

January 2022 | Vol. 16 | Issue 1



Madera County... *The Perfect Location*

Happy New Year!

## Madera County E-Biz

**News about local business is always welcome!**

Madera County EDC assists with business recruitment, expansion and retention with a particular focus on new job creation. We provide free and confidential assistance to businesses looking to expand or relocate to Madera County.

**Please contact us if you need the following:**

- Business/Project Assistance
- Business Advice
- Business Incentive Information
- Small Business Gap Financing
- Industrial & Commercial Site Selection
- Site Tours
- Demographics
- Quarterly Industrial Vacancy Reports
- Information on Workforce Programs
- General Information or Questions about Madera County

**Madera County EDC (559) 675-7768**  
**2425 West Cleveland Ave., Ste. 101, Madera CA 93637**  
[www.maderacountyedc.com](http://www.maderacountyedc.com) • [info@maderacountyedc.com](mailto:info@maderacountyedc.com)

You may also find us on:



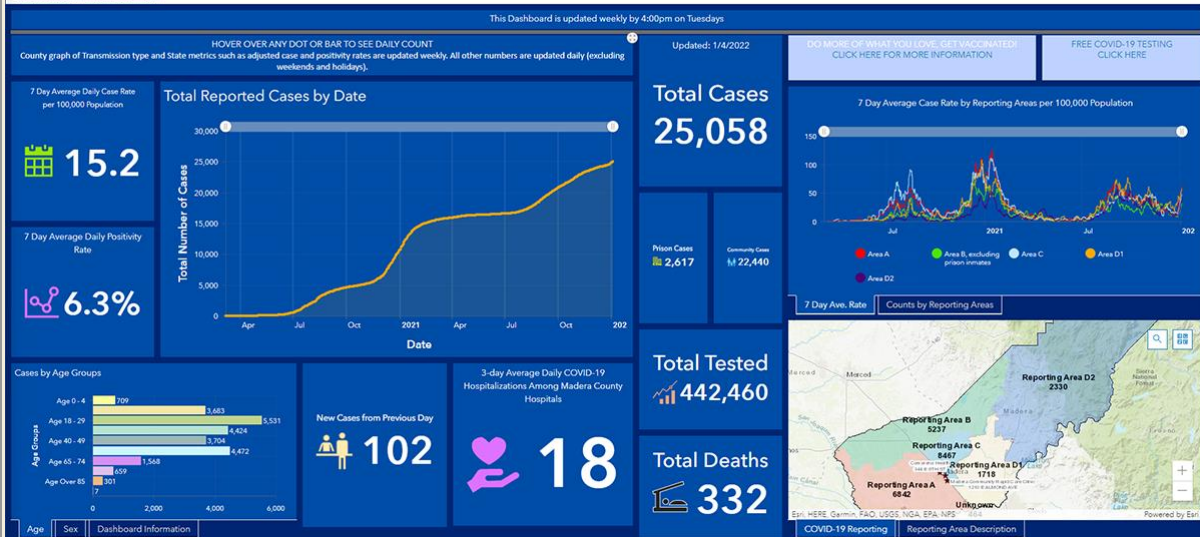
Visit our Website

## COVID-19 Virus Information

The Madera County Public Health Department's tool for reporting COVID Cases

Novel Coronavirus 2019 (COVID-19) Data Dashboard

Source: Department of Public Health



What to do if I think I have COVID-19? Visit this site for detailed instructions.

Detailed Instructions

Madera County Vaccination Distribution Now

[Get Your Vaccine](#)

COVID-19 Vaccine Booster Shots are available now

[Schedule Your Booster Shot Now!](#)

Madera County Business Guidance

[Visit our website](#)

The COVID-19 Prevention Emergency Temporary Standards are still in effect. The workplace standards were updated in December 2021 to include minor revisions related to returning to work after close contact. The revisions are effective starting on January 14, 2022. In addition to these requirements, employers must follow public health orders on COVID-19. The latest order from the California Department of Public Health on December 13, 2021, requires the use of face coverings by all employees when indoors. More information on the COVID-19 Prevention Emergency Temporary Standards is available in Cal/OSHA's Fact Sheet.

[Employer COVID-19 Guidance and Resources](#)

## LOCAL STATS

**Featured Property**



**For Sale - 151,235 sq. ft. Industrial Building Chowchilla, CA  
16505 Avenue 24 1/2**

- Price \$4,236,000
- Great Central Valley distribution location
- Near HWY 99
- Easy in and out
- High capacity storage
- 35" ceiling
- 18 +/- acres

**Property Details**

\*Property information was gathered from sources deemed reliable. MCEDC is not responsible for inaccuracies.

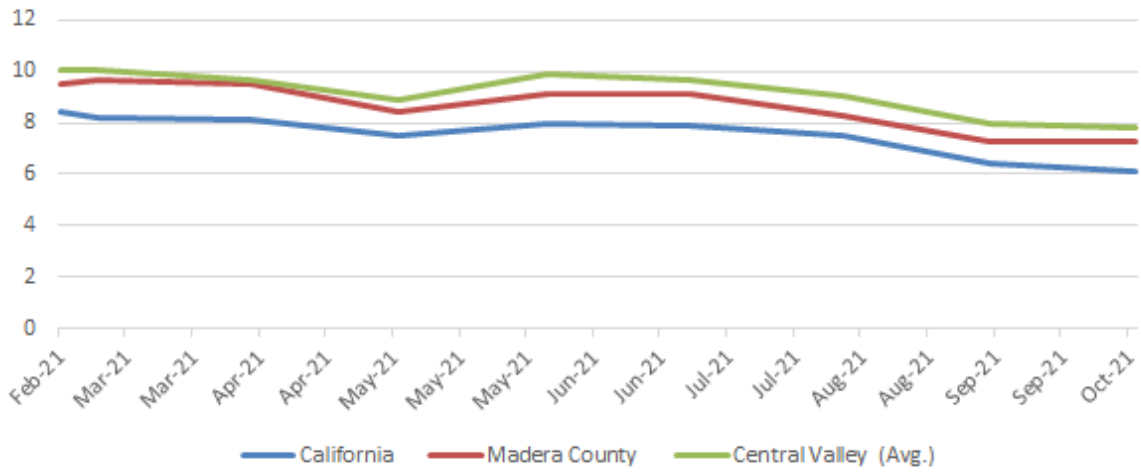
[Click here for a listing of Madera County properties](#)

**RESOURCE INFORMATION**

**Madera County Unemployment Rate**

[Click to View](#)

## Unemployment 2021



### November 2021

- Madera County 6.7%
- Central Valley (Avg.) 7.1%
- California 5.4%

\*Central Valley counties include: San Joaquin, Stanislaus, Merced, Madera, Fresno, Tulare, Kings & Kern  
Source: [www.labormarketinfo.edd.ca.gov](http://www.labormarketinfo.edd.ca.gov)

## NEWS



## **Madera County Economic Forecast: Online Fulfillment Has Arrived**

[thebusinessjournal.com](https://thebusinessjournal.com)

Madera County is preparing to join the e-commerce distribution revolution in the New Year. Industrial space has always been in short supply in Madera County, with much of the demand coming from value-added agricultural operations — food processing, container manufacturing, etc. But with two e-commerce operations in the works, Madera is preparing to join the ranks of Fresno and Visalia as fulfillment hubs in the Golden State. That is welcome news for a county that is rapidly diversifying its traditional farm economy while also growing in ways not seen in other Central Valley locales. On both the commercial and residential sides, Madera County is primed for growth in 2022 despite challenges that include Covid-19, drought, clogged supply chains, and more

**[Read more.](#)**



## **The newest Dutch Bros Coffee is opening just north of Fresno.**

### **What you need to know**

[fresnobee.com](https://fresnobee.com)

The newest Dutch Bros Coffee location just north of Fresno will open at 5 a.m. Wednesday. It will be the first Dutch Bros in Madera and is near the southwest corner of Avenue 12 and Highway 41. It's at Riverwalk at Riverstone, a new planned community that will mix housing, restaurants, and retail. Mexican restaurant Papi's

Mex Grill is also planning a new location there, along with several other local businesses.

**[Read more.](#)**



**[Sugar Pine isn't going anywhere anytime soon](#)**  
[maderatribune.com](#)

Contrary to social media beliefs, Sugar Pine Smokehouse isn't planning on leaving anytime soon. "There was a Tweet that went out that said the city had received paperwork that Sugar Pine was going to be demolished and an In-N-Out Burger was going to be built," said Sugar Pine general manager Lisa Gill. "There's still a ton of paperwork to be filled out. Nothing has been approved by the city or the Madera Irrigation District. It's something that could happen. Newman Development Group, which owns the building, has agreed to sell to In-N-Out. That is a true fact. Whether or not if it will be approved by the city will be another factor."

**[Read more.](#)**



2021  
Global Business & Interfaith  
Peace **Gold Medal**



Religious Freedom &  
Business Foundation

UN Global Compact



## King Husein - 2021 Global Business & Interfaith Peace Gold Medalist

[religiousfreedomandbusiness.org](https://religiousfreedomandbusiness.org)

King Husein, Chairman, and CEO of Span Construction & Engineering, has played a critical role in addressing the rising global tide of restrictions on religious freedom. King's efforts range from helping found the South Asian Consortium for Religion and Law Studies, to helping kick off the first-ever Business Roundtable to advance International Religious Freedom during the 2019 UN General Assembly in New York City. In diverse venues such as the Horation Global Conference in Portugal and the IRF Summit in Washington DC, King shares how religious ethics benefit business. His advocacy also looks toward the next generation by his helping launch an initiative at BYU Hawaii to equip students from across Asia to know how to advance religious freedom when they return home.

**[Read more.](#)**





**Major auto parts center heads to Chowchilla, promising nearly 300 new jobs. Here's the latest**  
[fresnobee.com](https://www.fresnobee.com)

Chowchilla is slated to host a new distribution center for AutoZone, Inc., bringing with it hundreds of new jobs to the city, the company announced Thursday. Construction isn't scheduled to start until the summer of 2022. But when it does, more than 280 new jobs in the Madera County region will follow, according to an AutoZone news release. "We are very excited for this new development and what it means for the City of Chowchilla and the people who live here," said Chowchilla Mayor John Chavez in a city news release. "We needed a way to create new jobs for the community, so they do not have to commute outside our city for work, and they can spend more time with their families."

**[Read more.](#)**



**State of the County**  
[maderacountyedc.com](http://maderacountyedc.com)

At the December 16th, 2021 State of the County luncheon, hosted at the Madera Municipal Golf Course banquet room, we heard from Chairman of the Board of Supervisors, Rob Poythress, City of Madera Mayor Pro tem, Anita Evans, Past Mayor of Chowchilla, Diana Palmer, and Chris Baker, President of the Eastern Madera County Foundation. We also witnessed the announcement of a major distribution center scheduled to locate in the City of Chowchilla. Thank you to our Sponsors, Comcast and Red Rock Environmental.

**ECONOMIC DEVELOPMENT**

## Why Communities Invest in Economic Development



*Fostering a range of business types that diversify the local tax base, keep our local economy strong, and celebrate our unique community fabric.*

### Benefits of Economic Development Include:

- Maintain, increase, & diversify tax base
- Increase revenues faster than cost of municipal services increase
- Business Retention
- Economic vitality and diversification for commercial and industrial areas
- Maximize property through highest & best use
- Create and retain jobs, increase per capita income
- Self-sufficiency in the face of state and federal budget issues
- Recognition of local products
- Beneficial partnerships between local governments, businesses, & community members

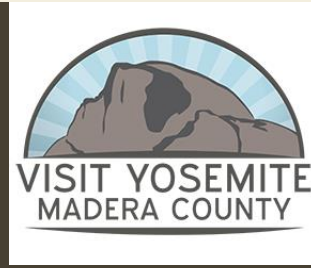
## RESOURCES

### Resource Links for Financial Aid and Business Advice

- [Valley Community SBDC](#)
- [Fresno County SCORE](#)
- [U.S. Small Business Administration, Fresno office](#)
- [Madera County Tools for Business](#)
- [Cen Cal Business Finance Group](#)



2019-2020  
Annual Report



Yosemite Sierra  
YouTube website

## CONTACT

**Madera County EDC**  
2425 West Cleveland Ave., Ste. 101  
Madera CA 93637  
(559) 675-7768

[www.maderacountyedc.com](http://www.maderacountyedc.com) • [info@maderacountyedc.com](mailto:info@maderacountyedc.com)

**Thank you for reading our newsletter!**

**Bobby Kahn, Executive Director**  
**Madera County EDC**



[workingarts design](#)