



# BOARD OF SUPERVISORS COUNTY OF MADERA

MADERA COUNTY GOVERNMENT CENTER  
200 WEST 4<sup>TH</sup> STREET / MADERA, CALIFORNIA 93637  
(559) 675-7700 / FAX (559) 673-3302 / TDD (559) 675-8970  
Agendas available: [www.MaderaCounty.com](http://www.MaderaCounty.com)

Members of the Board  
, District 1  
, District 2  
, District 3  
, District 4  
, District 5

## AGENDA ITEM SUBMITTAL

December 7, 2021

Chairman Robert L. Poythress

<b>DEPARTMENT</b> Community & Economic Development/Planning Division		<b>DEPARTMENT CONTACT</b> Maria Rocha 559-675-7821		<b>AGENDA ITEM</b> 7.e PUBLIC HEARINGS:	
<b>SUBJECT:</b> Supervisorial Boundary Redistricting, 6th Hearing		<b>REQUIRED VOTE:</b> 3/5 Votes Required	<b>DOC. ID NUMBER</b> 8022	<b>DATE REC'D</b>	
<b>STRATEGIC FOCUS AREA(S):</b> Community					
<u>For Clerk of the Board's Office Use Only</u>					
Is this item Budgeted? No Will this item require additional personnel? No Previous Relevant Board Actions: 9/7/2021, 10/12/2021, 10/19/2021, 11/2/2021, 11/16/2021 PowerPoint/Supporting Documents: Other/Misc.			<b>DOCUMENT NO(S).</b>		

### RECOMMENDED ACTIONS:

**Sixth Hearing** of the 2021 Supervisorial Boundary Redistricting process.

1. Discussion and consideration to adopt a Resolution adopting revised boundaries for Supervisorial Districts following the 2020 Federal Census.
2. **Introduction** of an Ordinance to repeal Title 1, Chapter 1.24, Sections 1.24.020 through 1.24.060 of the Madera County Code, in their entirety, and amending Chapter 1.24, Title 1, Section 1 relating to Supervisorial District Boundaries. **Waive the Reading and set the Second Reading for December 14, 2021.**

### DISCUSSION / FISCAL IMPACT / STRATEGIC FOCUS:

This is the sixth hearing regarding the Supervisorial Boundary Redistricting process for Madera County. Maps 4, 6, 7, 11, 12, 13 and 14 are before the Board for consideration. Staff recommends approval of Map 6, map 6 was prepared and is supported by Staff pursuant to Federal and State Laws, including Assembly Bill No. 849, known as the FAIR MAPS Act.

Shown in the tables below are the total population and estimated CVAP population distilled by race/ethnicity group across the five proposed District Boundaries.



# BOARD OF SUPERVISORS COUNTY OF MADERA

MADERA COUNTY GOVERNMENT CENTER  
200 WEST 4<sup>TH</sup> STREET / MADERA, CALIFORNIA 93637  
(559) 675-7700 / FAX (559) 673-3302 / TDD (559) 675-8970  
Agendas available: [www.MaderaCounty.com](http://www.MaderaCounty.com)

Members of the Board  
, District 1  
, District 2  
, District 3  
, District 4  
, District 5

**Map 6**

District	Total Population	Ideal Population	Deviation from Ideal	Percent Deviation from Ideal
1	30,225	30,223	2	0.01%
2	30,219	30,223	-4	-0.01%
3	30,228	30,223	5	0.02%
4	30,218	30,223	-5	-0.02%
5	30,223	30,223	0	0.00%
<b>Total:</b>	<b>151,113</b>	<b>151,115</b>		

Deviation between Largest and Smallest District      0.03%

Source: U.S. Census Bureau 2020 Decennial Census Data

Citizen Voting Age Population  
Map 6

District	Total Population	Hispanic or Latino	Not Hispanic or Latino									
			White Alone	American Indian or Alaska Native Alone	Asian Alone	Black or African American Alone	Native Hawaiian or Other Pacific Islander Alone	American Indian or Alaska Native and White	Asian and White	Black or African American and White	American Indian or Alaska Native and Black or African American	Remainder of Two or More Race Responses
1	18,200	9,464 52.0%	7,213 39.6%	247 1.4%	263 1.4%	719 4.0%	4 0.0%	182 1.0%	27 0.1%	36 0.2%	0 0.0%	47 0.3%
2	15,733	6,580 41.8%	7,687 48.9%	121 0.8%	624 4.0%	276 1.8%	34 0.2%	104 0.7%	1 0.0%	120 0.8%	0 0.0%	54 0.3%
3	16,450	9,040 55.0%	5,834 35.5%	60 0.4%	431 2.6%	802 4.9%	1 0.0%	101 0.6%	33 0.2%	64 0.4%	0 0.0%	71 0.4%
4	11,395	8,192 71.9%	1,970 17.3%	58 0.5%	80 0.7%	848 7.4%	0 0.0%	31 0.3%	0 0.0%	0 0.0%	25 0.2%	56 0.5%
5	24,310	3,512 14.4%	19,392 79.8%	419 1.7%	387 1.6%	147 0.6%	0 0.0%	291 1.2%	130 0.5%	43 0.2%	0 0.0%	45 0.2%
<b>Total:</b>	<b>86,088</b>	<b>36,788 42.7%</b>	<b>42,096 48.9%</b>	<b>905 1.1%</b>	<b>1,785 2.1%</b>	<b>2,792 3.2%</b>	<b>39 0.0%</b>	<b>709 0.8%</b>	<b>191 0.2%</b>	<b>263 0.3%</b>	<b>25 0.0%</b>	<b>273 0.3%</b>

Map 6 depicts the Citizen Voting Age Population derived by each proposed District, from the Statewide Database. The estimated percentage of Hispanic or Latino citizen voters is 42.7%. Based on the data from the Statewide Database, Map 6 would result in three majority Hispanic or Latino citizen voting age Districts. The majority Districts are District 1, 3, and 4. The total deviation between the smallest and largest supervisorial district boundary is 0.03%. Map 6 is well below the threshold of less than 10% peak deviation established by case law.



# BOARD OF SUPERVISORS COUNTY OF MADERA

MADERA COUNTY GOVERNMENT CENTER  
200 WEST 4<sup>TH</sup> STREET / MADERA, CALIFORNIA 93637  
(559) 675-7700 / FAX (559) 673-3302 / TDD (559) 675-8970  
Agendas available: [www.MaderaCounty.com](http://www.MaderaCounty.com)

Members of the Board

, District 1  
, District 2  
, District 3  
, District 4  
, District 5

Map 6 best meet the following criteria in order of priority:

1. Population Equality within allowed percentage deviation,
2. Racial and ethnic balance,
3. Geographic contiguity,
4. Respect for the integrity of local neighborhoods or communities of interest,
5. Respect for geographic integrity of cities or census designated places in a manner that minimizes its division,
6. Establishes boundaries that are easily identifiable and understandable by residents, following natural and artificial barriers, by streets or the boundaries of the county,
7. Does not favor or discriminate against a political party.

Currently, Chapter 1.24 of Title 1 of the Madera County Code includes the legal descriptions of each supervisorial district boundary. Per the Elections Code, the new map may be established by way of a resolution as opposed to an ordinance. As part of this recommendation, an ordinance is proposed to repeal Chapter 1.24 to eliminate the need to codify these descriptions. Nevertheless, the descriptions will be prepared at the Board's direction as the Elections Department relies on them, along with GIS shapefiles, to prepare ballots.

## Public Comment

Public input played a vital role throughout this process. During the 10<sup>th</sup> Annual Pomegranate, Fruit, and Nut Festival held at the Madera Fairgrounds, many City and County residents were able to review and comment on the proposed maps. Additional maps were received from the public immediately prior to the 5<sup>th</sup> Public Hearing on November 16, 2021.

Workshops were held at the Madera County Board Chambers, in the communities of Parksdale, Fairmead, and La Vina. Staff also presented information to Town Hall meetings and discussions. Staff has received recognition from the public regarding public outreach and preparation of maps that create a very small deviation between the largest district and smallest district.

As required by AB 849, a website was dedicated to the Redistricting process (in both English and Spanish) which included all the draft maps, public hearings, workshops, and general information regarding the process. In addition to the website, staff also noticed each hearing and workshops in all local newspapers, on social media, and to all requesting parties. Staff has also made live translation services available upon request.



# BOARD OF SUPERVISORS COUNTY OF MADERA

MADERA COUNTY GOVERNMENT CENTER  
200 WEST 4<sup>TH</sup> STREET / MADERA, CALIFORNIA 93637  
(559) 675-7700 / FAX (559) 673-3302 / TDD (559) 675-8970  
Agendas available: [www.MaderaCounty.com](http://www.MaderaCounty.com)

Members of the Board

, District 1  
, District 2  
, District 3  
, District 4  
, District 5

## ATTACHMENTS

---

1. Resolution
2. Supervisorial Boundaries Ordinance
3. Draft Maps

BEFORE  
THE BOARD OF SUPERVISORS  
OF THE COUNTY OF MADERA  
STATE OF CALIFORNIA

In the Matter of	)	Resolution No.: <u>2021 - _____</u>
	)	
2021 SUPERVISORIAL BOUNDARY	)	RESOLUTION ADOPTING REVISED
REDISTRICTING	)	BOUNDARIES FOR SUPERVISORIAL
_____	)	DISTRICTS FOLLOWING THE 2020
	)	FEDERAL CENSUS

**WHEREAS**, following each federal decennial census the County of Madera must adopt boundaries for all of the supervisorial districts of the county with any necessary revisions so that the supervisorial districts shall be substantially equal in population as required by the United States Constitution; and

**WHEREAS**, California Elections Code sections 21500 through 21509 set forth the criteria, requirements, procedures and deadlines for the adoption of supervisorial district boundaries following the release of census data on or before December 15, 2021; and

**WHEREAS**, Madera County last adopted boundaries for supervisorial districts by Ordinance No. 520C on February 14, 2012, which are codified in Madera County Municipal Code sections 1.24.010 through 1.24.070; and

**WHEREAS**, Elections Code section 21500 provides that supervisorial districts may be adopted by ordinance or resolution; and

**WHEREAS**, the delay in the release of census data and necessary adjustments by the State of California for the residence of incarcerated persons for purposes of redistricting, and the impending deadlines for conducting the June 7, 2022, primary election, make utilization of the most expeditious and efficient means of adoption of new supervisorial district boundaries by resolution rather than ordinance desirable; and

**WHEREAS**, adoption of supervisorial districts by resolution rather than ordinance further allows additional time for public outreach and input, a vitally important part of the redistricting process; and

**WHEREAS**, the Board of Supervisors is considering Ordinance No. \_\_\_\_\_, amending the Madera County Code section 1.24.010 to provide for adoption of supervisorial district boundaries by resolution, and deleting sections 1.24.020 through 1.24.060 in their entirety.

**NOW, THEREFORE, BE IT RESOLVED** by the Board of Supervisors of the County of Madera, a political subdivision of the State of California, that:

1) The Board of Supervisors held public hearings before and after drawing draft maps as required by Elections Code section 21507.1 as follows:

a) As directed by the Board of Supervisors, County staff and its consultants conducted a series of public hearings and workshops on the redistricting process at which the public was invited to provide input regarding the composition of supervisorial districts;

- 9/7/2021 Board Hearing #1 – 10:30AM Board Chambers, Madera
- 10/12/2021 Board Hearing #2 – 10:30 AM Board Chmabers, Madera
- 10/19/2021 Board Hearing #3 – 6:00PM George Washington Elementary School, Madera
- 10/27/2021 Workshop – 6:00PM Board Chambers, Madera
- 10/30/2021 Workshop – 10:00AM Board Chambers, Madera
- 11/2/2021 Board Hearing #4 – 10:30 AM Board Chambers, Madera

- 11/6/2021 Workshop – Madera Pomegranate Fruit and Nut Festival, Madera
- 11/10/2021 Workshop – 6:00PM Parksdale Village, Madera
- 11/13/2021 Workshop – 10:00AM Board Chambers, Madera
- 11/16/2021 Board Hearing #5 – 6:00PM Chowchilla City Hall, Chowchilla
- 11/17/2021 Workshop – Zoom Town Hall
- 11/17/2021 Workshop – 6:30PM Fairmead Elementary School, Fairmead
- 11/23/2021 Workshop – 5:30PM La Vina, Madera
- 11/30/2021 Workshop – 4:00PM Parksdale Village, Madera
- 12/7/2021 Board Hearing #6 – 10:30AM Board Chambers, Madera[

2) The County took steps to encourage residents, including those in underrepresented communities and non-English speaking communities, to participate in the redistricting public review process by:

- a) Providing information to media organizations,
- b) Making presentations to community groups and organizations,
- c) Arranging for live translations of public meetings and workshops upon request,
- d) Publishing the date, time, and location of all public meetings and workshops on the County website,
- e) Allowing the public to submit testimony and draft maps in writing and electronically.

- 3) Of the alternative maps prepared by County consultants, staff, and the public, the Supervisorial districts set forth in Exhibit A, best meet the criteria in order of priority:
- a) Population Equality within allowed percentage deviation,
  - b) Racial and ethnic balance,
  - c) Geographic contiguity,
  - d) Respect for the integrity of local neighborhoods or communities of interest,
  - e) respect for geographic integrity of cities or census designated places in a manner that minimizes its division,
  - f) Establishes boundaries that are easily identifiable and understandable by residents, following natural and artificial barriers, by streets or the boundaries of the county,
  - g) Does not favor or discriminate against a political party.

**BE IT FURTHER RESOLVED**, the Board of Supervisors hereby adopts the supervisorial district boundaries for each district as depicted on the map in Exhibit A.

**BE IT FURTHER RESOLVED**, the CAO or his designee, along with consultants, are directed to prepare and submit legal descriptions, shapefiles, and other documentation as required by the Clerk/Recorder/Registrar of Voters, and to work with the Clerk/Recorder/Registrar of Voters to conduct any additional acts necessary to complete the redistricting process in a timely fashion to permit implementation of these supervisorial districts.



BE IT FURTHER RESOLVED, that the district boundary descriptions and map shall be posted on the County website.

///

///

///

///

\* \* \* \* \*

The foregoing Resolution was adopted this \_\_\_\_ day of \_\_\_\_\_, 2021, by the following vote:

Supervisor Frazier voted: \_\_\_\_\_

Supervisor Rogers voted: \_\_\_\_\_

Supervisor Poythress voted: \_\_\_\_\_

Supervisor Gonzalez voted: \_\_\_\_\_

Supervisor Wheeler voted: \_\_\_\_\_



\_\_\_\_\_  
Chairman, Board of Supervisors

ATTEST:

\_\_\_\_\_  
Clerk, Board of Supervisors

Approved as to Legal Form:  
COUNTY COUNSEL

Laurie

Avedisian-Favini

By \_\_\_\_\_

Digitally signed by: Laurie Avedisian-Favini  
DN: CN = Laurie Avedisian-Favini  
email = lfavini@lozanosmith.com C = US O = Lozano Smith  
Date: 2021.11.24 14:22:52 -08'00'

**EXHIBIT "A"**

[INSERT MAP SELECTED BY BOARD]



\* \* \* \* \*

The foregoing Ordinance was adopted this \_\_\_\_\_ day of December 2021 by the following vote:

Supervisor Frazier voted: \_\_\_\_\_

Supervisor Rogers voted: \_\_\_\_\_

Supervisor Poythress voted: \_\_\_\_\_

Supervisor Gonzalez voted: \_\_\_\_\_

Supervisor Wheeler voted: \_\_\_\_\_



\_\_\_\_\_  
Chairman, Board of Supervisors

ATTEST:

\_\_\_\_\_  
Clerk, Board of Supervisors

Approved as to Legal Form:

COUNTY COUNSEL

Laurie

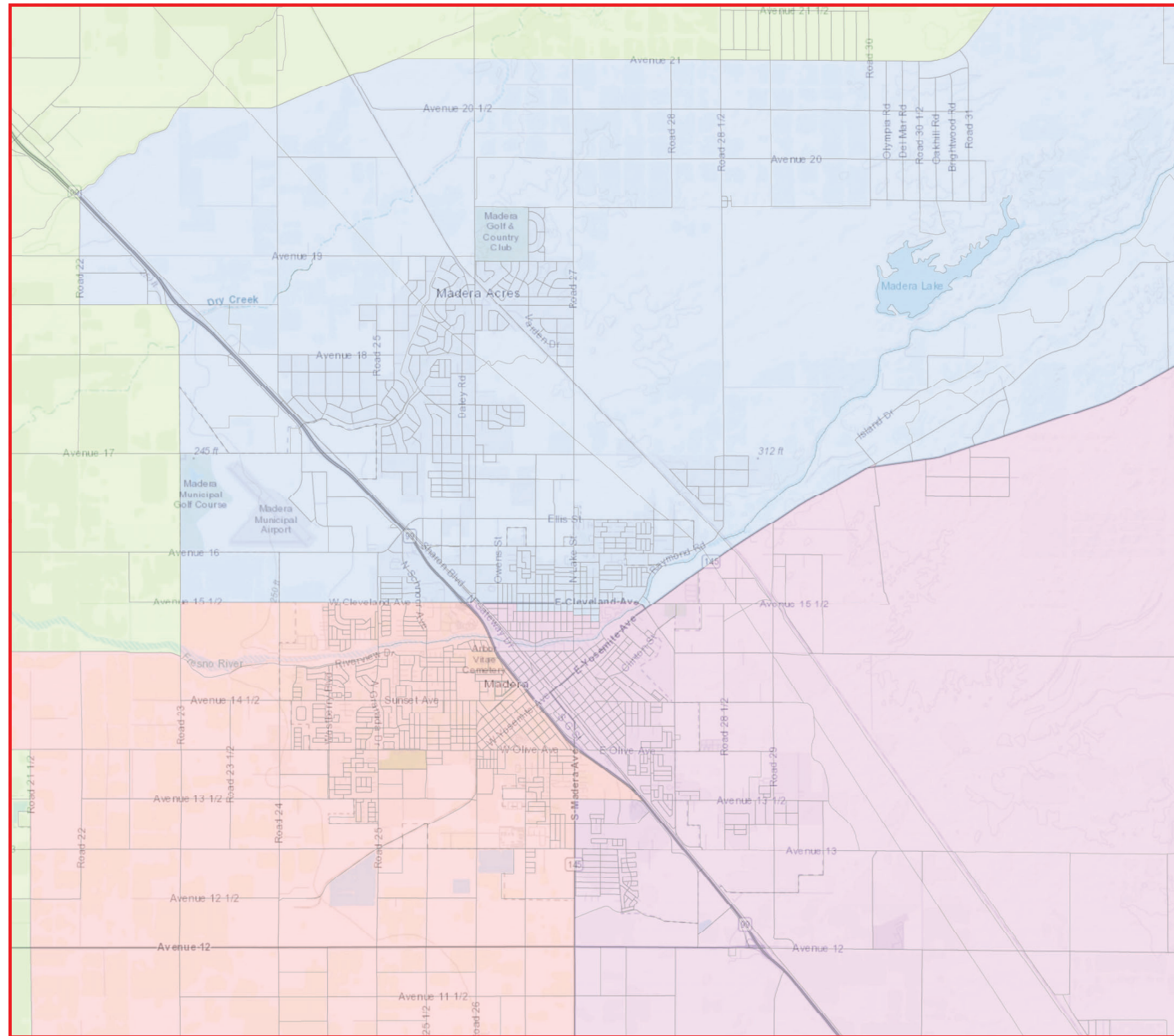
Avedisian-Favini

Digitally signed by: Laurie Avedisian-Favini  
DN: CN = Laurie Avedisian-Favini  
email = lfavini@lozanosmith.com C  
= US O = Lozano Smith  
Date: 2021.11.29 09:10:29 -08'00'

By: \_\_\_\_\_

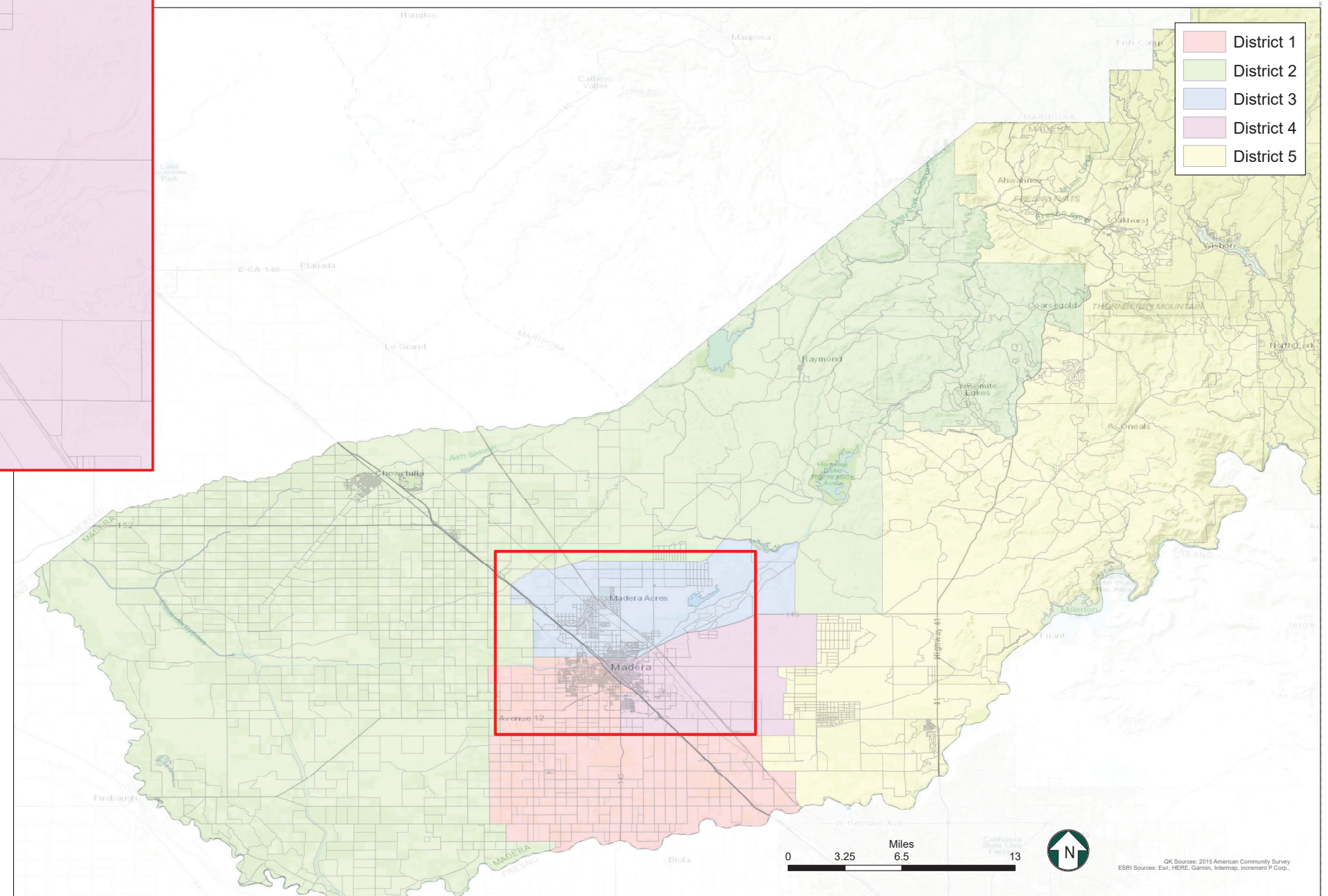
# County of Madera

## Proposed Supervisorial District Boundary Revision



Citizen Voting Age Population  
Map 4

District	Total Population	Hispanic or Latino	Not Hispanic or Latino									
			White Alone	American Indian or Alaska Native Alone	Asian Alone	Black or African American Alone	Native Hawaiian or Other Pacific Islander Alone	American Indian or Alaska Native and White	Asian and White	Black or African American and White	American Indian or Alaska Native and Black or African American	Remainder of Two or More Race Responses
1	16,461	8,694 52.8%	6,299 38.3%	71 0.4%	483 2.9%	600 3.6%	1 0.0%	105 0.6%	27 0.2%	64 0.4%	0 0.0%	71 0.4%
2	18,305	4,957 27.1%	11,946 65.3%	228 1.2%	546 3.0%	162 0.9%	34 0.2%	257 1.4%	37 0.2%	84 0.5%	0 0.0%	31 0.2%
3	15,030	9,701 64.5%	4,205 28.0%	37 0.2%	193 1.3%	493 3.3%	0 0.0%	110 0.7%	4 0.0%	55 0.4%	25 0.2%	93 0.6%
4	13,135	9,295 70.8%	2,269 17.3%	40 0.3%	116 0.9%	1,308 10.0%	0 0.0%	41 0.3%	30 0.2%	0 0.0%	0 0.0%	33 0.3%
5	23,157	4,141 17.9%	17,377 75.0%	529 2.3%	447 1.9%	229 1.0%	4 0.0%	196 0.8%	93 0.4%	60 0.3%	0 0.0%	45 0.2%
<b>Total:</b>	<b>86,088</b>	<b>36,788 42.7%</b>	<b>42,096 48.9%</b>	<b>905 1.1%</b>	<b>1,785 2.1%</b>	<b>2,792 3.2%</b>	<b>39 0.0%</b>	<b>709 0.8%</b>	<b>191 0.2%</b>	<b>263 0.3%</b>	<b>25 0.0%</b>	<b>273 0.3%</b>

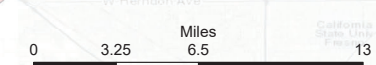


Map 4

District	Total Population	Ideal Population	Deviation from Ideal	Percent Deviation from Ideal
1	30,222	30,223	-1	0.00%
2	30,213	30,223	-10	-0.03%
3	30,234	30,223	11	0.04%
4	30,212	30,223	-11	-0.04%
5	30,232	30,223	9	0.03%
<b>Total:</b>	<b>151,113</b>	<b>151,115</b>		

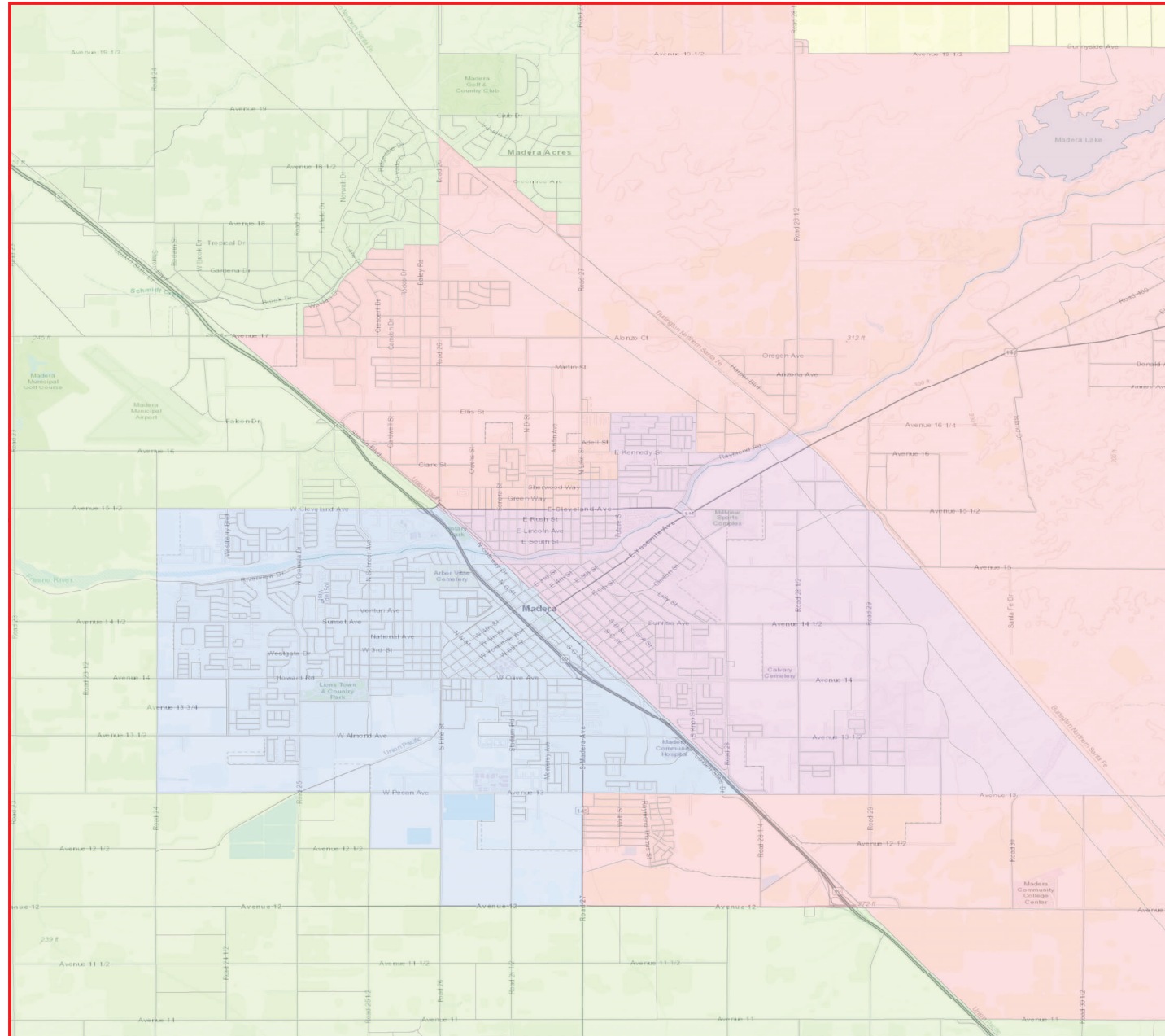
Deviation between Largest and Smallest District 0.1%

Source: U.S. Census Bureau 2020 Decennial Census Data



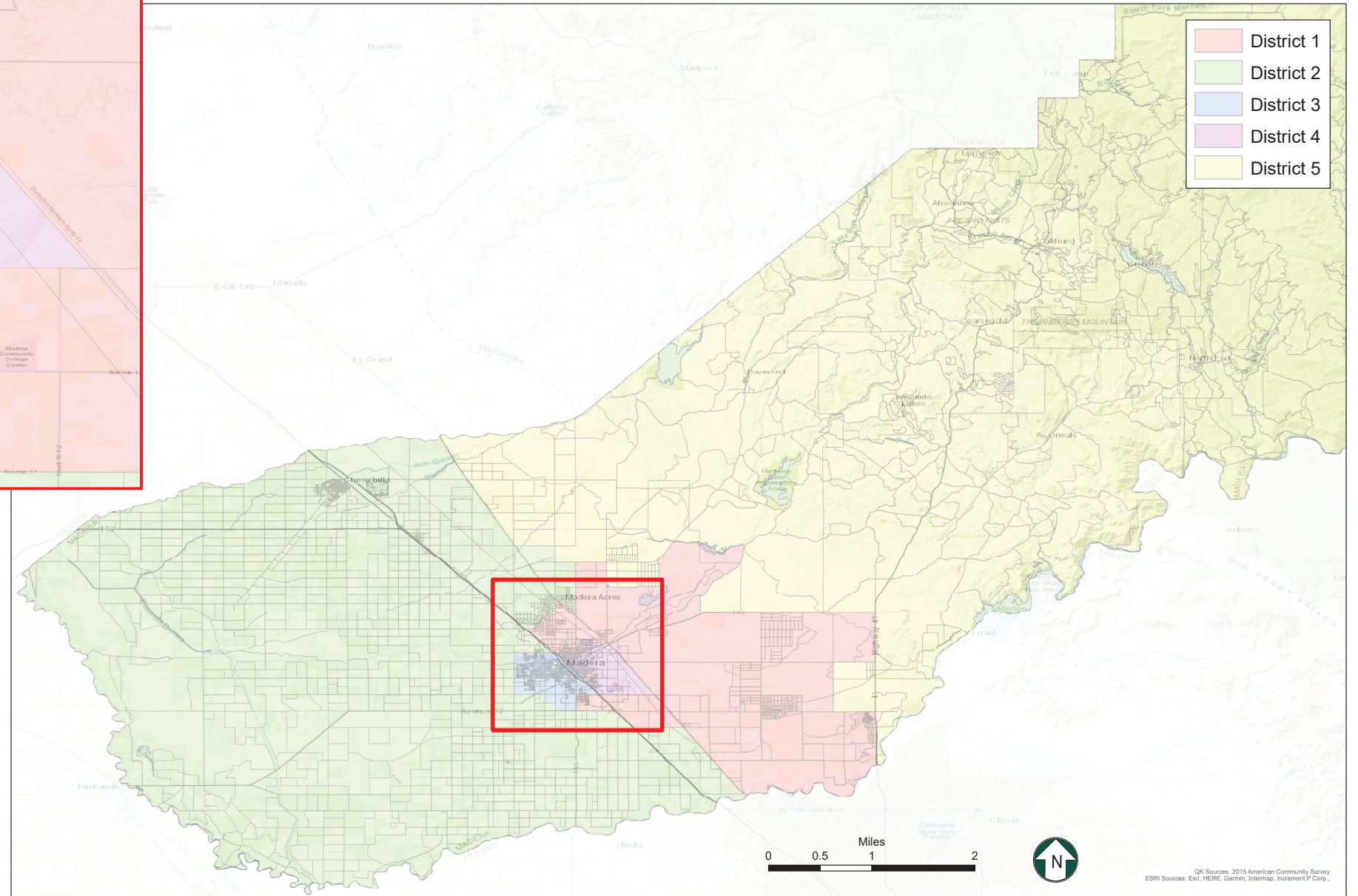
# County of Madera

## Proposed Supervisorial District Boundary Revision



Citizen Voting Age Population  
Map 6

District	Total Population	Hispanic or Latino	Not Hispanic or Latino									
			White Alone	American Indian or Alaska Native Alone	Asian Alone	Black or African American Alone	Native Hawaiian or Other Pacific Islander Alone	American Indian or Alaska Native and White	Asian and White	Black or African American and White	American Indian or Alaska Native and Black or African American	Remainder of Two or More Race Responses
1	18,200	9,464 52.0%	7,213 39.6%	247 1.4%	263 1.4%	719 4.0%	4 0.0%	182 1.0%	27 0.1%	36 0.2%	0 0.0%	47 0.3%
2	15,733	6,580 41.8%	7,687 48.9%	121 0.8%	624 4.0%	276 1.8%	34 0.2%	104 0.7%	1 0.0%	120 0.8%	0 0.0%	54 0.3%
3	16,450	9,040 55.0%	5,834 35.5%	60 0.4%	431 2.6%	802 4.9%	1 0.0%	101 0.6%	33 0.2%	64 0.4%	0 0.0%	71 0.4%
4	11,395	8,192 71.9%	1,970 17.3%	58 0.5%	80 0.7%	848 7.4%	0 0.0%	31 0.3%	0 0.0%	0 0.0%	25 0.2%	56 0.5%
5	24,310	3,512 14.4%	19,392 79.8%	419 1.7%	387 1.6%	147 0.6%	0 0.0%	291 1.2%	130 0.5%	43 0.2%	0 0.0%	45 0.2%
<b>Total:</b>	<b>86,088</b>	<b>36,788 42.7%</b>	<b>42,096 48.9%</b>	<b>905 1.1%</b>	<b>1,785 2.1%</b>	<b>2,792 3.2%</b>	<b>39 0.0%</b>	<b>709 0.8%</b>	<b>191 0.2%</b>	<b>263 0.3%</b>	<b>25 0.0%</b>	<b>273 0.3%</b>



- District 1
- District 2
- District 3
- District 4
- District 5

Map 6

District	Total Population	Ideal Population	Deviation from Ideal	Percent Deviation from Ideal
1	30,225	30,223	2	0.01%
2	30,219	30,223	-4	-0.01%
3	30,228	30,223	5	0.02%
4	30,218	30,223	-5	-0.02%
5	30,223	30,223	0	0.00%
<b>Total:</b>	<b>151,113</b>	<b>151,115</b>		

Deviation between Largest and Smallest District 0.03%

Source: U.S. Census Bureau 2020 Decennial Census Data

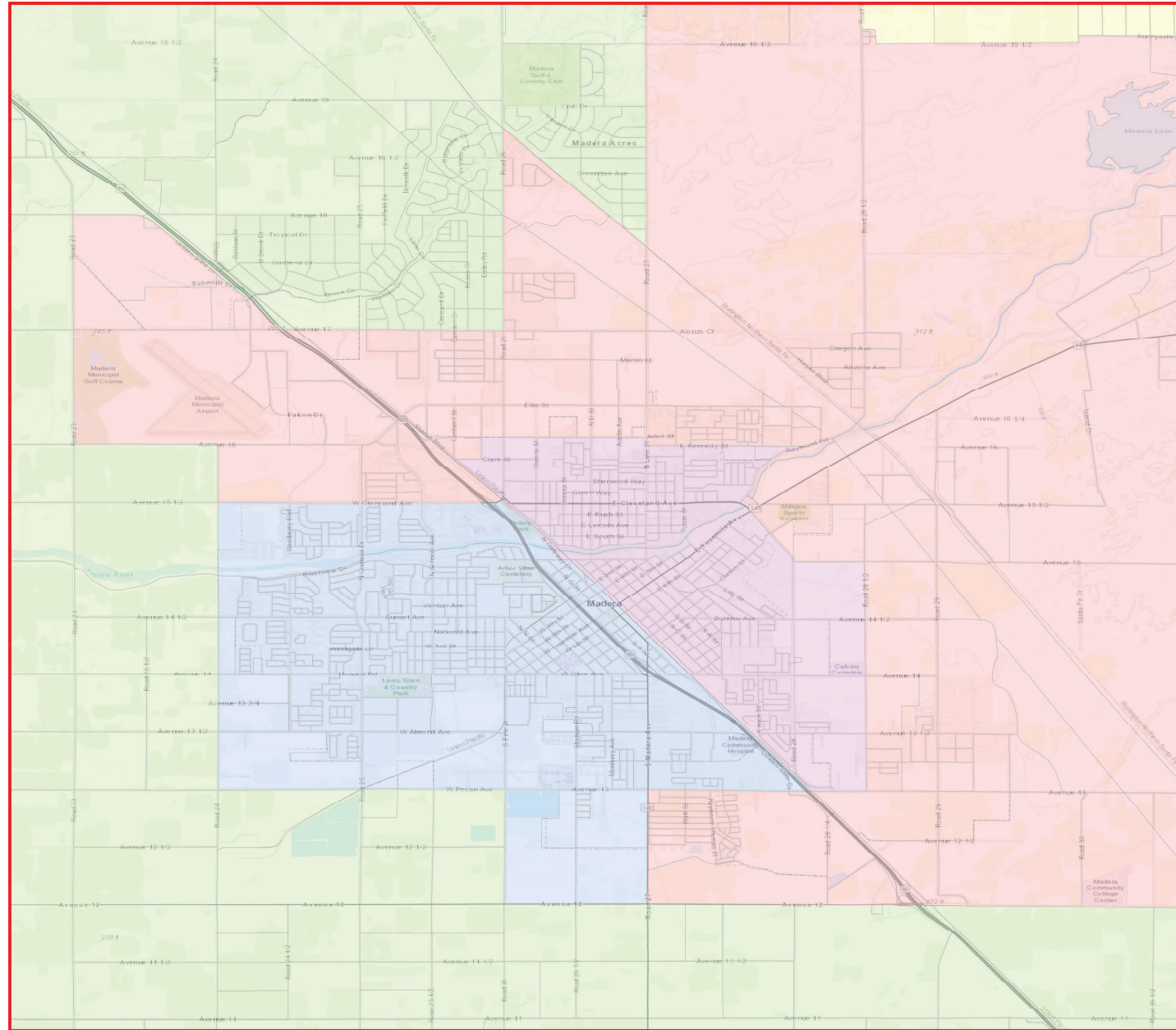
0 0.5 1 2 Miles



OK Sources: 2015 American Community Survey  
ESRI Sources: Esri, HERE, Garmin, Intermap, InCREMENT P Corp.

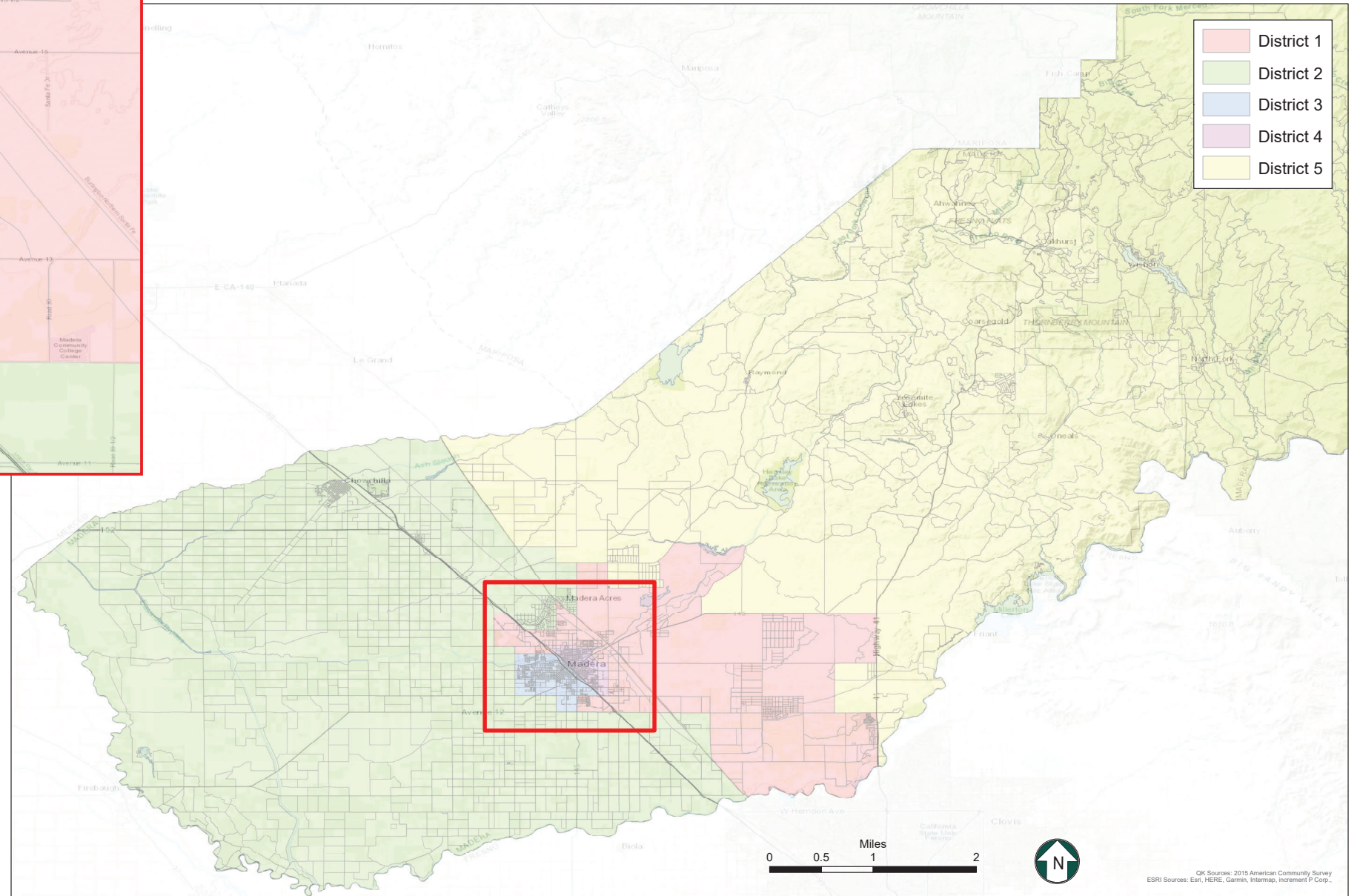
# County of Madera

## Proposed Supervisorial District Boundary Revision



Citizen Voting Age Population  
Map 7

District	Total Population	Hispanic or Latino	Not Hispanic or Latino									
			White Alone	American Indian or Alaska Native Alone	Asian Alone	Black or African American Alone	Native Hawaiian or Other Pacific Islander Alone	American Indian or Alaska Native and White	Asian and White	Black or African American and White	American Indian or Alaska Native and Black or African American	Remainder of Two or More Race Responses
1	18,101	9,120 50.4%	7,308 40.4%	250 1.4%	398 2.2%	673 3.7%	4 0.0%	165 0.9%	23 0.1%	36 0.2%	0 0.0%	31 0.2%
2	15,871	6,762 42.6%	7,731 48.7%	120 0.8%	504 3.2%	296 1.9%	34 0.2%	110 0.7%	1 0.0%	120 0.8%	0 0.0%	61 0.4%
3	16,442	9,040 55.0%	5,824 35.4%	60 0.4%	431 2.6%	802 4.9%	1 0.0%	101 0.6%	33 0.2%	64 0.4%	0 0.0%	71 0.4%
4	11,364	8,354 73.5%	1,841 16.2%	56 0.5%	65 0.6%	874 7.7%	0 0.0%	42 0.4%	4 0.0%	0 0.0%	25 0.2%	65 0.6%
5	24,310	3,512 14.4%	19,392 79.8%	419 1.7%	387 1.6%	147 0.6%	0 0.0%	291 1.2%	130 0.5%	43 0.2%	0 0.0%	45 0.2%
<b>Total:</b>	<b>86,088</b>	<b>36,788 42.7%</b>	<b>42,096 48.9%</b>	<b>905 1.1%</b>	<b>1,785 2.1%</b>	<b>2,792 3.2%</b>	<b>39 0.0%</b>	<b>709 0.8%</b>	<b>191 0.2%</b>	<b>263 0.3%</b>	<b>25 0.0%</b>	<b>273 0.3%</b>



Map 7

District	Total Population	Ideal Population	Deviation from Ideal	Percent Deviation from Ideal
1	30,228	30,223	5	0.02%
2	30,226	30,223	3	0.01%
3	30,216	30,223	-7	-0.02%
4	30,220	30,223	-3	-0.01%
5	30,223	30,223	0	0.00%
<b>Total:</b>	<b>151,113</b>	<b>151,115</b>		

Deviation between Largest and Smallest District 0.04%

Source: U.S. Census Bureau 2020 Decennial Census Data

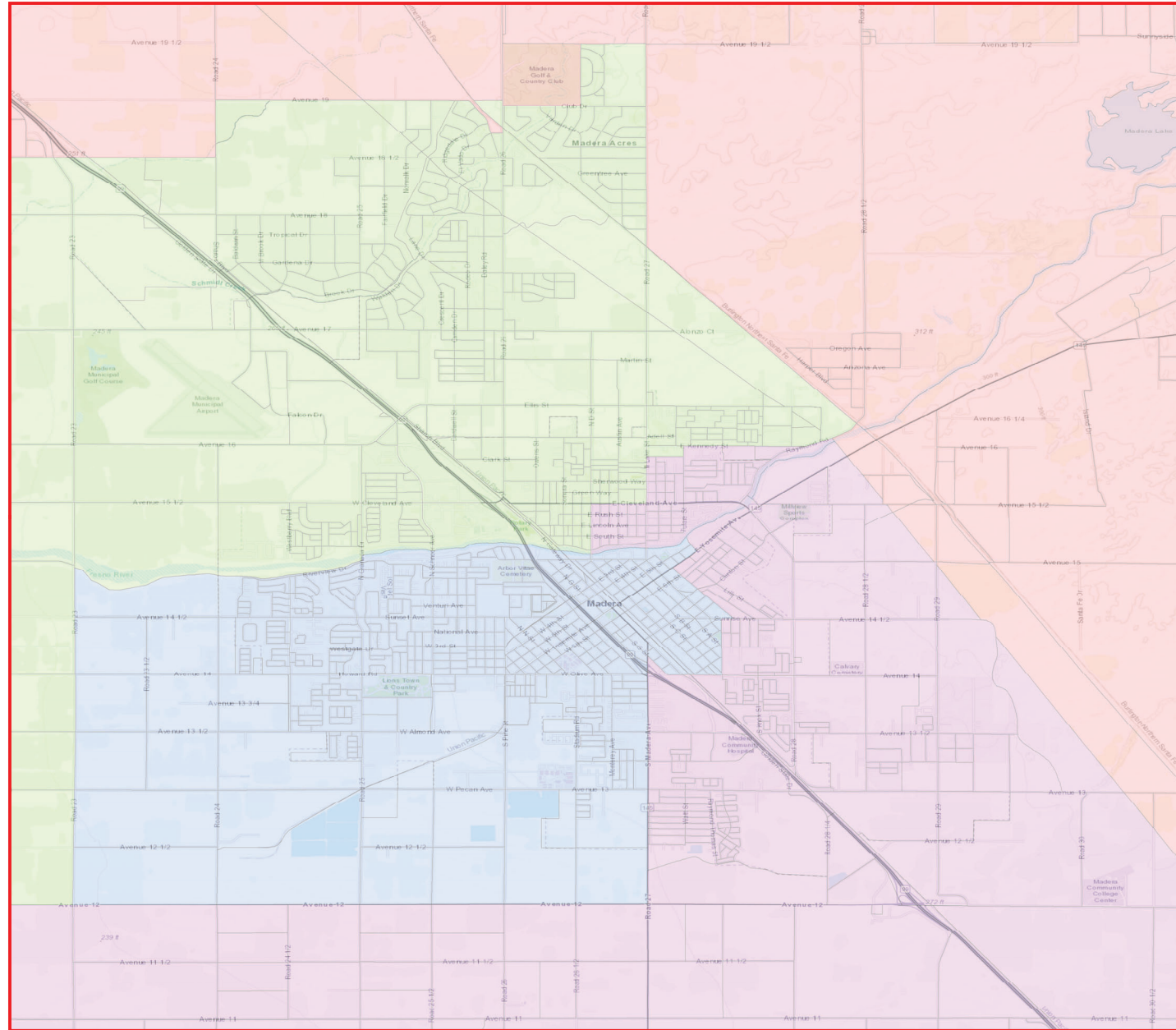
0 0.5 1 2 Miles



OK Sources: 2015 American Community Survey  
ESRI Sources: Esri, HERE, Garmin, Intermap, iPlanet P Corp.

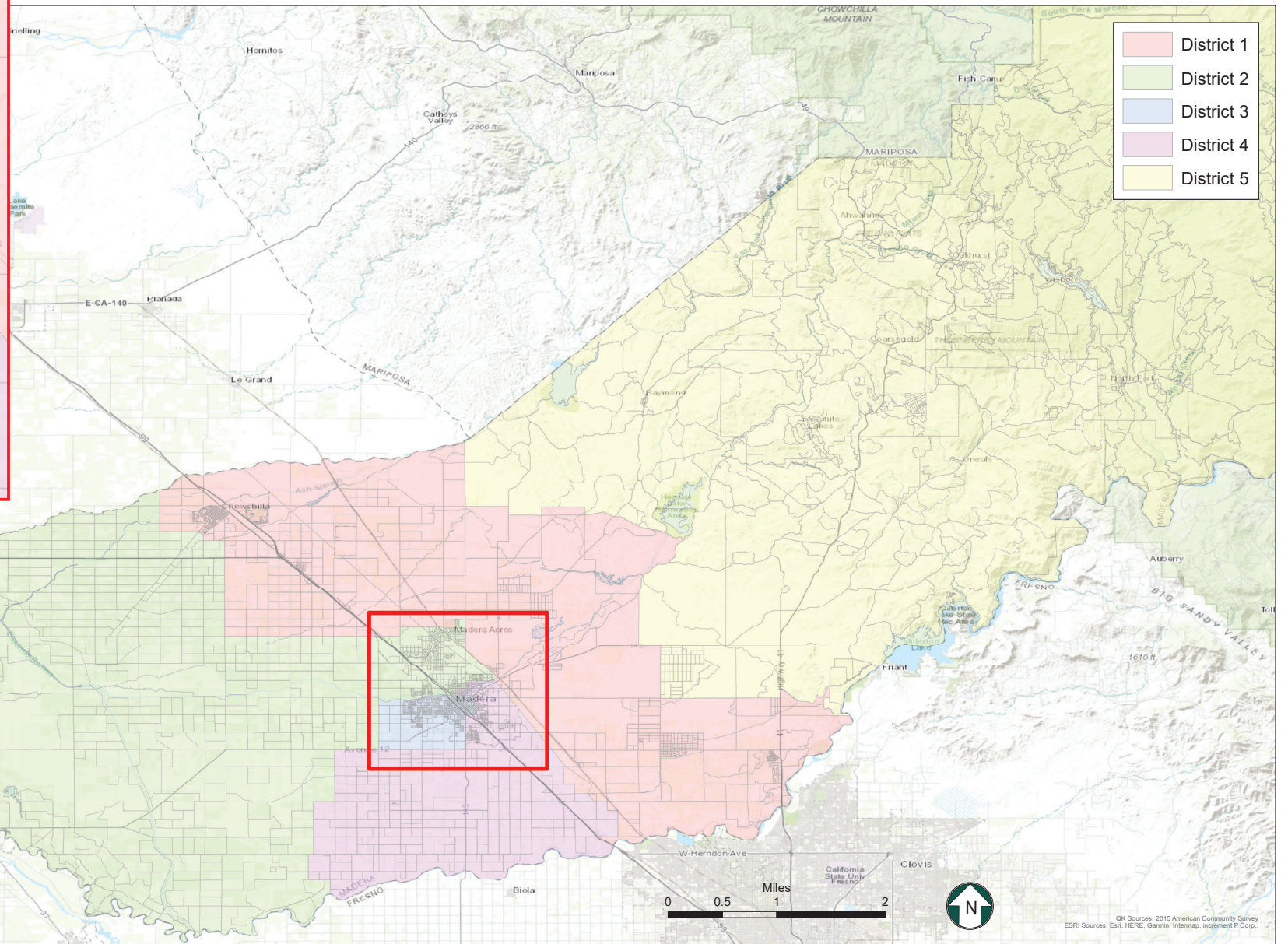
# County of Madera

## Proposed Supervisorial District Boundary Revision



**Citizen Voting Age Population  
Map 11**

District	Total Population	Hispanic or Latino	Not Hispanic or Latino									
			White Alone	American Indian or Alaska Native Alone	Asian Alone	Black or African American Alone	Native Hawaiian or Other Pacific Islander Alone	American Indian or Alaska Native and White	Asian and White	Black or African American and White	American Indian or Alaska Native and Black or African American	Remainder of Two or More Responses
1	17,517	6,377 36.4%	9,615 54.9%	248 1.4%	508 2.9%	301 1.7%	35 0.2%	254 1.5%	4 0.0%	101 0.6%	0 0.0%	48 0.3%
2	15,135	9,074 60.0%	4,836 32.0%	37 0.2%	527 3.5%	386 2.6%	3 0.0%	108 0.7%	6 0.0%	67 0.4%	0 0.0%	58 0.4%
3	15,437	8,890 57.6%	5,356 34.7%	57 0.4%	162 1.0%	682 4.4%	1 0.0%	120 0.8%	25 0.2%	52 0.3%	0 0.0%	69 0.4%
4	13,558	9,195 67.8%	2,661 19.6%	65 0.5%	141 1.0%	1,277 9.4%	0 0.0%	13 0.1%	30 0.2%	0 0.0%	25 0.2%	56 0.4%
5	24,441	3,252 13.3%	19,628 80.3%	498 2.0%	447 1.8%	146 0.6%	0 0.0%	214 0.9%	126 0.5%	43 0.2%	0 0.0%	42 0.2%
<b>Total:</b>	<b>86,088</b>	<b>36,788 42.7%</b>	<b>42,096 48.9%</b>	<b>905 1.1%</b>	<b>1,785 2.1%</b>	<b>2,792 3.2%</b>	<b>39 0.0%</b>	<b>709 0.8%</b>	<b>191 0.2%</b>	<b>263 0.3%</b>	<b>25 0.0%</b>	<b>273 0.3%</b>



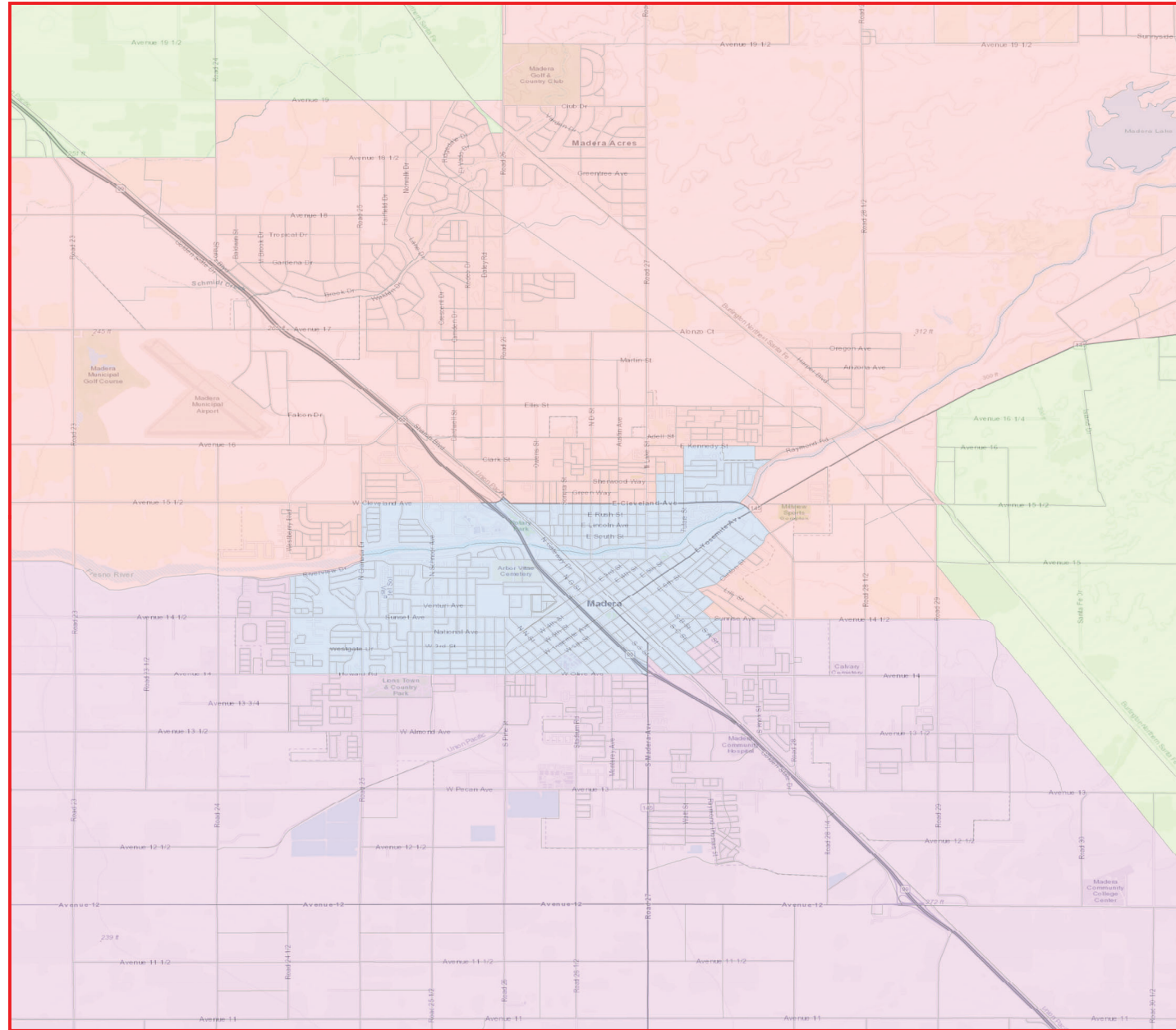
**Map 11**

District	Total Population	Ideal Population	Deviation from Ideal	Percent Deviation from Ideal
1	30,224	30,223	1	0.00%
2	30,144	30,223	-79	-0.26%
3	30,301	30,223	78	0.26%
4	30,223	30,223	0	0.00%
5	30,221	30,223	-2	-0.01%
<b>Total:</b>	<b>151,113</b>	<b>151,115</b>		

Deviation between Largest and Smallest District 0.52%

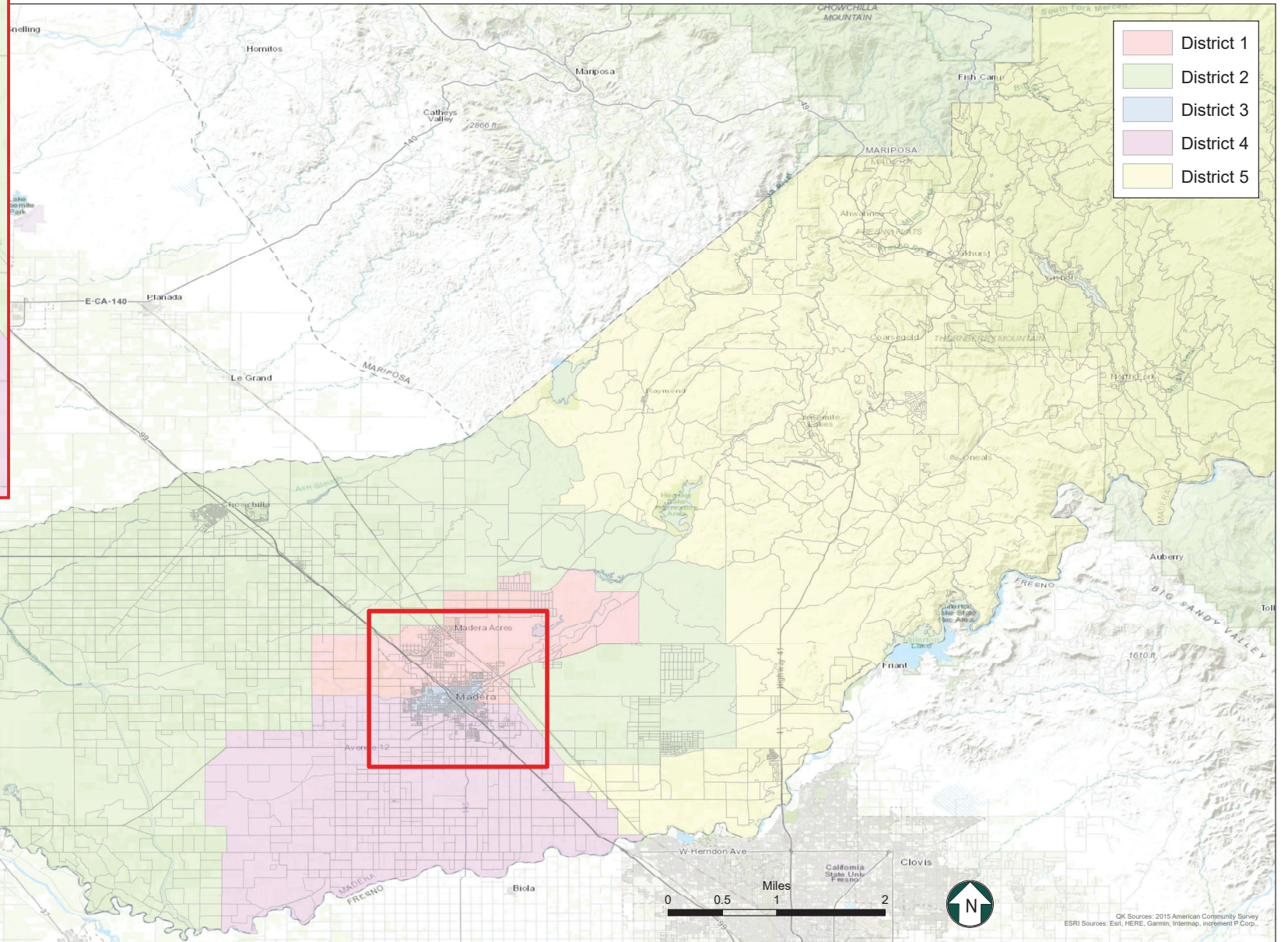
Source: U.S. Census Bureau 2020 Decennial Census Data





**Citizen Voting Age Population**  
Map 12

District	Total Population	Hispanic or Latino	Not Hispanic or Latino									
			White Alone	American Indian or Alaska Native Alone	Asian Alone	Black or African American Alone	Native Hawaiian or Other Pacific Islander Alone	American Indian or Alaska Native and White	Asian and White	Black or African American and White	American Indian or Alaska Native and Black or African American	Remainder of Two or More Race Responses
1	15,594	9,772 62.7%	4,452 28.5%	17 0.1%	422 2.7%	602 3.9%	0 0.0%	119 0.8%	4 0.0%	55 0.4%	0 0.0%	76 0.5%
2	17,532	6,075 34.7%	9,914 56.5%	345 2.0%	596 3.4%	230 1.3%	36 0.2%	222 1.3%	4 0.0%	101 0.6%	0 0.0%	21 0.1%
3	14,373	8,603 59.9%	4,667 32.5%	83 0.6%	197 1.4%	606 4.2%	0 0.0%	91 0.6%	13 0.1%	64 0.4%	25 0.2%	91 0.6%
4	14,536	9,397 64.6%	3,465 23.8%	48 0.3%	158 1.1%	1,168 8.0%	1 0.0%	36 0.2%	44 0.3%	0 0.0%	0 0.0%	30 0.2%
5	24,053	2,941 12.2%	19,598 81.5%	412 1.7%	412 1.7%	186 0.8%	2 0.0%	241 1.0%	126 0.5%	43 0.2%	0 0.0%	55 0.2%
<b>Total:</b>	<b>86,088</b>	<b>36,788 42.7%</b>	<b>42,096 48.9%</b>	<b>905 1.1%</b>	<b>1,785 2.1%</b>	<b>2,792 3.2%</b>	<b>39 0.0%</b>	<b>709 0.8%</b>	<b>191 0.2%</b>	<b>263 0.3%</b>	<b>25 0.0%</b>	<b>273 0.3%</b>



- District 1
- District 2
- District 3
- District 4
- District 5

**Map 12**

District	Total Population	Ideal Population	Deviation from Ideal	Percent Deviation from Ideal
1	30,216	30,223	-7	-0.02%
2	30,200	30,223	-23	-0.08%
3	30,234	30,223	11	0.04%
4	30,240	30,223	17	0.06%
5	30,223	30,223	0	0.00%
<b>Total:</b>	<b>151,113</b>	<b>151,115</b>		

Deviation between Largest and Smallest District 0.13%

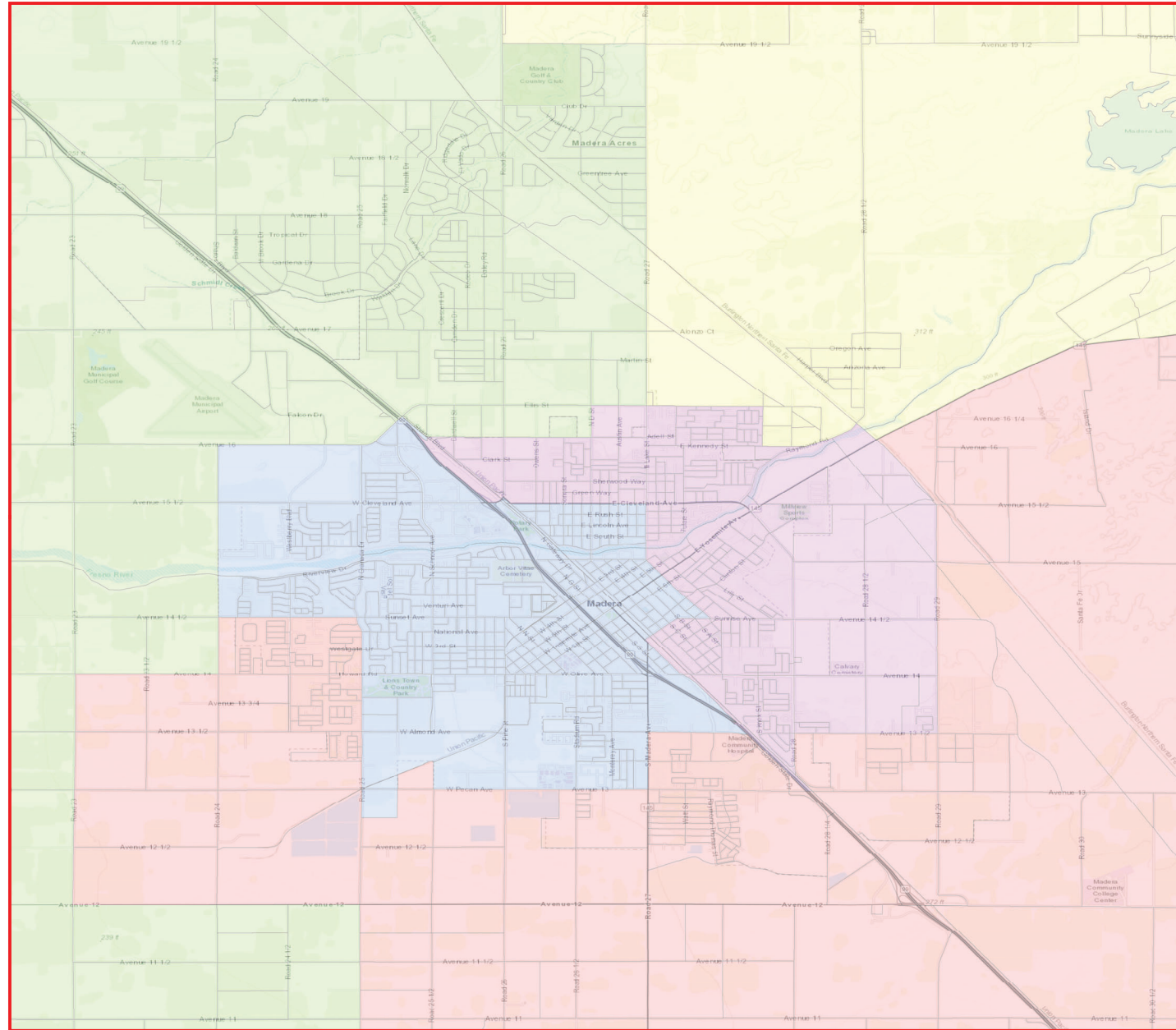
Source: U.S. Census Bureau 2020 Decennial Census Data

Miles 0 0.5 1 2

OK Sources: 2015 American Community Survey  
ESRI Sources: Esri, HERE, Garmin, Intermap, iPoint P Corp.

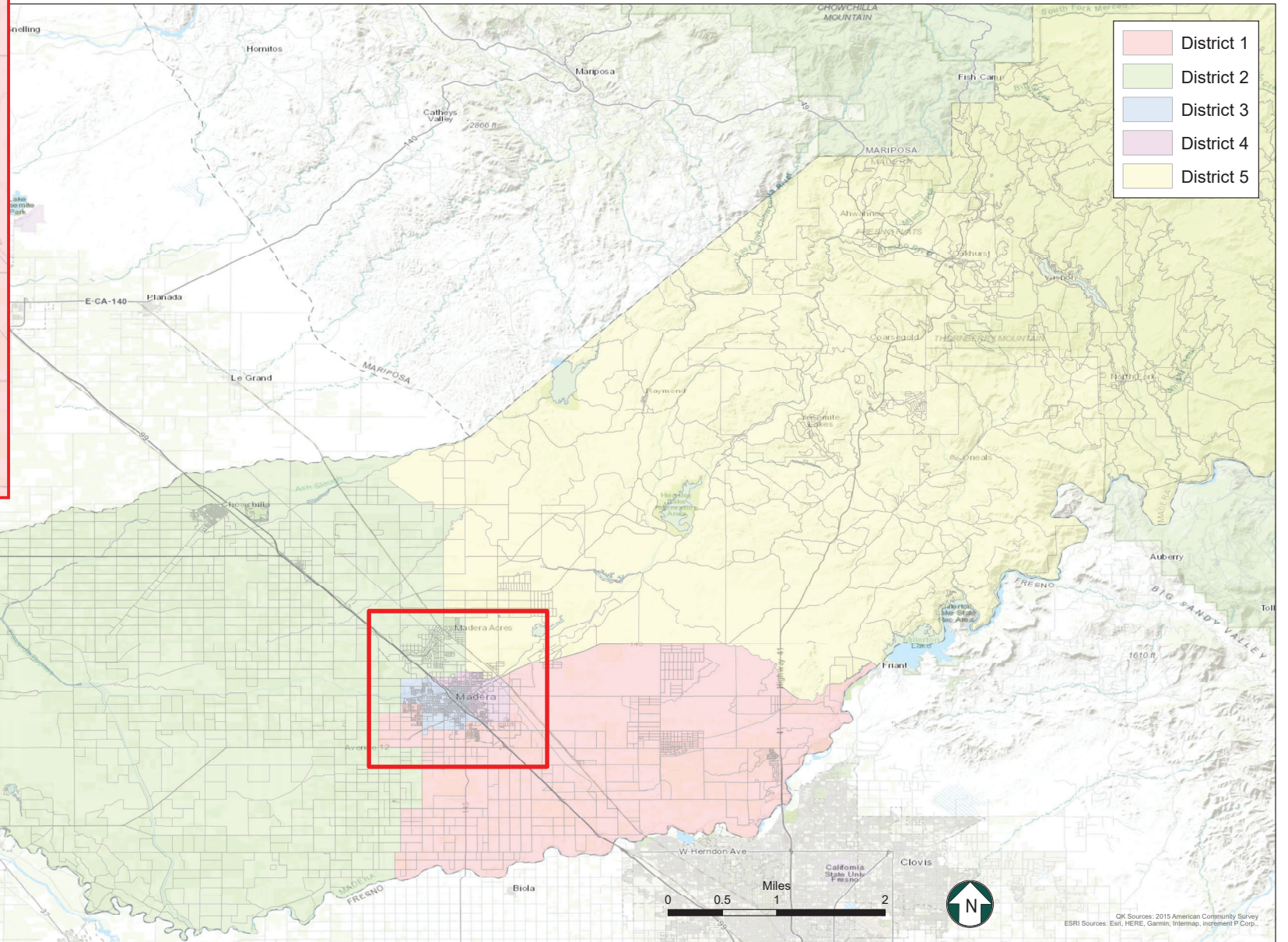
# County of Madera

## Proposed Supervisorial District Boundary Revision



**Citizen Voting Age Population  
Map 13**

District	Total Population	Hispanic or Latino	Not Hispanic or Latino									
			White Alone	American Indian or Alaska Native Alone	Asian Alone	Black or African American Alone	Native Hawaiian or Other Pacific Islander Alone	American Indian or Alaska Native and White	Asian and White	Black or African American and White	American Indian or Alaska Native and Black or African American	Remainder of Two or More Race Responses
1	17,811	8,007 45.0%	7,890 44.3%	274 1.5%	319 1.8%	972 5.5%	5 0.0%	190 1.1%	49 0.3%	36 0.2%	0 0.0%	51 0.3%
2	17,417	8,145 46.8%	7,846 45.0%	107 0.6%	486 2.8%	327 1.9%	34 0.2%	206 1.2%	0 0.0%	120 0.7%	0 0.0%	69 0.4%
3	14,892	8,737 58.7%	5,055 33.9%	68 0.5%	551 3.7%	383 2.6%	0 0.0%	56 0.4%	8 0.1%	64 0.4%	0 0.0%	37 0.2%
4	11,420	8,113 71.0%	1,897 16.6%	50 0.4%	80 0.7%	927 8.1%	0 0.0%	37 0.3%	4 0.0%	0 0.0%	25 0.2%	72 0.6%
5	24,548	3,786 15.4%	19,408 79.1%	406 1.7%	349 1.4%	183 0.7%	0 0.0%	220 0.9%	130 0.5%	43 0.2%	0 0.0%	44 0.2%
<b>Total:</b>	<b>86,088</b>	<b>36,788 42.7%</b>	<b>42,096 48.9%</b>	<b>905 1.1%</b>	<b>1,785 2.1%</b>	<b>2,792 3.2%</b>	<b>39 0.0%</b>	<b>709 0.8%</b>	<b>191 0.2%</b>	<b>263 0.3%</b>	<b>25 0.0%</b>	<b>273 0.3%</b>



- District 1
- District 2
- District 3
- District 4
- District 5

**Map 13**

District	Total Population	Ideal Population	Deviation from Ideal	Percent Deviation from Ideal
1	28,897	30,223	-1,326	-4.39%
2	31,830	30,223	1,607	5.32%
3	29,532	30,223	-691	-2.29%
4	29,588	30,223	-635	-2.10%
5	31,266	30,223	1,043	3.45%
<b>Total:</b>	<b>151,113</b>	<b>151,115</b>		

Deviation between Largest and Smallest District 9.70%

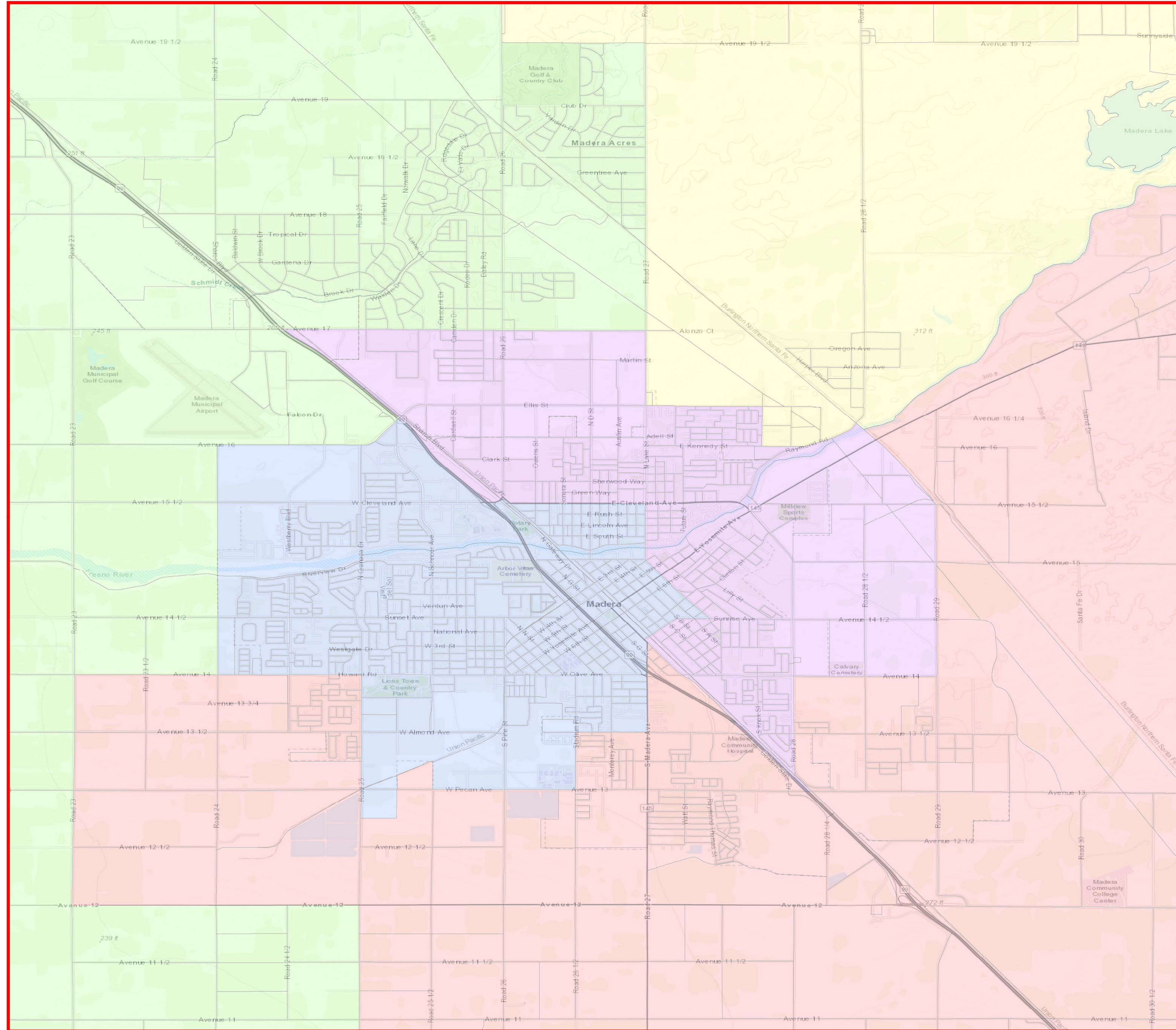
Source: U.S. Census Bureau 2020 Decennial Census Data



OK Sources: 2015 American Community Survey  
ESRI Sources: Esri, HERE, Garmin, Intermap, Inetmap P Corp.

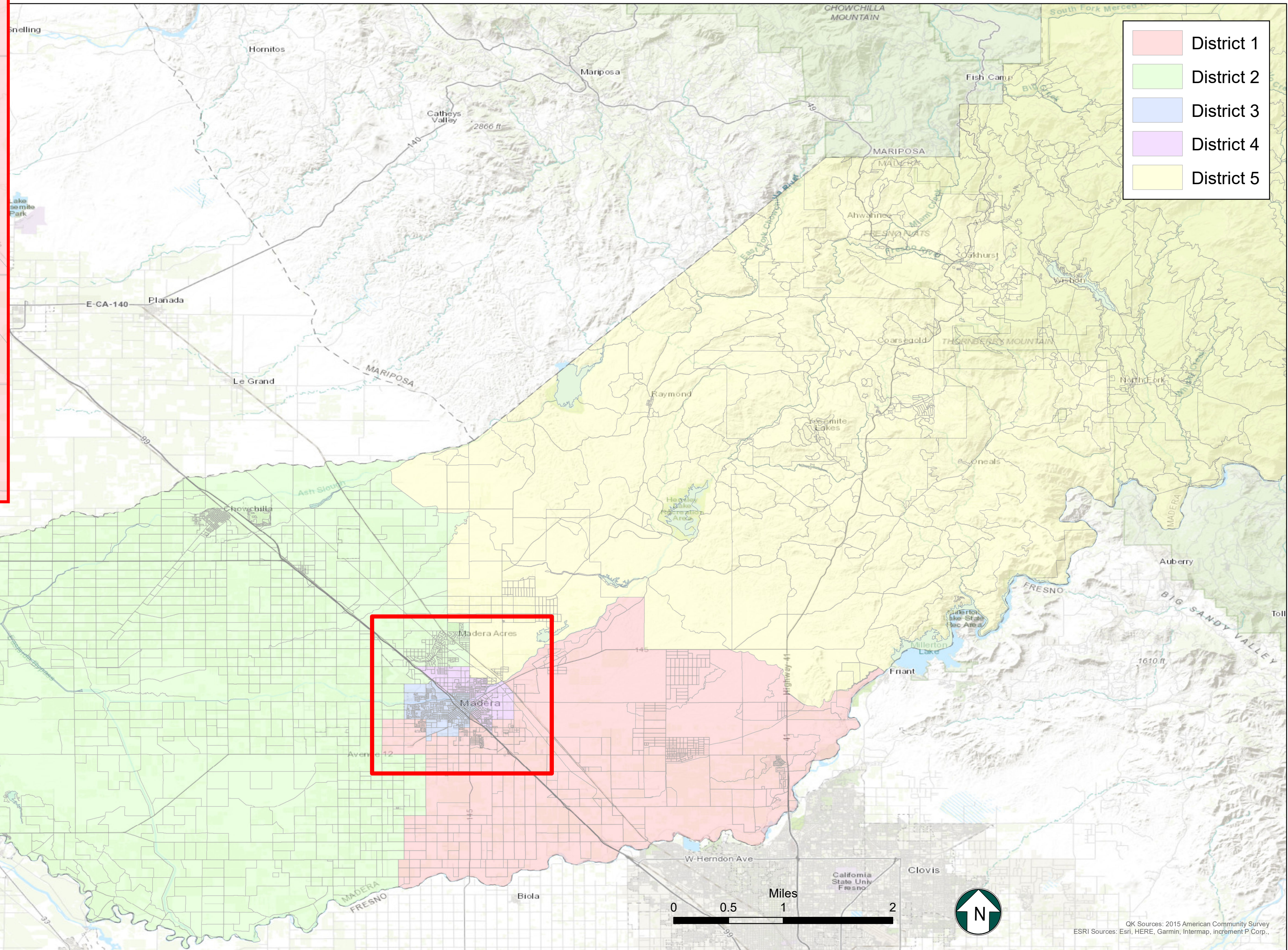
# County of Madera

## Proposed Supervisorial District Boundary Revision



Citizen Voting Age Population  
Map 14

District	Total Population	Hispanic or Latino	Not Hispanic or Latino									
			White Alone	American Indian or Alaska Native Alone	Asian Alone	Black or African American Alone	Native Hawaiian or Other Pacific Islander Alone	American Indian or Alaska Native and White	Asian and White	Black or African American and White	American Indian or Alaska Native and Black or African American	Remainder of Two or More Race Responses
1	18,158	8,718 48.0%	7,588 41.8%	274 1.5%	331 1.8%	981 5.4%	4 0.0%	125 0.7%	34 0.2%	36 0.2%	0 0.0%	17 0.1%
2	15,869	7,077 44.6%	7,456 47.0%	107 0.7%	458 2.9%	297 1.9%	34 0.2%	177 1.1%	0 0.0%	120 0.8%	0 0.0%	66 0.4%
3	15,314	8,538 55.8%	5,535 36.1%	68 0.4%	539 3.5%	393 2.6%	1 0.0%	121 0.8%	23 0.2%	64 0.4%	0 0.0%	71 0.5%
4	12,436	8,765 70.5%	2,231 17.9%	50 0.4%	108 0.9%	938 7.5%	0 0.0%	66 0.5%	4 0.0%	0 0.0%	25 0.2%	75 0.6%
5	24,311	3,690 15.2%	19,286 79.3%	406 1.7%	349 1.4%	183 0.8%	0 0.0%	220 0.9%	130 0.5%	43 0.2%	0 0.0%	44 0.2%
<b>Total:</b>	<b>86,088</b>	<b>36,788 42.7%</b>	<b>42,096 48.9%</b>	<b>905 1.1%</b>	<b>1,785 2.1%</b>	<b>2,792 3.2%</b>	<b>39 0.0%</b>	<b>709 0.8%</b>	<b>191 0.2%</b>	<b>263 0.3%</b>	<b>25 0.0%</b>	<b>273 0.3%</b>



Map 14

District	Total Population	Ideal Population	Deviation from Ideal	Percent Deviation from Ideal
1	30,586	30,223	363	1.20%
2	29,792	30,223	-431	-1.43%
3	29,561	30,223	-662	-2.19%
4	30,264	30,223	41	0.14%
5	30,910	30,223	687	2.27%
<b>Total:</b>	<b>151,113</b>	<b>151,115</b>		

Deviation between Largest and Smallest District 4.46%

Source: U.S. Census Bureau 2020 Decennial Census Data