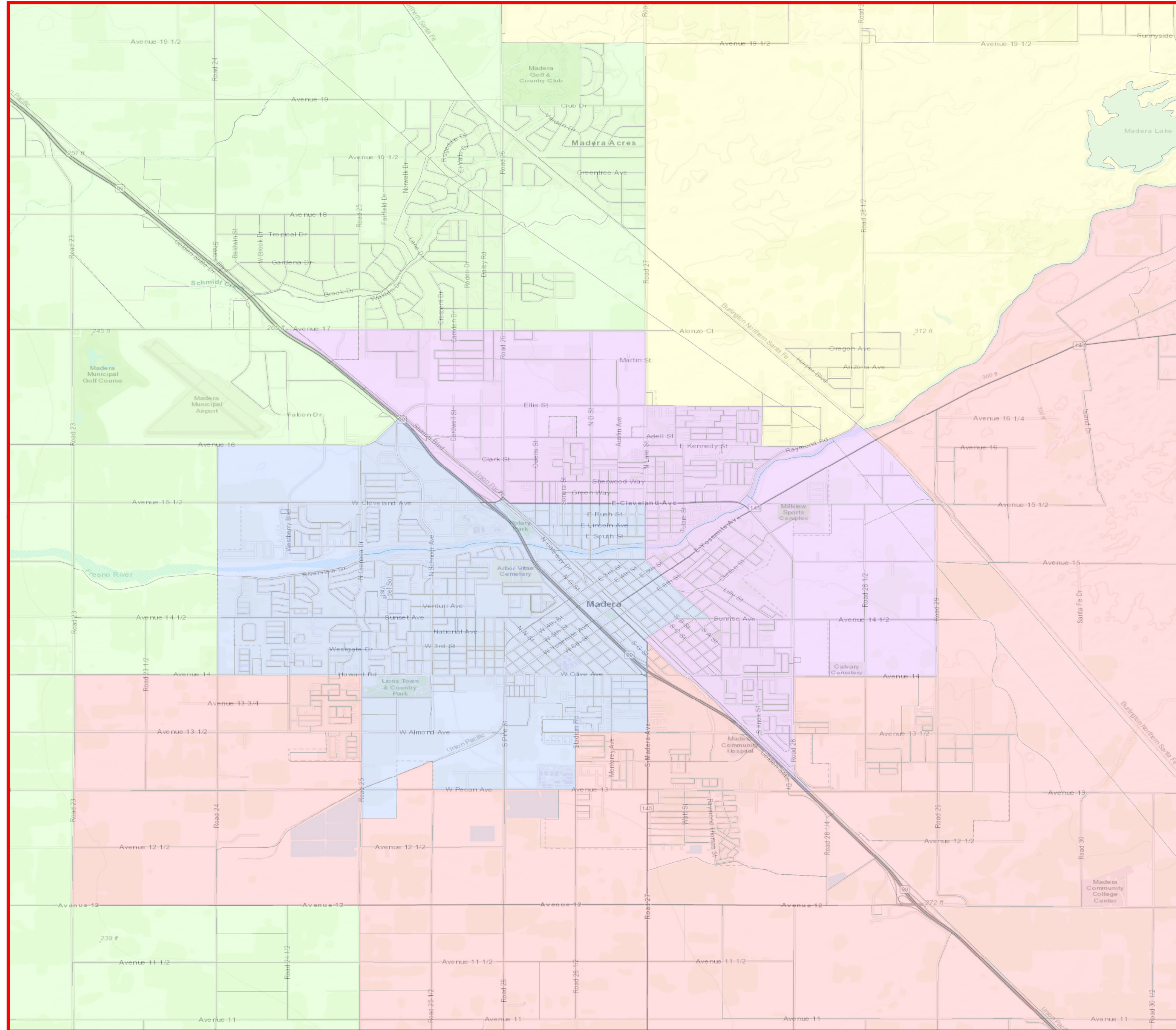


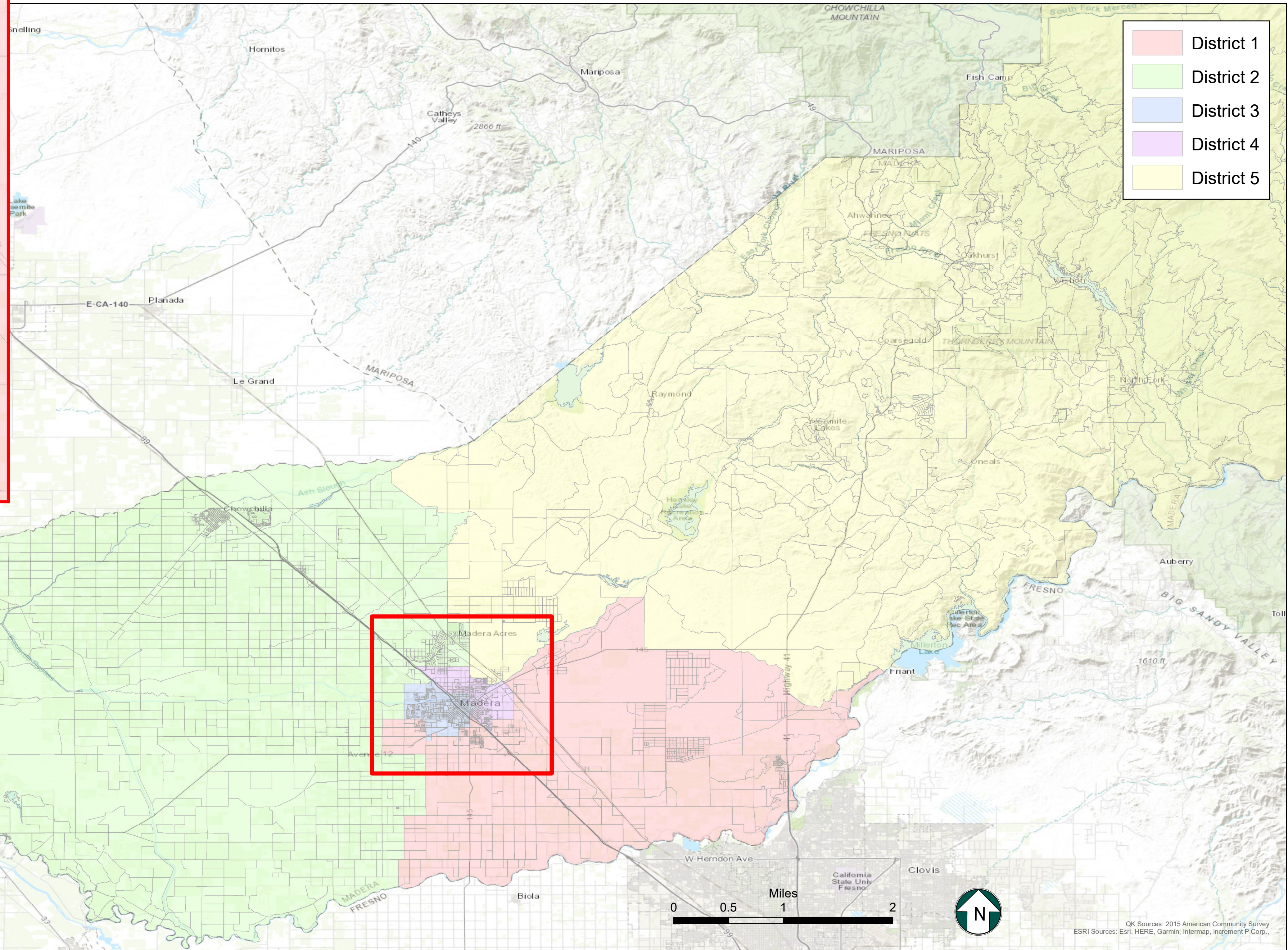
County of Madera

Proposed Supervisorial District Boundary Revision



Citizen Voting Age Population
Map 14

District	Total Population	Hispanic or Latino	Not Hispanic or Latino									
			White Alone	American Indian or Alaska Native Alone	Asian Alone	Black or African American Alone	Native Hawaiian or Other Pacific Islander Alone	American Indian or Alaska Native and White	Asian and White	Black or African American and White	American Indian or Alaska Native and Black or African American	Remainder of Two or More Race Responses
1	18,158	8,718 48.0%	7,588 41.8%	274 1.5%	331 1.8%	981 5.4%	4 0.0%	125 0.7%	34 0.2%	36 0.2%	0 0.0%	17 0.1%
2	15,869	7,077 44.6%	7,456 47.0%	107 0.7%	458 2.9%	297 1.9%	34 0.2%	177 1.1%	0 0.0%	120 0.8%	0 0.0%	66 0.4%
3	15,314	8,538 55.8%	5,535 36.1%	68 0.4%	539 3.5%	393 2.6%	1 0.0%	121 0.8%	23 0.2%	64 0.4%	0 0.0%	71 0.5%
4	12,436	8,765 70.5%	2,231 17.9%	50 0.4%	108 0.9%	938 7.5%	0 0.0%	66 0.5%	4 0.0%	0 0.0%	25 0.2%	75 0.6%
5	24,311	3,690 15.2%	19,286 79.3%	406 1.7%	349 1.4%	183 0.8%	0 0.0%	220 0.9%	130 0.5%	43 0.2%	0 0.0%	44 0.2%
Total:	86,088	36,788 42.7%	42,096 48.9%	905 1.1%	1,785 2.1%	2,792 3.2%	39 0.0%	709 0.8%	191 0.2%	263 0.3%	25 0.0%	273 0.3%



Map 14

District	Total Population	Ideal Population	Deviation from Ideal	Percent Deviation from Ideal
1	30,586	30,223	363	1.20%
2	29,792	30,223	-431	-1.43%
3	29,561	30,223	-662	-2.19%
4	30,264	30,223	41	0.14%
5	30,910	30,223	687	2.27%
Total:	151,113	151,115		

Deviation between Largest and Smallest District 4.46%

Source: U.S. Census Bureau 2020 Decennial Census Data