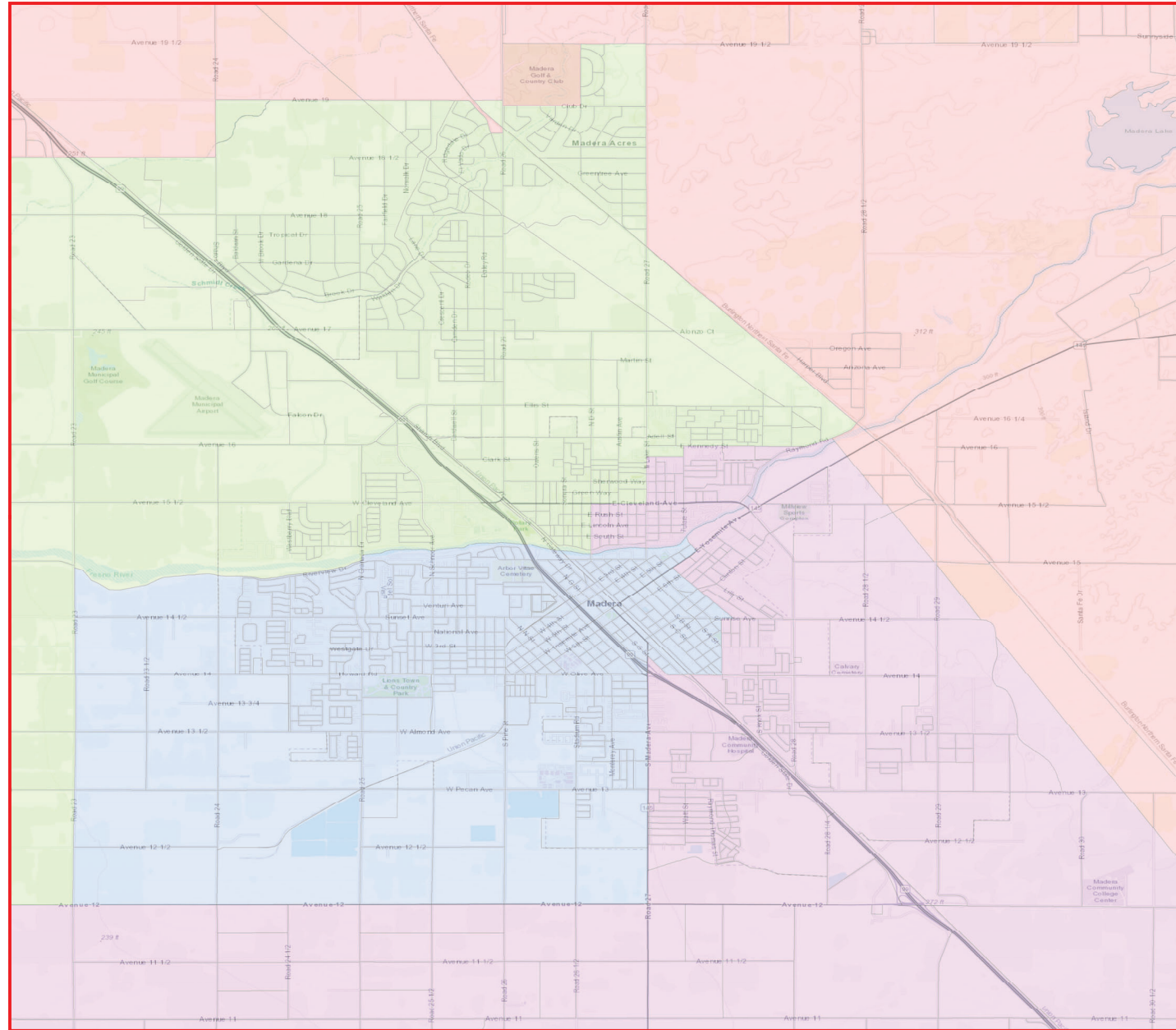


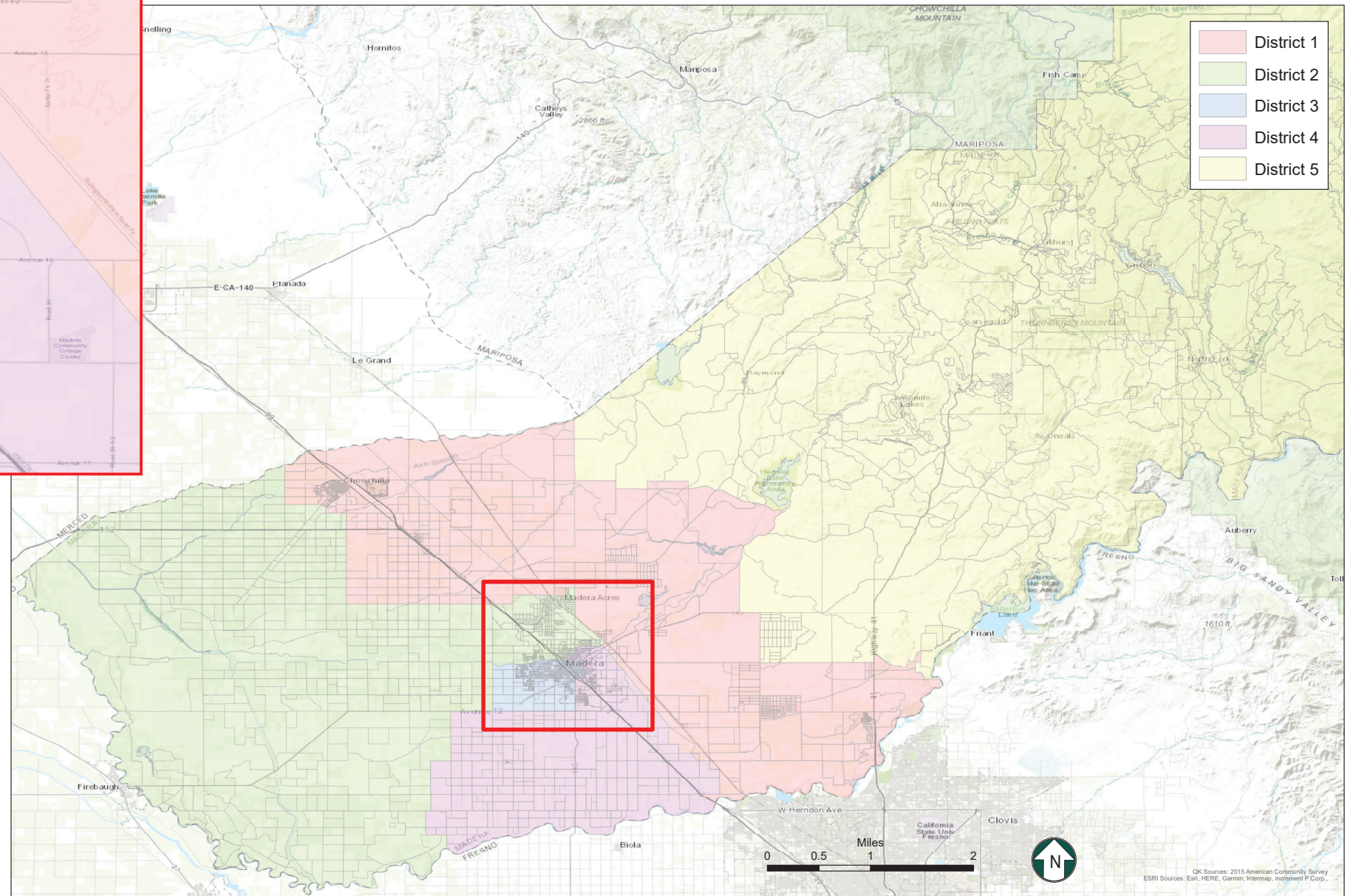
County of Madera

Proposed Supervisorial District Boundary Revision



**Citizen Voting Age Population
Map 11**

District	Total Population	Hispanic or Latino	Not Hispanic or Latino									
			White Alone	American Indian or Alaska Native Alone	Asian Alone	Black or African American Alone	Native Hawaiian or Other Pacific Islander Alone	American Indian or Alaska Native and White	Asian and White	Black or African American and White	American Indian or Alaska Native and Black or African American	Remainder of Two or More Responses
1	17,517	6,377 36.4%	9,615 54.9%	248 1.4%	508 2.9%	301 1.7%	35 0.2%	254 1.5%	4 0.0%	101 0.6%	0 0.0%	48 0.3%
2	15,135	9,074 60.0%	4,836 32.0%	37 0.2%	527 3.5%	386 2.6%	3 0.0%	108 0.7%	6 0.0%	67 0.4%	0 0.0%	58 0.4%
3	15,437	8,890 57.6%	5,356 34.7%	57 0.4%	162 1.0%	682 4.4%	1 0.0%	120 0.8%	25 0.2%	52 0.3%	0 0.0%	69 0.4%
4	13,558	9,195 67.8%	2,661 19.6%	65 0.5%	141 1.0%	1,277 9.4%	0 0.0%	13 0.1%	30 0.2%	0 0.0%	25 0.2%	56 0.4%
5	24,441	3,252 13.3%	19,628 80.3%	498 2.0%	447 1.8%	146 0.6%	0 0.0%	214 0.9%	126 0.5%	43 0.2%	0 0.0%	42 0.2%
Total:	86,088	36,788 42.7%	42,096 48.9%	905 1.1%	1,785 2.1%	2,792 3.2%	39 0.0%	709 0.8%	191 0.2%	263 0.3%	25 0.0%	273 0.3%



Map 11

District	Total Population	Ideal Population	Deviation from Ideal	Percent Deviation from Ideal
1	30,224	30,223	1	0.00%
2	30,144	30,223	-79	-0.26%
3	30,301	30,223	78	0.26%
4	30,223	30,223	0	0.00%
5	30,221	30,223	-2	-0.01%
Total:	151,113	151,115		

Deviation between Largest and Smallest District 0.52%

Source: U.S. Census Bureau 2020 Decennial Census Data