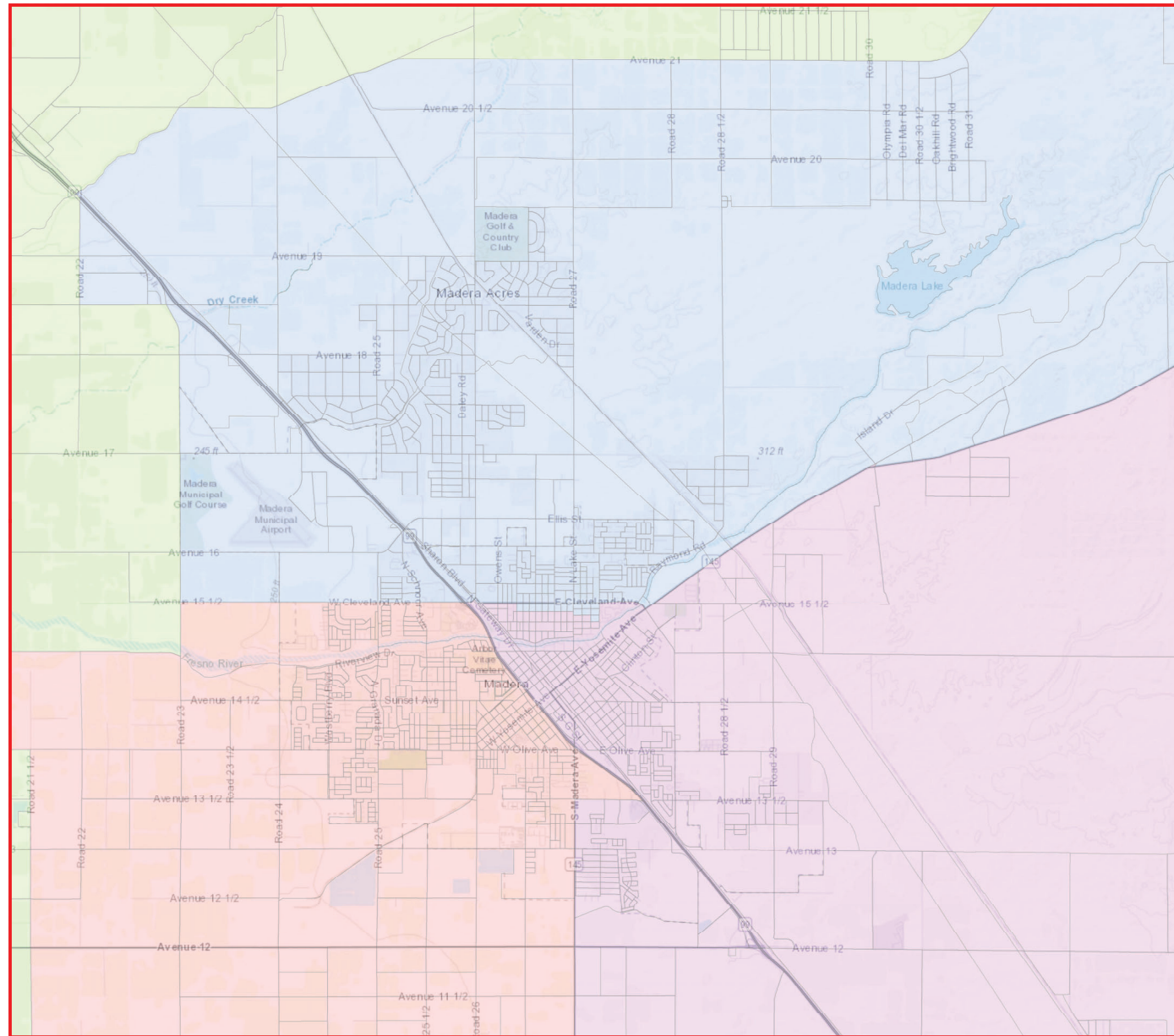


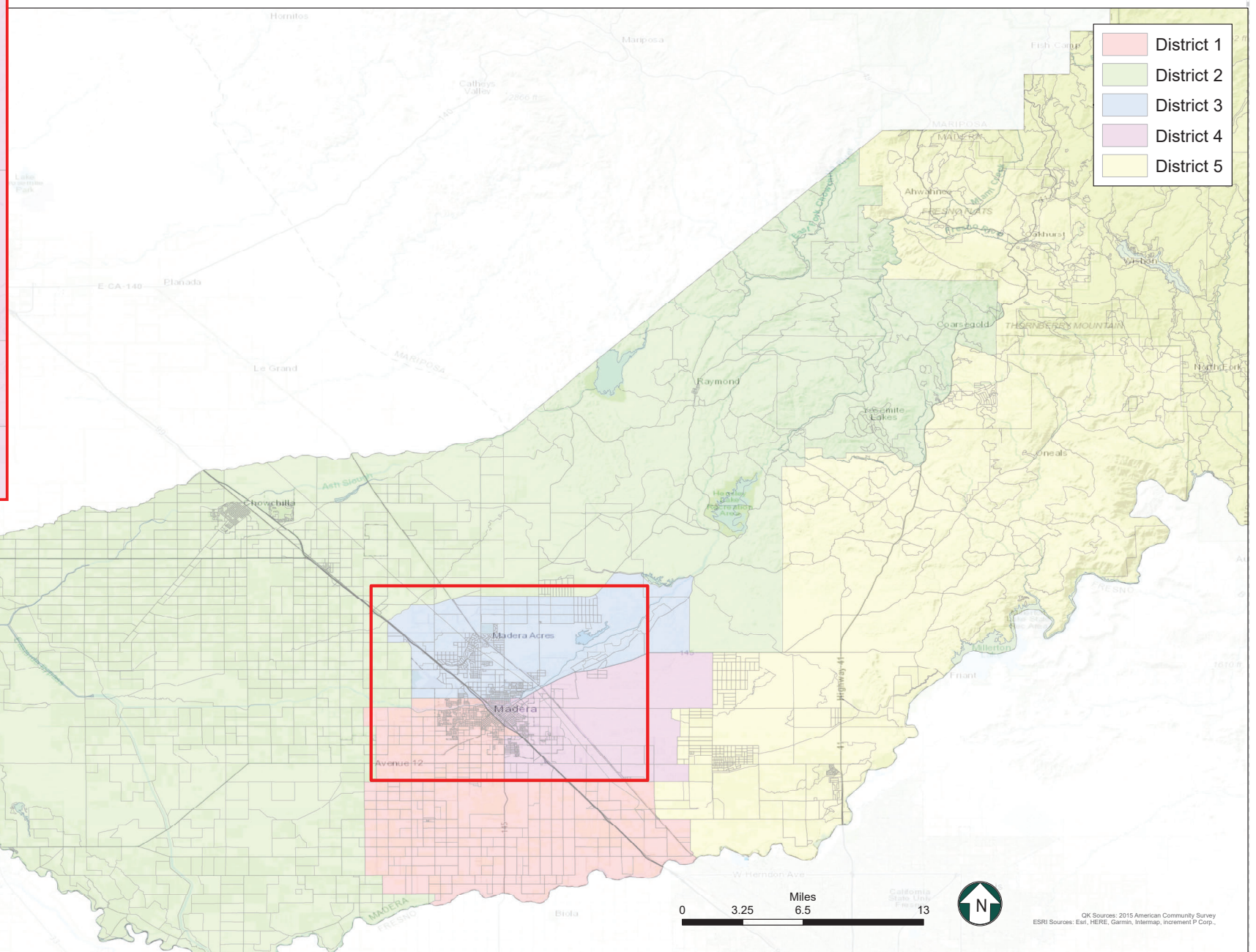
County of Madera

Proposed Supervisorial District Boundary Revision



Citizen Voting Age Population
Map 4

District	Total Population	Hispanic or Latino	Not Hispanic or Latino									
			White Alone	American Indian or Alaska Native Alone	Asian Alone	Black or African American Alone	Native Hawaiian or Other Pacific Islander Alone	American Indian or Alaska Native and White	Asian and White	Black or African American and White	American Indian or Alaska Native and Black or African American	Remainder of Two or More Race Responses
1	16,461	8,694 52.8%	6,299 38.3%	71 0.4%	483 2.9%	600 3.6%	1 0.0%	105 0.6%	27 0.2%	64 0.4%	0 0.0%	71 0.4%
2	18,305	4,957 27.1%	11,946 65.3%	228 1.2%	546 3.0%	162 0.9%	34 0.2%	257 1.4%	37 0.2%	84 0.5%	0 0.0%	31 0.2%
3	15,030	9,701 64.5%	4,205 28.0%	37 0.2%	193 1.3%	493 3.3%	0 0.0%	110 0.7%	4 0.0%	55 0.4%	25 0.2%	93 0.6%
4	13,135	9,295 70.8%	2,269 17.3%	40 0.3%	116 0.9%	1,308 10.0%	0 0.0%	41 0.3%	30 0.2%	0 0.0%	0 0.0%	33 0.3%
5	23,157	4,141 17.9%	17,377 75.0%	529 2.3%	447 1.9%	229 1.0%	4 0.0%	196 0.8%	93 0.4%	60 0.3%	0 0.0%	45 0.2%
Total:	86,088	36,788 42.7%	42,096 48.9%	905 1.1%	1,785 2.1%	2,792 3.2%	39 0.0%	709 0.8%	191 0.2%	263 0.3%	25 0.0%	273 0.3%



Map 4

District	Total Population	Ideal Population	Deviation from Ideal	Percent Deviation from Ideal
1	30,222	30,223	-1	0.00%
2	30,213	30,223	-10	-0.03%
3	30,234	30,223	11	0.04%
4	30,212	30,223	-11	-0.04%
5	30,232	30,223	9	0.03%
Total:	151,113	151,115		

Deviation between Largest and Smallest District 0.1%

Source: U.S. Census Bureau 2020 Decennial Census Data

