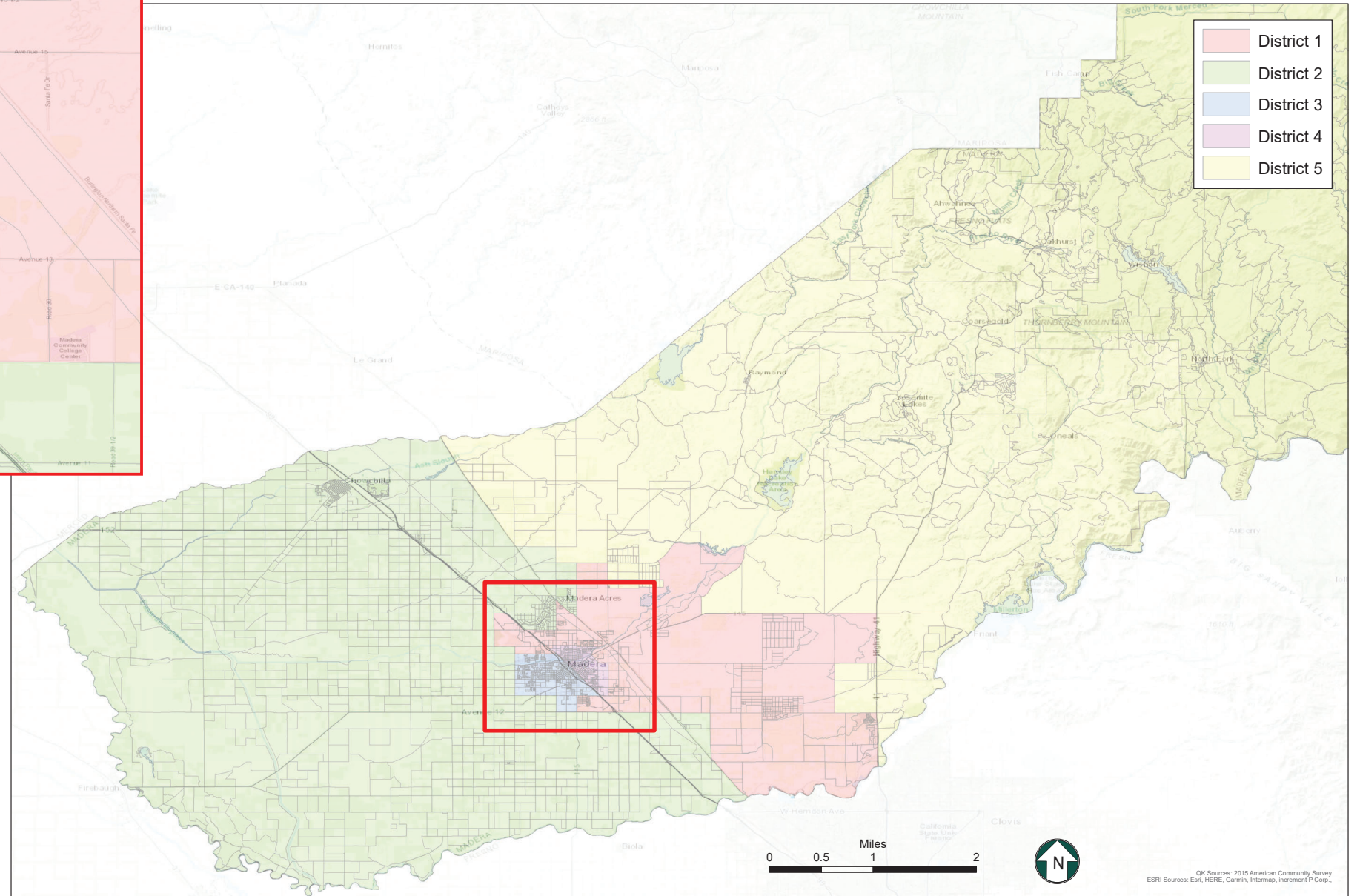


Citizen Voting Age Population  
Map 7

District	Total Population	Hispanic or Latino	Not Hispanic or Latino									
			White Alone	American Indian or Alaska Native Alone	Asian Alone	Black or African American Alone	Native Hawaiian or Other Pacific Islander Alone	American Indian or Alaska Native and White	Asian and White	Black or African American and White	American Indian or Alaska Native and Black or African American	Remainder of Two or More Race Responses
1	18,101	9,120 50.4%	7,308 40.4%	250 1.4%	398 2.2%	673 3.7%	4 0.0%	165 0.9%	23 0.1%	36 0.2%	0 0.0%	31 0.2%
2	15,871	6,762 42.6%	7,731 48.7%	120 0.8%	504 3.2%	296 1.9%	34 0.2%	110 0.7%	1 0.0%	120 0.8%	0 0.0%	61 0.4%
3	16,442	9,040 55.0%	5,824 35.4%	60 0.4%	431 2.6%	802 4.9%	1 0.0%	101 0.6%	33 0.2%	64 0.4%	0 0.0%	71 0.4%
4	11,364	8,354 73.5%	1,841 16.2%	56 0.5%	65 0.6%	874 7.7%	0 0.0%	42 0.4%	4 0.0%	0 0.0%	25 0.2%	65 0.6%
5	24,310	3,512 14.4%	19,392 79.8%	419 1.7%	387 1.6%	147 0.6%	0 0.0%	291 1.2%	130 0.5%	43 0.2%	0 0.0%	45 0.2%
<b>Total:</b>	<b>86,088</b>	<b>36,788 42.7%</b>	<b>42,096 48.9%</b>	<b>905 1.1%</b>	<b>1,785 2.1%</b>	<b>2,792 3.2%</b>	<b>39 0.0%</b>	<b>709 0.8%</b>	<b>191 0.2%</b>	<b>263 0.3%</b>	<b>25 0.0%</b>	<b>273 0.3%</b>



Map 7

District	Total Population	Ideal Population	Deviation from Ideal	Percent Deviation from Ideal
1	30,228	30,223	5	0.02%
2	30,226	30,223	3	0.01%
3	30,216	30,223	-7	-0.02%
4	30,220	30,223	-3	-0.01%
5	30,223	30,223	0	0.00%
<b>Total:</b>	<b>151,113</b>	<b>151,115</b>		

Deviation between Largest and Smallest District 0.04%

Source: U.S. Census Bureau 2020 Decennial Census Data

0 0.5 1 2 Miles



OK Sources: 2015 American Community Survey  
ESRI Sources: Esri, HERE, Garmin, Intermap, Inetmap, P Corp.