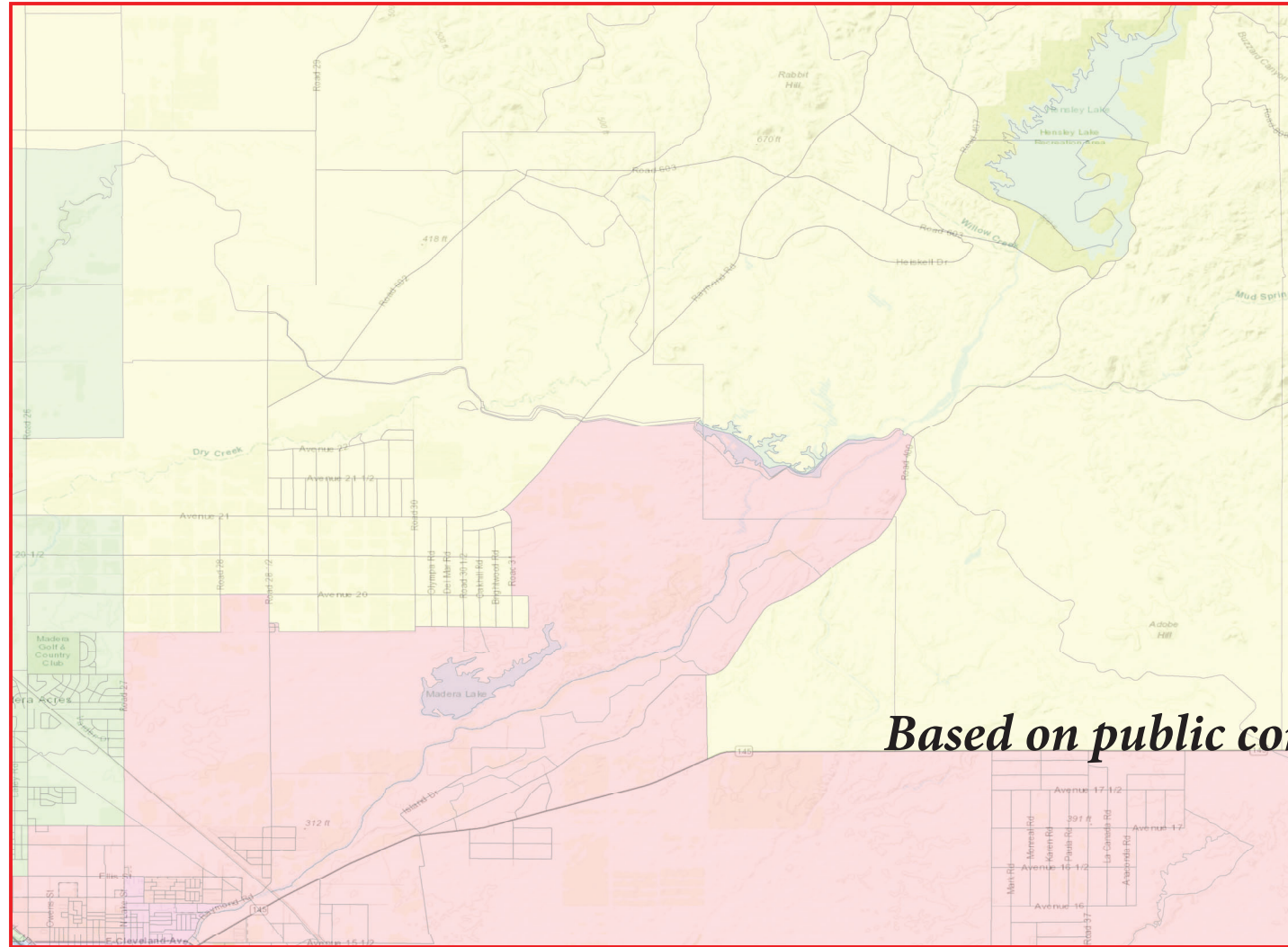
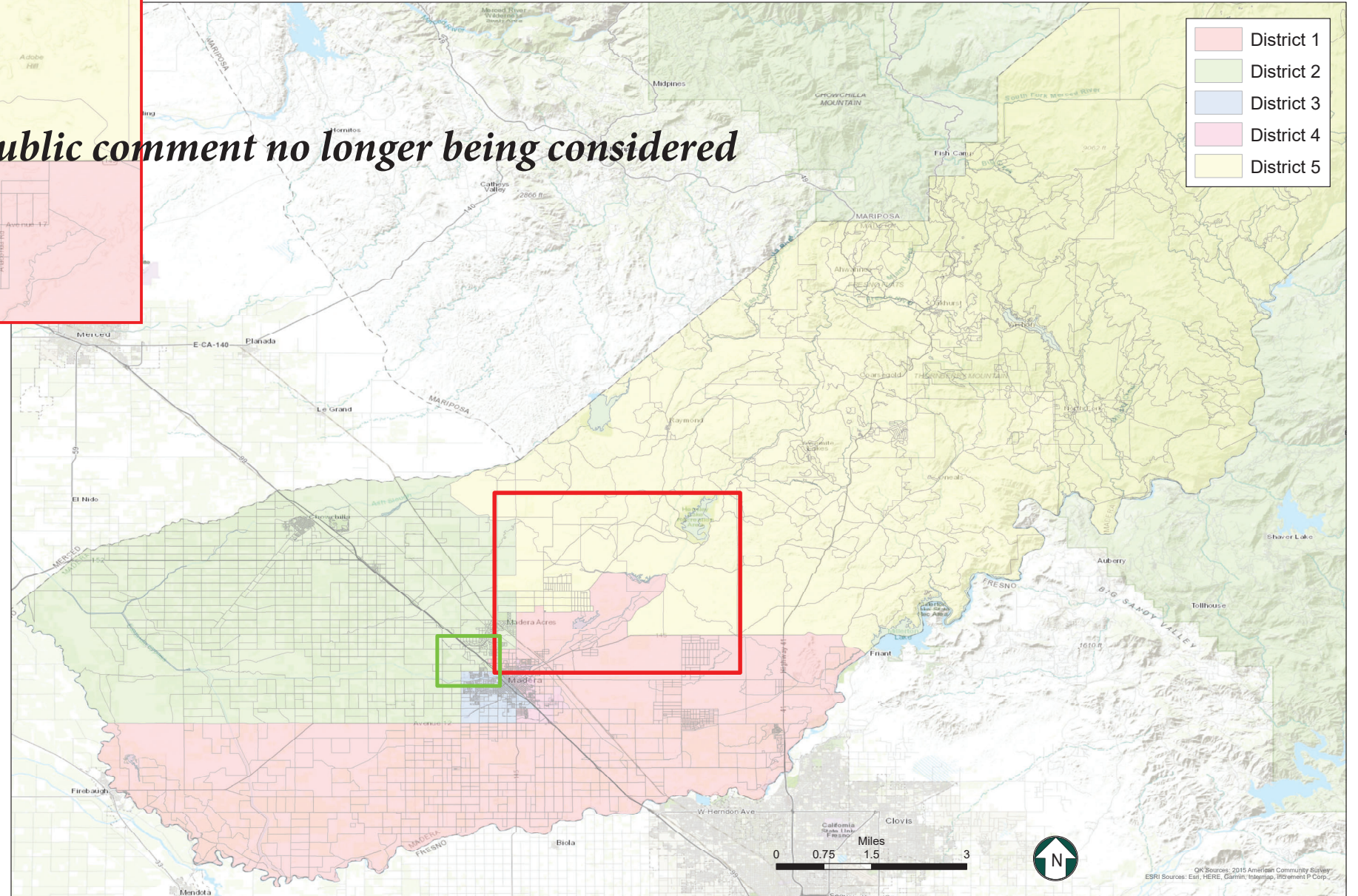
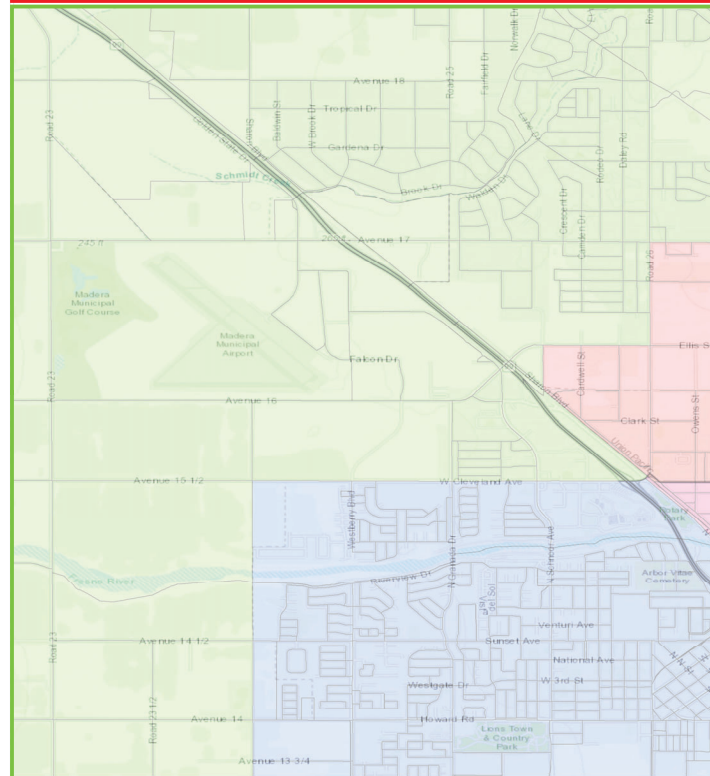


County of Madera

Proposed Supervisorial District Boundary Revision



Based on public comment no longer being considered



Map 5

District	Total Population	Ideal Population	Deviation from Ideal	Percent Deviation from Ideal
1	29,003	30,223	-1,220	-4.0%
2	30,771	30,223	548	1.8%
3	30,272	30,223	49	0.2%
4	31,802	30,223	1,579	5.2%
5	29,265	30,223	-958	-3.2%
Total:	151,113	151,115		

Deviation between Largest and Smallest District 9.3%

Source: U.S. Census Bureau 2020 Decennial Census Data

- District 1
- District 2
- District 3
- District 4
- District 5