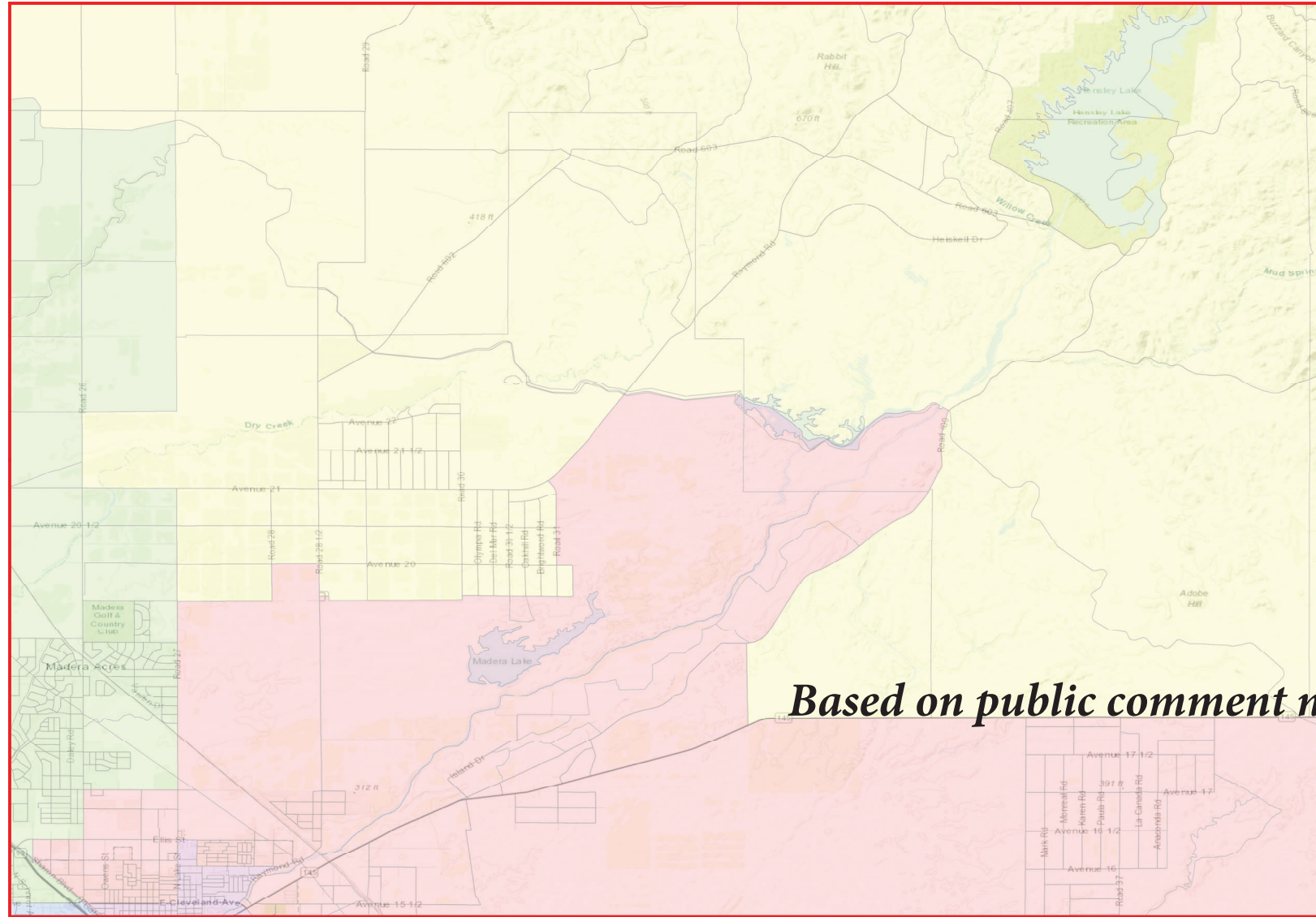
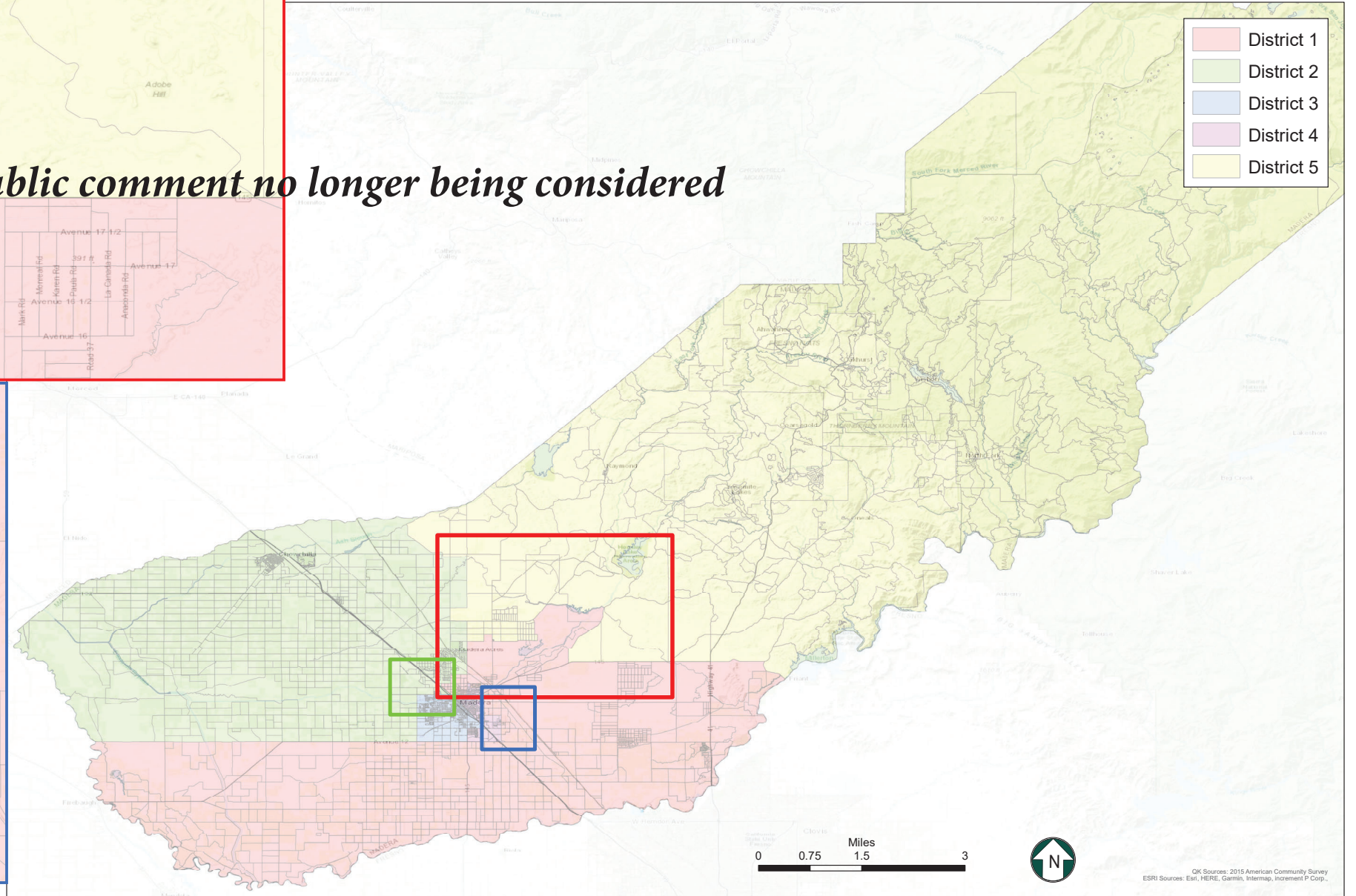
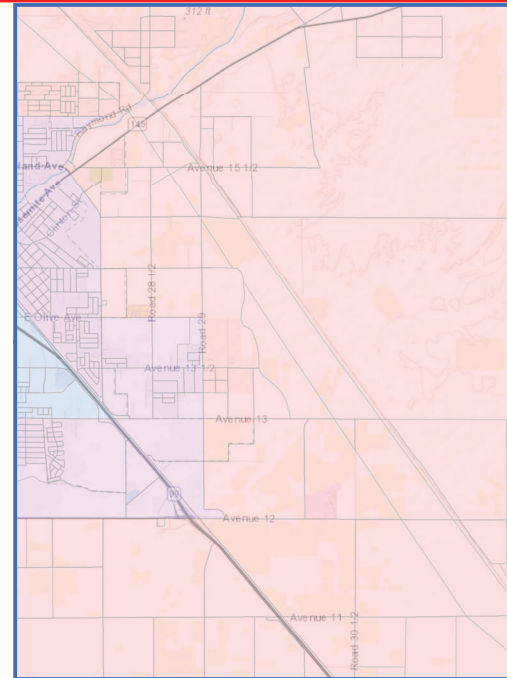
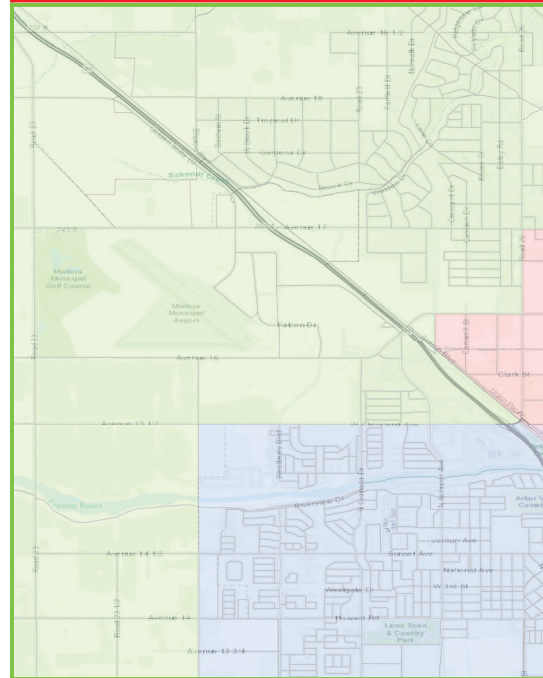


# County of Madera

## Proposed Supervisorial District Boundary Revision



*Based on public comment no longer being considered*



Map3

District	Total Population	Ideal Population	Deviation from Ideal	Percent Deviation from Ideal
1	29,545	30,223	-678	-2.2%
2	30,771	30,223	548	1.8%
3	30,272	30,223	49	0.2%
4	31,216	30,223	993	3.3%
5	29,309	30,223	-914	-3.0%
<b>Total:</b>	<b>151,113</b>	<b>151,115</b>		

Deviation between Largest and Smallest District 6.3%

Source: U.S. Census Bureau 2020 Decennial Census Data

