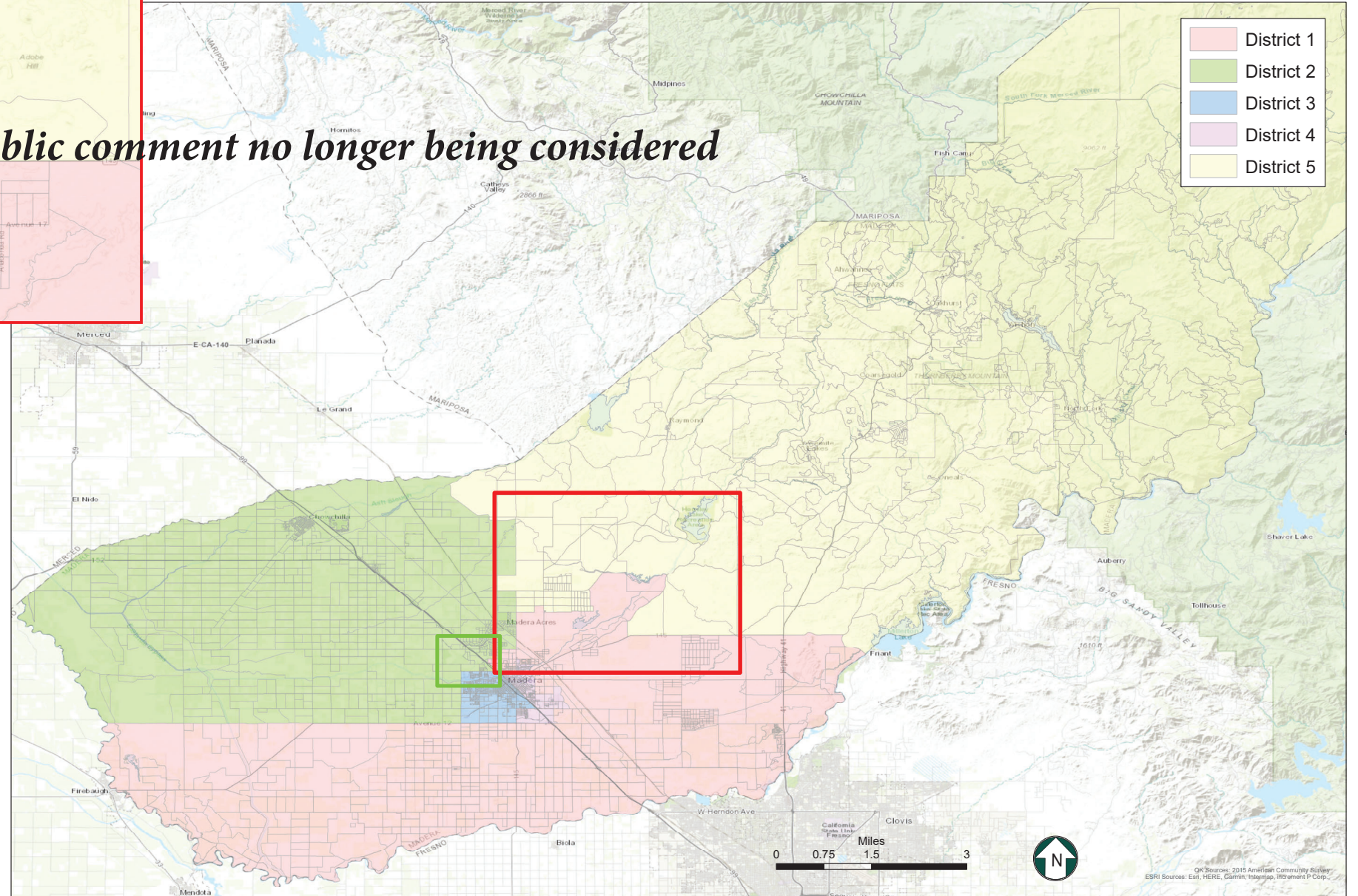
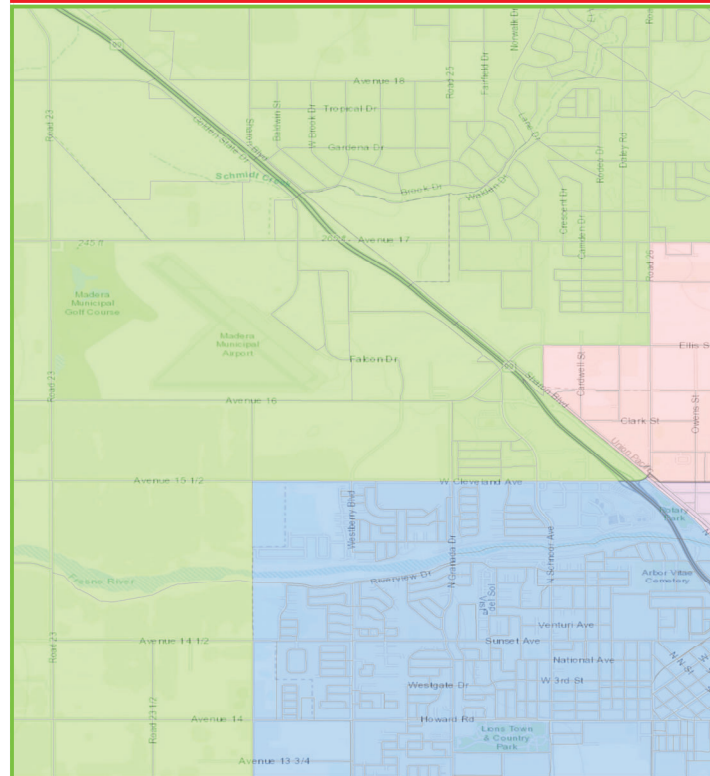
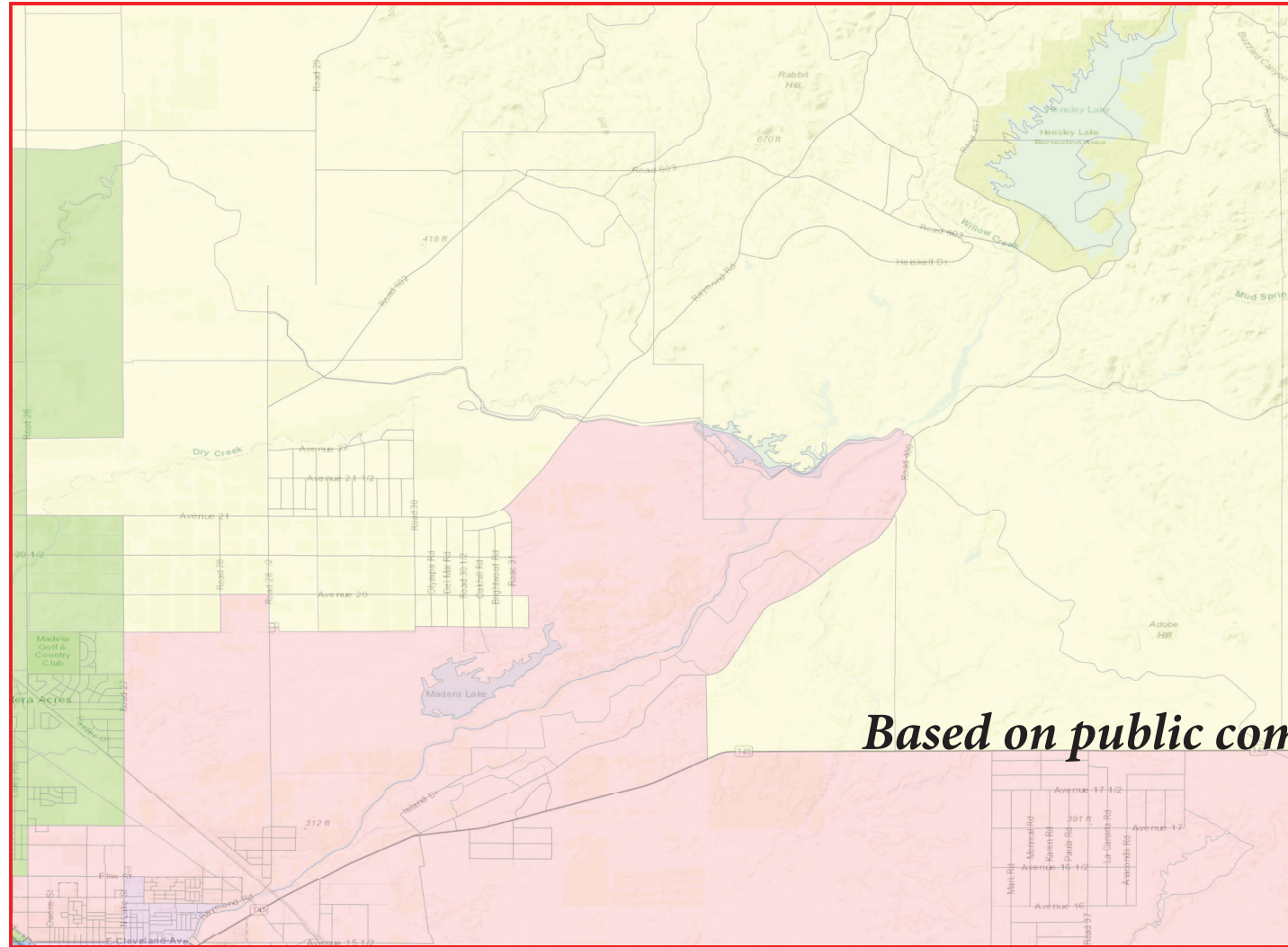


County of Madera

Proposed Supervisorial District Boundary Revision



Map 2

District	Total Population	Ideal Population	Deviation from Ideal	Percent Deviation from Ideal
1	28,959	30,223	-1,264	-4.2%
2	30,771	30,223	548	1.8%
3	30,272	30,223	49	0.2%
4	31,802	30,223	1,579	5.2%
5	29,309	30,223	-914	-3.0%
Total:	151,113	151,115		

Deviation between Largest and Smallest District 9.4%

Source: U.S. Census Bureau 2020 Decennial Census Data