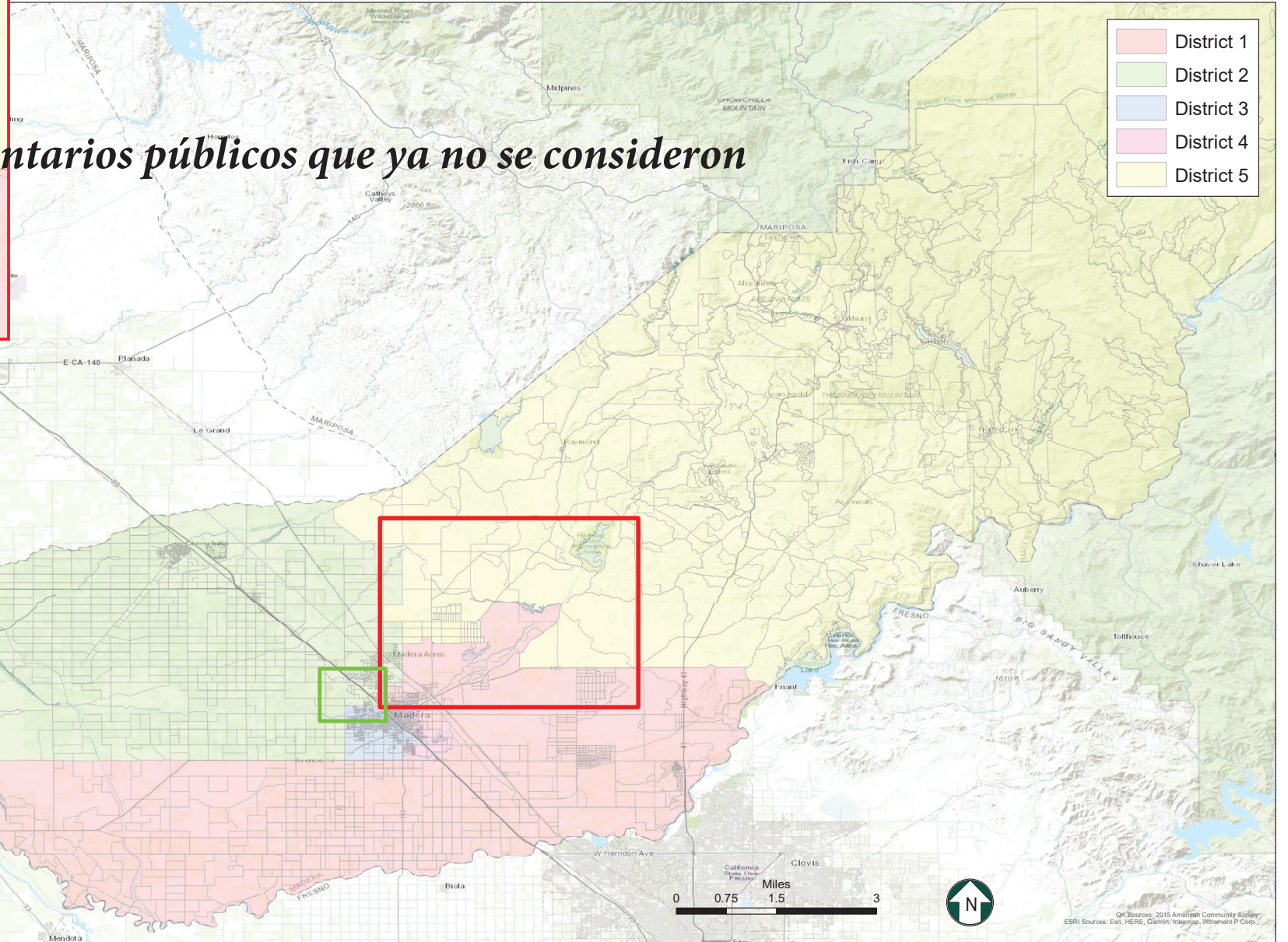
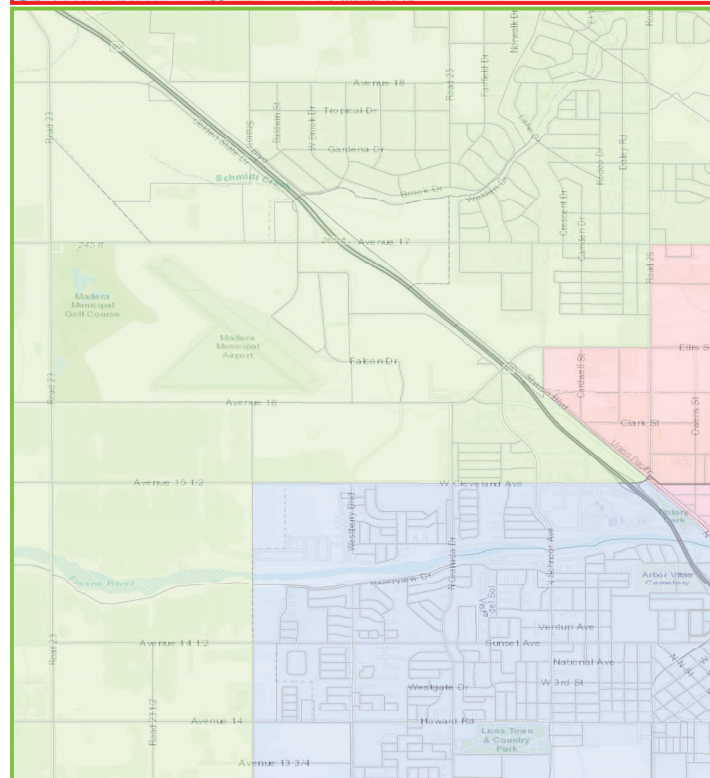
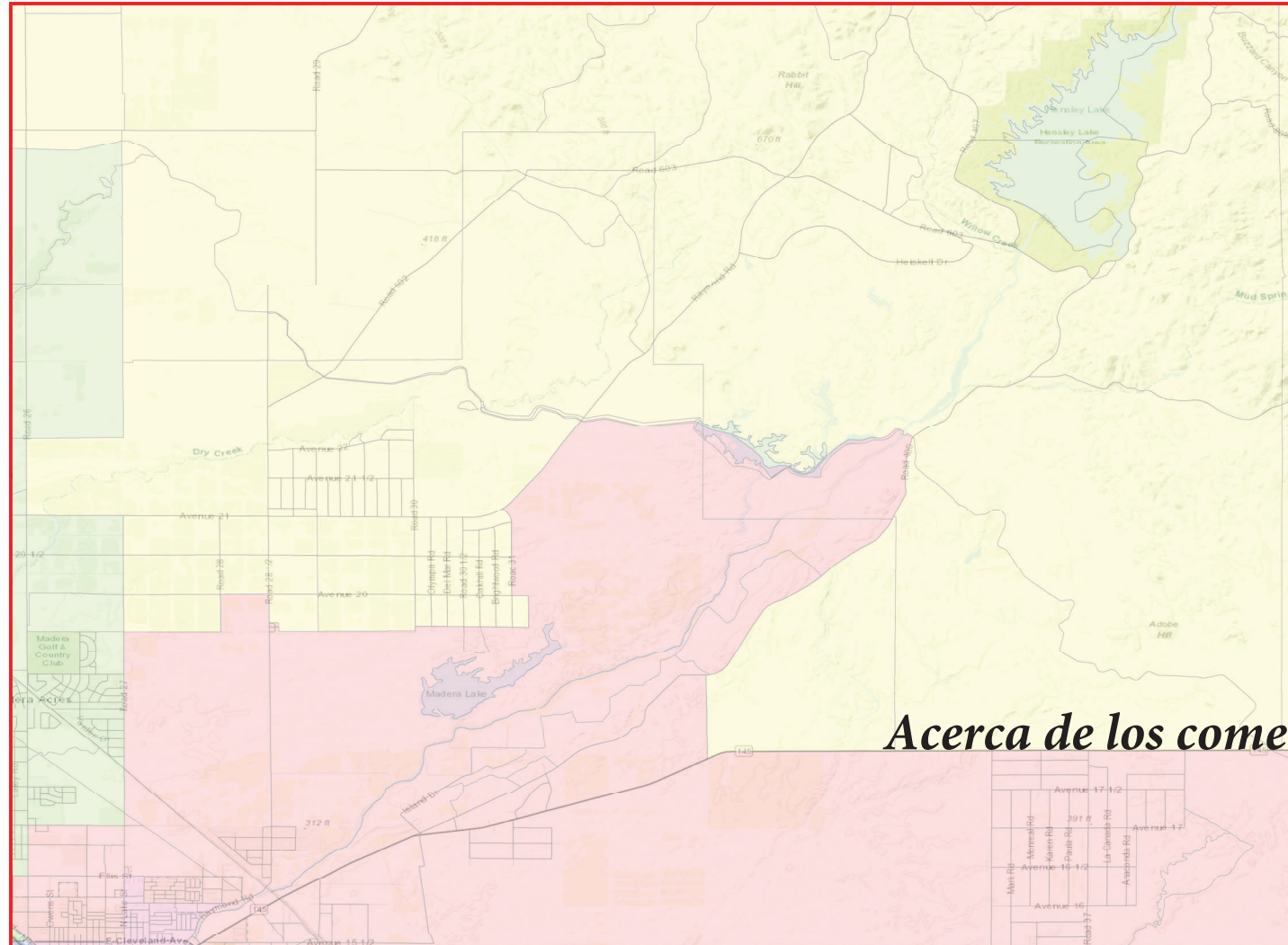


# County of Madera

## Proposed Supervisorial District Boundary Revision



*Acerca de los comentarios públicos que ya no se consideraron*

**Map 5**

District	Total Population	Ideal Population	Deviation from Ideal	Percent Deviation from Ideal
1	29,003	30,223	-1,220	-4.0%
2	30,771	30,223	548	1.8%
3	30,272	30,223	49	0.2%
4	31,802	30,223	1,579	5.2%
5	29,265	30,223	-958	-3.2%
<b>Total:</b>	<b>151,113</b>	<b>151,115</b>		

Deviation between Largest and Smallest District    9.3%

Source: U.S. Census Bureau 2020 Decennial Census Data

- District 1
- District 2
- District 3
- District 4
- District 5

OK Sources: 2015 American Community Survey  
ESRI Sources: Esri, HERE, Garmin, Intelmap, IPOL, Intermap, P Corp.