

2020 Madera County Population Data (With Census Block Corrections)

District	Total Population	Ideal Population	Deviation from Ideal	Percent Deviation
1 (Brett Frazier)	31,044	30,222	822	2.7%
2 (David Rogers)	29,036	30,222	(1,186)	(4.0%)
3 (Robert Poythress)	32,005*	30,222	1,783	5.9%
4 (Leticia Gonzalez)	31,802	30,222	1,580	5.2%
5 (Tom Wheeler)	27,224*	30,222	(2,998)	(9.9%)
Total:	151,111	151,111		

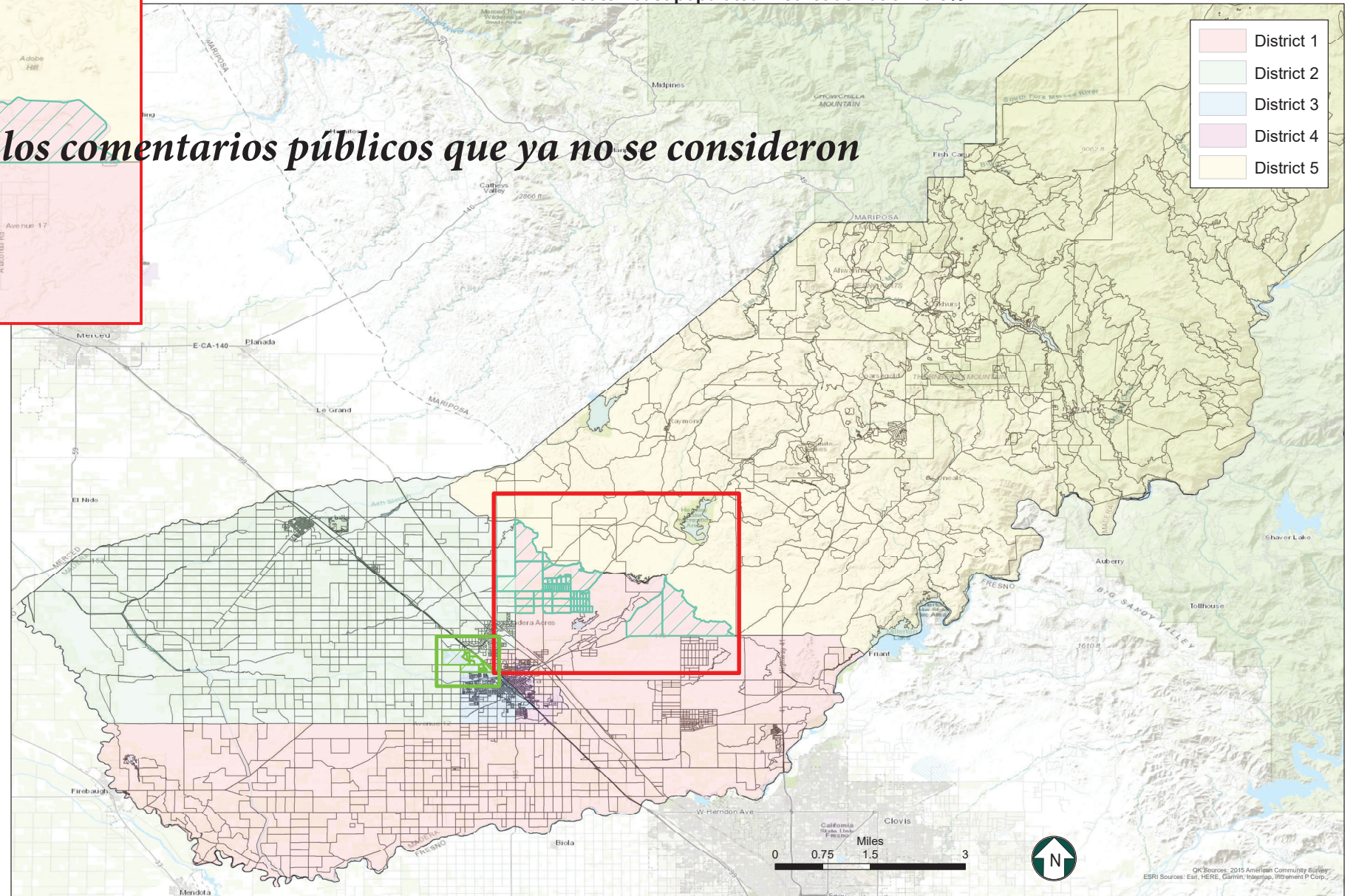
Notes: This table includes ONLY the required population from the Valley State Prison, per the Elections Code.
*Identify the values of the largest and smallest Districts by population.

Most to Least populated District deviation: 17.6%
Madera County Population After District Revision

District	Total Population
1 (Brett Frazier)	28,959*
2 (David Rogers)	30,771
3 (Robert Poythress)	30,270
4 (Leticia Gonzalez)	31,802*
5 (Tom Wheeler)	29,309
Total:	151,111

Notes: * Identify the values of the largest and smallest Districts by population.

Most to Least populated District deviation: 9.8%



Acerca de los comentarios públicos que ya no se consideran