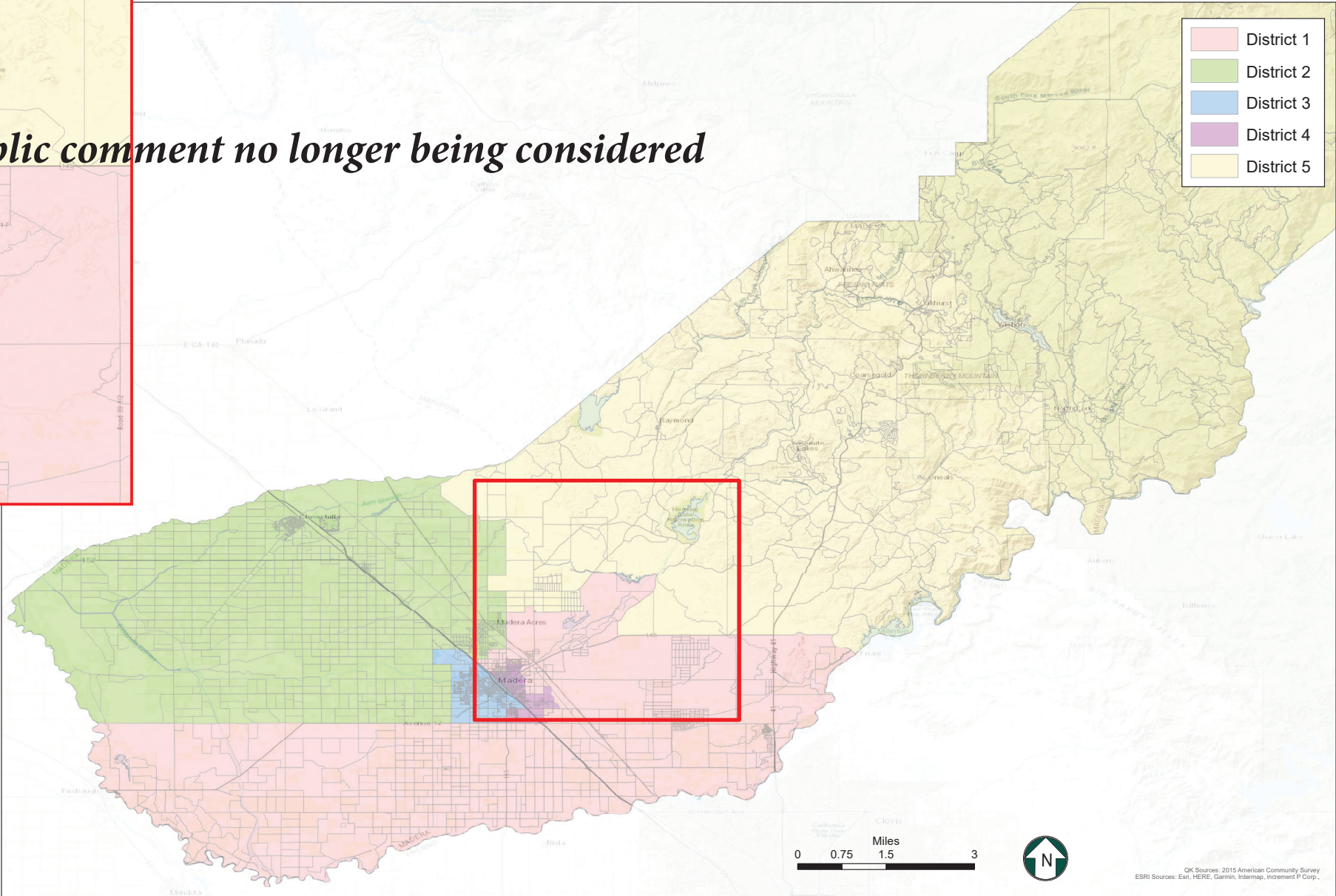
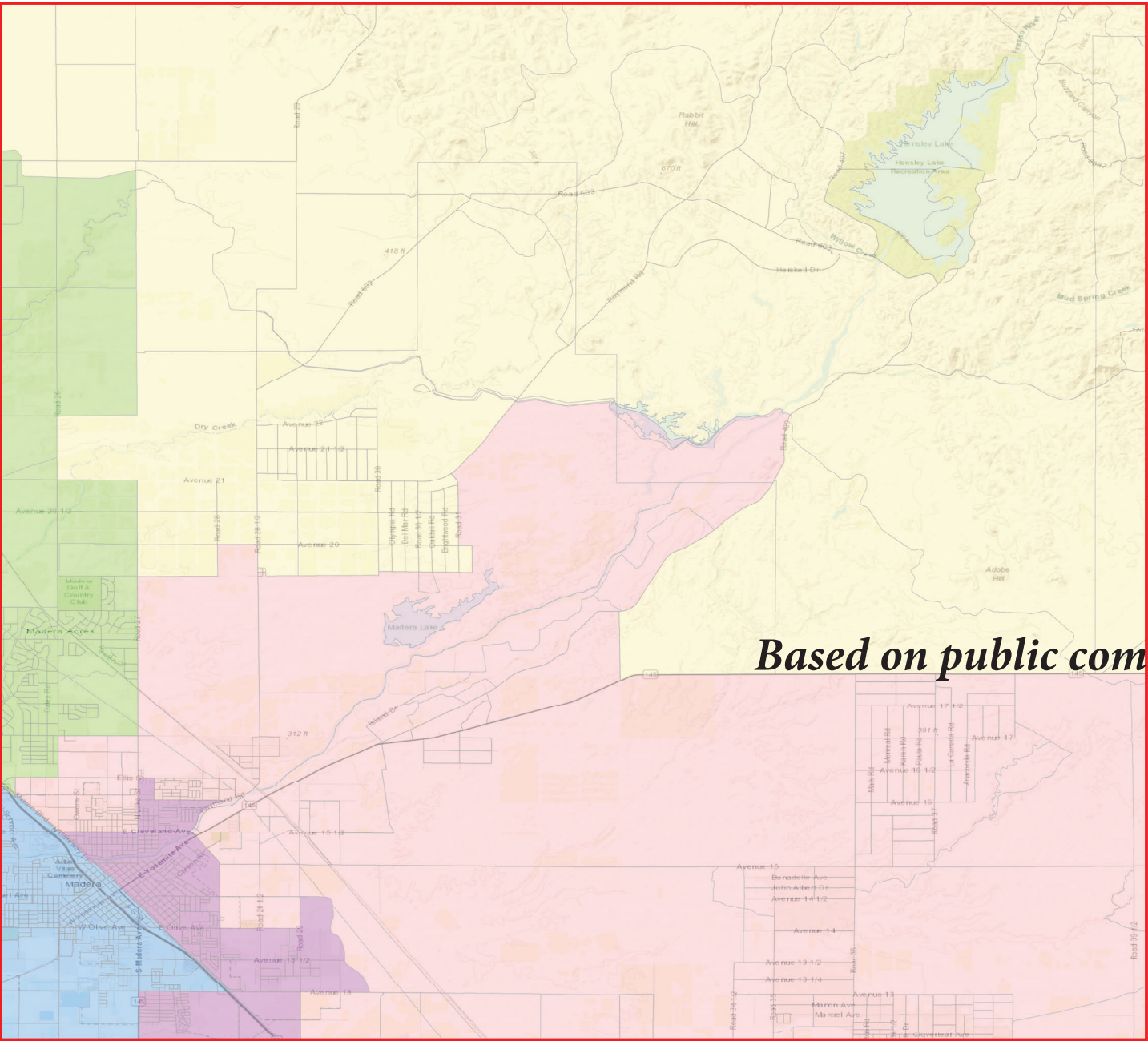


# County of Madera

## Proposed Supervisorial District Boundary Revision

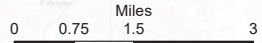


Map 1

District	Total Population	Ideal Population	Deviation from Ideal	Percent Deviation from Ideal
1	28,959	30,223	-1,264	-4.2%
2	29,036	30,223	-1,187	-3.9%
3	32,007	30,223	1,784	5.9%
4	31,802	30,223	1,579	5.2%
5	29,309	30,223	-914	-3.0%
<b>Total:</b>	<b>151,113</b>	<b>151,115</b>		

Deviation between Largest and Smallest District 10.1%

Source: U.S. Census Bureau 2020 Decennial Census Data



OK Sources: 2015 American Community Survey  
ESRI Sources: Esri, HERE, Garmin, Intermap, InCREMENT P Corp.