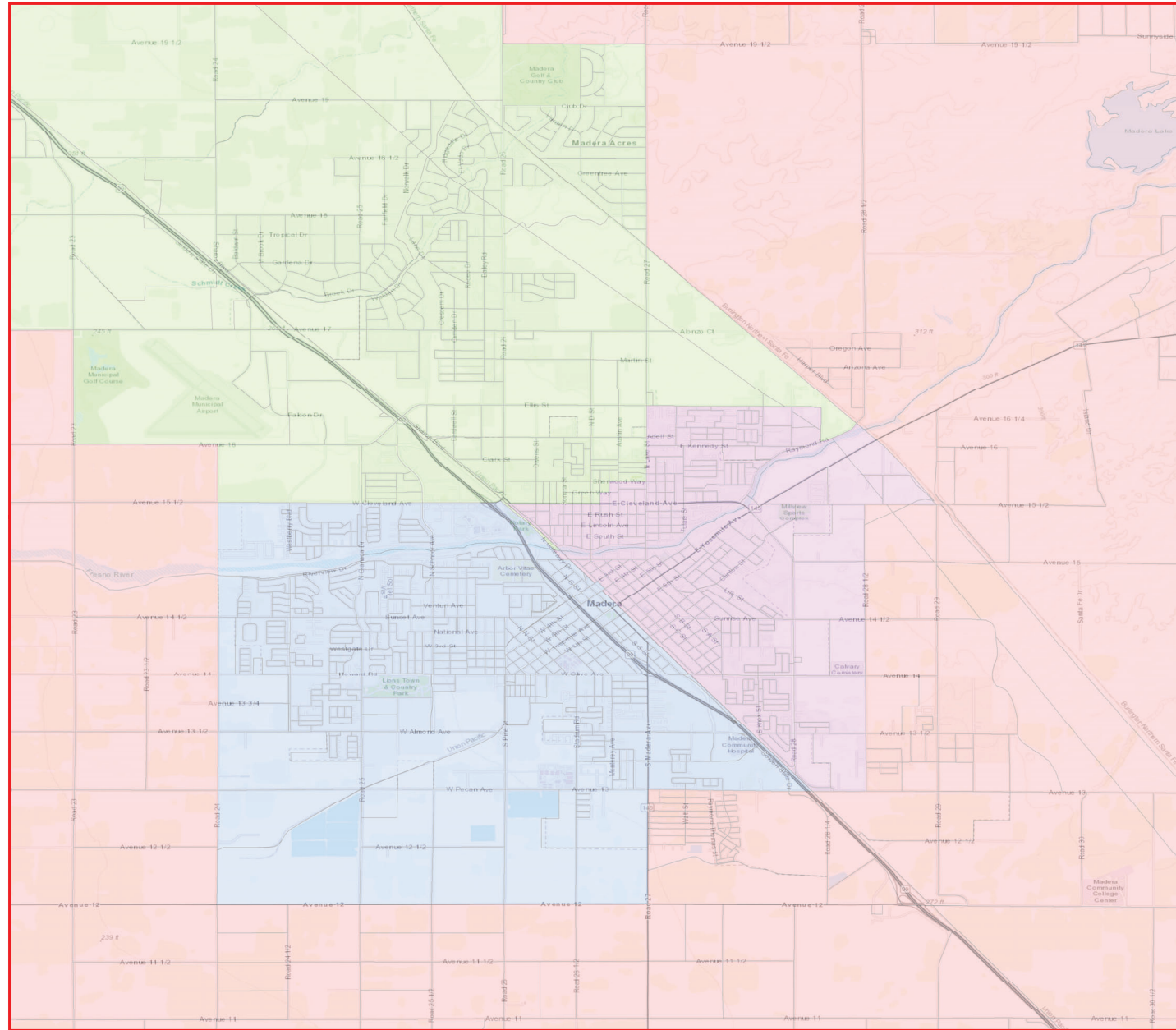


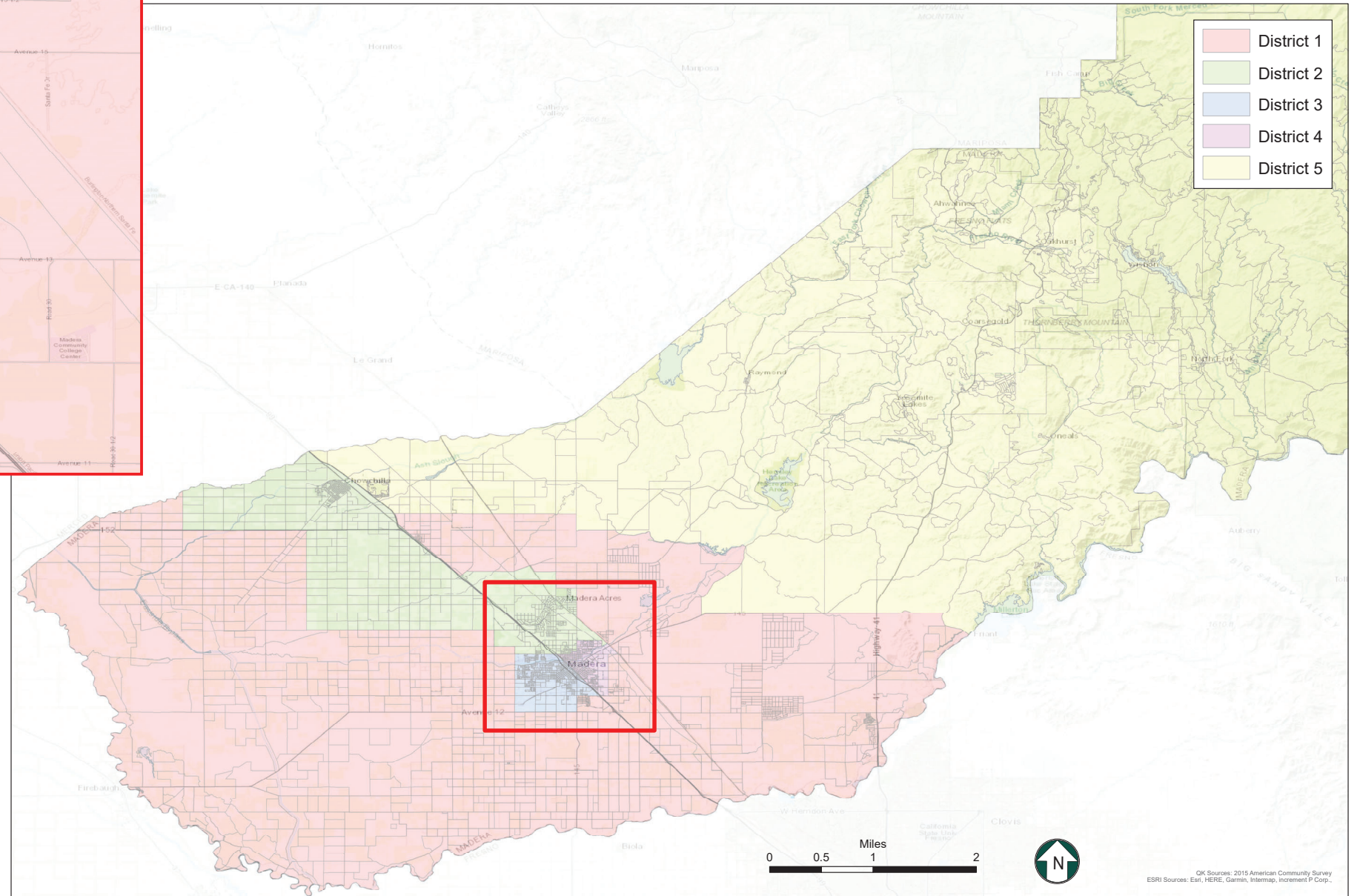
County of Madera

Proposed Supervisorial District Boundary Revision



Citizen Voting Age Population
Map 10

District	Total Population	Hispanic or Latino	Not Hispanic or Latino									
			White Alone	American Indian or Alaska Native Alone	Asian Alone	Black or African American Alone	Native Hawaiian or Other Pacific Islander Alone	American Indian or Alaska Native and White	Asian and White	Black or African American and White	American Indian or Alaska Native and Black or African American	Remainder of Two or More Race Responses
1	18,318	8,262	8,527	322	340	590	4	130	37	101	0	18
2	15,881	8,219	6,455	31	324	419	15	153	4	55	0	81
3	16,470	9,051	5,841	60	431	802	1	101	33	64	0	71
4	11,206	8,077	1,875	58	80	834	0	28	0	0	25	60
5	24,213	3,179	19,398	434	610	147	19	297	117	43	0	43
Total:	86,088	36,788	42,096	905	1,785	2,792	39	709	191	263	25	273



Map 10

District	Total Population	Ideal Population	Deviation from Ideal	Percent Deviation from Ideal
1	30,242	30,223	19	0.06%
2	30,207	30,223	-16	-0.05%
3	30,272	30,223	49	0.16%
4	30,238	30,223	15	0.05%
5	30,154	30,223	-69	-0.23%
Total:	151,113	151,115		

Deviation between Largest and Smallest District 0.39%

Source: U.S. Census Bureau 2020 Decennial Census Data

0 0.5 1 2 Miles



OK Sources: 2015 American Community Survey
ESRI Sources: Esri, HERE, Garmin, Intermap, Incentiv P Corp.,