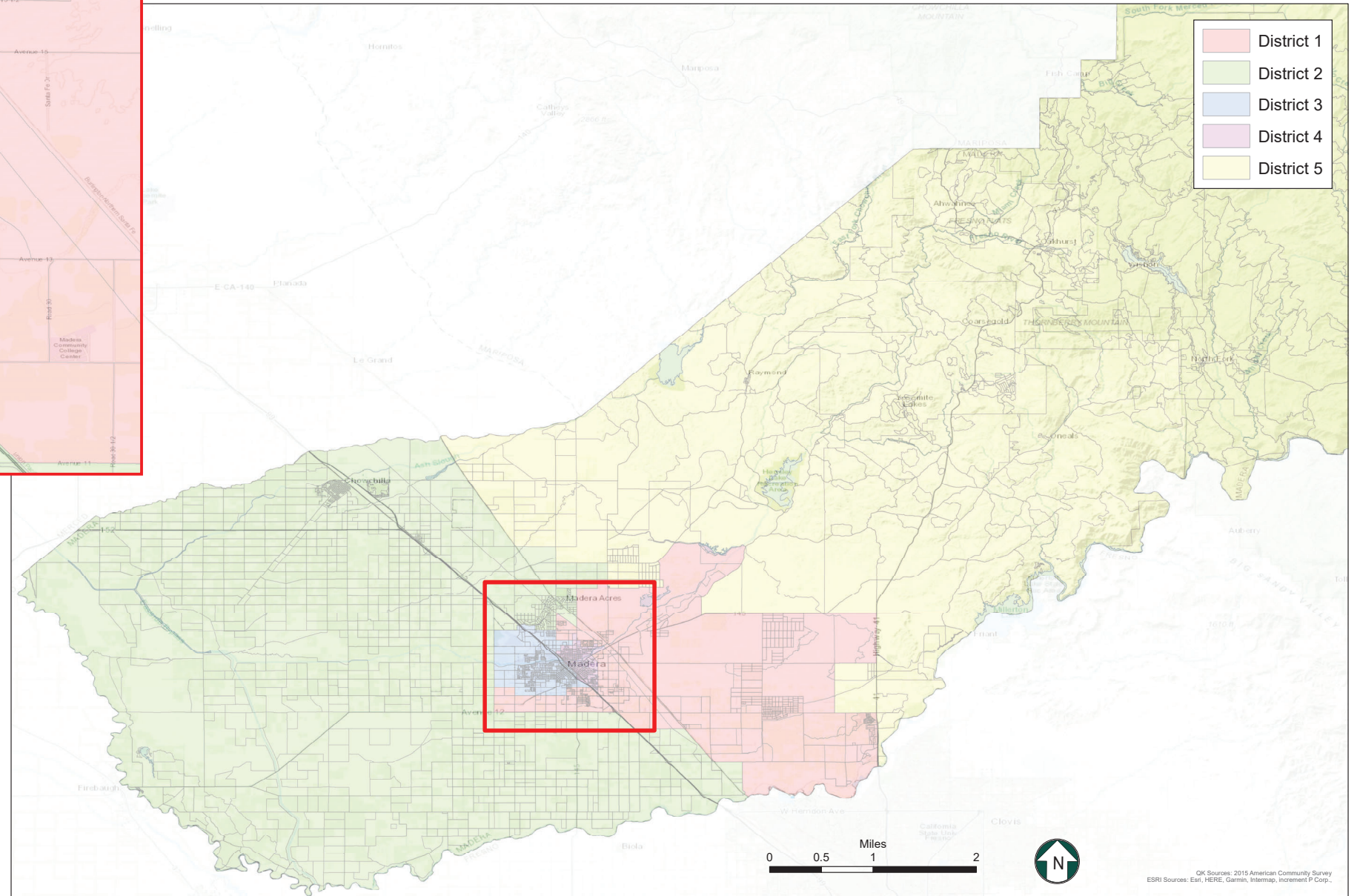


Citizen Voting Age Population
Map 9

District	Total Population	Hispanic or Latino	Not Hispanic or Latino									
			White Alone	American Indian or Alaska Native Alone	Asian Alone	Black or African American Alone	Native Hawaiian or Other Pacific Islander Alone	American Indian or Alaska Native and White	Asian and White	Black or African American and White	American Indian or Alaska Native and Black or African American	Remainder of Two or More Race Responses
1	17,969	9,137 50.8%	7,079 39.4%	252 1.4%	262 1.5%	1,003 5.6%	4 0.0%	129 0.7%	30 0.2%	36 0.2%	0 0.0%	15 0.1%
2	15,901	6,866 43.2%	7,622 47.9%	120 0.8%	499 3.1%	303 1.9%	34 0.2%	110 0.7%	0 0.0%	120 0.8%	0 0.0%	66 0.4%
3	16,857	8,997 53.4%	6,359 37.7%	60 0.4%	585 3.5%	551 3.3%	1 0.0%	130 0.8%	28 0.2%	64 0.4%	0 0.0%	78 0.5%
4	11,051	8,276 74.9%	1,644 14.9%	54 0.5%	52 0.5%	788 7.1%	0 0.0%	49 0.4%	3 0.0%	0 0.0%	25 0.2%	69 0.6%
5	24,310	3,512 14.4%	19,392 79.8%	419 1.7%	387 1.6%	147 0.6%	0 0.0%	291 1.2%	130 0.5%	43 0.2%	0 0.0%	45 0.2%
Total:	86,088	36,788 42.7%	42,096 48.9%	905 1.1%	1,785 2.1%	2,792 3.2%	39 0.0%	709 0.8%	191 0.2%	263 0.3%	25 0.0%	273 0.3%



Map 9

District	Total Population	Ideal Population	Deviation from Ideal	Percent Deviation from Ideal
1	30,216	30,223	-7	-0.02%
2	30,229	30,223	6	0.02%
3	30,225	30,223	2	0.01%
4	30,220	30,223	-3	-0.01%
5	30,223	30,223	0	0.00%
Total:	151,113	151,115		

Deviation between Largest and Smallest District 0.04%

Source: U.S. Census Bureau 2020 Decennial Census Data

0 0.5 1 2 Miles



OK Sources: 2015 American Community Survey
ESRI Sources: Esri, HERE, Garmin, Intermap, Incentiv P Corp.,