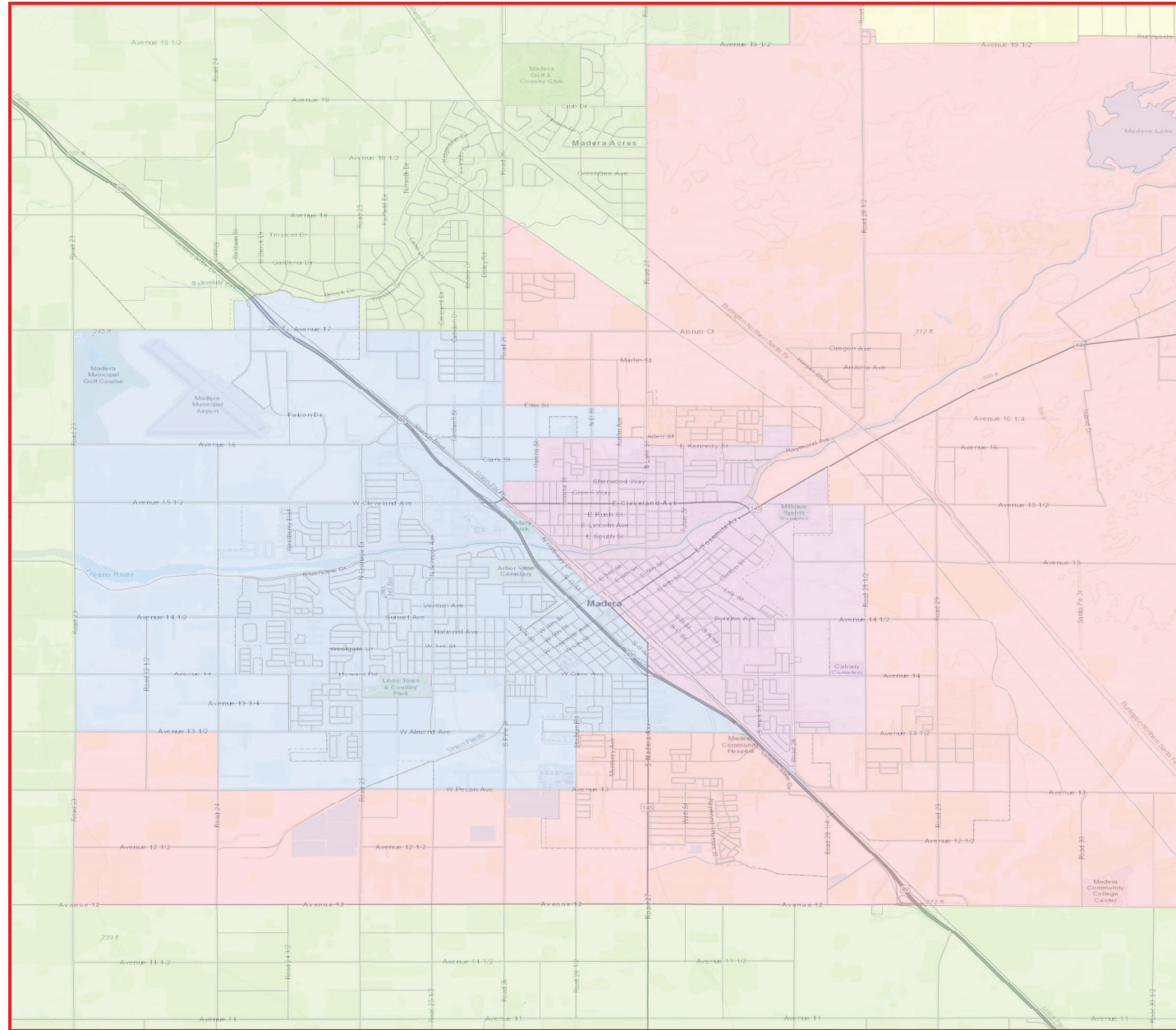


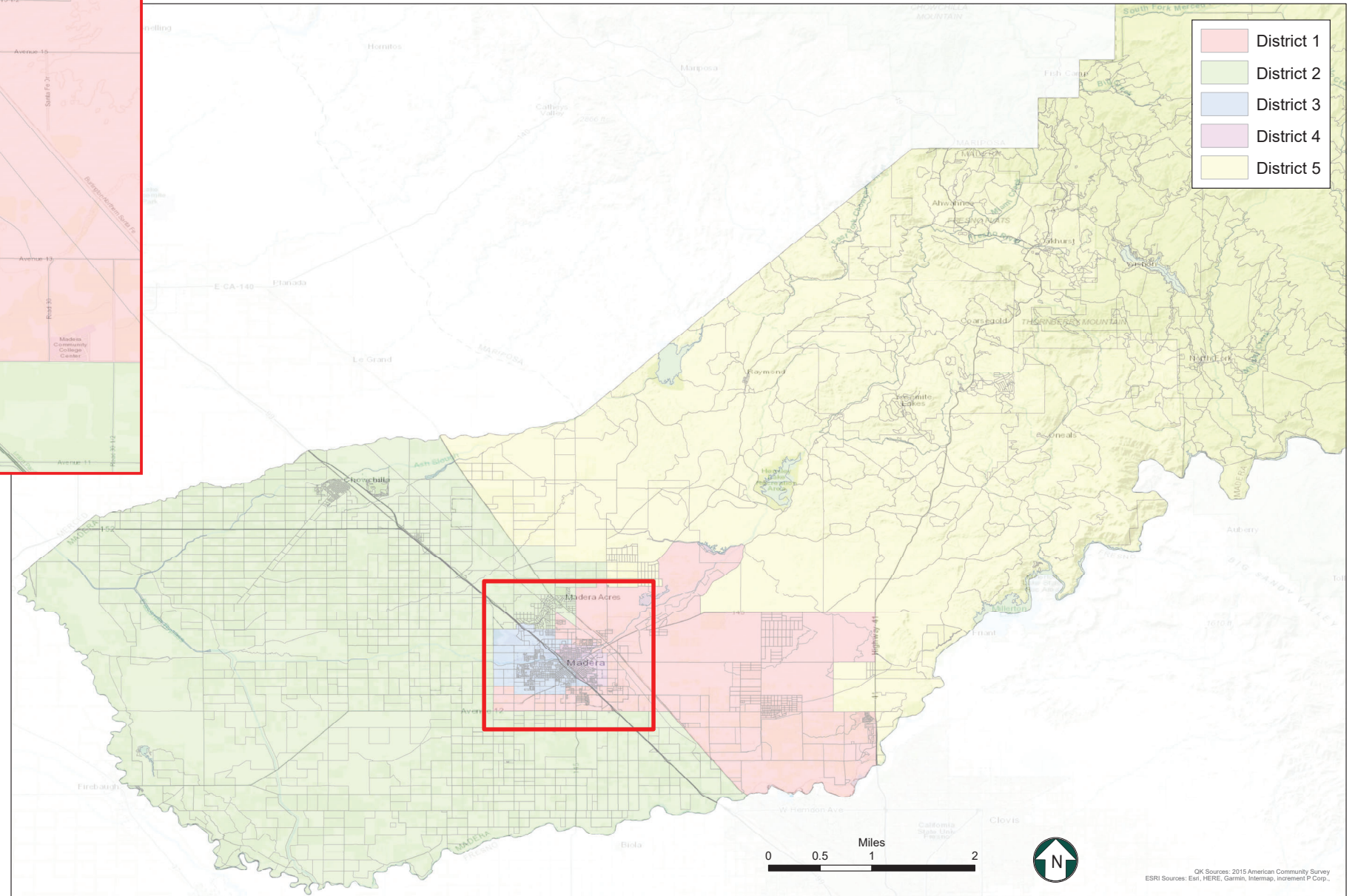
County of Madera

Proposed Supervisorial District Boundary Revision



Citizen Voting Age Population
Map 8

District	Total Population	Hispanic or Latino	Not Hispanic or Latino									
			White Alone	American Indian or Alaska Native Alone	Asian Alone	Black or African American Alone	Native Hawaiian or Other Pacific Islander Alone	American Indian or Alaska Native and White	Asian and White	Black or African American and White	American Indian or Alaska Native and Black or African American	Remainder of Two or More Race Responses
1	17,584	8,997	6,906	249	236	939	4	135	30	36	0	19
		51.2%	39.3%	1.4%	1.3%	5.3%	0.0%	0.8%	0.2%	0.2%	0.0%	0.1%
2	15,905	6,875	7,614	120	498	303	34	110	0	120	0	66
		43.2%	47.9%	0.8%	3.1%	1.9%	0.2%	0.7%	0.0%	0.8%	0.0%	0.4%
3	16,857	8,997	6,359	60	585	551	1	130	28	64	0	78
		53.4%	37.7%	0.4%	3.5%	3.3%	0.0%	0.8%	0.2%	0.4%	0.0%	0.5%
4	11,432	8,407	1,825	57	79	852	0	43	3	0	25	65
		73.5%	16.0%	0.5%	0.7%	7.5%	0.0%	0.4%	0.0%	0.0%	0.2%	0.6%
5	24,310	3,512	19,392	419	387	147	0	291	130	43	0	45
		14.4%	79.8%	1.7%	1.6%	0.6%	0.0%	1.2%	0.5%	0.2%	0.0%	0.2%
Total:	86,088	36,788	42,096	905	1,785	2,792	39	709	191	263	25	273
		42.7%	48.9%	1.1%	2.1%	3.2%	0.0%	0.8%	0.2%	0.3%	0.0%	0.3%



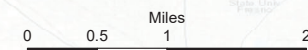
- District 1
- District 2
- District 3
- District 4
- District 5

Map 8

District	Total Population	Ideal Population	Deviation from Ideal	Percent Deviation from Ideal
1	30,214	30,223	-9	-0.03%
2	30,233	30,223	10	0.03%
3	30,225	30,223	2	0.01%
4	30,218	30,223	-5	-0.02%
5	30,223	30,223	0	0.00%
Total:	151,113	151,115		

Deviation between Largest and Smallest District 0.06%

Source: U.S. Census Bureau 2020 Decennial Census Data



OK Sources: 2015 American Community Survey
ESRI Sources: Esri, HERE, Garmin, Intermap, Incentiv P Corp.,