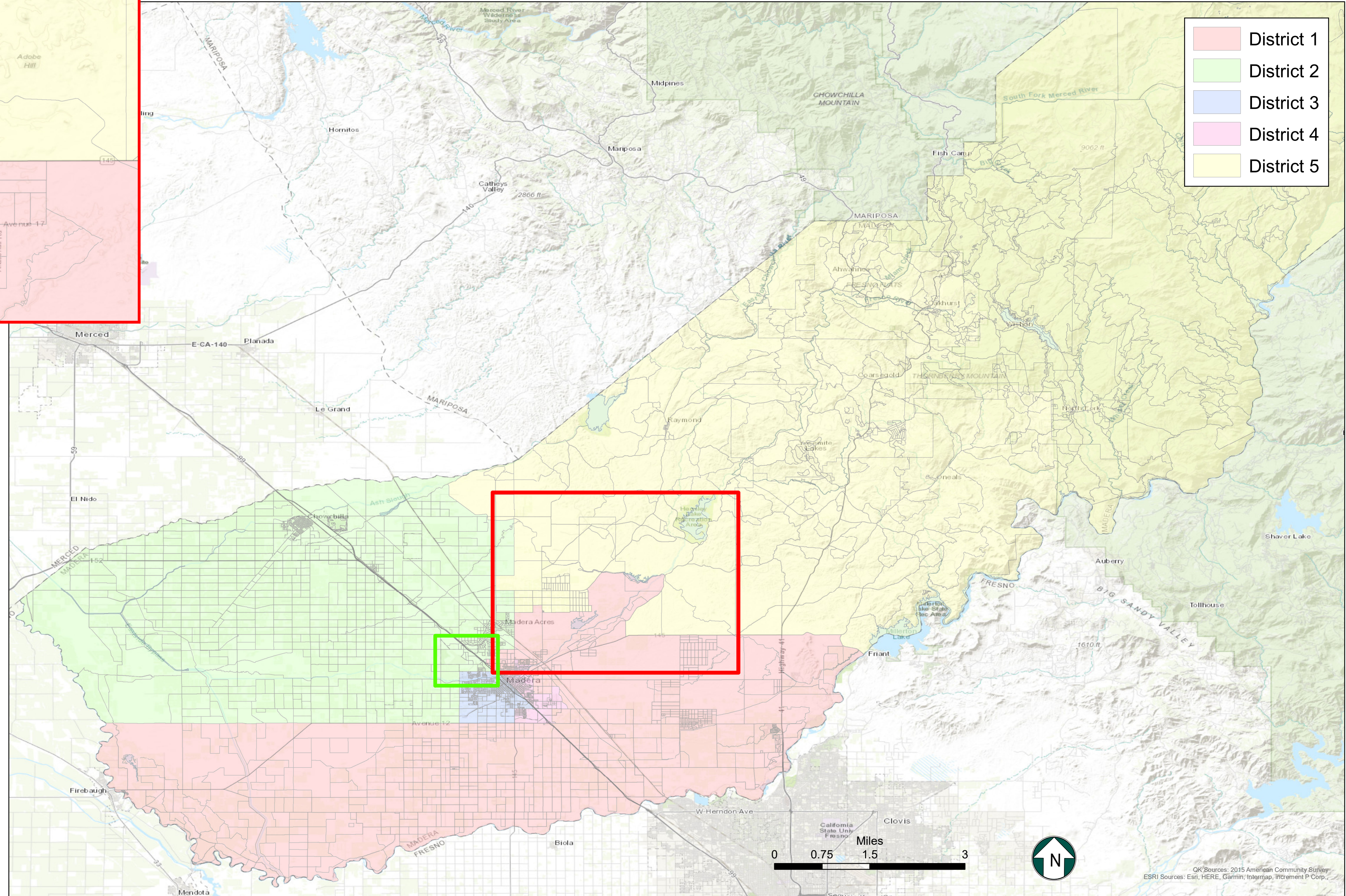
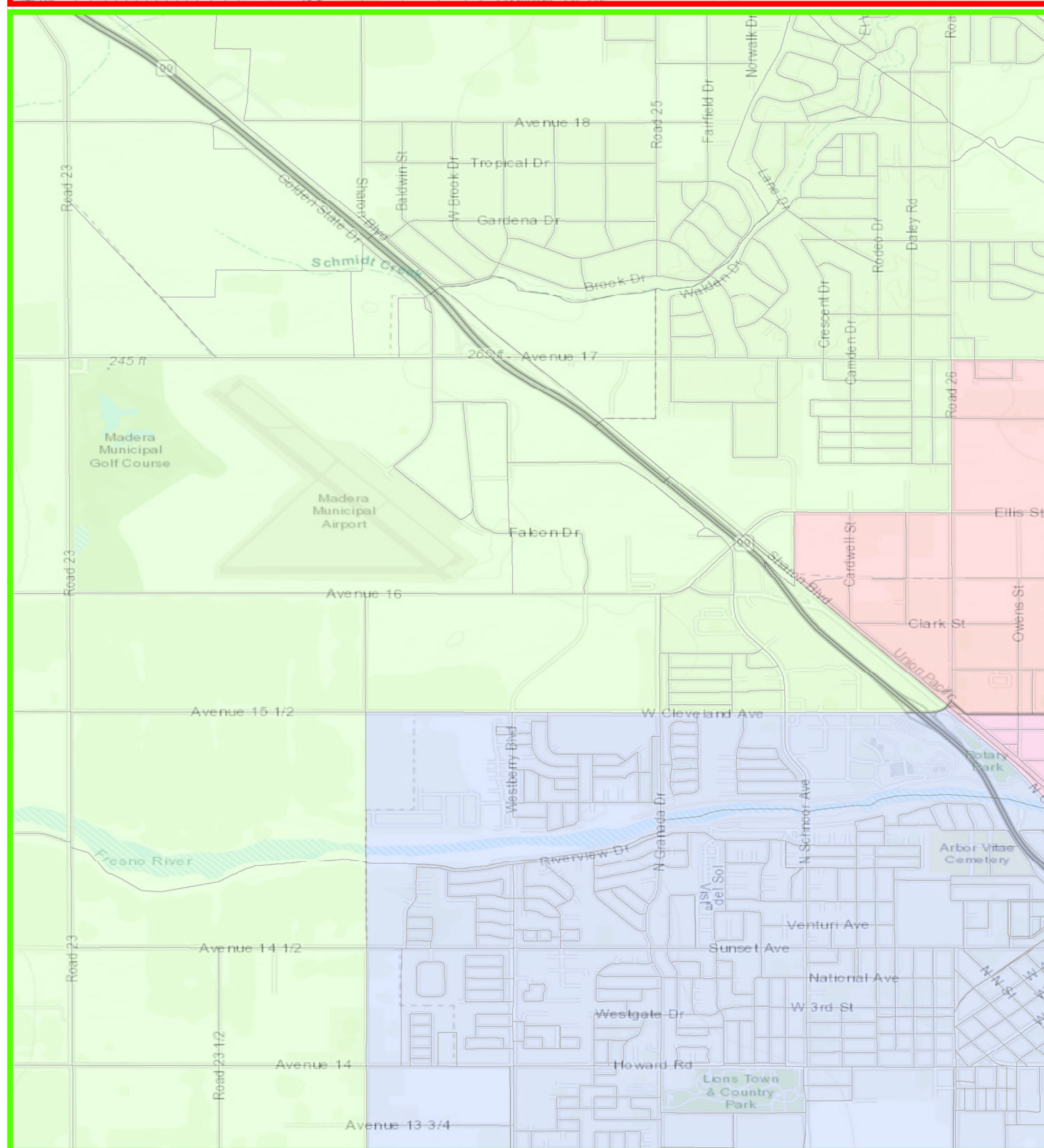
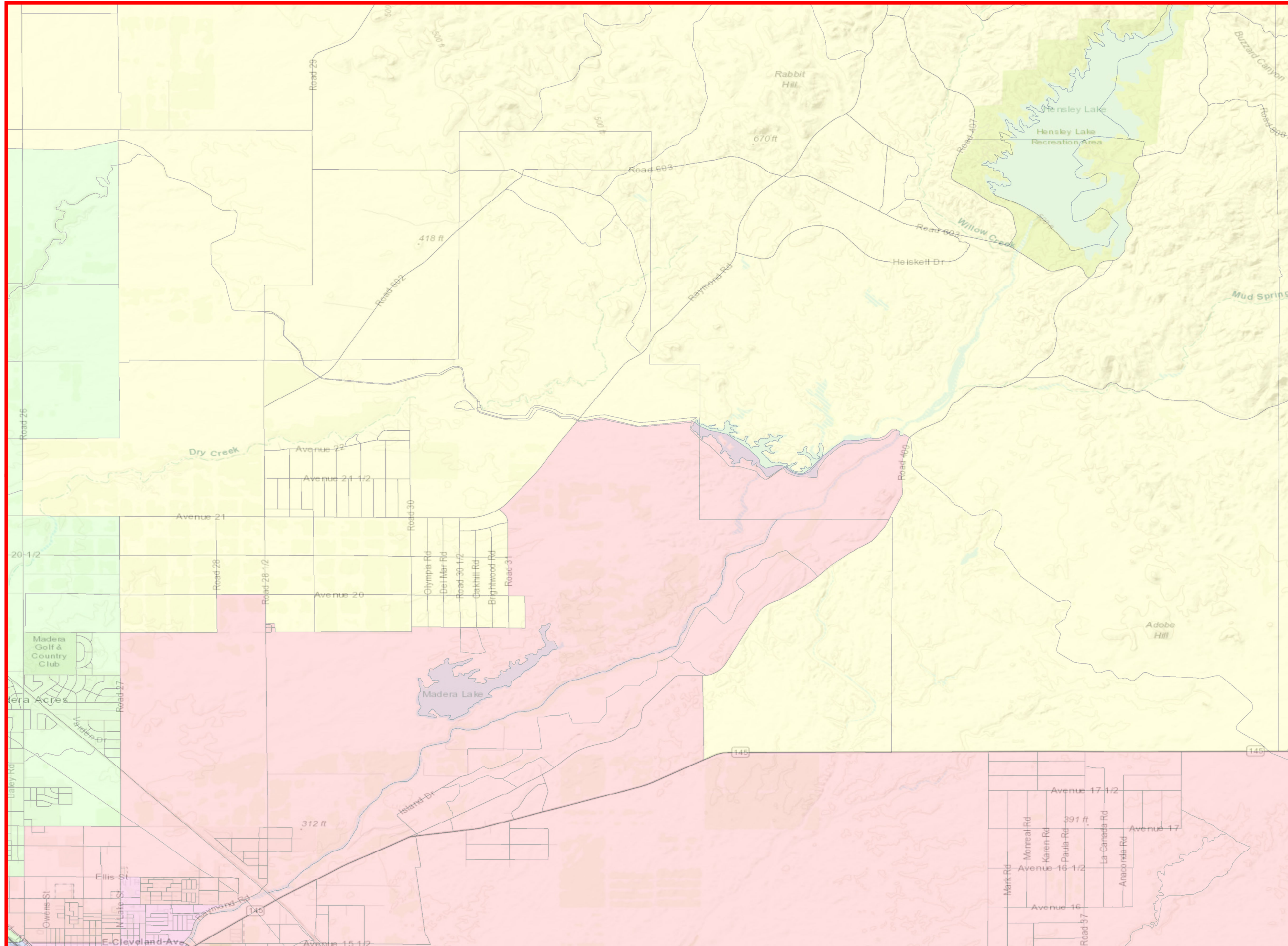


County of Madera

Proposed Supervisorial District Boundary Revision



Map 5

District	Total Population	Ideal Population	Deviation from Ideal	Percent Deviation from Ideal
1	29,003	30,223	-1,220	-4.0%
2	30,771	30,223	548	1.8%
3	30,272	30,223	49	0.2%
4	31,802	30,223	1,579	5.2%
5	29,265	30,223	-958	-3.2%
Total:	151,113	151,115		

Deviation between Largest and Smallest District 9.3%

Source: U.S. Census Bureau 2020 Decennial Census Data

- District 1
- District 2
- District 3
- District 4
- District 5

**Citizen Voting Age Population
Map 5**

District	Total Population	Hispanic or Latino	Not Hispanic or Latino	Not Hispanic or Latino									
				American Indian or Alaska Native Alone	Asian Alone	Black or African American Alone	Native Hawaiian or Other Pacific Islander Alone	White Alone	American Indian or Alaska Native and White	Asian and White	Black or African American and White	American Indian or Alaska Native and Black or African American	Remainder of Two or More Race Responses
1	16,526	7,569 45.8%	8,917 54.0%	299 1.8%	359 2.2%	430 2.6%	4 0.0%	7,579 45.9%	162 1.0%	17 0.1%	36 0.2%	0 0.0%	34 0.2%
2	16,873	7,607 45.1%	9,214 54.6%	89 0.5%	597 3.5%	325 1.9%	34 0.2%	7,772 46.1%	206 1.2%	1 0.0%	120 0.7%	0 0.0%	69 0.4%
3	16,470	9,051 55.0%	7,447 45.2%	60 0.4%	431 2.6%	802 4.9%	1 0.0%	5,841 35.5%	101 0.6%	33 0.2%	64 0.4%	0 0.0%	71 0.4%
4	12,569	9,309 74.1%	3,238 25.8%	55 0.4%	49 0.4%	1,092 8.7%	0 0.0%	1,834 14.6%	20 0.2%	23 0.2%	0 0.0%	25 0.2%	56 0.4%
5	23,650	3,252 13.8%	20,415 86.3%	402 1.7%	349 1.5%	143 0.6%	0 0.0%	19,070 80.6%	220 0.9%	117 0.5%	43 0.2%	0 0.0%	43 0.2%
<i>Total:</i>	86,088	36,788 42.7%	49,231 57.2%	905 1.1%	1,785 2.1%	2,792 3.2%	39 0.0%	42,096 48.9%	709 0.8%	191 0.2%	263 0.3%	25 0.0%	273 0.3%